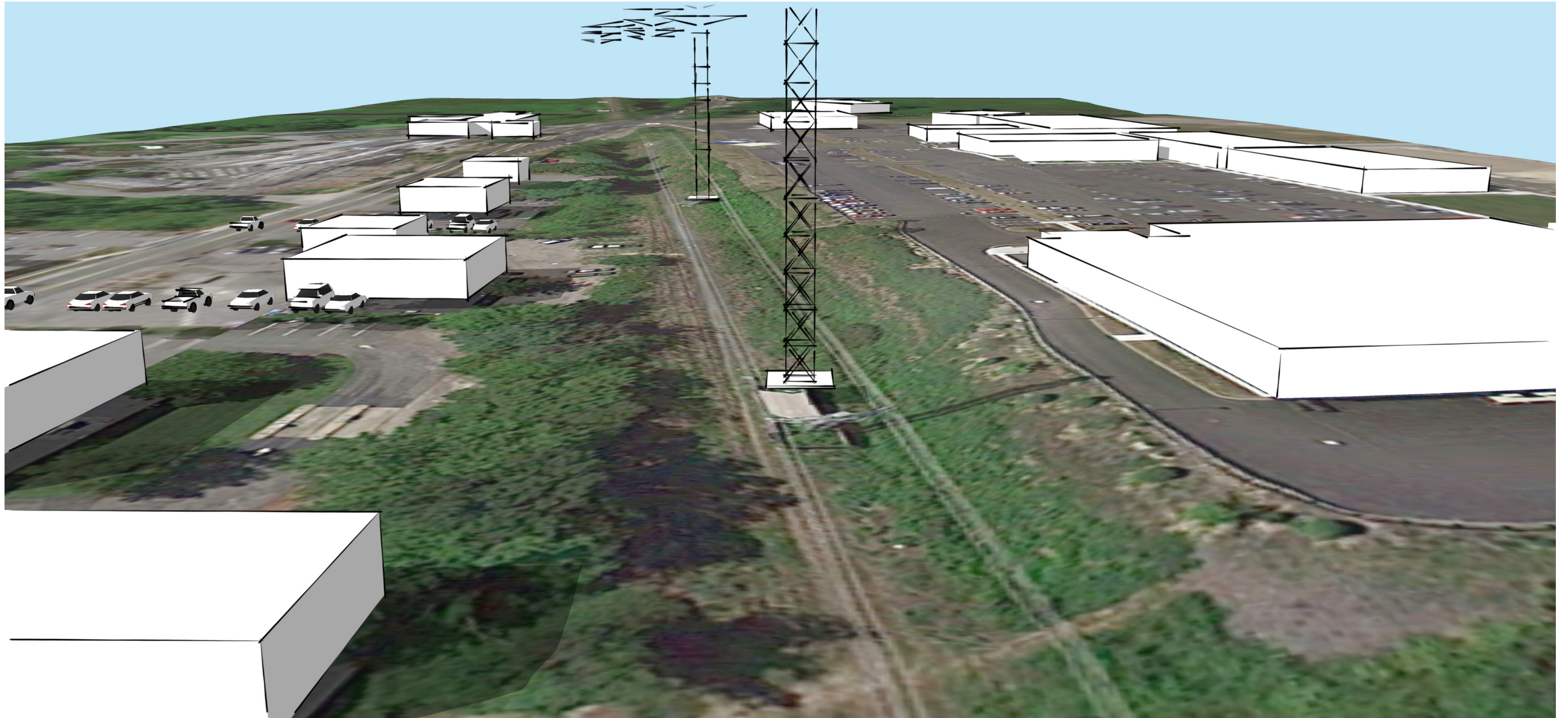


1 - Existing Conditions - Photos



2 - Existing Conditions - Aerial



3 - Proposed Bike Path - Aerial



4 - Existing Conditions - Detail



5 - Proposed Bike Path - Detail

Occasional groupings of native deciduous trees planted on opposite side of tower location(s)

Renewable plantings (Dwarf oak, sumac, viburnum) that withstand occasional maintenance equipment around tower base

Mowable shoulder that can have a meandering edge where grading and plant material allow

Phase One - Compacted Gravel sub base with 1/2" top coat of compacted stone chip and/or stone dust.
Phase Two - Paved surface

