



Protect Mainstone Farm

PROJECT OVERVIEW

Mainstone Farm is the largest remaining piece of undeveloped, unprotected open space in Wayland and one of the few of its size in the region. Well-known and loved by residents for its bucolic, rolling pastures and wooded hillsides, it has long been a priority for protection by the Town of Wayland and SVT.

At Town Meeting in early April 2016, Wayland residents will have the opportunity to secure the permanent protection of Mainstone Farm by approving the appropriation of funds to acquire a Conservation Restriction (CR) on 200 acres of the property.

The Hamlen family has owned and lived on the property since 1872 and continues to farm the land and manage the woodland today. The family proposes to sell a perpetual CR to the Town and SVT for \$15 million, which is less than the \$17 million value placed on the CR by an appraisal commissioned by the Town.

SVT has committed to raising \$3.3 million privately toward the purchase and to cover the costs that will be incurred to craft and monitor the CR in perpetuity. Wayland voters will be asked to provide \$12 million toward acquisition from Community Preservation (CPA) funds.

Under the CR, which will be jointly held by the Town and SVT, the current and future owners will be permitted to farm and conduct woodland management activities. Trails, connecting to adjacent conservation land, will be open for passive, public recreation.



Sudbury Valley Trustees

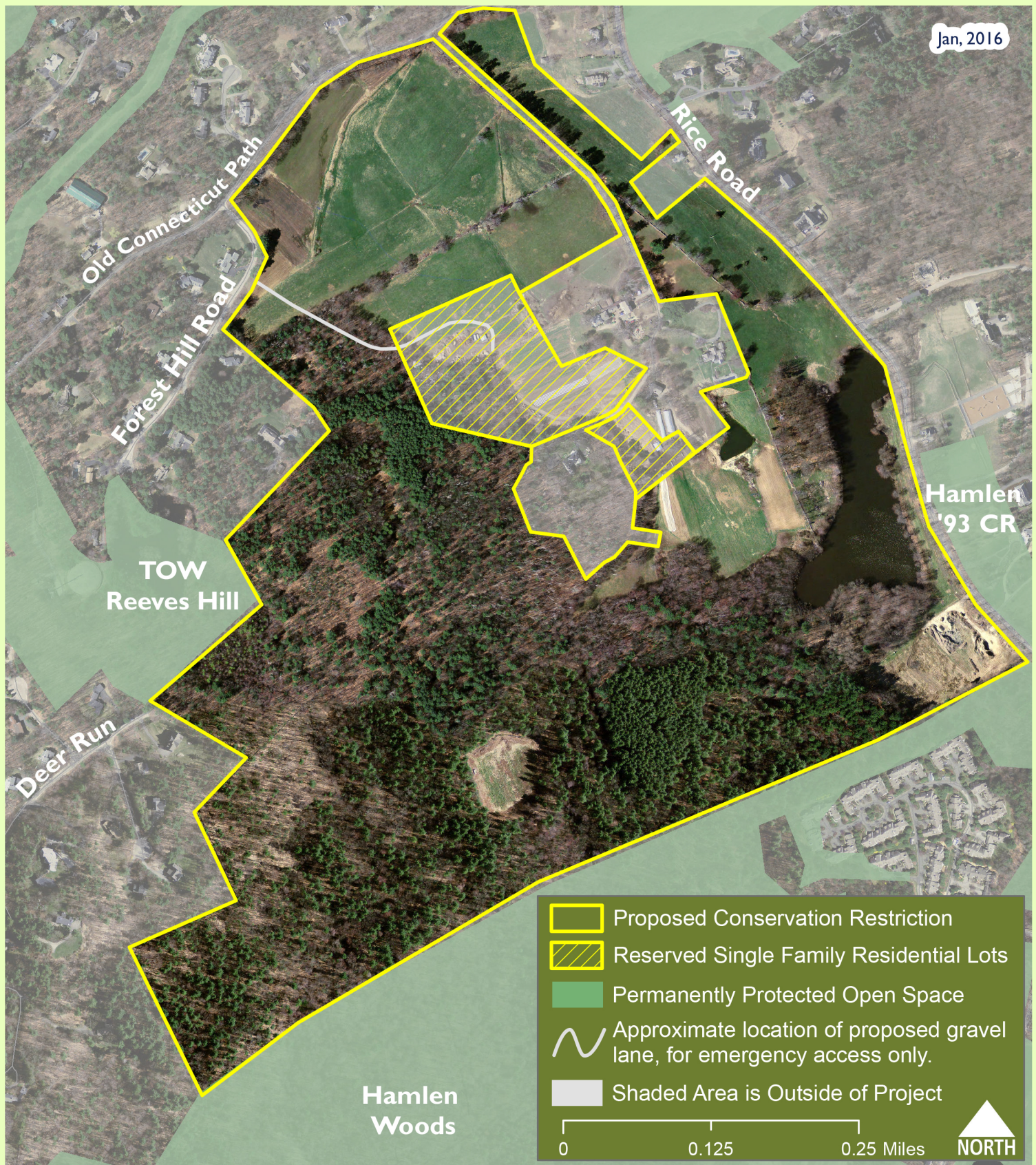
18 Wolbach Road
Sudbury, MA 01776
978-443-5588
www.svtweb.org



41 Cochituate Road
Wayland, MA 01778
508-358-7701
www.wayland.ma.us



Protect Mainstone Farm



Map produced by Sudbury Valley Trustees. Data provided by Office of Geographic and Environmental Information (MassGIS), Commonwealth of Massachusetts Executive Office of Energy and Environmental Affairs. This map should be used for reference only. Boundary lines are approximate.