

Wayland MUOD Peer Review

Town of Wayland, MA

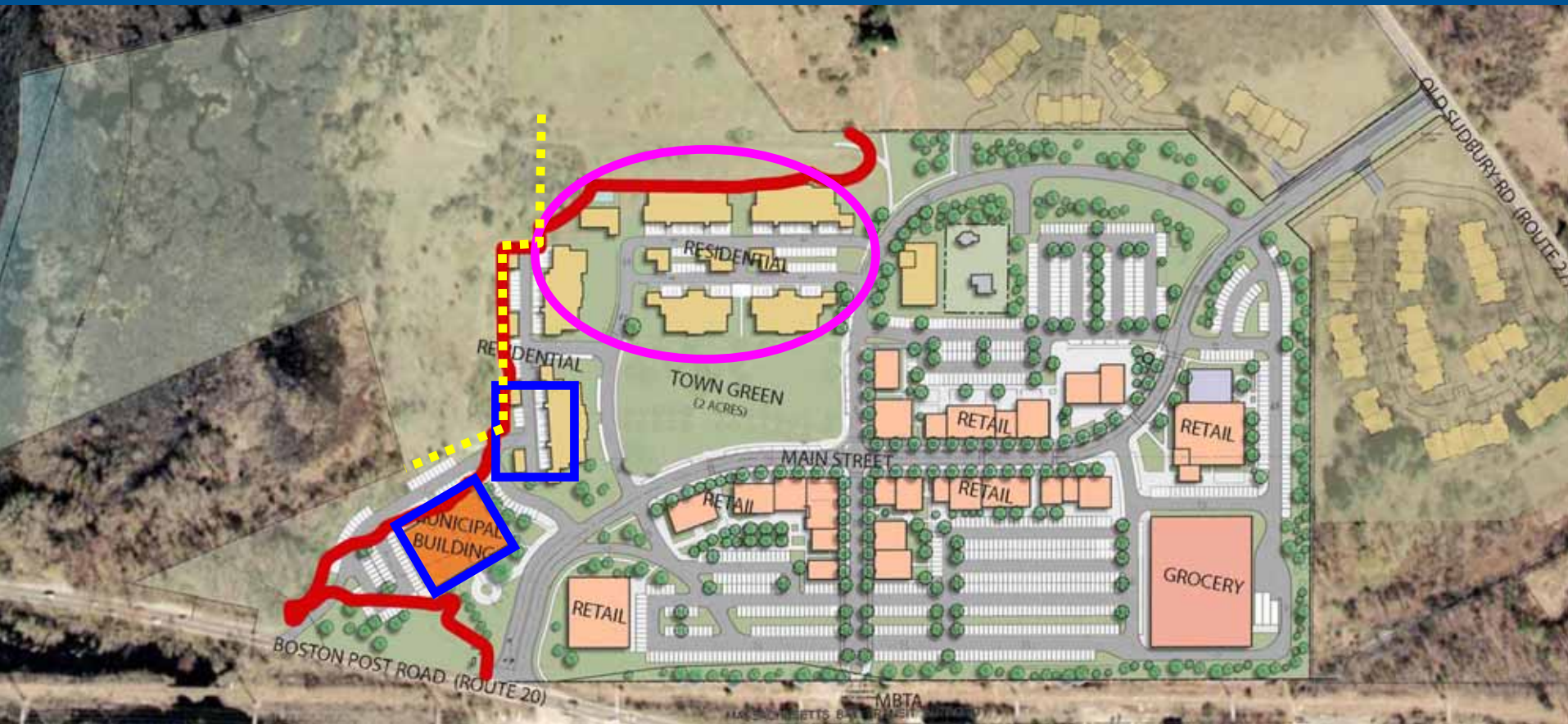
Prepared by:
The Cecil Group

July 11, 2007

Revision of Concept



Revision of Concept



- Additional environmental constraints
- Reconfiguration of residential, municipal

Revision of Submittal



- Reconfiguration of municipal building, town green
- Loss of residential building increases height along green

Residential Massing

The repeated façade of the residential buildings on the park could be more varied. Their prominent position warrants more attention to detail and how they relate to not only each other, but the Town Green as well.



Residential Massing

The original two- and three-story design of the residential buildings has now been raised to three stories for all buildings, but is still at an appropriate scale for the Town Green.



Two Stories



Three Stories



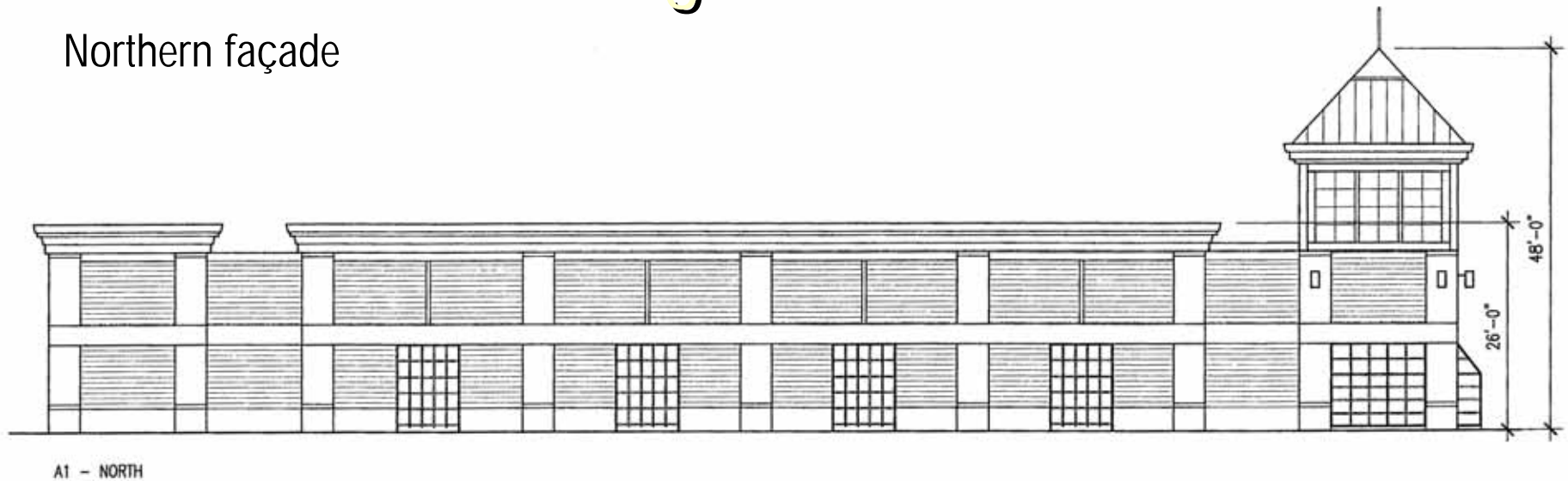
Commercial Massing



The northern façade of building A-1 should also have more visual interest when viewed from the pedestrian plaza across the street.

Commercial Massing

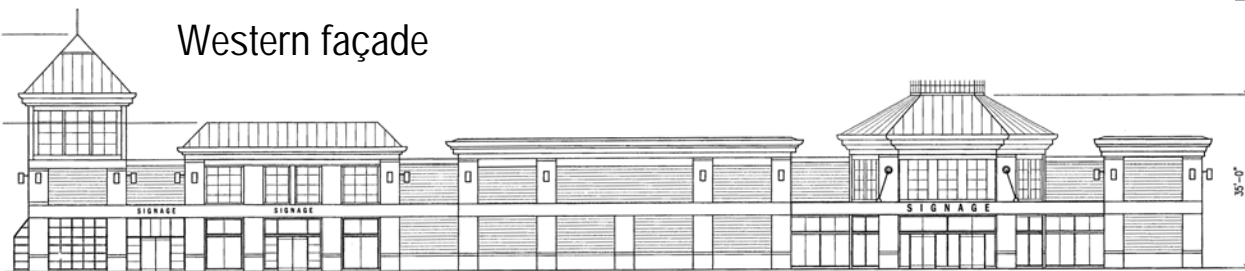
Northern façade



The western façade of building A-1 is well articulated...

...however more articulation is needed along the northern façade (architectural or landscape).

Western façade



Wayland MUOD Peer Review

