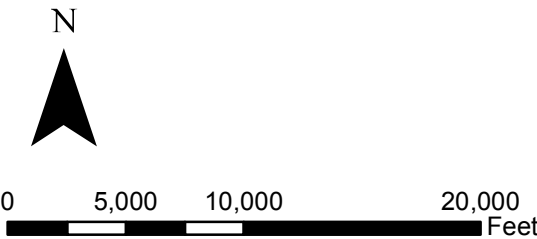





Source: BING 2009

Vanasse Hangen Brustlin, Inc.

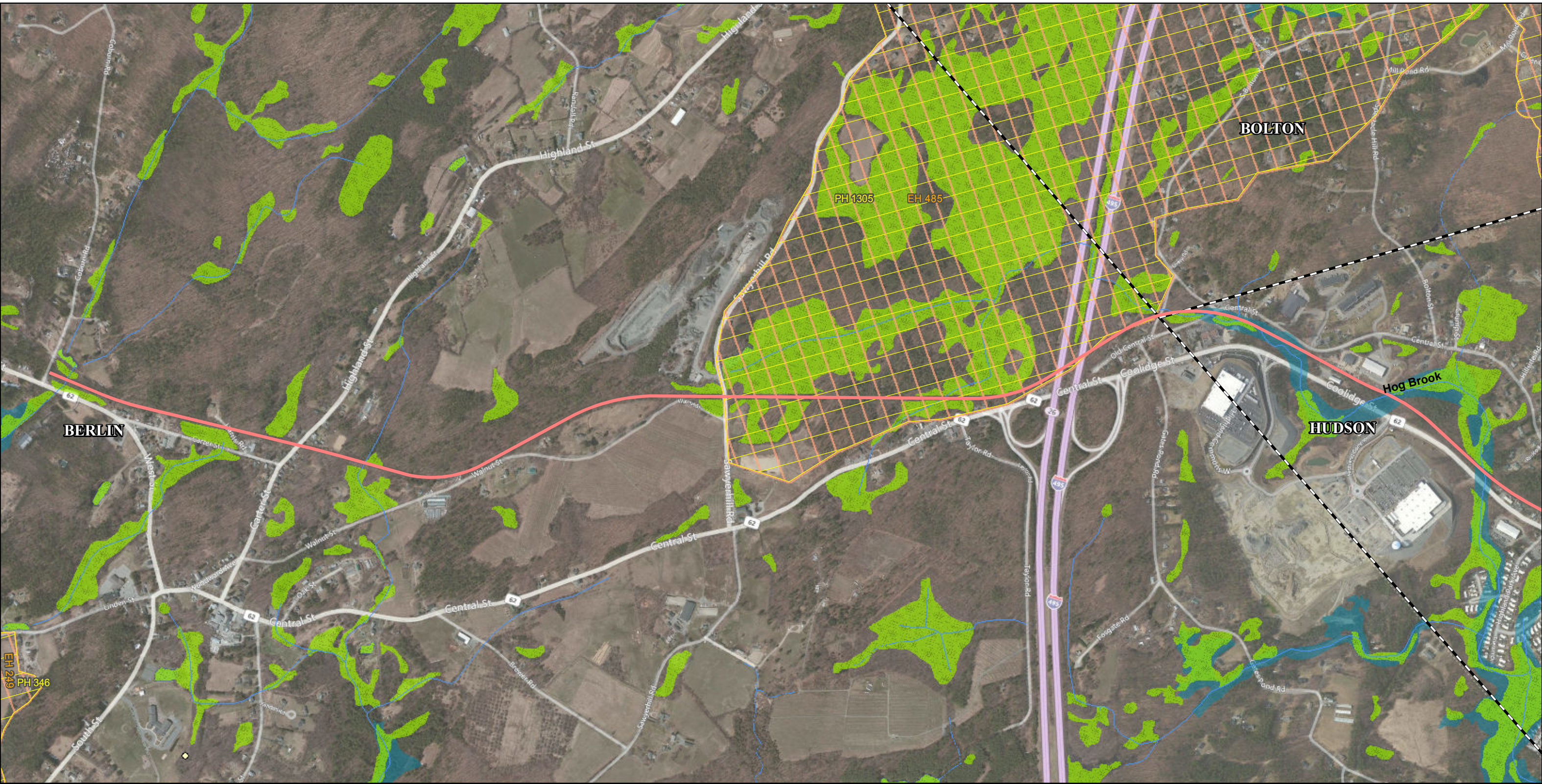


-  Mass Central Rail Trail Alignment
-  Town Boundaries
-  Figure Index

Mass Central Rail Trail
Berlin to Waltham, Massachusetts

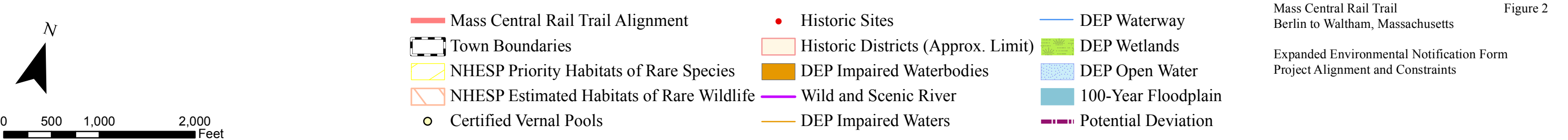
Figure 1

Expanded Environmental Notification Form
Key Sheet



Source: BING 2009

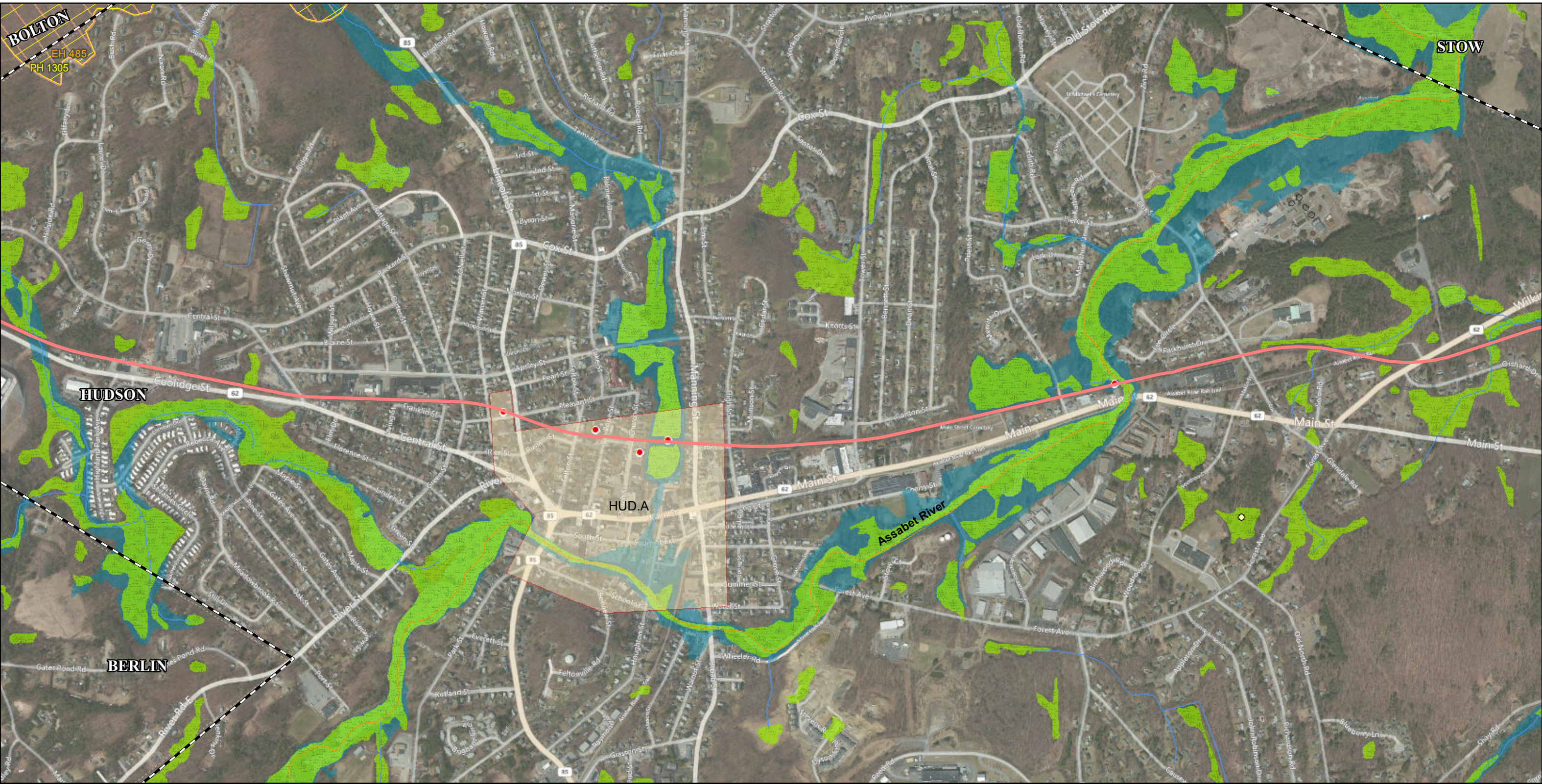
Vanasse Hangen Brustlin, Inc.



Mass Central Rail Trail
Berlin to Waltham, Massachusetts

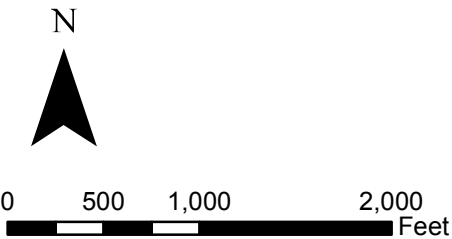
Expanded Environmental Notification Form
Project Alignment and Constraints

Figure 2



Source: BING 2009

Vanasse Hangen Brustlin, Inc.

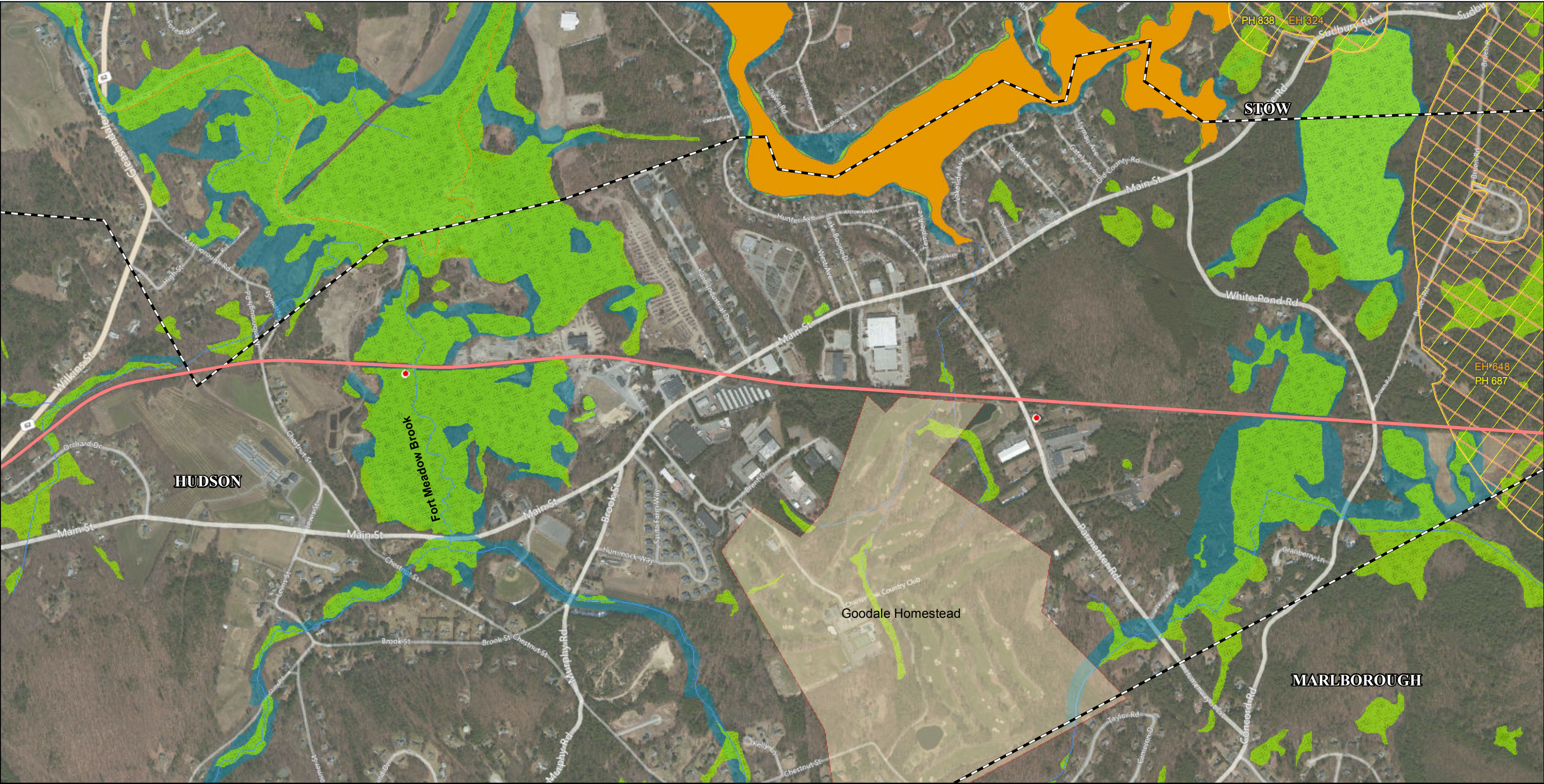


- | | | |
|---|------------------------------------|---------------------|
| Mass Central Rail Trail Alignment | Historic Sites | DEP Waterway |
| Town Boundaries | Historic Districts (Approx. Limit) | DEP Wetlands |
| NHESP Priority Habitats of Rare Species | DEP Impaired Waterbodies | DEP Open Water |
| NHESP Estimated Habitats of Rare Wildlife | Wild and Scenic River | 100-Year Floodplain |
| Certified Vernal Pools | DEP Impaired Waters | Potential Deviation |

Mass Central Rail Trail
Berlin to Waltham, Massachusetts

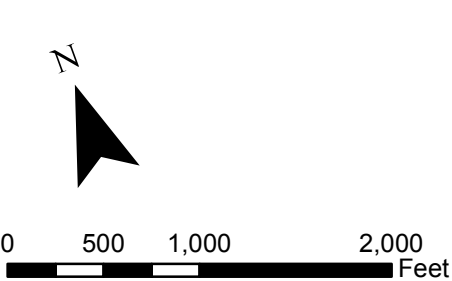
Expanded Environmental Notification Form
Project Alignment and Constraints

Figure 3



Source: BING 2009

Vanasse Hangen Brustlin, Inc.

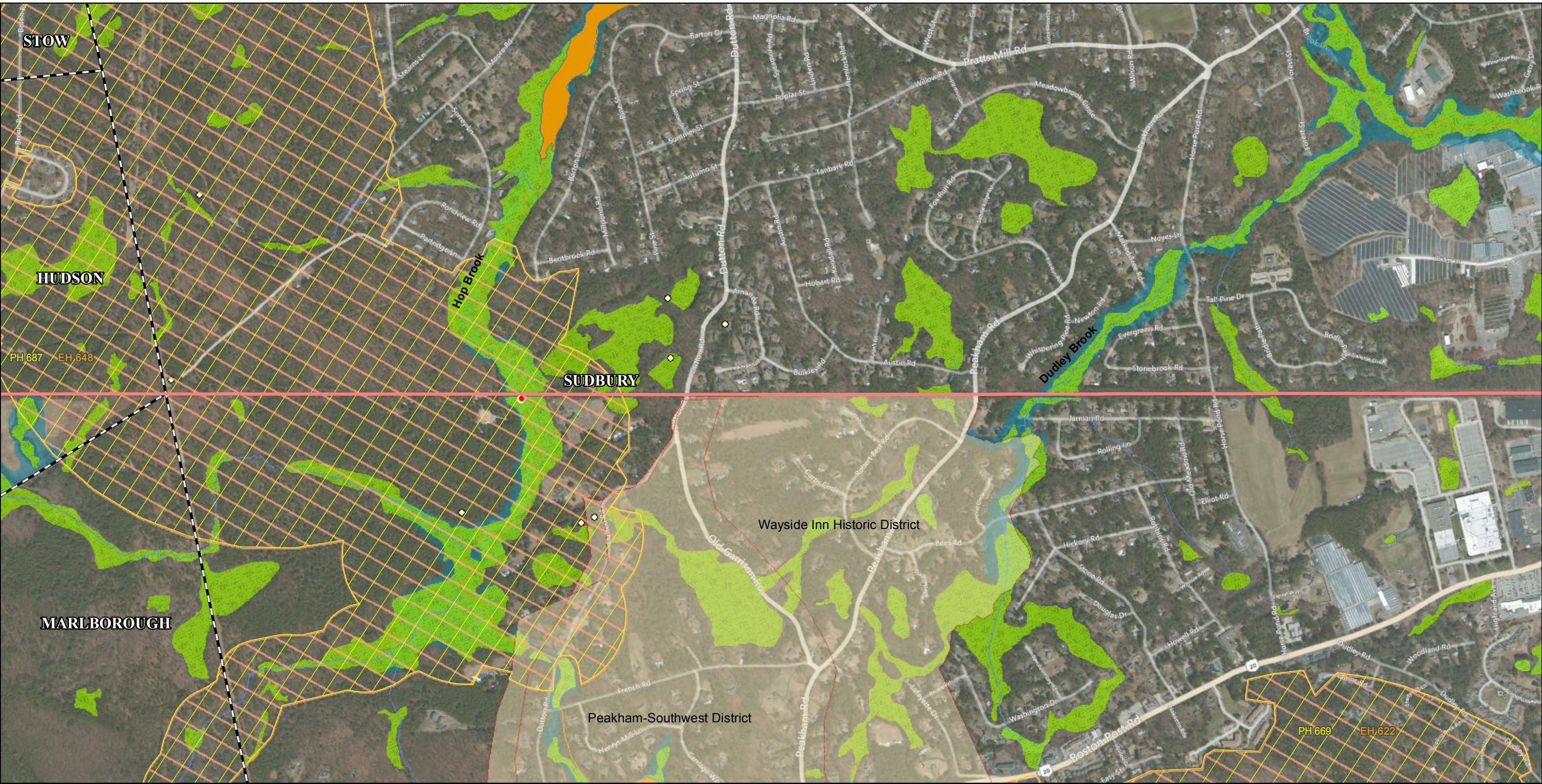


- | | | |
|---|------------------------------------|---------------------|
| Mass Central Rail Trail Alignment | Historic Sites | DEP Waterway |
| Town Boundaries | Historic Districts (Approx. Limit) | DEP Wetlands |
| NHESP Priority Habitats of Rare Species | DEP Impaired Waterbodies | DEP Open Water |
| NHESP Estimated Habitats of Rare Wildlife | Wild and Scenic River | 100-Year Floodplain |
| Certified Vernal Pools | DEP Impaired Waters | Potential Deviation |

Mass Central Rail Trail
Berlin to Waltham, Massachusetts

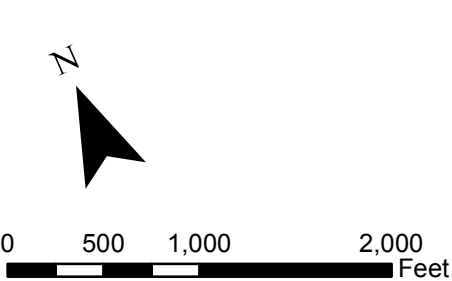
Figure 4

Expanded Environmental Notification Form
Project Alignment and Constraints



Source: BING 2009

Vanasse Hangen Brustlin, Inc.

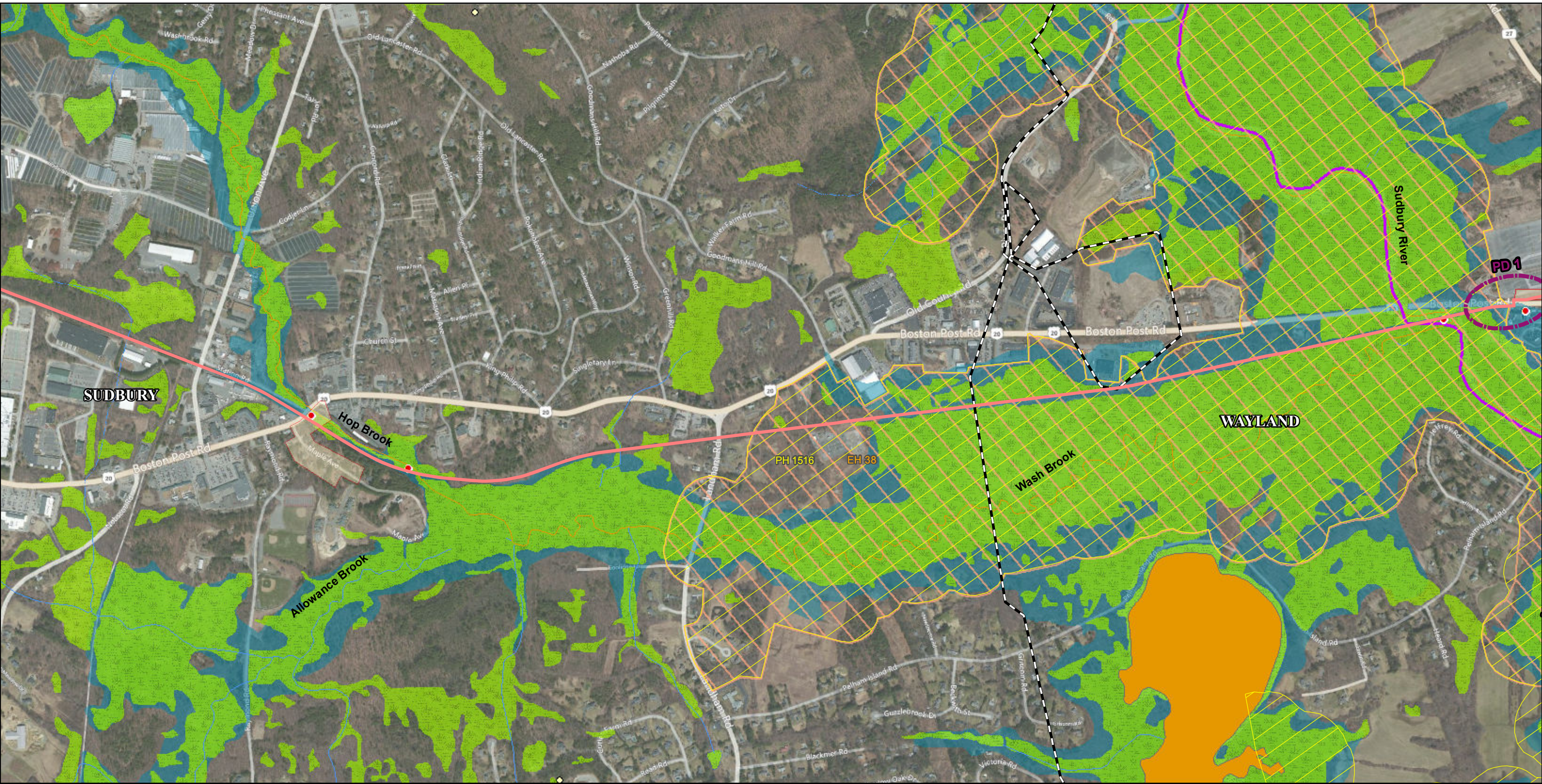


- | | | |
|--|------------------------------------|---------------------|
| Mass Central Rail Trail Alignment | Historic Sites | DEP Waterway |
| Town Boundaries | Historic Districts (Approx. Limit) | DEP Wetlands |
| NHEP Priority Habitats of Rare Species | DEP Impaired Waterbodies | DEP Open Water |
| NHEP Estimated Habitats of Rare Wildlife | Wild and Scenic River | 100-Year Floodplain |
| Certified Vernal Pools | DEP Impaired Waters | Potential Deviation |

Mass Central Rail Trail
Berlin to Waltham, Massachusetts

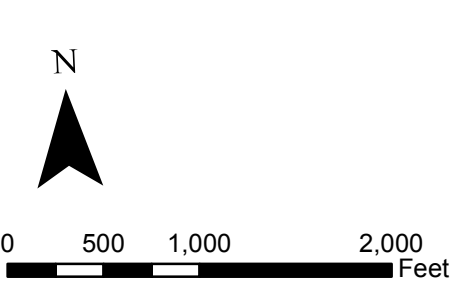
Figure 5

Expanded Environmental Notification Form
Project Alignment and Constraints



Source: BING 2009

Vanasse Hangen Brustlin, Inc.

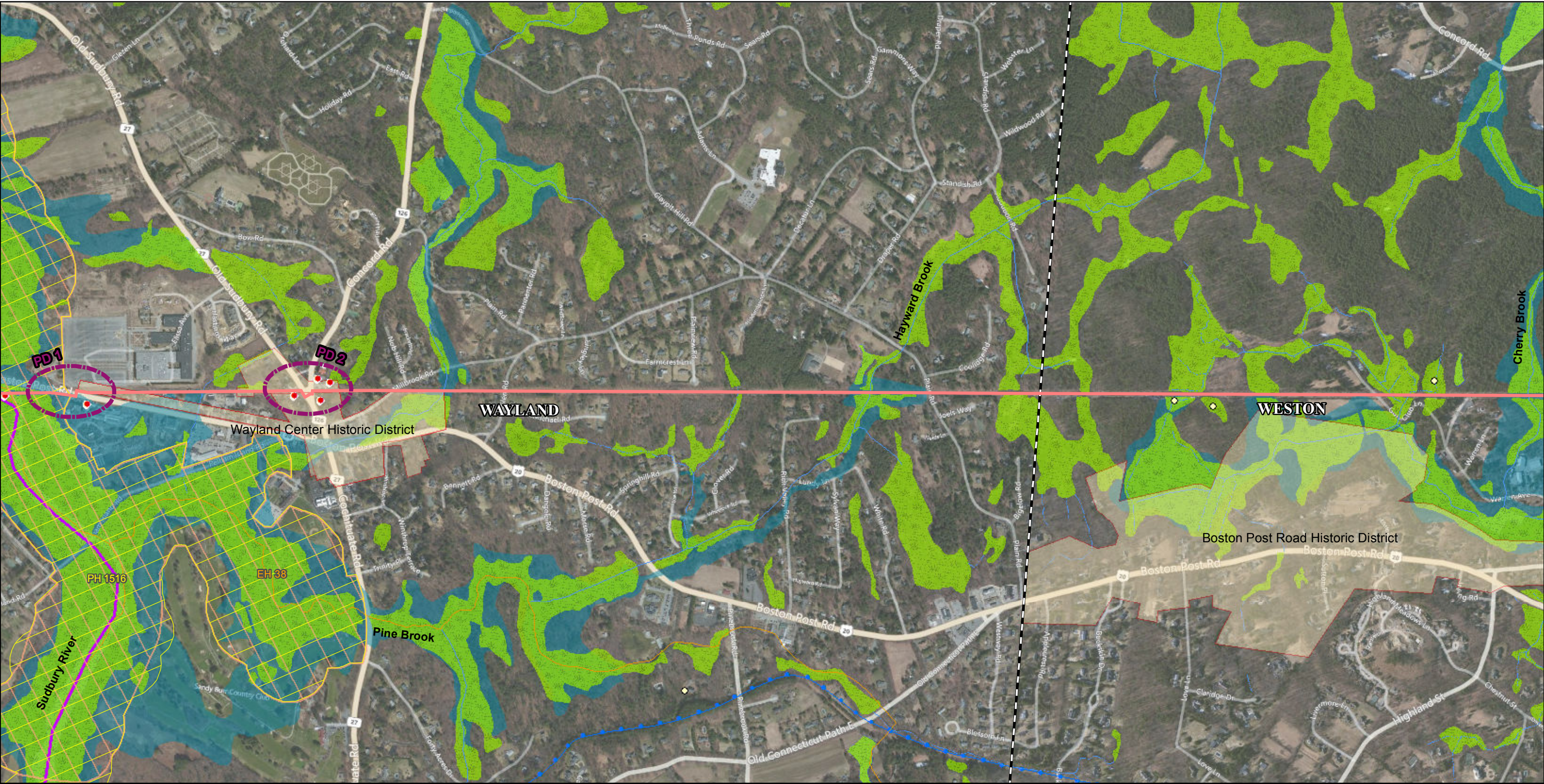


- | | | |
|--|------------------------------------|---------------------|
| Mass Central Rail Trail Alignment | Historic Sites | DEP Waterway |
| Town Boundaries | Historic Districts (Approx. Limit) | DEP Wetlands |
| NHEP Priority Habitats of Rare Species | DEP Impaired Waterbodies | DEP Open Water |
| NHEP Estimated Habitats of Rare Wildlife | Wild and Scenic River | 100-Year Floodplain |
| Certified Vernal Pools | DEP Impaired Waters | Potential Deviation |

Mass Central Rail Trail
Berlin to Waltham, Massachusetts

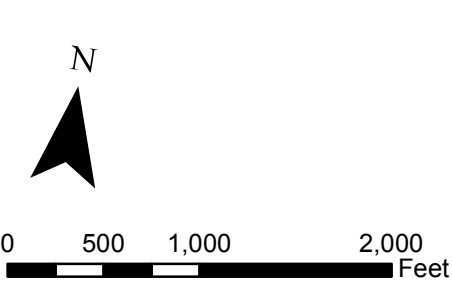
Expanded Environmental Notification Form
Project Alignment and Constraints

Figure 6



Source: BING 2009

Vanasse Hangen Brustlin, Inc.

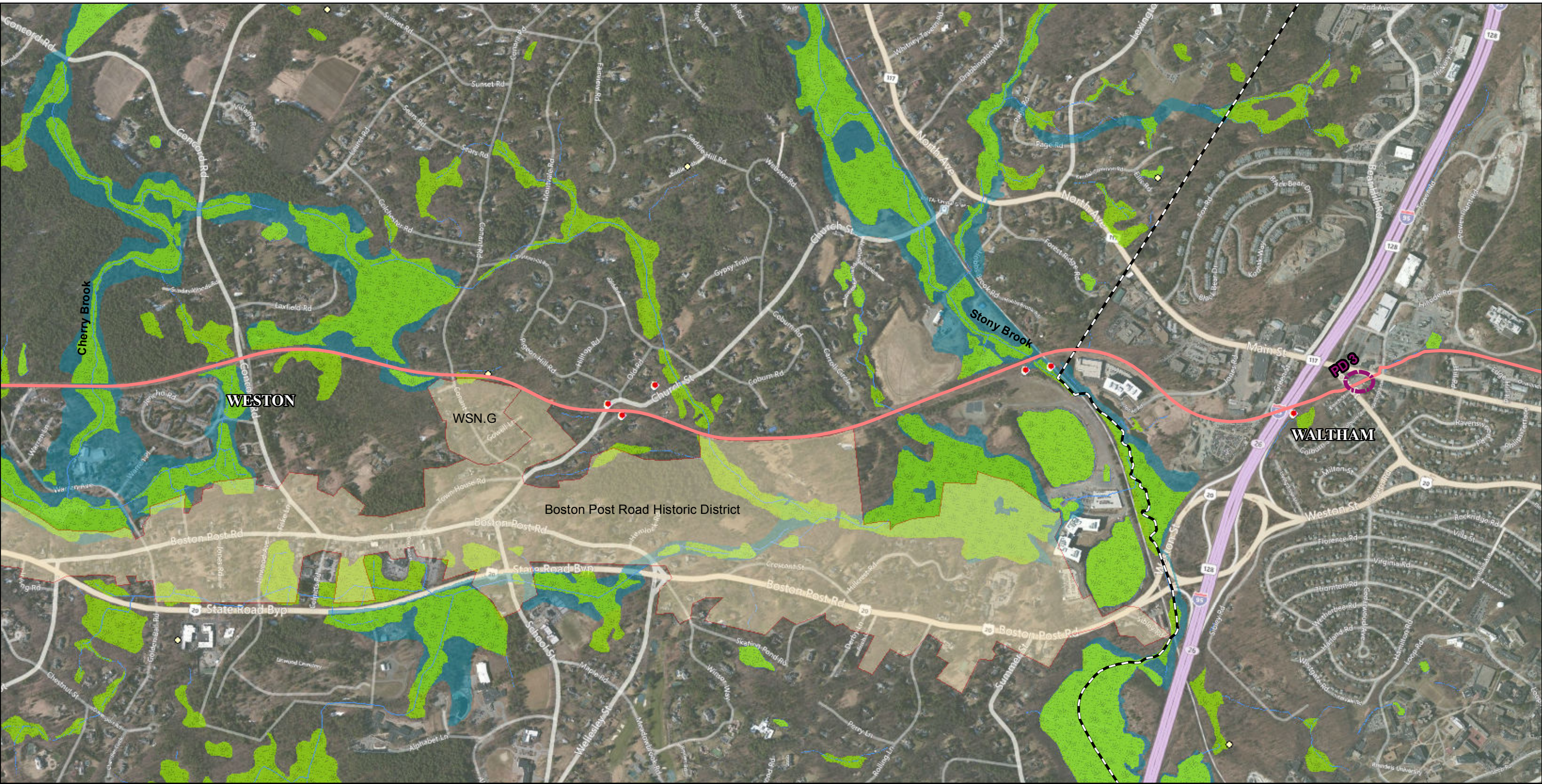


- | | | |
|---|------------------------------------|---------------------|
| Mass Central Rail Trail Alignment | Historic Sites | DEP Waterway |
| Town Boundaries | Historic Districts (Approx. Limit) | DEP Wetlands |
| NHESP Priority Habitats of Rare Species | DEP Impaired Waterbodies | DEP Open Water |
| NHESP Estimated Habitats of Rare Wildlife | Wild and Scenic River | 100-Year Floodplain |
| Certified Vernal Pools | DEP Impaired Waters | Potential Deviation |

Mass Central Rail Trail
Berlin to Waltham, Massachusetts

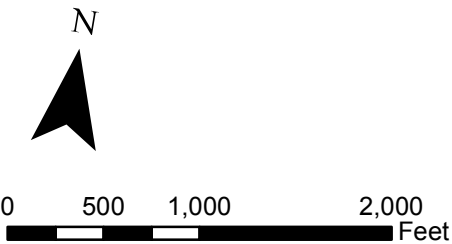
Expanded Environmental Notification Form
Project Alignment and Constraints

Figure 7



Source: BING 2009

Vanasse Hangen Brustlin, Inc.



- | | | |
|---|------------------------------------|---------------------|
| Mass Central Rail Trail Alignment | Historic Sites | DEP Waterway |
| Town Boundaries | Historic Districts (Approx. Limit) | DEP Wetlands |
| NHESP Priority Habitats of Rare Species | DEP Impaired Waterbodies | DEP Open Water |
| NHESP Estimated Habitats of Rare Wildlife | Wild and Scenic River | 100-Year Floodplain |
| Certified Vernal Pools | DEP Impaired Waters | Potential Deviation |

Mass Central Rail Trail
Berlin to Waltham, Massachusetts

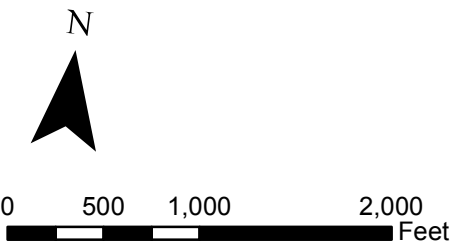
Figure 8

Expanded Environmental Notification Form
Project Alignment and Constraints



Source: BING 2009

Vanasse Hangen Brustlin, Inc.

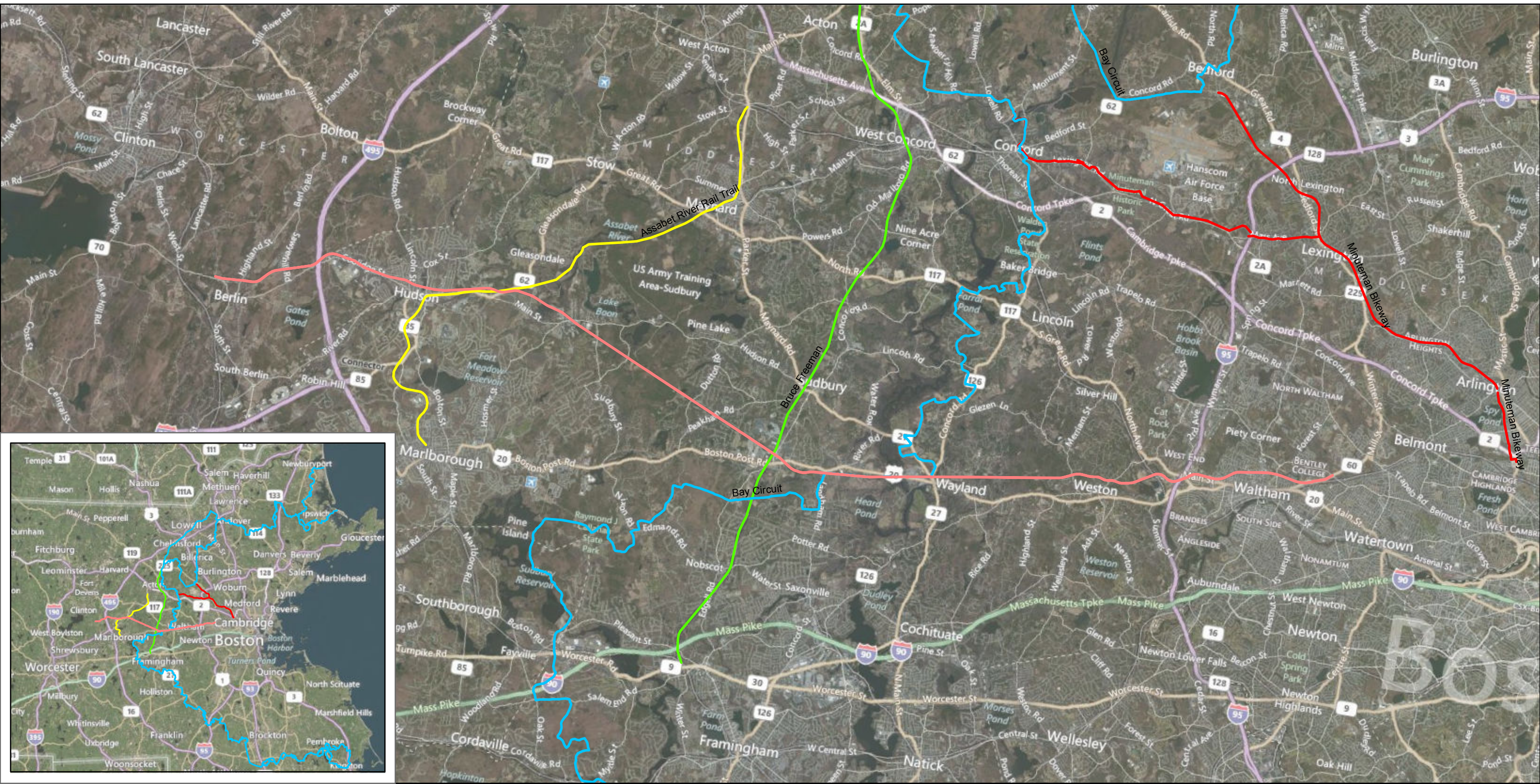


- | | | |
|---|------------------------------------|---------------------|
| Mass Central Rail Trail Alignment | Historic Sites | DEP Waterway |
| Town Boundaries | Historic Districts (Approx. Limit) | DEP Wetlands |
| NHESP Priority Habitats of Rare Species | DEP Impaired Waterbodies | DEP Open Water |
| NHESP Estimated Habitats of Rare Wildlife | Wild and Scenic River | 100-Year Floodplain |
| Certified Vernal Pools | DEP Impaired Waters | Potential Deviation |

Mass Central Rail Trail
Berlin to Waltham, Massachusetts

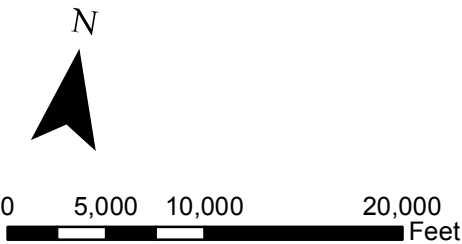
Expanded Environmental Notification Form
Project Alignment and Constraints

Figure 9



Source: BING 2009

Vanasse Hangen Brustlin, Inc.

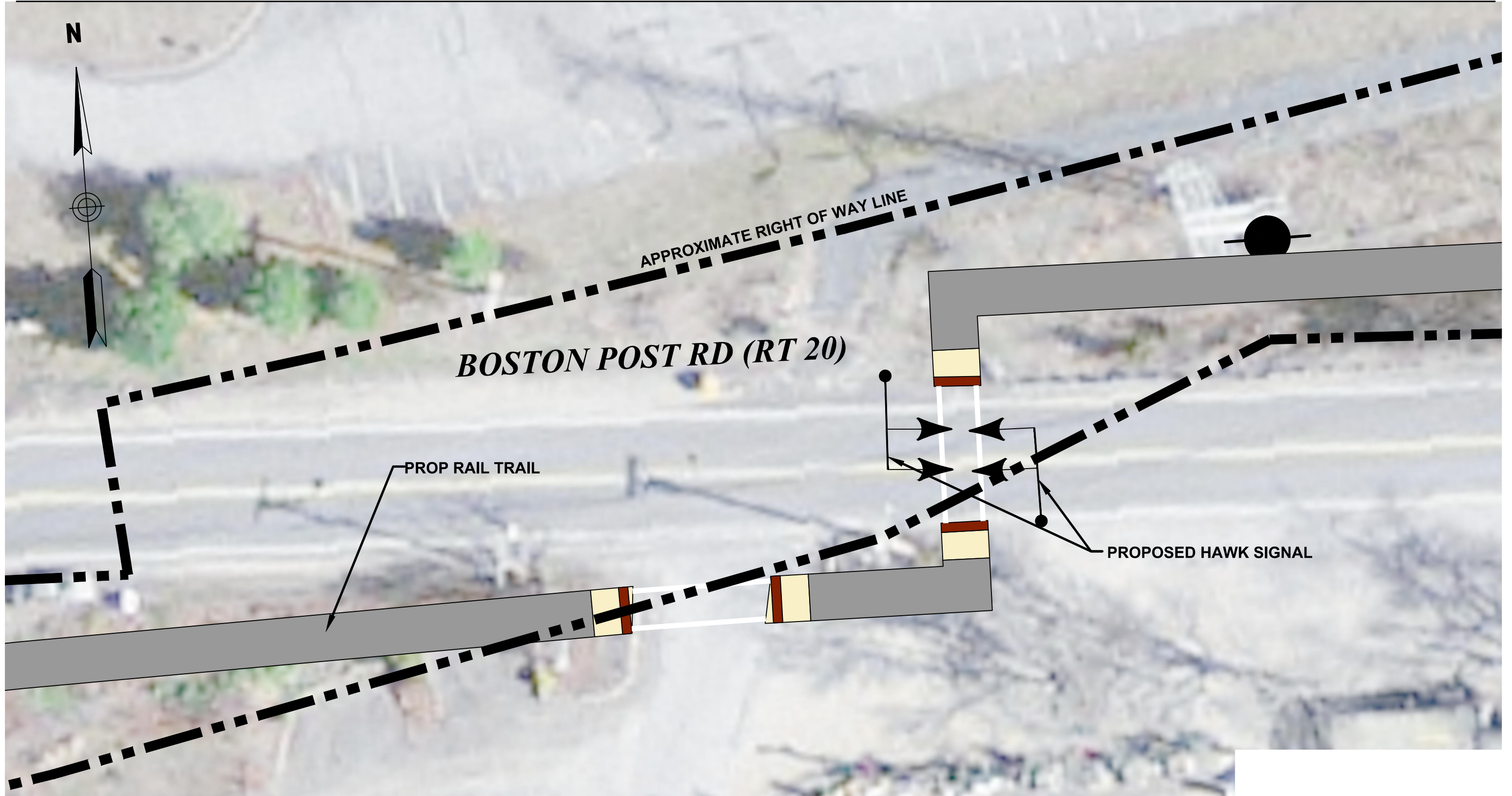


- Proposed Mass Central Rail Trail Alignment
- Bay Circuit Rail Trail
- Assabet River Rail Trail
- Bruce Freeman Rail Trail
- Minuteman Commuter Bikepath

Mass Central Rail Trail
Berlin to Waltham, Massachusetts

Figure 10

Expanded Environmental Notification Form
Trails in Proximity to MCRT



Vanasse Hangen Brustlin, Inc.

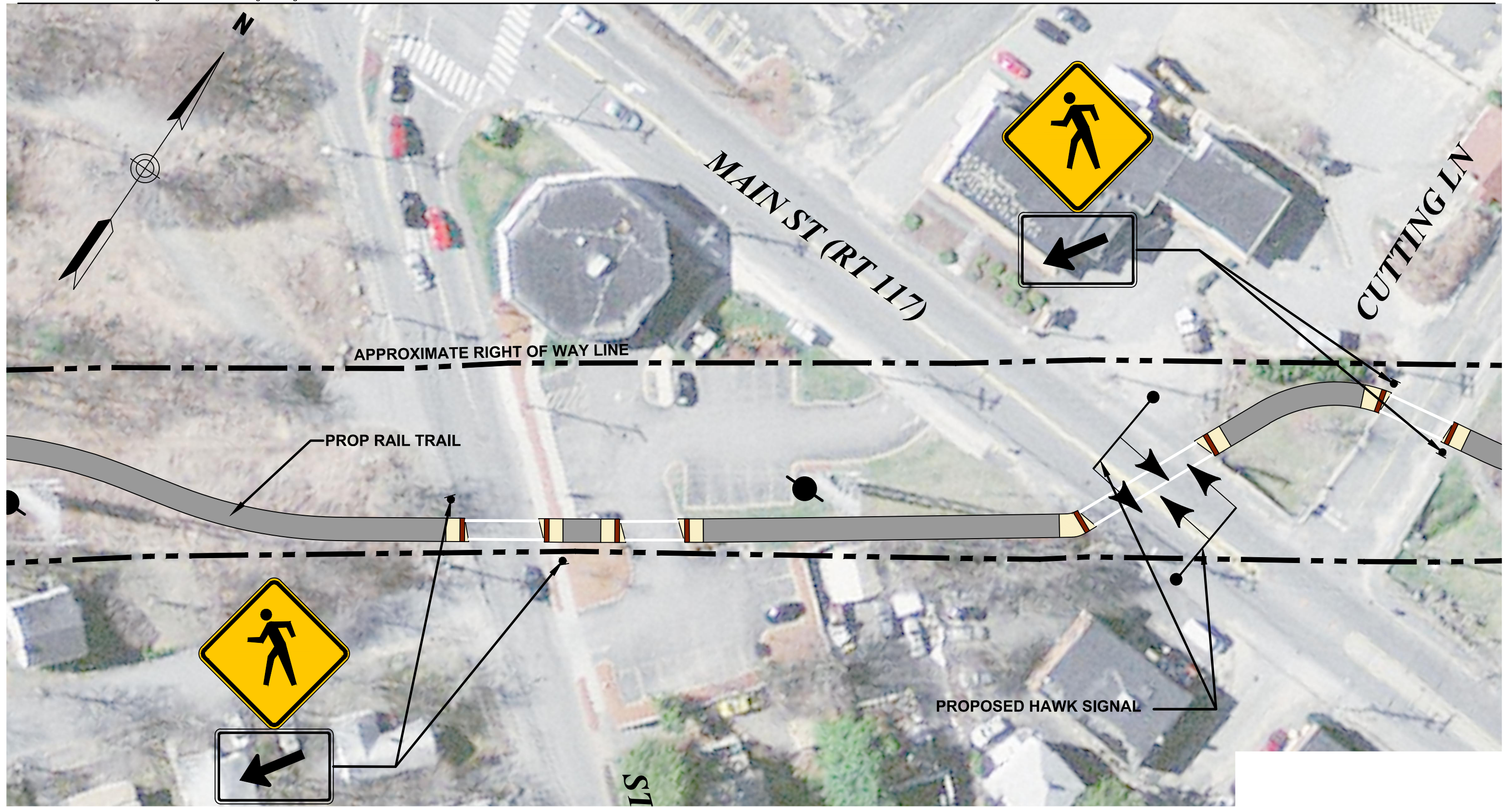
Mass Central Rail Trail
Berlin to Waltham, Massachusetts

Figure 11

Expanded Environmental Notification Form
Potential Deviation (PD) 1 Alignment Alternative

20 0 20 40
SCALE IN FEET

-  Proposed Rail Trail
-  Proposed Wheelchair Ramp
-  Proposed Detectable Warning Panel



Vanasse Hangen Brustlin, Inc.

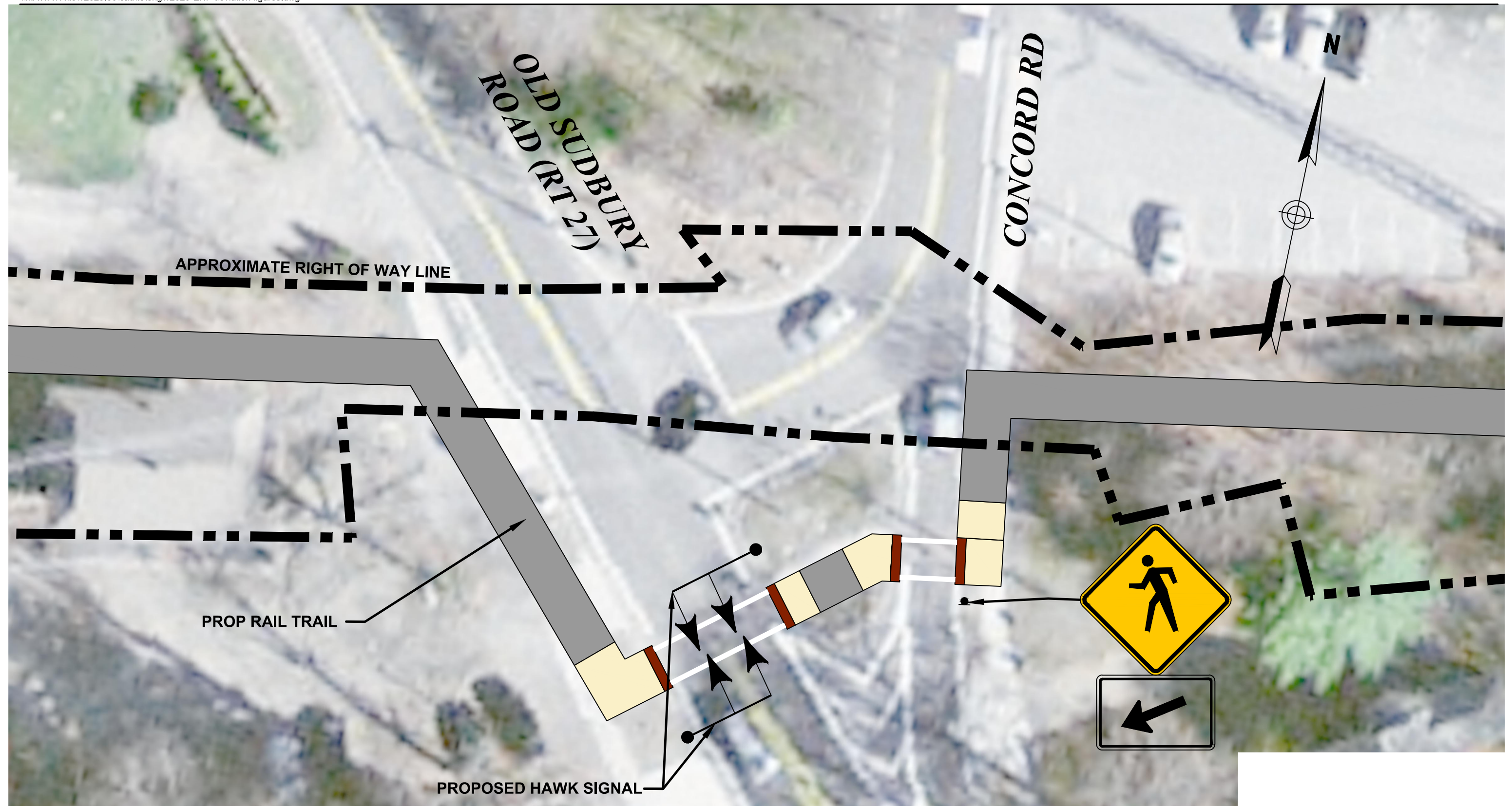
20 0 20 40
SCALE IN FEET

- Proposed Rail Trail
- Proposed Wheelchair Ramp
- Proposed Detectable Warning Panel

Mass Central Rail Trail
Berlin to Waltham, Massachusetts

Figure 13

Expanded Environmental Notification Form
Potential Deviation (PD) 3 Alignment Alternative



Vanasse Hangen Brustlin, Inc.



-  Proposed Rail Trail
-  Proposed Wheelchair Ramp
-  Proposed Detectable Warning Panel

Mass Central Rail Trail
Berlin to Waltham, Massachusetts

Figure 12

Expanded Environmental Notification Form
Potential Deviation (PD) 2 Alignment Alternative