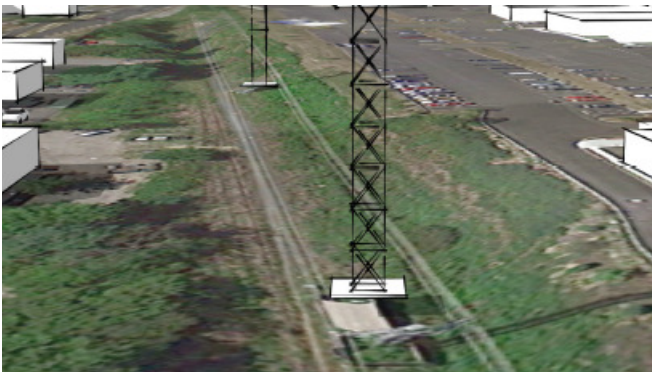
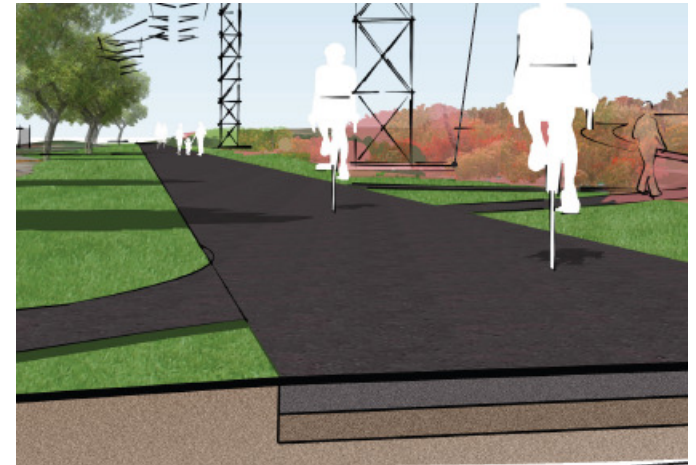


MCRT - Wayland

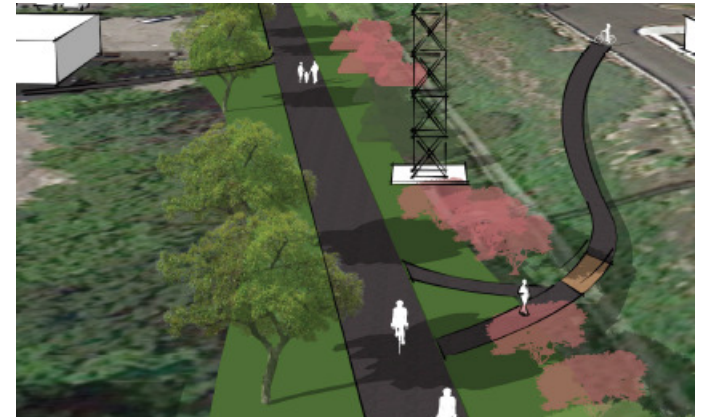


- Highly valued and needed Greenway
- DCR has completed important work
- Overwhelming support
- CPC funding is critical



Larry Kiernan

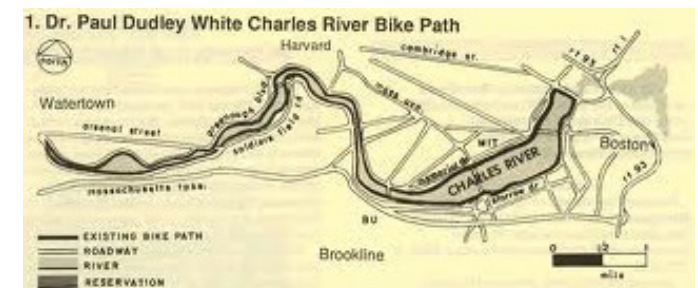
Wayland Rep. to the
MCRT Committee



The Recreational Space that Connects



- Conversion of a 7 acre* industrial space to a greenway will provide safe pedestrian and family biking access to Wayland Town Center from:
 - **100's of homes to Claypit School and to each other** - Coolidge Rd, Rich Valley, Spring Hill, Plainview, Rivers Edge, etc...
 - **Current unconnected open spaces** - Jericho Woods, Rowan Hill, Hidden Springs, Michael Road Parcel, Mill Pond, Cow Commons, Great Meadows Wildlife Refuge
 - **Ultimately 100+ miles of dedicated bike paths and greenways**
 - Bruce Freeman Trail, Assabet River Rail Trail, Charles River Bike Path etc..



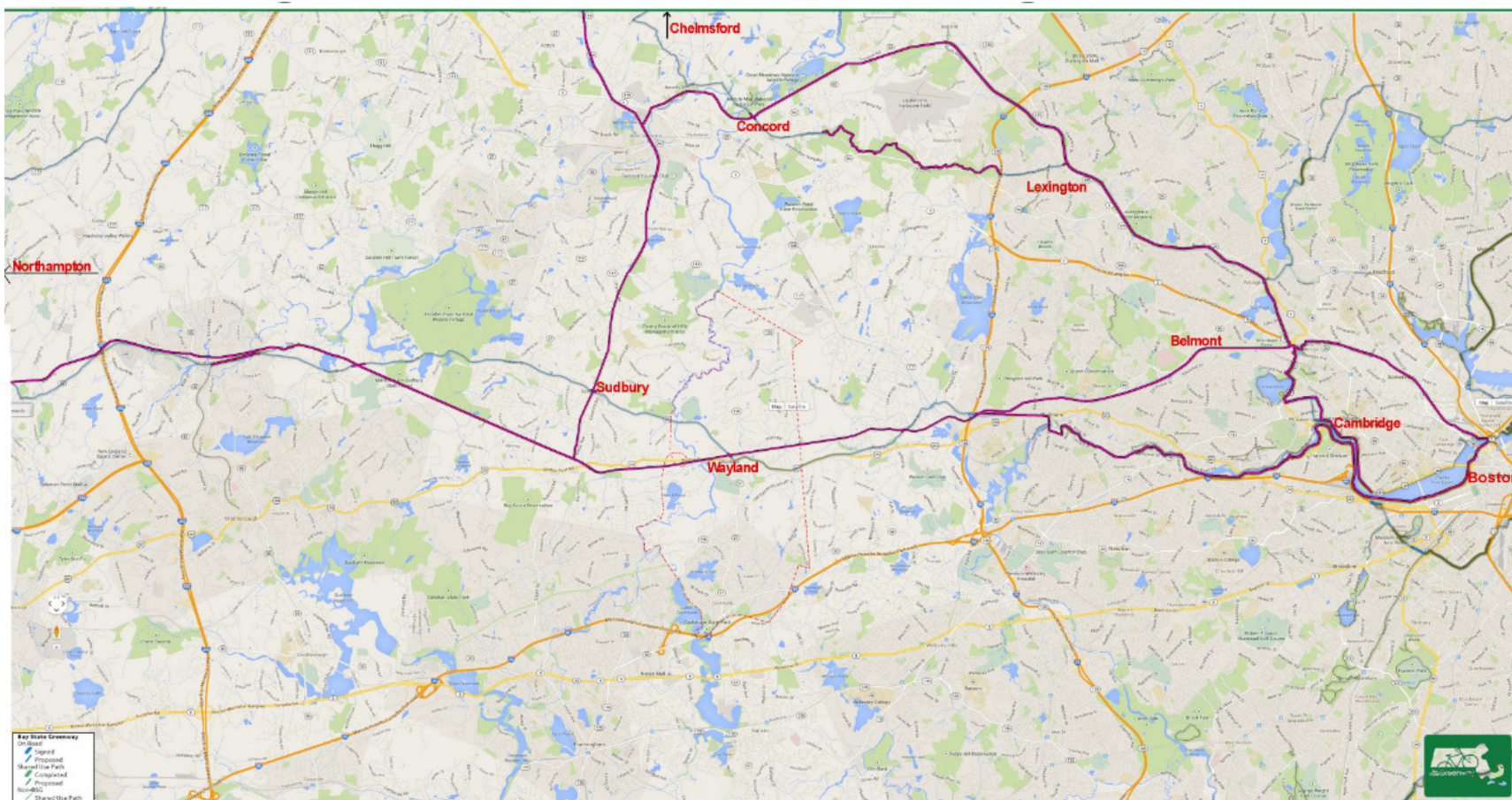
- * 19 foot wide by 3 miles long = 7.2 acres



MCRT Wayside - Wayland



Bay State Greenway Vision



DCR 19 Foot Lease within the rail corridor



DCR Partnership

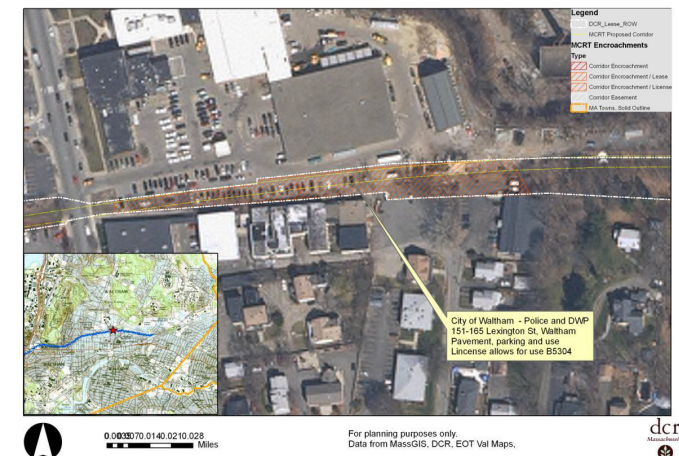


DCR TO CONTINUE DEVELOPING 104-MILE BIKEWAY
WITH 99-YEAR-LEASE FROM THE MBTA

	DCR	Wayland
1 Preliminary Feasibility study	x	
2 Acquire Land/ right of Way	x	
3 Identify Infrastructure	x	
4 Identify Encroachments	x	
5 Indentify Wetlands	x	
6 Base and Arial Map	x	
7 Phase 1 Environmental Study	x	
8 Delineate and Map Corridor	x	
9 Mass Env. Protection Agency Cert.	x	
10 Encroachment Negotiations	x	
11 Feasability study	x	x
12 Construction and Final design	x	x
13 Construction License	x	x
14 Town Permitting		x
15 Recreational Amenities		x
16 Maintenance		x



MCRT
DCR - MBTA Lease Area - Corridor Encroachments



Overwhelming Support



- State
 - Bay State Greenway Vision
 - DCR lease
 - DCR work completed
- Town of Wayland
 - Wayland Master Plan
 - Planning Commission/Department leadership
 - Recreation Commission
 - Partnership with DPW, HDC, HC, ConCom



People of Wayland

- Two town votes of support
- 300+ Wayland Friends
- Business support - \$250k donation
- Donations time and money
- 290 Petition signatures -100+ Comments



Phased Development



Phase Two – Greenway. Tracks and ties removed covered with hard packed stone dust.

MCRT – Wachusett Greenways



Danvers



Phased Development



Phase Three – Mass D.O.T. specification.

Cape Cod Rail Trail



MCRT - Norwottuck Rail Trail



Sudbury votes for
Greenway 2.0 - 9/4/2014



Wayland Options

Option	Est. Cost Wayland	Est. Cost State/ Private.	Length in miles	Users in 5 years	Comments
Goat Path	\$0	\$250 ,000	0.5	Few	Hard pack or paved surface in town center. Status quo - informal trail along tracks - current hazards and obstacles remain. Narrow, prickles, ticks and dangerous road crossings. No Cost. Phase one
Greenway 1.0	\$0-50,000	\$350,000	1.5	Some	Hard pack. DCR and town permit requirements make this option unlikely. Final product and construction process maybe substandard. Fund via grants. Would remove many hazards. Phase Two
Greenway 2.0	\$250,000 - \$375,00	\$250,000	3	Most	Hard pack. DCR supported. Could be completed by fall 2015. Does not serve all users i.e. rollerbladers. Connects to Sudbury and Weston. Phase Two
Rail Trail MASS D.O.T	\$?	\$3,600,000	3	Few	Typically Paved. DCR Supported. Unfunded. Serves all users. Not clear when this might happen. 1997 all over again - Wayland destiny is determined by other towns, the state and federal funds. Phase Three

Preliminary Cost Estimate



Wayland CPC - MA Central Rail Trail - Wayside Branch				Engineer's Conceptual Cost Estimate	
Item	Description	Qty	Units	Unit Price	Total
1	Project Management	1	LS	na	\$10,000
2	Wetlands Delineation (WS) & Mapping	1	LS	na	\$12,800
3	Notice of Intent (NOI) & SWPPP Preparation / Filing	1	LS	na	\$19,500
4	ConComm Public Hearings	3	Each	\$2,200	\$6,600
5	Implement Erosion Controls	1	LS	na	\$26,000
6	Engineering Design / Drainage Drawings - Crossing Details - 80' Scale	6	sheets	\$4,000	\$24,000
7	ADA Layout, Slope & Misc. Details (field verify by Surveyor)	1	sheets	\$10,000	\$10,000
8	Grade Crossings, including MUTCD Signage - three locations	3	Each	\$2,500	\$7,500
9	RRFB Signs at Route 20 and Route 27/126	2	Each	\$14,500	\$29,000
10	Rail & Tie Removal by IHPS	13,200	LF	\$0/LF	\$0
11	Embankment Grading & Capping of Railbed Soils	8	Days	\$3,200	\$25,600
12	Furnish & Install Capping Material Near Easterly End of Trail	1	LS	na	\$28,000
13	Stone Dust & Granite Stabilizer at up to 6 ADA Access Locations (in place)	13,200	LF	\$4/LF	\$52,800
14	Survey Layout & Verification	8	Days	\$2,400	\$19,200
15	Contingency	1	Allowance	na	\$28,000
Total Estimate of Probable Construction Cost					\$325,000