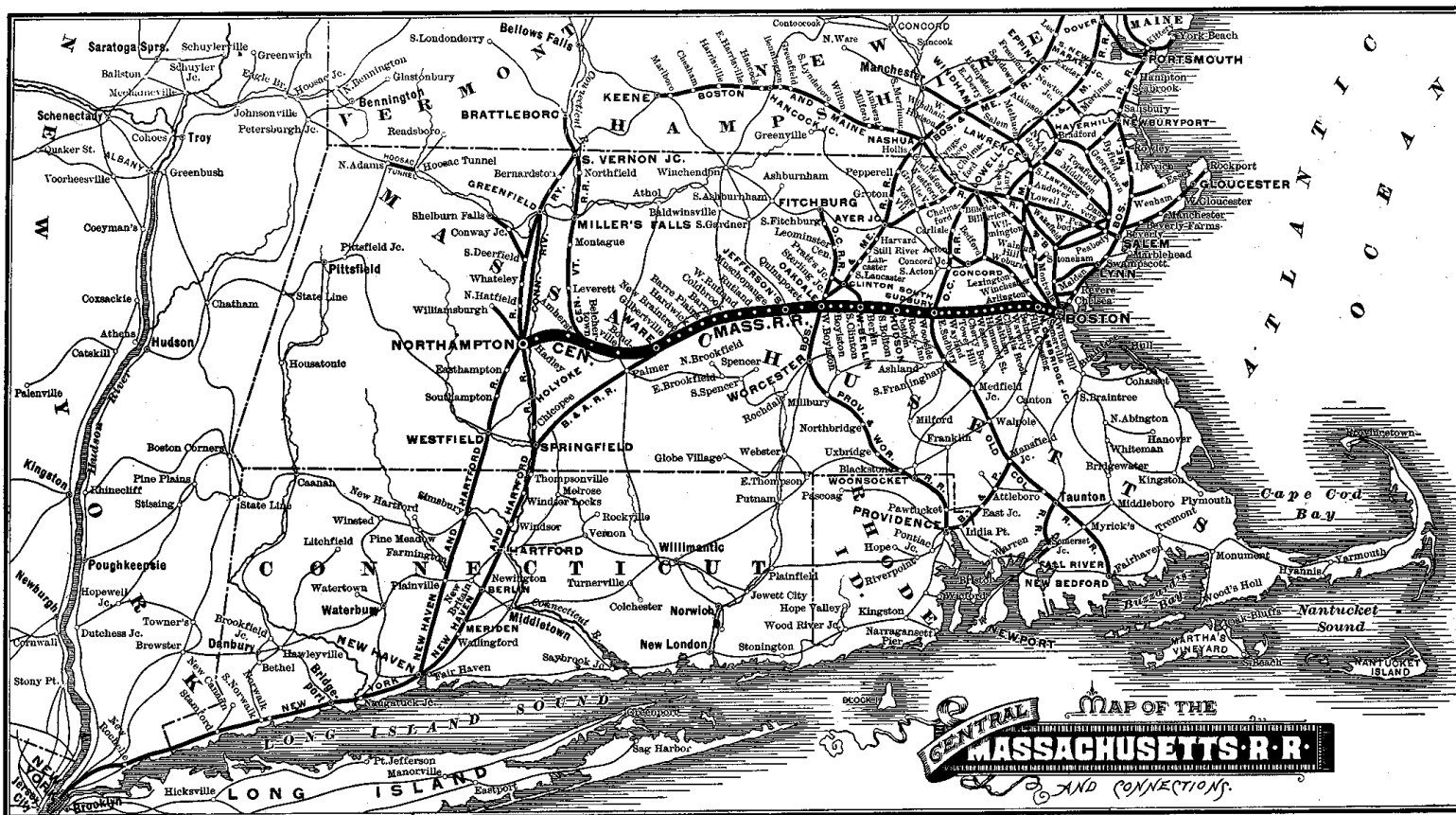


MASS CENTRAL RAIL TRAIL

Update and Status

2013 Massachusetts Trails Conference



dcr
Massachusetts



MCRT - Wayside Berlin to Waltham

Mass Central
Rail Trail -
Waltham to
Berlin Section



Legend

☐ MA Towns..Solid Outline

Major Roads

Road Classification
 Limited Access Highway


— Multi-lane Hwy, not limited access

— Other Numbered Highway

Bay Circuit Trail

— Bruce Freeman RT

Assabet River RT

 MCRT - MBTA Corridor

dcr
Massachusetts



For planning purposes only.
Data from MassGIS, DCR, EOT Val Maps.



MCRT – Wayside - Wayland

Mass Central
Rail Trail -
Wayside Branch

Wayland, MA



Legend

- MBTA ROW - DCR Lease
- Proposed Path Development Corridor
- Road Crossing
- Bridge
- Underpass
- Bridge - Overgrade - Missing
- MA Towns Solid Outline
- DEP Wetlands (1:12,000)

dc
Massachusetts



For planning purposes only.
Data from MassGIS, DCR, EOT Val Maps.

MCRT – Wayside - Wayland

Mass Central
Rail Trail -
Wayside Branch

Wayland, MA



Legend

- MBTA ROW - DCR Lease
- Proposed Path Development Corridor
- Road Crossing
- Bridge
- Underpass
- Bridge - Overgrade - Missing
- MA Towns..Solid Outline
- DEP Wetlands (1:12,000)

dc
Massachusetts



For planning purposes only.
Data from MassGIS, DCR, EOT Val Maps.

MCRT – Wayside - Wayland

Mass Central Rail Trail - Wayside Branch

Wayland, MA



Legend

- MBTA ROW - DCR Lease
- Proposed Path Development Corridor
- Road Crossing
- Bridge
- Underpass
- Bridge - Overgrade - Missing
- MA Towns..Solid Outline
- DEP Wetlands (1:12,000)

dc
Massachusetts



For planning purposes only.
Data from MassGIS, DCR, EOT Val Maps,

Wayland



Wayland



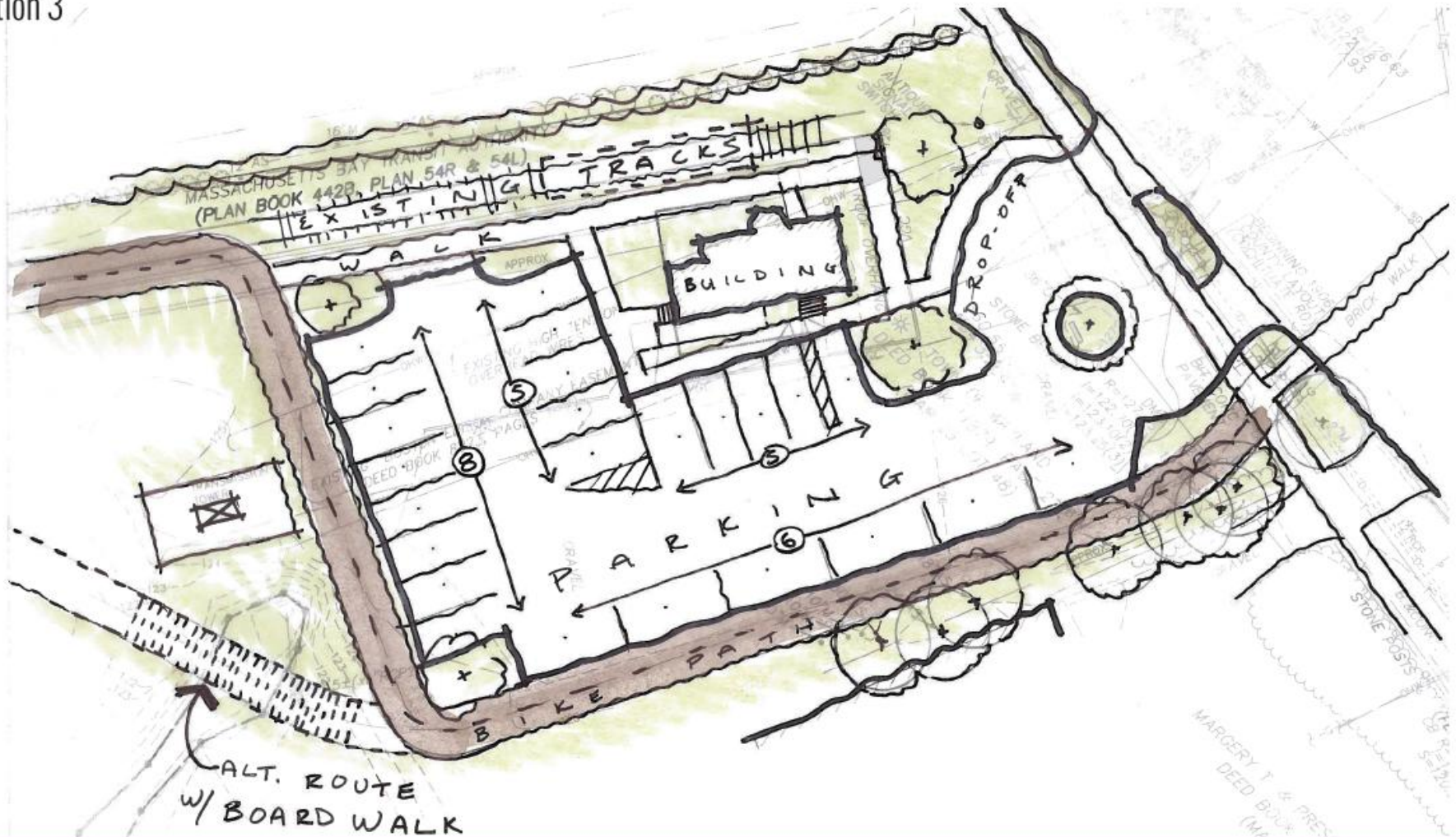
Wayland Town Center
July 16, 2013

Wayland

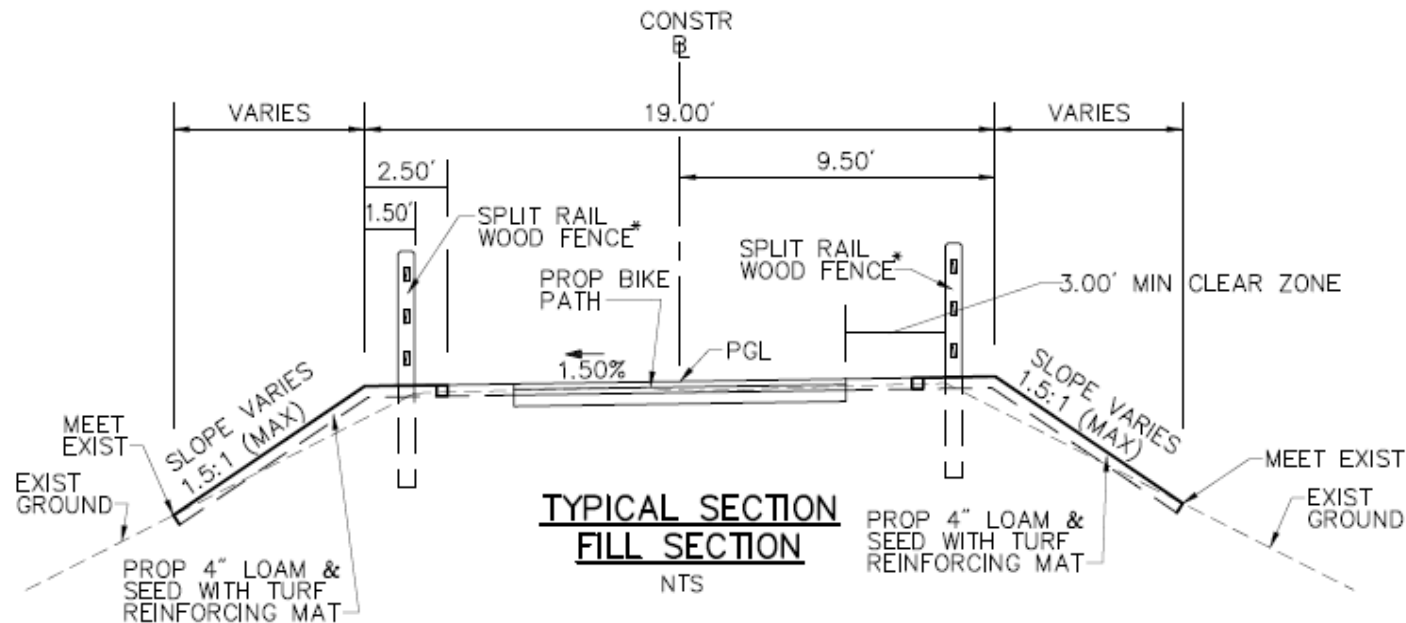


Wayland

Option 3



MCRT – Wayside Branch – Typical “fill” section

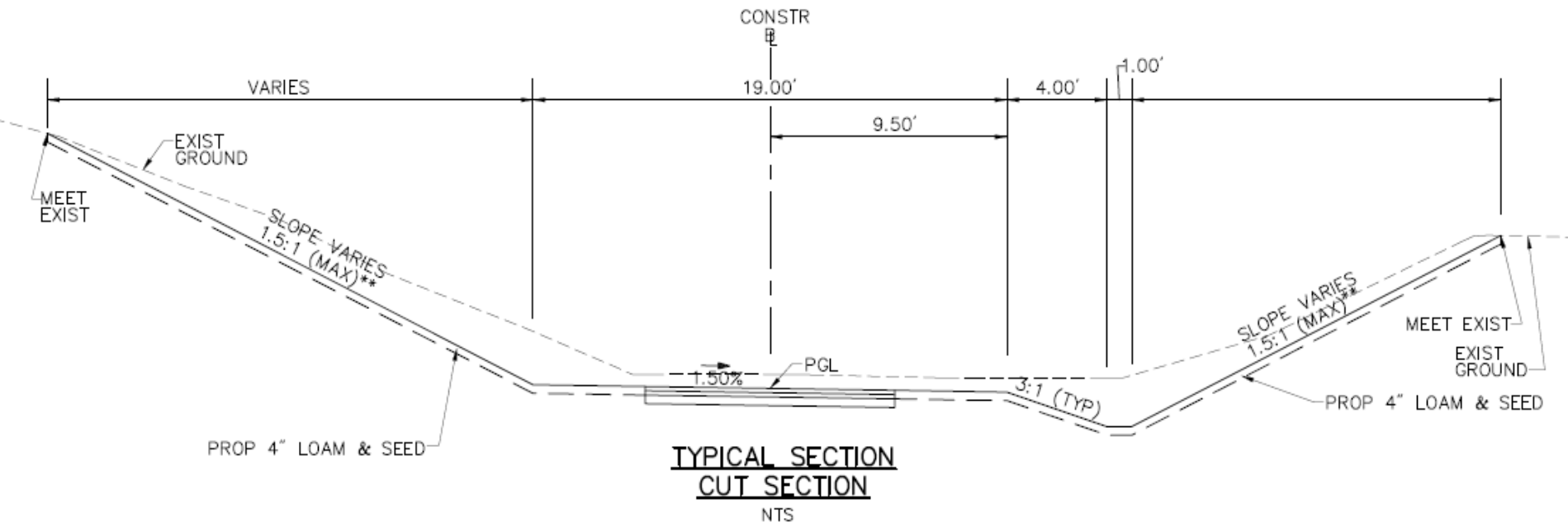


* SPLIT RAIL FENCE TO BE USED ONLY AS NEEDED

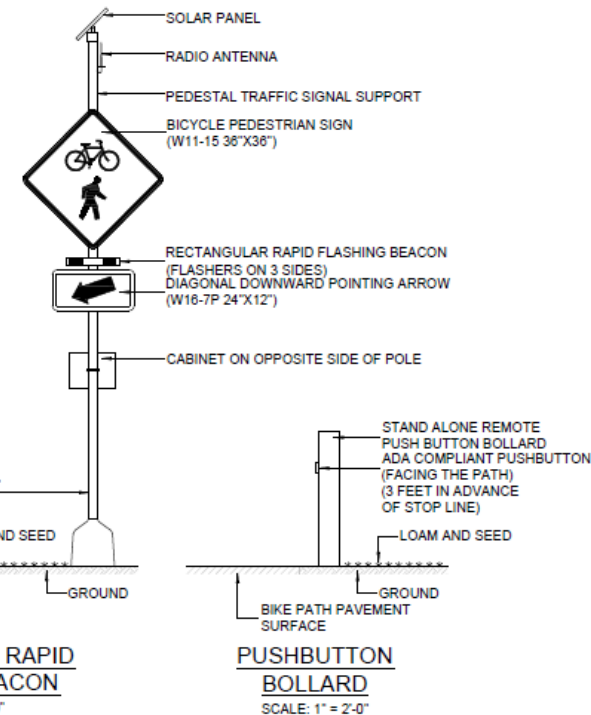
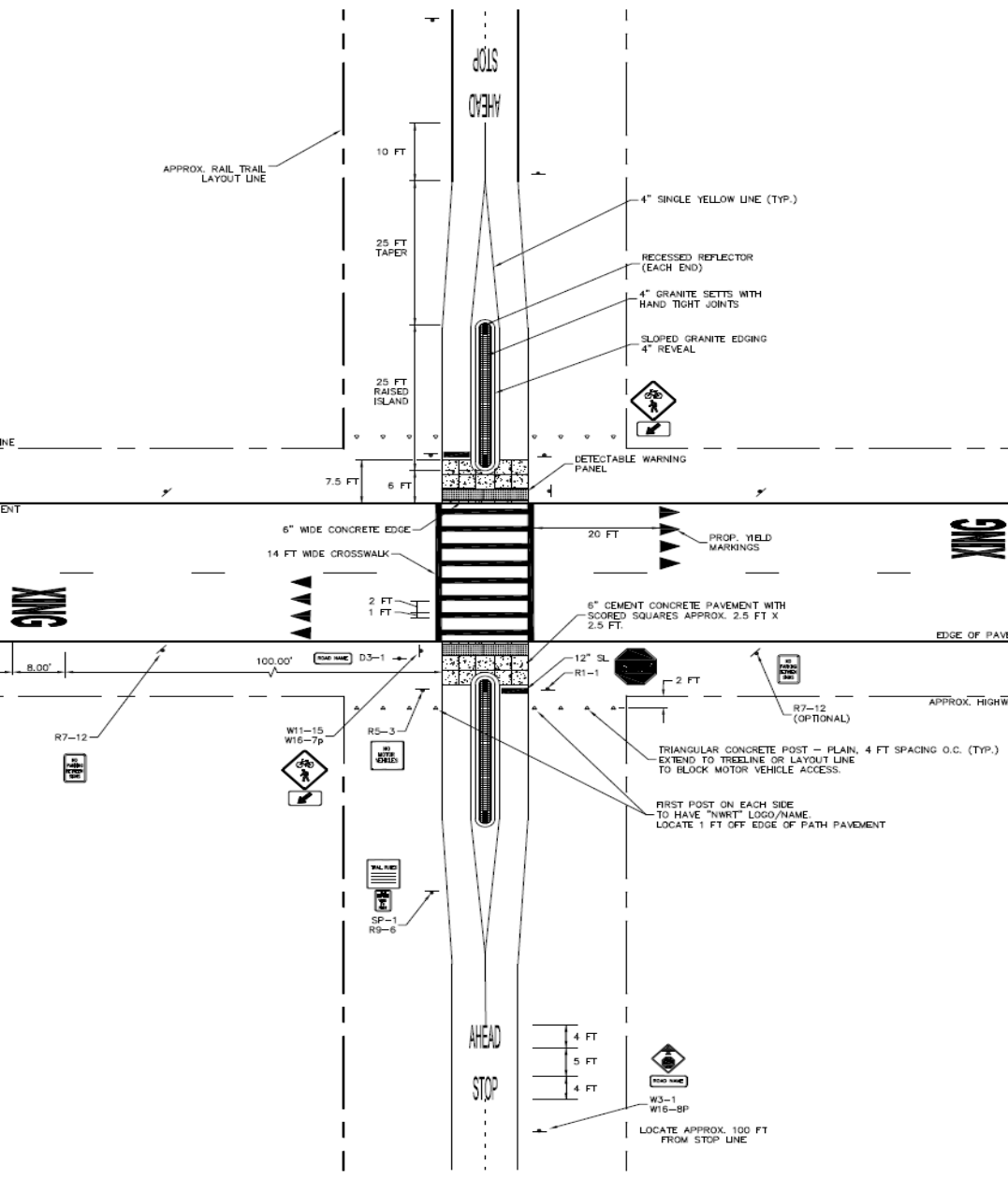
CONSTRUCTION DETAILS
1 OF 16

MASS CENTRAL
RAIL TRAIL

MCRT – Wayside Branch – Typical “cut” section



MCRT – Wayside Branch – Typical road crossing



**RECTANGULAR RAPID
FLASHING BEACON**

SCALE: 1" = 2'-0"

**PUSHBUTTON
BOLLARD**

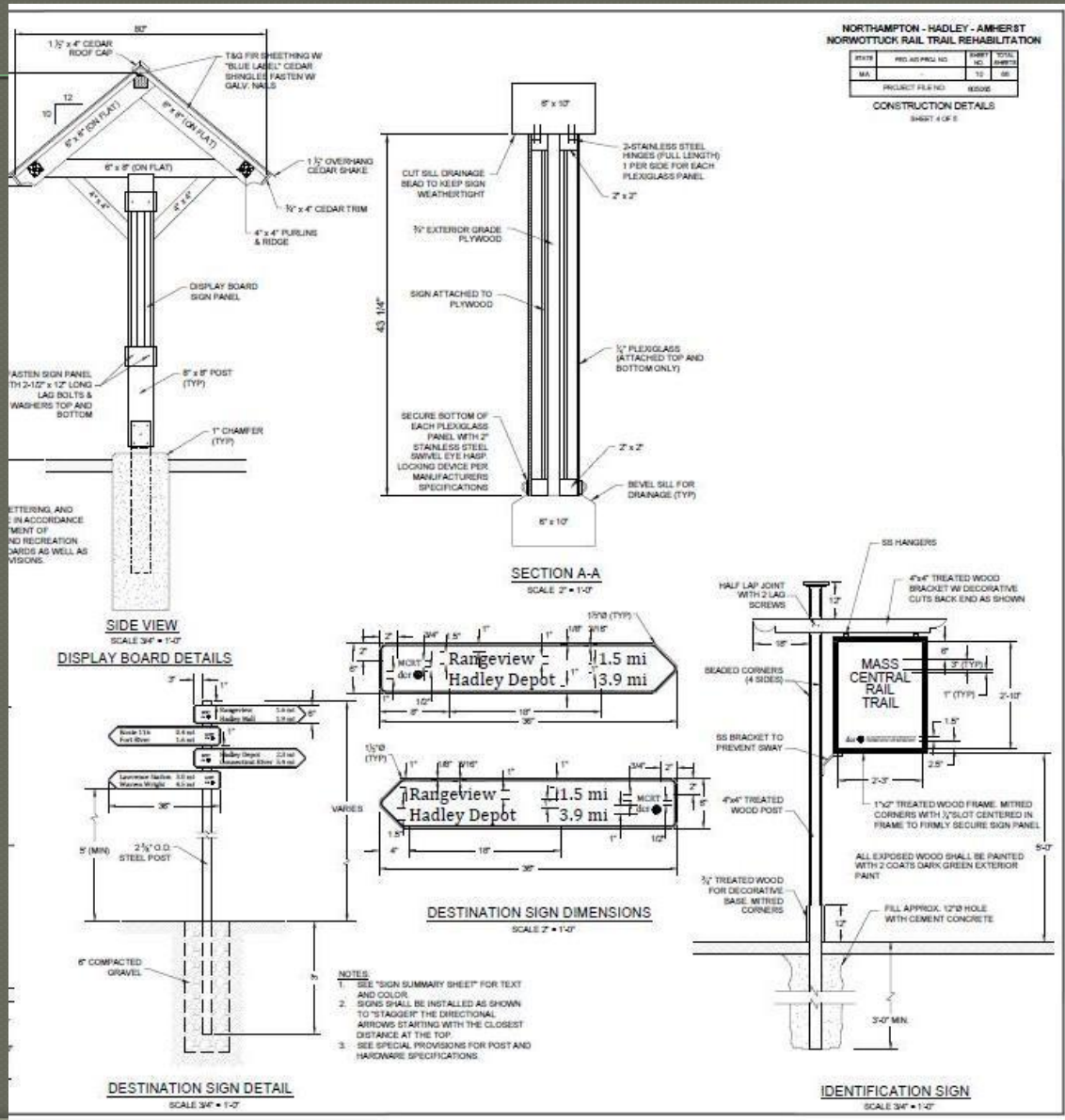
SCALE: 1" = 2'-0"

SOUTH MAPLE STREET CROSSING DETAIL

NOTE:

1. STAND-ALONE BOLLARD AND RECTANGULAR RAPID FLASH BEACON SHALL BE INSTALLED ON BOTH SIDES OF THE INTERSECTION AT SOUTH MAPLE STREET.
2. THE ACTIVATION LENGTH OF THE FLASHING LIGHTS SHOULD BE PROGRAMMED AS 13 SECONDS BASED ON THE MUTCD PROCEDURE.
3. PUSHBUTTON BOLLARDS SHALL BE INSTALLED AT 3 FEET IN ADVANCE OF STOP LINE AND WITHIN 10 INCHES OF THE EDGE OF PAVEMENT.
4. RRFBS SHALL BE INSTALLED AT 5 FEET TO THE EDGE OF ROADWAY AND 4 FEET TO THE EDGE OF RAIL TRAIL.

MCRT – Wayside Branch – Typical signage



DCR Environmental Assessments and Permitting

- DCR conducted a Phase One Environmental Site Assessment of the entire corridor in 2009
 - Including a soil sample program
- DCR submitted an Expanded Environmental Notification Form (EENF) to MEPA 2013
- DCR received a waiver from an EIR 2014
- DCR seeks to work in partnership with municipalities on Wetland and Historic permitting

Infrastructure

Project Wide:

● Bridges

- 10 Existing Bridges
- 4 Missing Bridges

● 5 Existing Underpasses

- 4 filled underpasses
- As many as 69 culverts and cattle passes

Wayland Extent:

- 1 Bridge (Sudbury River)
- 7 at-grade crossings
- 9 Culverts

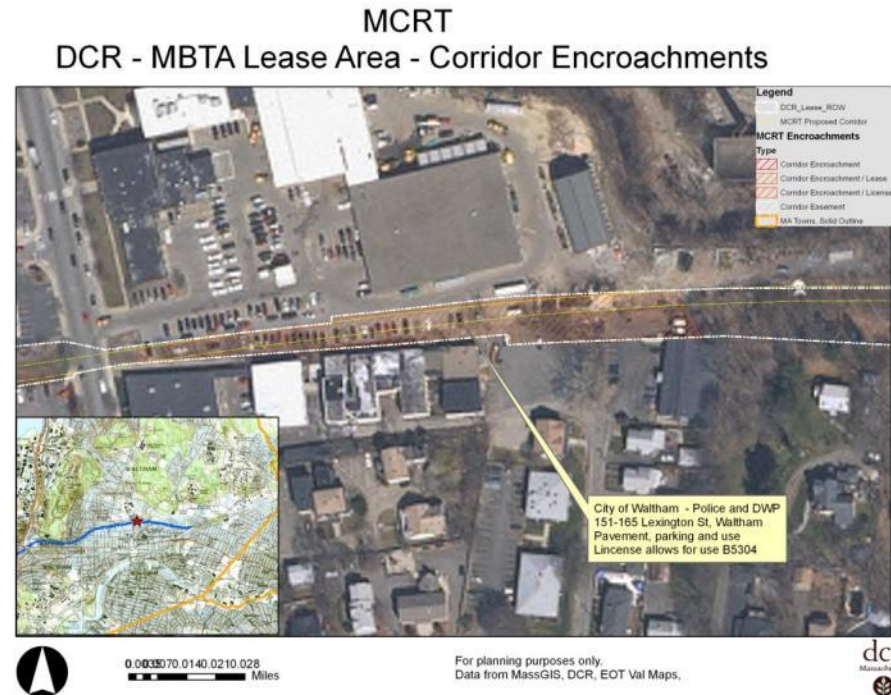
Wayland Sudbury Riiver



8 bent, timber pile bridge



DCR has identified licenses and potential encroachments in the corridor and is working to address them



Preliminary Cost Estimates

- Wayland 3.0 miles
- Crossings at Boston Post Rd, Routes 27 and 126, Millbrook Rd, Glenn Rd, and Plain Rd.
- Conceptual Cost Estimate \$4,306,000
- Based of prices from similar MassDOT / DCR projects

Next Steps

- Working to set up stakeholder meeting with communities
- Need to advocate and identify funds for design, permitting and construction
- Need to initiate wetland and historic permitting with municipalities
- Need to refine bridge and cost assessments