

MCRT - Wayside Update

AGENDA

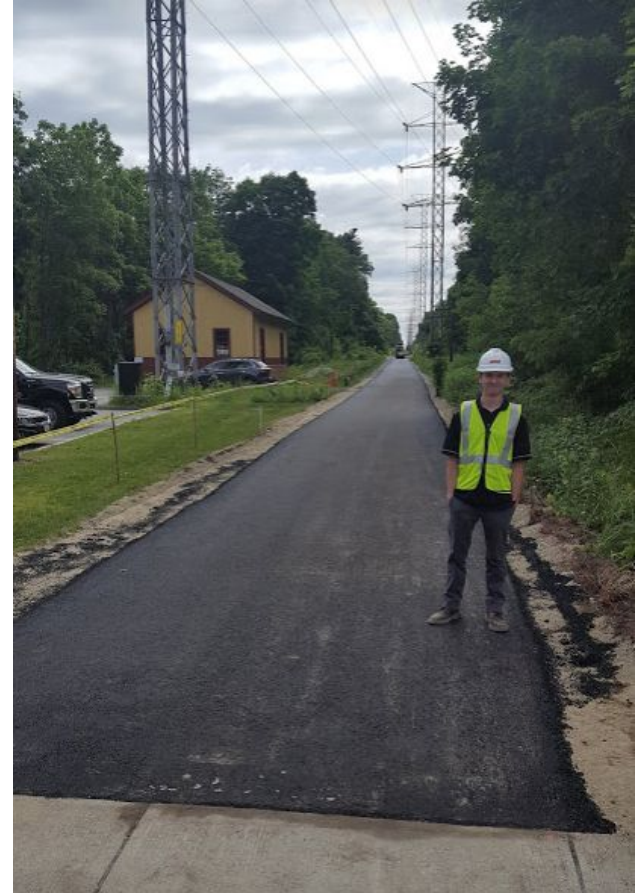
What do you want to hear/discuss about the trail?

The MCRT - Wayside - Wayland and Weston

The MCRT east to Boston

The MCRT west to Northampton -

Questions, comments on MCRT?



20+ Years of Wayland Rail Trail Support

1996 - Ed Wallner becomes Waylands Representative to the [MCRT Committee](#)

1997 - Wayside vote - Weston did not approve

2007 - Town Center Developer \$250k

2008- DCR Signs Lease for ROW

2009 - Wayland Approves Feasibility Funds 25k

2015 - Wayland Approves CPA Funds \$450k

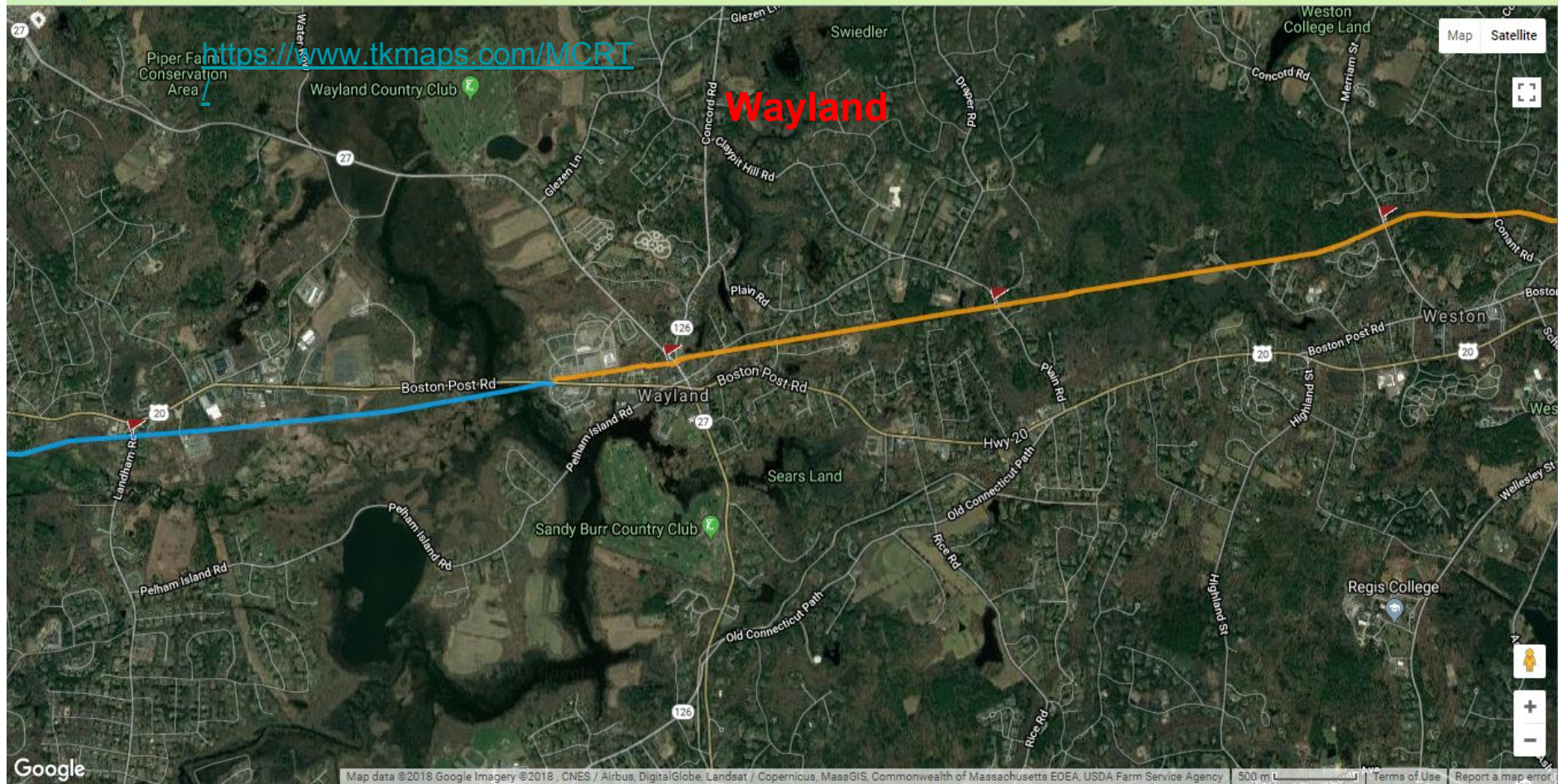
2016 - Wayland constructs first half mile trail and completes road crossings

2017 - Eversource commits to building base road from 126 in Wayland and Fitchburg Line in Weston

2017 - DCR identifies funds to pave and complete trail

2018 - DCR begins paving

Mass Central Rail Trail





MCRT-
Wayside trail
Wayland

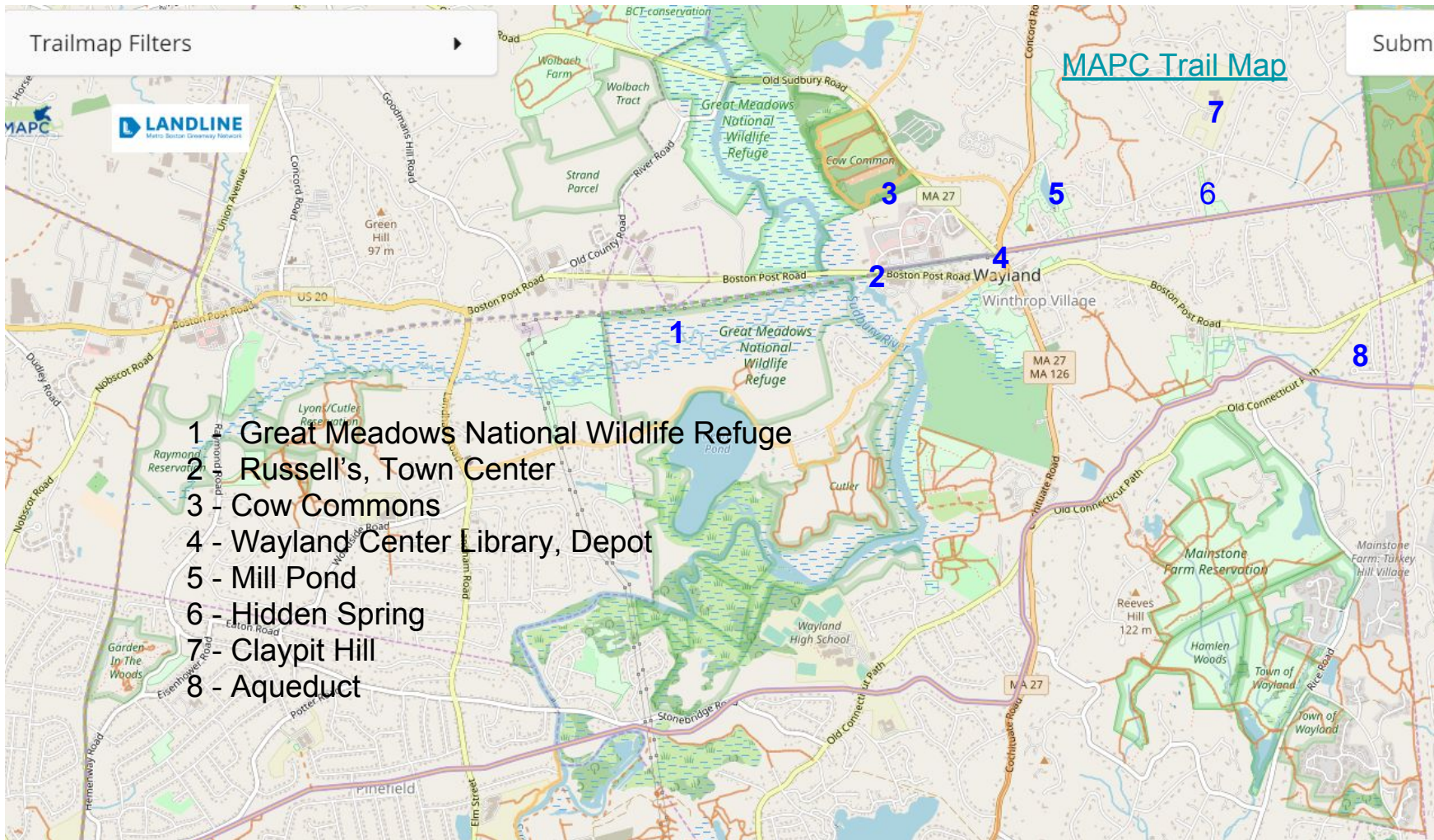
Trailmap Filters



Submit

MAPC Trail Map

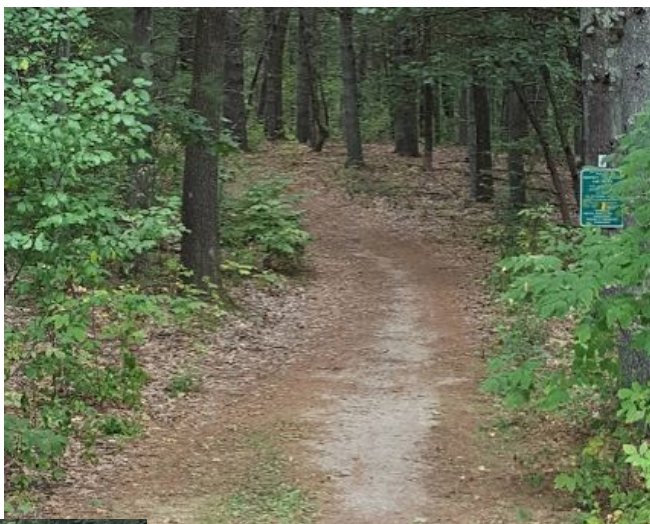
- 1 - Great Meadows National Wildlife Refuge
- 2 - Russell's, Town Center
- 3 - Cow Commons
- 4 - Wayland Center Library, Depot
- 5 - Mill Pond
- 6 - Hidden Spring
- 7 - Claypit Hill
- 8 - Aqueduct



<https://www.tkmaps.com/MCR/>

Weston





MCRT- Wayside trail Weston





Department of Conservation and Recreation

Welcome To

MCRT - Wayside



DCR VISITOR GUIDELINES

- Carry In, Carry Out
- Stay Right Except to Pass
- Dogs on Short Leash Welcome, Remove All Waste
- Open Dawn to Dusk

The following are prohibited:



Failure to comply may result in arrest
and/or fine per order of MGLC 302, 2.0

• In case of emergency call 911
Partnership with Town of Weston, MA

dc
Massachusetts



Trailmap Filters

MAPC Trail Map

Submit Feedback

On and Near Trail:

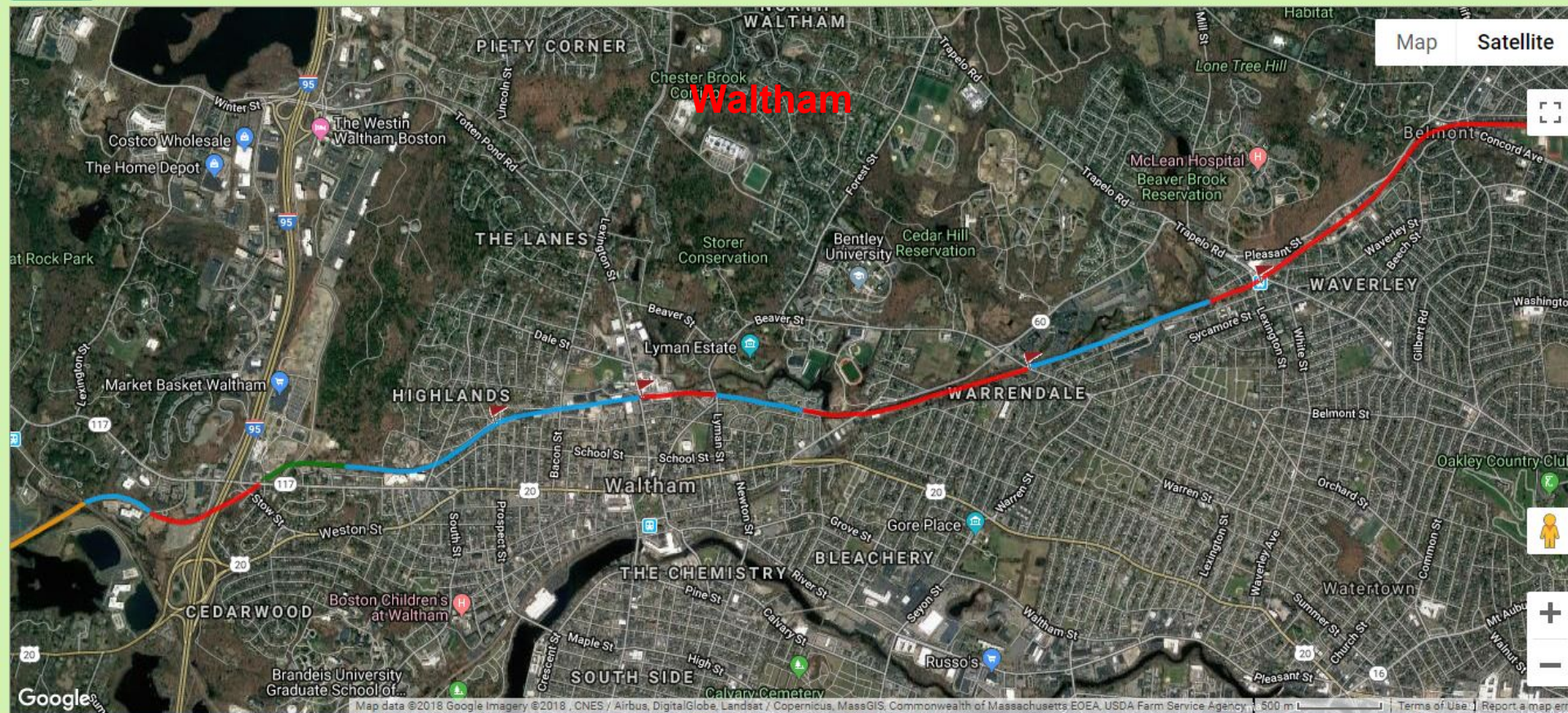
- 1 - Sears Land - Duck Pond, Hiking trails
- 2 - Kendall Commuter Rail Stop
- 3 - Weston Center and Green
- 4 - Conant Road.
- 5 - Concord Road.
- 6 - Sunday Woods Conservation Land
- 7 - Gun Club Lane (parking) , Olgilvie
- 8 - Jericho Town Forest
- 9 - Bay Circuit Trail
- 10 - Weston Observatory, Burchard Park and College Pond,

To the South:

- Weston Aqueduct
- Regis College, Highland Street Forest
- Case Estates
- Weston Reservoir

MCRT to Boston...

Mass Central Rail Trail



Map

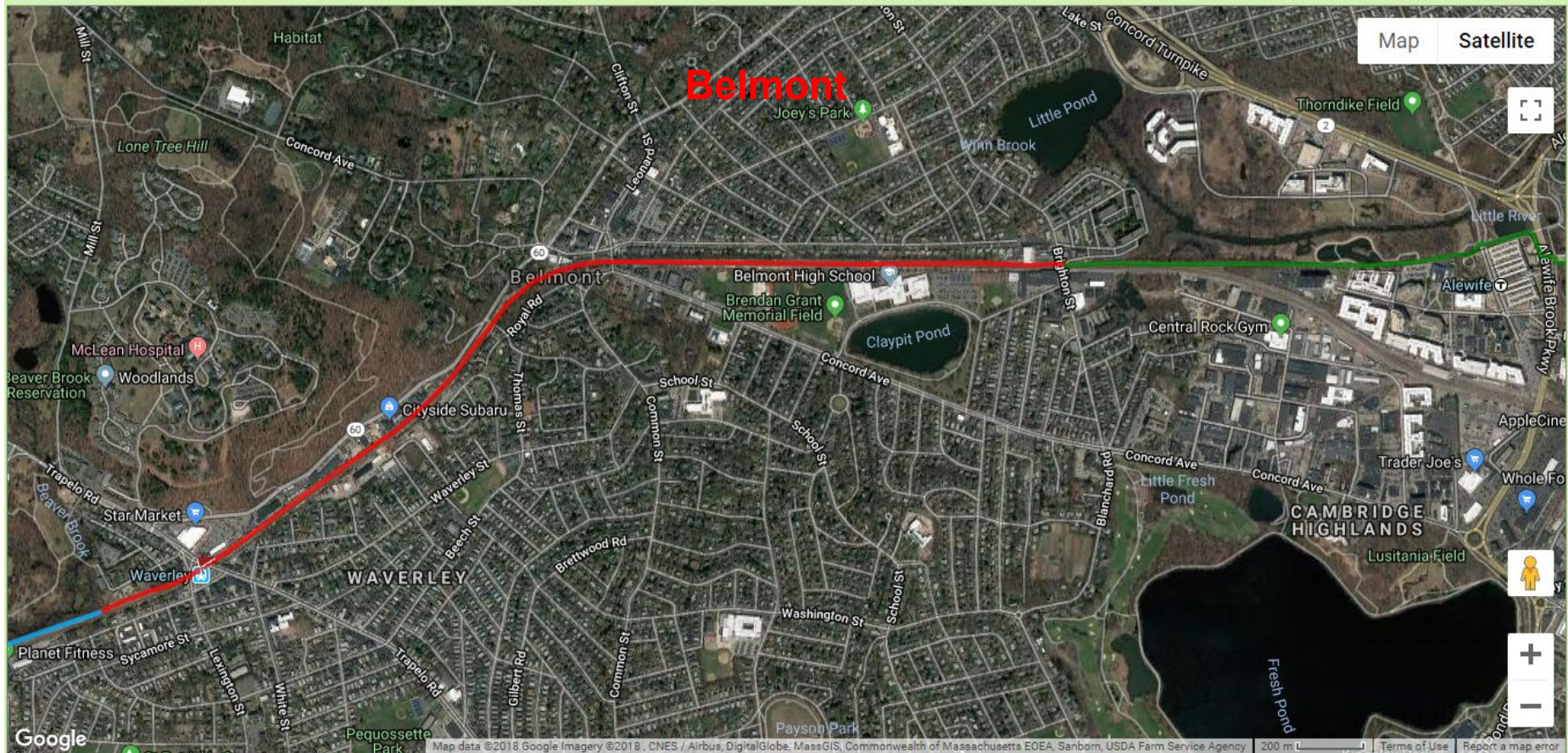
Satellite



2017-2020 Time Line

- 2017 Mayor requests CPA funds for design
 - City Council approves
- Open bid; Pare Corp hired ~\$400,000 design
 - Border to border surveyed; survey confirms challenges re: Belmont & Weston connections.
 - Initial construction plan is 3 miles of inner segment, leaving a gap in connections with Belmont and Weston
- So far in 2018: 25% design, public engagement
- Construction Plans, Specs, Estimate late 2018
- Potential construction in 2019/2020 if funded

Mass Central Rail Trail



RECOMMENDED ROUTE

W6, W7b, W8, W9b, C1e, C2a, C3a, C4a, E1a, E2a, E3b, E4a = 76 Average Score

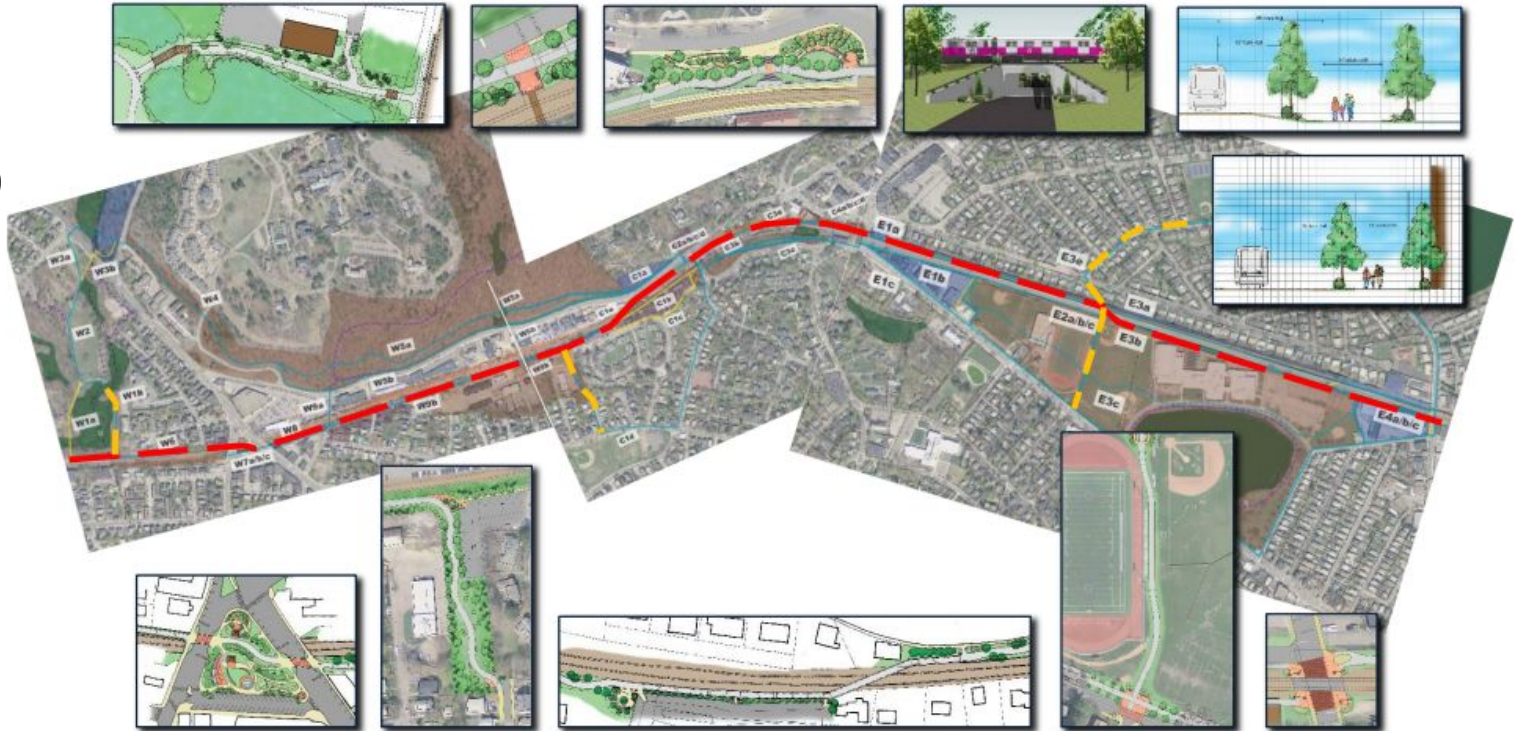
\$27.9 Million

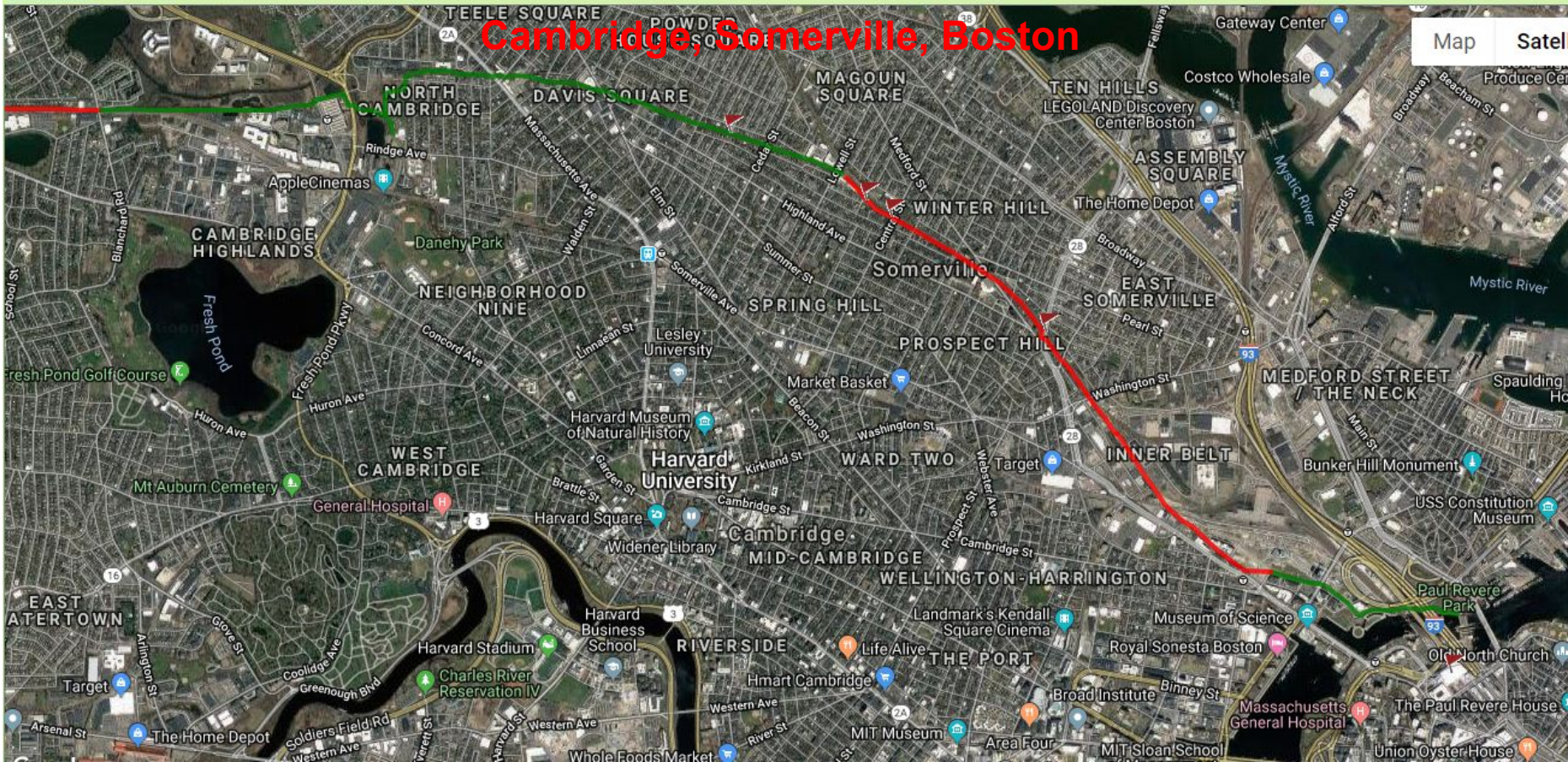
Belmont

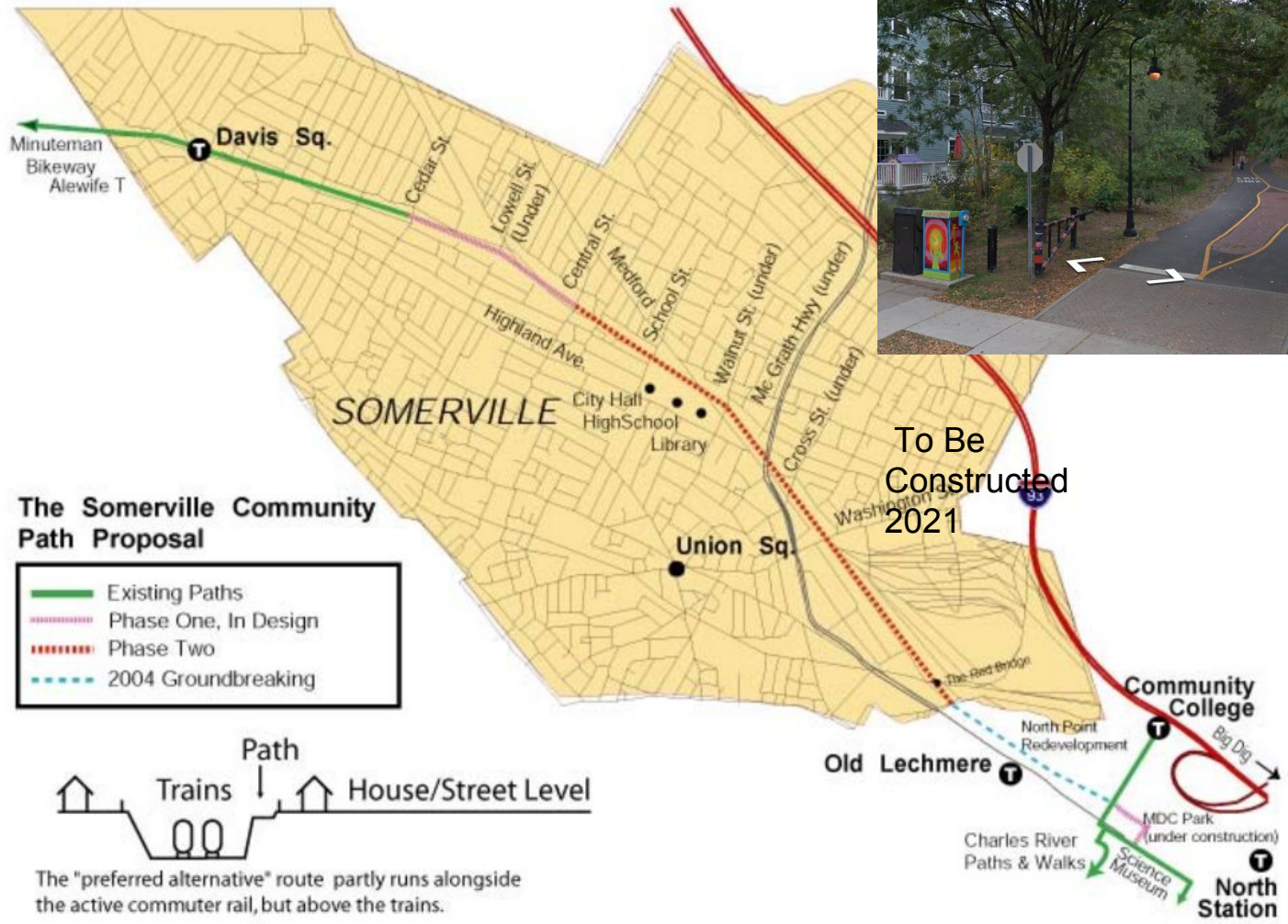
-Design study 2019

-First Belmont
Center and East

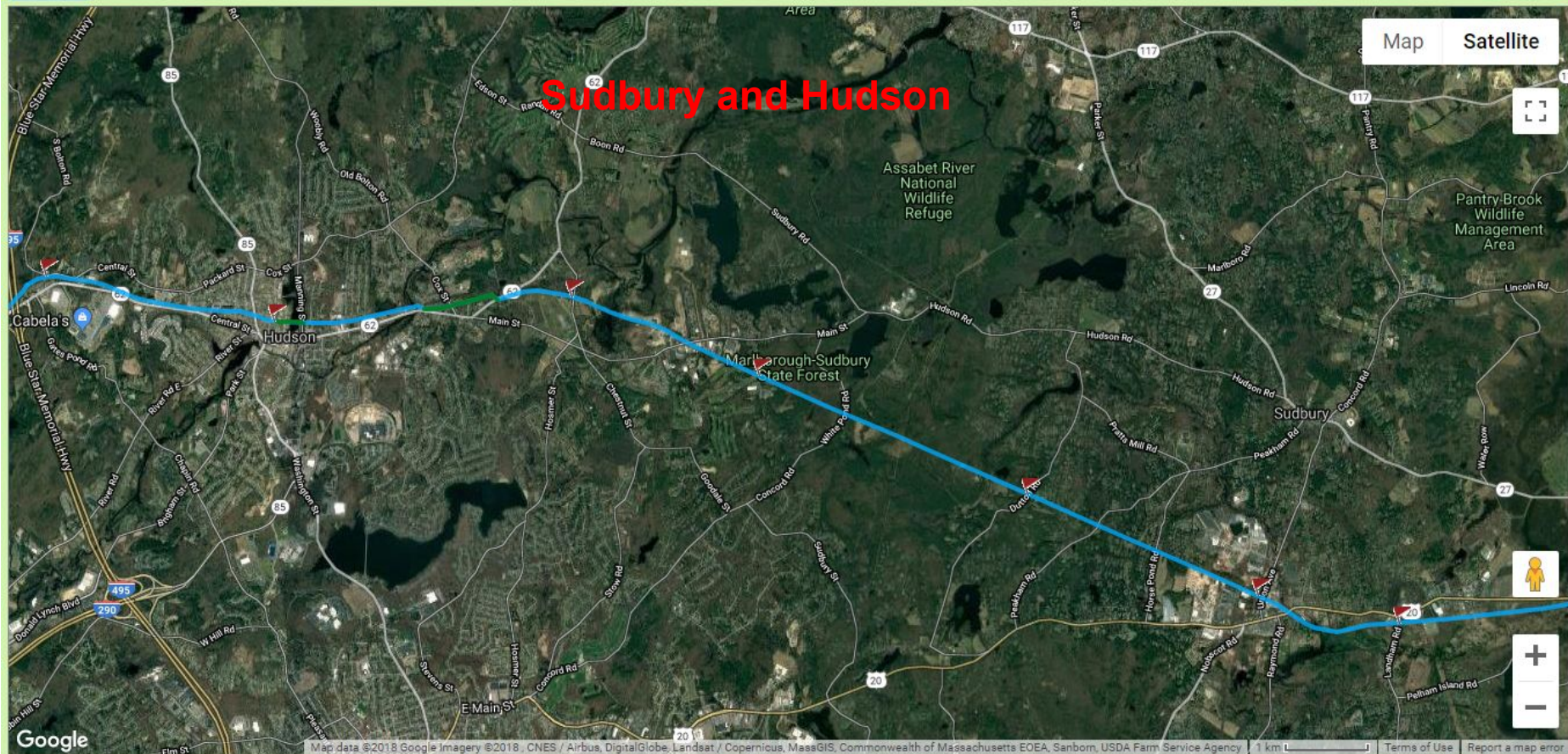
- Then West to
Waltham







MCRT to the West...



Destinations in Sudbury Hudson

Bosse Sports

Route 20, Mill Village, Goodnow Library

Feely Field -Tennis Courts

Bruce Freeman Rail Trail (2024?)

Chiswick Park medical facilities, sports center

Wholefoods

Stone Tavern Farm with connecting trails to Nobscot

State Crime Lab.

Hop Brook Conservation Land

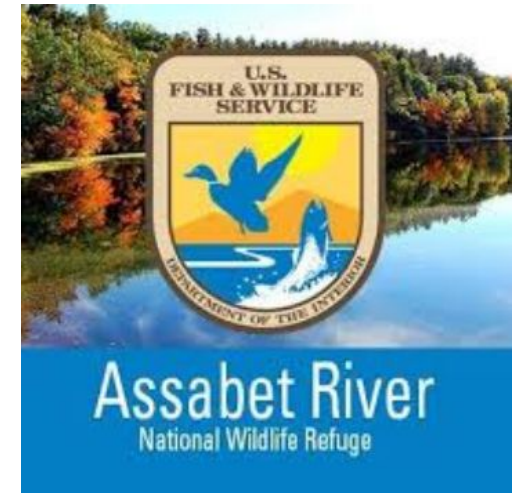
Sudbury Valley Trustees Memorial Forest

Assabet River National Wildlife Refuge

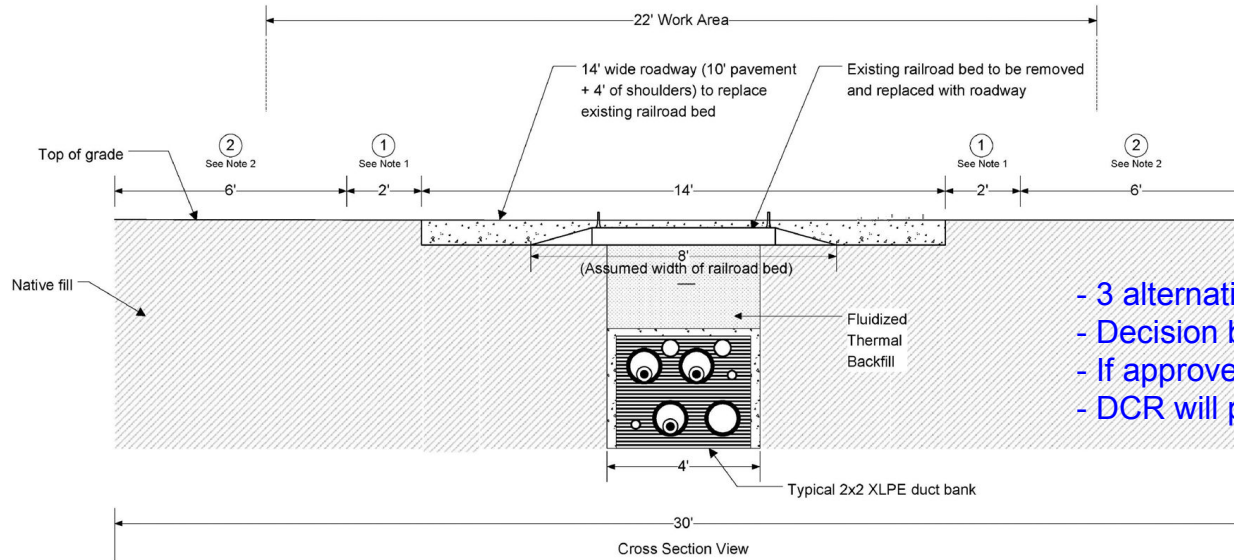
Marlboro State Forest

Assabet River Rail Trail (9.2 miles) Marlborough, Hudson, Stow, Maynard, Acton

Hudson Center



Sudbury/Hudson Underground in ROW



- 3 alternatives - this is preferred by Eversource
- Decision by EFSB this fall/winter
- If approved construction could begin 2019/2020
- DCR will pave

April 2017

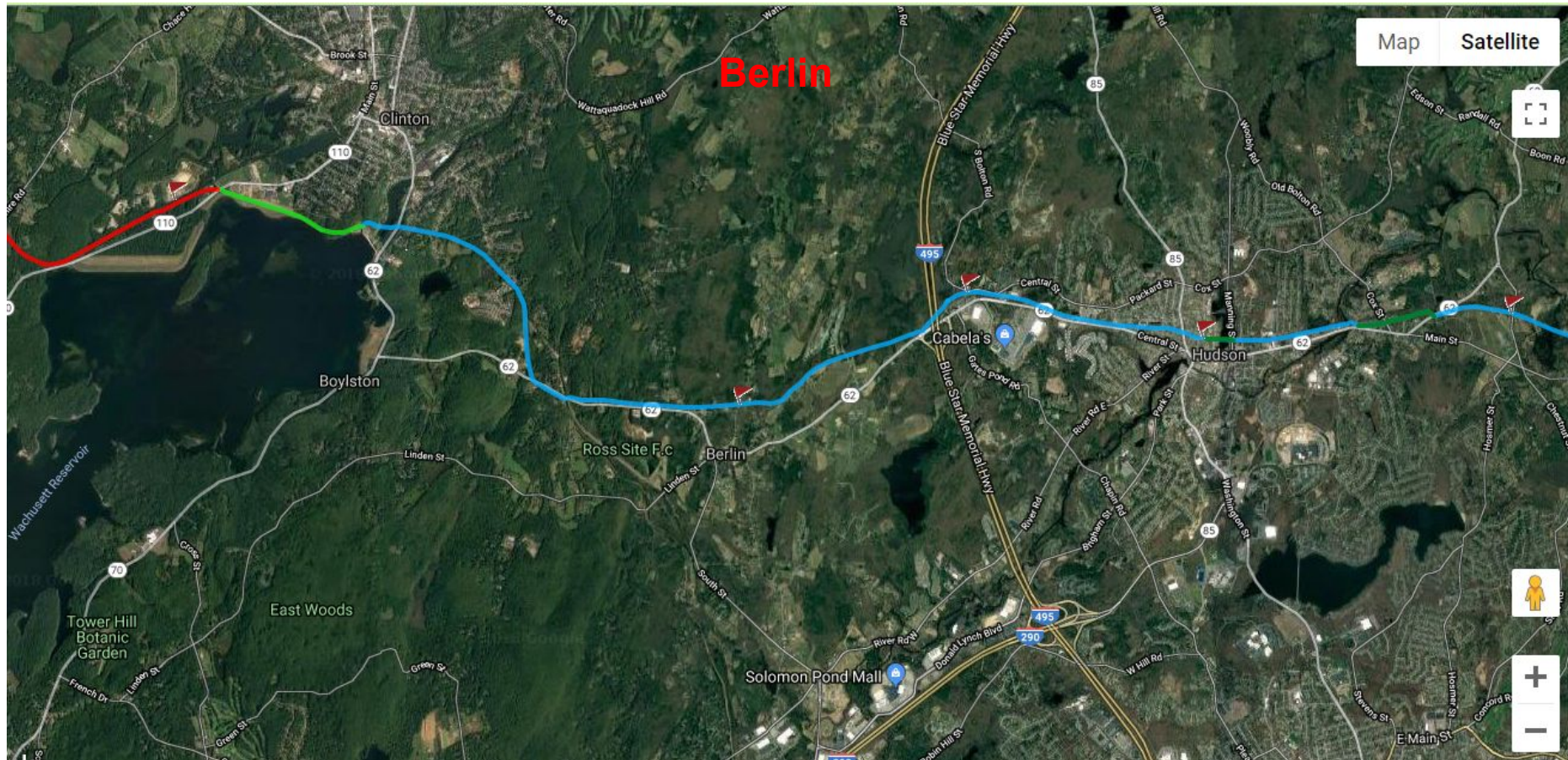
EVERSOURCE
ENERGY

Sudbury-Hudson Transmission Reliability Project

Analysis to Support Petitions before the Energy Facilities Siting Board

Notes

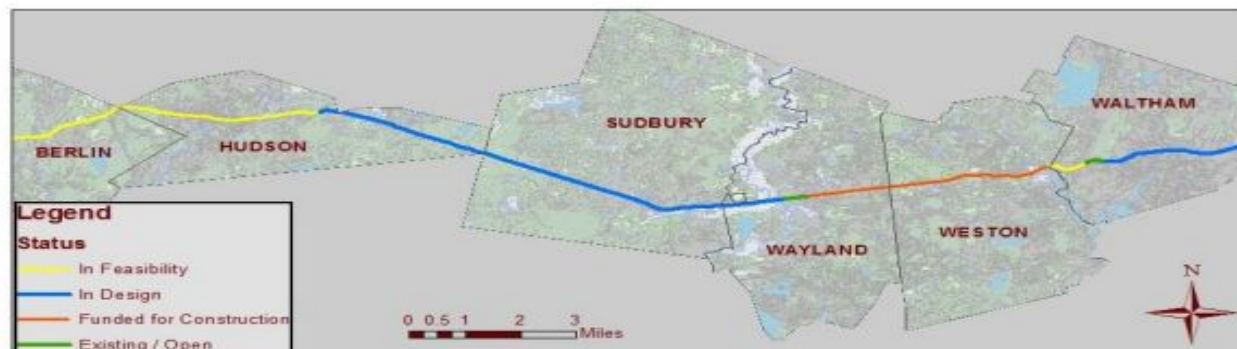
1. No woody vegetation; slope to be determined.
2. Plantings to be allowed, limited wood vegetation.
3. Not to scale.
4. XLPE duct bank installation location to vary across the entire route.



Segment	Length	Status	Funding
Waltham	3 miles	City has released an RFP for design and permitting	City CPA funds
Weston / Wayland	4.5 miles	Partnership with EverSource to design, permit and construct rail trail	Construction by Eversource and DCR 2018
Wayland Town Center to Sudbury Sub-station	1.5 miles	Under Design and permitting by DCR	Submitted as a MassDOT Project
Sudbury to Hudson, Wilkins Ave	8 miles	Proposed buried transmission line by EverSource. Potential partnership	Eversource and DCR
Hudson to Berlin	6 miles	Design and permitting needed	TBD

Issues and Challenges:

- Need to identify additional design, permitting and construction funds
- Potential community opposition in Sudbury
- Potential for conflicting community opinions in Berlin





Inter-Agency Trail Corridor Tracking

Mass Central Rail Trail - Wayside

Vision: The Mass Central Rail Trail (MCRT) is among the Commonwealth's highest priority initiatives, envisioned as a 104-mile multi-use trail from Boston to Northampton. Approximately 30 miles currently exist across the state.

The Wayside section is 23 miles from Waltham to Berlin, owned by the MBTA and leased to DCR for trail development. The MCRT – Wayside will link across urban, suburban and rural communities providing unparalleled transportation and recreation facilities.



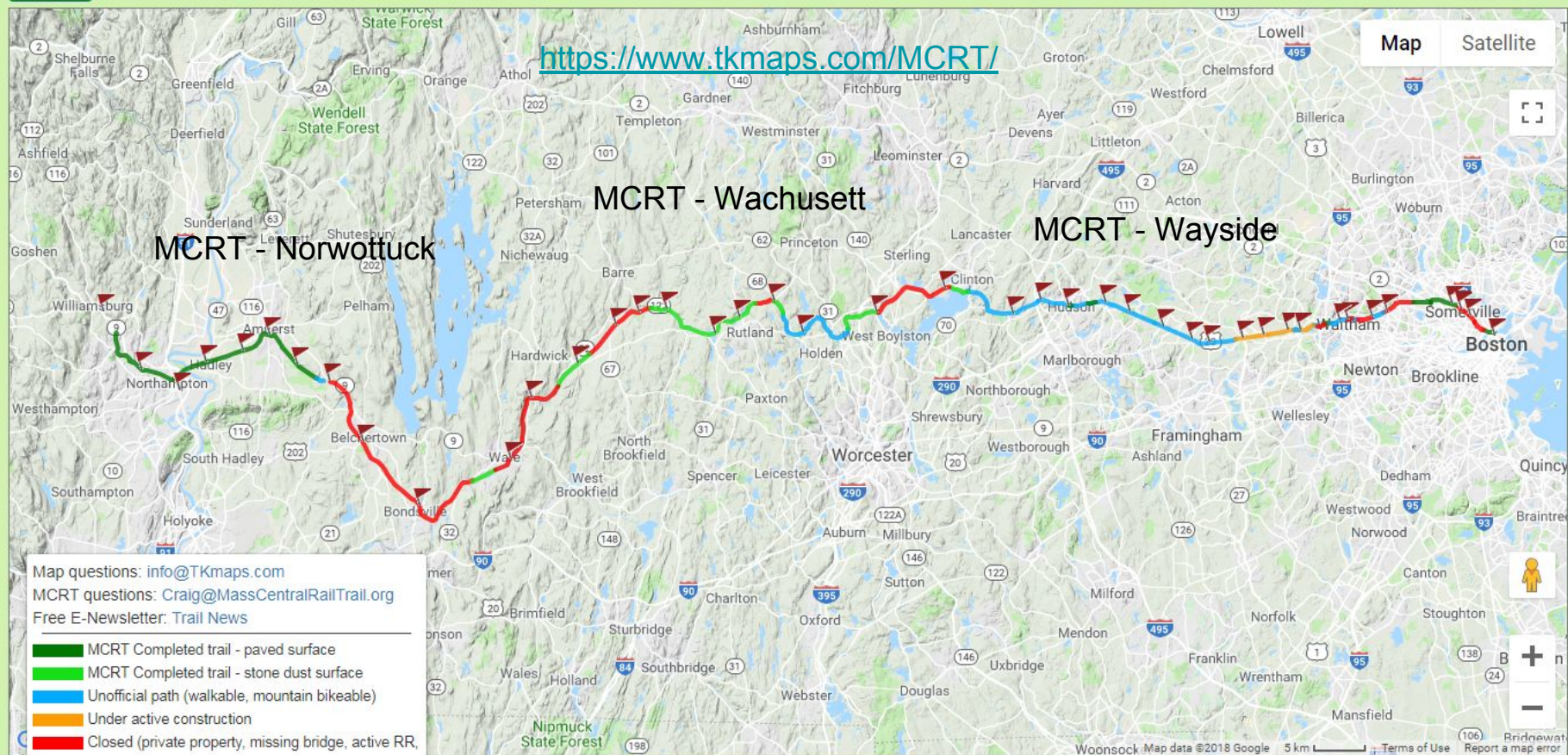
Historic and Envisioned, Church Street, Weston

Partnership Opportunities:

The MCRT – Wayside offers exciting opportunities for state, municipal and private partnerships to realize the vision. These include,

- Partnering with the municipalities to design, permit, and / or construct the MCRT – Wayside (e.g. Wayland Town Center, Route 20 to Route 126).
- Working with developers to include the MCRT – Wayside in their development plans (e.g. former Polaroid site, Waltham).
- Partnering with EverSource Energy to permit and construct the base of the trail, on which DCR will pave the final trail (e.g. Wayland and Weston)
- DCR, MBTA and MassDot partnership.

Mass Central Rail Trail



Thank you

Happy Trails!