

**SUPPLEMENTAL  
PACKET**

**Oct 18**

**2021**

The following list of documents have been added to the Supplemental Packet of the Board of Selectmen Meeting for 10.18.2021 and are labeled according to their corresponding agenda item.

3. Fire Station #2 PowerPoint

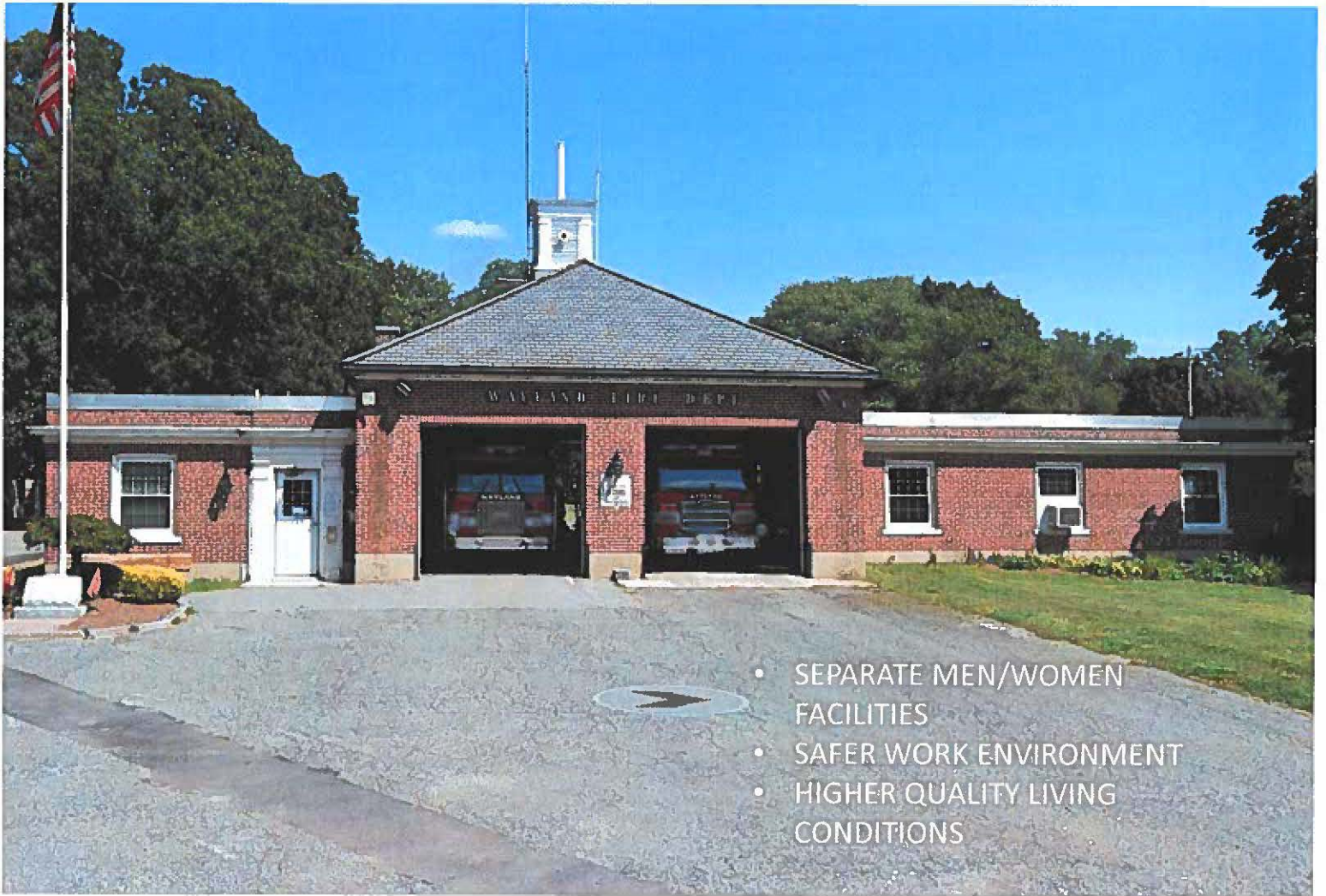
4.1. Memo from Louise Miller, Town Administrator; and Anna Ludwig, Town Clerk about Reprecincting

4. 2. Reprecincting data courtesy of William Galvin, Census Liaison

5. STM 2021 Warrant

6. Workplan for COA/Community Center as provided by Betsy Soule

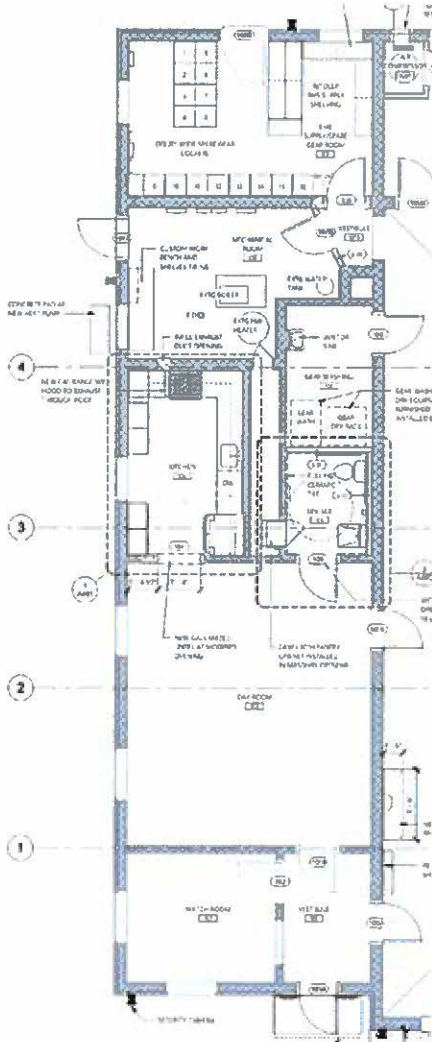
## FIRE STATION #2 RENOVATIONS



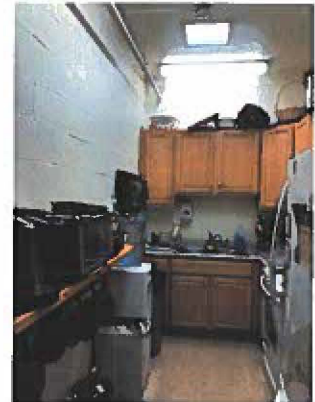
- SEPARATE MEN/WOMEN FACILITIES
- SAFER WORK ENVIRONMENT
- HIGHER QUALITY LIVING CONDITIONS



# FIRE STATION #2 RENOVATIONS

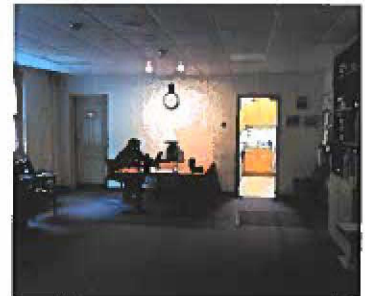


EXISTING SHOWERS



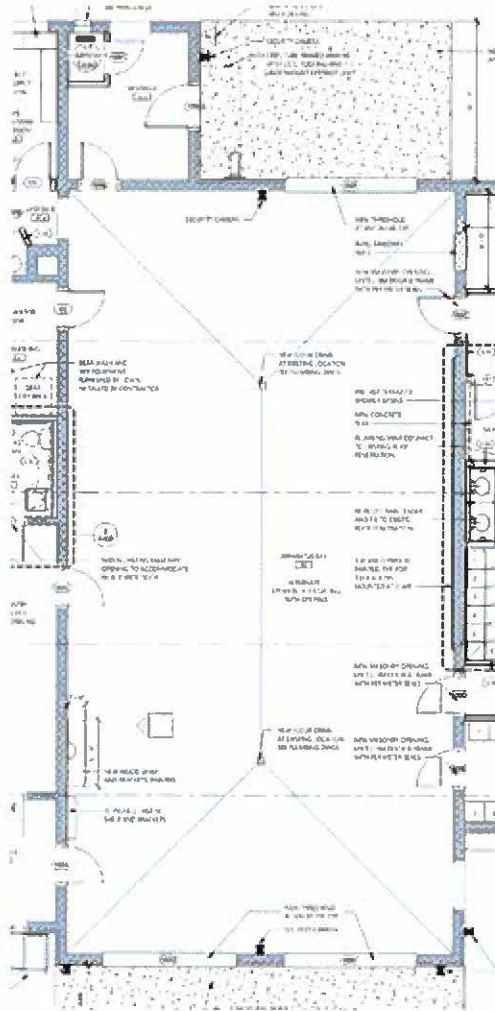
EXISTING KITCHEN

- NEW KITCHEN
- ADA COMPLIANT TOILET ROOM
- NEW GEAR WASH ROOM
- DEDICATED GEAR STORAGE ROOM
- DEDICATED GEAR WASH ROOM
- UPDATED FINISHES THROUGHOUT
- COMPLETELY NEW SYSTEMS:
  - SPRINKLERS
  - HEATING AND COOLING
  - ELECTRICAL



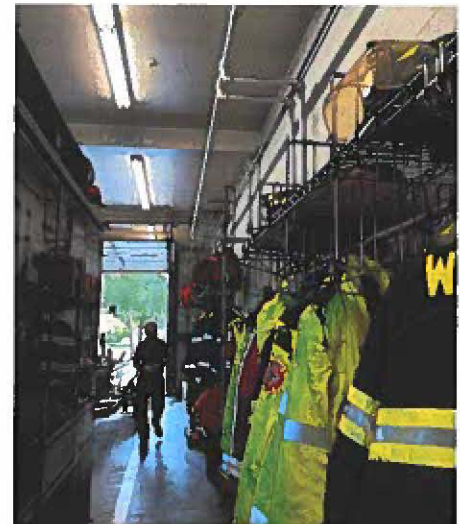
EXISTING DAY ROOM

## FIRE STATION #2 RENOVATIONS



EXISTING APPARATUS BAY ENTRANCE

- NEW APPROACH SLABS
- ADDITIONAL VEHICLE EXHAUST
- GENERAL AIR EXHAUST
- RELOCATING GEAR STORAGE TO DEDICATED ROOM
- NEW SYSTEMS THROUGHOUT
- NEW FINISHES THROUGHOUT



EXISTING GEAR STORAGE

## FIRE STATION #2 RENOVATIONS

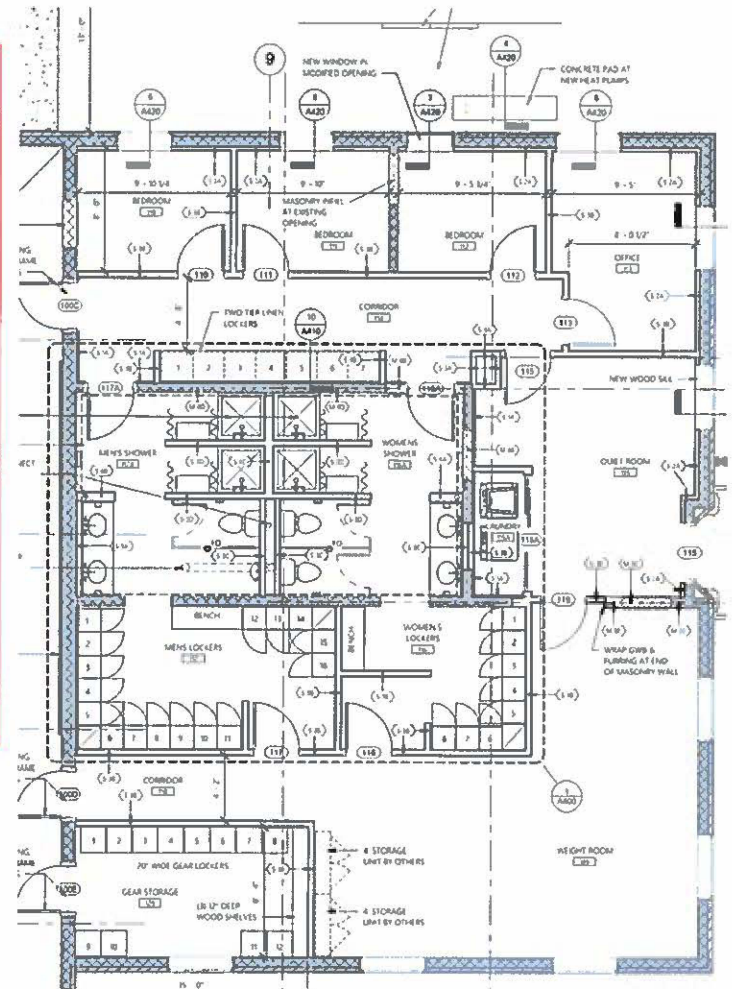


EXISTING BEDROOM



EXISTING TOILETS

- NEW BEDROOMS
- ADDITIONAL OFFICE
- SEPARATE QUIET ROOM
- SEPARATE MENS AND WOMENS SHOWERS AND CHANGING ROOMS
- ENLARGED WEIGHT ROOM
- DEDICATED GEAR STORAGE ROOM
- COMPLETELY NEW SYSTEMS:
  - SPRINKLERS
  - HEATING AND COOLING
  - ELECTRICAL



## FIRE STATION #2 RENOVATIONS

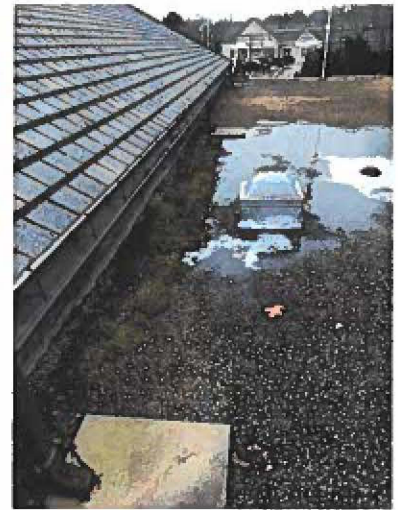
POSSIBLE ADDITIONAL SCOPE



EXISTING WOOD TRIM/BRICKWORK



- NEW ROOF
- REPAIR/PAINT EXTERIOR WOOD TRIM
- CLEAN AND REPOINT MASONRY
- REPLACE SLATE ENTRANCE LANDING
- EPOXY COATING FOR APPARATUS BAY
- FULL BUILDING GENERATOR
- NEW AWNINGS AT ENTRANCES



EXISTING ROOF



FORMER LIBRARY ENTRANCE





**TOWN OF WAYLAND**  
41 COCHITUATE ROAD  
WAYLAND, MASSACHUSETTS 01778

**MEMORANDUM**

To: Board of Selectmen  
From: Louise Miller, Town Administrator  
Anna Ludwig, Town Clerk  
Date: October 18, 2021  
Re: Wayland Reprecincting Based on 2020 Census Data

---

Each city and town is required to establish ward and precinct lines every ten years, following the Federal Census if:

- a town contains more than 6,200 residents; or
- a precinct contains more than 4,000 residents; or
- the wards of a city do not contain approximately equal numbers of residents so that a ward's population is within 5 % of the average; or
- a ward not divided into precincts contains more than 4,000 residents.

**Other Requirements:**

- Each new precinct must be "composed of compact and continuous territory" without protruding fingers or long tails to the extent possible.
- Precincts must be bounded by the center-line of streets or other well defined boundaries such as streams or other bodies of water, railroad tracks, power lines or other clearly visible geographic figures.

The Board of Selectmen has received five maps in preparation for the Wayland reprecincting discussion following the 2020 census data release.

**Map 1 – 2010 Precinct Map:** Provided for reference. If the Town does not reprecinct, it will not be in compliance with the requirement that precincts be within 5% of the average for the Town.

**Map 2 – Senate redistricting:** Wayland is entirely within a single district with communities that are closer geographically.

**Map 3 – House redistricting:** Wayland is still in 2 House districts. The proposed districts create subprecincts because the House uses the 2010 precincting map.

**Map 4 – 2020 Precinct Map version 1:** Provided by the State. While the precincts are within the 5% target rate, the variance between districts is almost 10%. The 2020 Precinct Map version 1 creates subprecincts and a large number of voters within a single precinct who receive a different ballot for House elections.

**Map 5 – 2020 Precinct Map version 2:** Developed by the Town and recommended by the Town Clerk – closer to even precincts and reduces the number of voters affected by the subprecincting that the House districting produces.

Wayland 2020

New VTD	Old VTD	Block ID	TotalPop	WHITE	BLACK	ASIAN	Other	NHPI	AIAN	Pop2Rare	Hispanic	Not Hispanic
Wayland Town Precinct 1	Wayland Town Precinct 1	250173661004005	25	8	0	15	0	0	0	2	0	25
Wayland Town Precinct 1	Wayland Town Precinct 1	250173662011000	105	90	1	3	0	0	0	11	11	94
Wayland Town Precinct 1	Wayland Town Precinct 1	250173662011001	8	3	0	0	0	1	0	4	0	8
Wayland Town Precinct 1	Wayland Town Precinct 1	250173662011002	47	32	2	3	0	0	0	10	1	46
Wayland Town Precinct 1	Wayland Town Precinct 1	250173662011003	43	22	2	16	2	0	0	1	0	43
Wayland Town Precinct 1	Wayland Town Precinct 1	250173662011004	74	60	2	12	0	0	0	0	0	74
Wayland Town Precinct 1	Wayland Town Precinct 1	250173662011005	86	74	1	5	0	0	0	6	4	82
Wayland Town Precinct 1	Wayland Town Precinct 1	250173662011006	20	11	0	0	0	0	0	9	0	20
Wayland Town Precinct 1	Wayland Town Precinct 1	250173662011007	164	139	5	18	0	0	0	2	1	163
Wayland Town Precinct 1	Wayland Town Precinct 1	250173662011008	24	18	0	0	2	0	0	4	5	19
Wayland Town Precinct 1	Wayland Town Precinct 1	250173662011009	0	0	0	0	0	0	0	0	0	0
Wayland Town Precinct 1	Wayland Town Precinct 1	250173662011010	0	0	0	0	0	0	0	0	0	0
Wayland Town Precinct 1	Wayland Town Precinct 1	250173662011011	76	70	2	3	0	0	0	1	2	74
Wayland Town Precinct 1	Wayland Town Precinct 1	250173662011012	225	171	0	44	0	0	0	10	7	218
Wayland Town Precinct 1	Wayland Town Precinct 1	250173662011013	40	31	0	7	2	0	0	0	2	38
Wayland Town Precinct 1	Wayland Town Precinct 1	250173662011014	46	36	0	7	0	0	0	3	0	46
Wayland Town Precinct 1	Wayland Town Precinct 1	250173662011015	36	21	0	6	0	0	0	9	0	36
Wayland Town Precinct 1	Wayland Town Precinct 1	250173662011016	199	162	0	8	3	0	0	26	15	184
Wayland Town Precinct 1	Wayland Town Precinct 1	250173662011017	19	7	0	8	3	0	0	1	1	18
Wayland Town Precinct 1	Wayland Town Precinct 1	250173662011018	110	85	0	17	2	0	0	6	0	110
Wayland Town Precinct 1	Wayland Town Precinct 1	250173662011019	311	266	0	28	0	0	0	17	6	305
Wayland Town Precinct 1	Wayland Town Precinct 1	250173662011020	130	96	0	25	0	0	0	9	4	126
Wayland Town Precinct 1	Wayland Town Precinct 1	250173662011021	33	32	0	1	0	0	0	0	3	30
Wayland Town Precinct 1	Wayland Town Precinct 1	250173662011022	0	0	0	0	0	0	0	0	0	0
Wayland Town Precinct 1	Wayland Town Precinct 1	250173662011023	97	76	2	16	0	0	0	3	0	97
Wayland Town Precinct 1	Wayland Town Precinct 1	250173662011024	0	0	0	0	0	0	0	0	0	0
Wayland Town Precinct 1	Wayland Town Precinct 1	250173662011025	0	0	0	0	0	0	0	0	0	0
Wayland Town Precinct 1	Wayland Town Precinct 1	250173662011026	226	182	0	31	0	0	0	13	4	222
Wayland Town Precinct 1	Wayland Town Precinct 1	250173662011030	74	66	1	1	2	0	0	4	4	70
Wayland Town Precinct 1	Wayland Town Precinct 1	250173662011031	55	49	0	3	0	0	0	3	0	55
Wayland Town Precinct 1	Wayland Town Precinct 1	250173662012014	52	48	0	2	0	0	0	2	0	52
Wayland Town Precinct 1	Wayland Town Precinct 1	250173662012015	9	4	0	3	1	0	0	1	0	9
Wayland Town Precinct 1	Wayland Town Precinct 1	250173662012009	432	314	4	64	12	0	1	37	43	389
Wayland Town Precinct 1	Wayland Town Precinct 1	250173662021010	16	6	0	8	0	0	0	2	0	16
Wayland Town Precinct 1	Wayland Town Precinct 1	250173662021011	38	18	0	2	0	0	1	17	13	25
Wayland Town Precinct 1	Wayland Town Precinct 1	250173662021012	12	8	0	2	0	0	0	2	0	12
Wayland Town Precinct 1	Wayland Town Precinct 1	250173662021013	13	2	0	8	0	1	0	2	2	11
Wayland Town Precinct 1	Wayland Town Precinct 1	250173662021014	36	22	0	14	0	0	0	0	0	36
Wayland Town Precinct 1	Wayland Town Precinct 1	250173662021015	0	0	0	0	0	0	0	0	0	0
Wayland Town Precinct 1	Wayland Town Precinct 1	250173662021016	29	24	0	4	0	0	0	1	1	28
Wayland Town Precinct 1	Wayland Town Precinct 1	250173662021017	11	6	3	0	0	0	0	2	0	11
Wayland Town Precinct 1	Wayland Town Precinct 1	250173662021018	9	4	0	2	0	0	0	3	1	8
Wayland Town Precinct 1	Wayland Town Precinct 1	250173662021019	0	0	0	0	0	0	0	0	0	0
Wayland Town Precinct 1	Wayland Town Precinct 1	250173662021020	0	0	0	0	0	0	0	0	0	0

Wayland 2020

New VTD	Old VTD	Block ID	TotalPop	WHITE	BLACK	ASIAN	Other	NHPI	AIAN	Pop2Race	Hispanic	Not Hispanic	
Wayland Town Precinct 1	Wayland Town Precinct 1	250173662021021	0	0	0	0	0	0	0	0	0	0	
Wayland Town Precinct 1	Wayland Town Precinct 1	250173662021022	84	71	2	8	2	0	0	1	5	79	
Wayland Town Precinct 1	Wayland Town Precinct 1	250173662021023	0	0	0	0	0	0	0	0	0	0	
Wayland Town Precinct 1	Wayland Town Precinct 1	250173662021024	97	86	0	4	0	0	0	7	3	94	
Wayland Town Precinct 1	Wayland Town Precinct 1	250173662021025	42	30	0	9	1	0	0	2	3	39	
Wayland Town Precinct 1	Wayland Town Precinct 1	250173662021026	0	0	0	0	0	0	0	0	0	0	
Wayland Town Precinct 1	Wayland Town Precinct 1	250173662021027	24	12	1	6	0	2	0	3	4	20	
Wayland Town Precinct 1	Wayland Town Precinct 1	250173662021029	21	9	0	1	1	1	0	9	9	12	
Wayland Town Precinct 1	Wayland Town Precinct 1	250173662021030	0	0	0	0	0	0	0	0	0	0	
Wayland Town Precinct 1	Wayland Town Precinct 1	250173662021031	0	0	0	0	0	0	0	0	0	0	
Wayland Town Precinct 1	Wayland Town Precinct 1	250173662021032	15	10	0	0	0	0	0	5	2	13	
Wayland Town Precinct 1	Wayland Town Precinct 1	250173662021034	0	0	0	0	0	0	0	0	0	0	
Wayland Town Precinct 1	Wayland Town Precinct 1	250173662021035	0	0	0	0	0	0	0	0	0	0	
Wayland Town Precinct 1	Wayland Town Precinct 1	250173662021036	0	0	0	0	0	0	0	0	0	0	
Wayland Town Precinct 1	Wayland Town Precinct 1	250173662021038	60	46	0	11	2	0	0	1	4	56	
Wayland Town Precinct 1	Wayland Town Precinct 1	250173662021039	34	24	0	0	0	0	0	10	2	32	
Wayland Town Precinct 1	Wayland Town Precinct 1	250173662021040	88	79	0	3	0	0	0	6	2	86	
Wayland Town Precinct 1	Wayland Town Precinct 1	250173662021041	0	0	0	0	0	0	0	0	0	0	
Wayland Town Precinct 1	Wayland Town Precinct 1	250173662021042	0	0	0	0	0	0	0	0	0	0	
<b>Wayland Town Precinct 1 Total</b>			<b>63</b>	<b>3,395</b>	<b>2,630</b>	<b>28</b>	<b>428</b>	<b>35</b>	<b>5</b>	<b>2</b>	<b>267</b>	<b>164</b>	<b>3,231</b>
Wayland Town Precinct 2	Wayland Town Precinct 2	250173661003000	76	52	0	13	0	0	0	11	5	71	
Wayland Town Precinct 2	Wayland Town Precinct 2	250173661003001	93	83	3	5	0	0	0	2	3	90	
Wayland Town Precinct 2	Wayland Town Precinct 2	250173661003002	36	26	0	8	0	0	0	2	0	36	
Wayland Town Precinct 2	Wayland Town Precinct 2	250173661003003	22	16	0	0	2	0	0	4	0	22	
Wayland Town Precinct 2	Wayland Town Precinct 2	250173661003004	45	35	1	9	0	0	0	0	0	45	
Wayland Town Precinct 2	Wayland Town Precinct 2	250173661003005	38	18	0	20	0	0	0	0	0	38	
Wayland Town Precinct 2	Wayland Town Precinct 2	250173661003006	61	60	0	0	1	0	0	0	1	60	
Wayland Town Precinct 2	Wayland Town Precinct 2	250173661003007	214	183	0	24	0	0	0	7	1	213	
Wayland Town Precinct 2	Wayland Town Precinct 2	250173661003008	41	35	0	2	2	0	0	2	7	34	
Wayland Town Precinct 2	Wayland Town Precinct 2	250173661003009	58	50	0	4	0	0	0	4	2	56	
Wayland Town Precinct 2	Wayland Town Precinct 2	250173661003010	35	25	0	7	0	0	0	3	1	34	
Wayland Town Precinct 2	Wayland Town Precinct 2	250173661003011	36	28	1	4	3	0	0	0	3	33	
Wayland Town Precinct 2	Wayland Town Precinct 2	250173661003012	0	0	0	0	0	0	0	0	0	0	
Wayland Town Precinct 2	Wayland Town Precinct 2	250173661003013	37	28	0	1	2	0	0	6	0	37	
Wayland Town Precinct 2	Wayland Town Precinct 2	250173661003014	67	36	4	17	5	0	0	5	5	62	
Wayland Town Precinct 2	Wayland Town Precinct 2	250173661004000	90	80	0	8	1	0	0	1	2	88	
Wayland Town Precinct 2	Wayland Town Precinct 2	250173661004001	46	18	0	23	0	0	0	5	5	41	
Wayland Town Precinct 2	Wayland Town Precinct 2	250173661004002	21	11	3	0	0	0	0	7	4	17	
Wayland Town Precinct 2	Wayland Town Precinct 2	250173661004003	20	14	0	4	0	0	0	2	0	20	
Wayland Town Precinct 2	Wayland Town Precinct 2	250173661004004	0	0	0	0	0	0	0	0	0	0	
Wayland Town Precinct 2	Wayland Town Precinct 2	250173661004006	51	33	0	14	0	0	0	4	0	51	
Wayland Town Precinct 2	Wayland Town Precinct 2	250173661004007	41	18	0	19	0	0	0	4	1	40	
Wayland Town Precinct 2	Wayland Town Precinct 2	250173661004008	29	26	0	2	0	0	0	1	0	29	

Wayland 2020

New VTD	Old VTD	Block ID	TotalPop	WHITE	BLACK	ASIAN	Other	NHPI	AIAN	Pop2Race	Hispanic	Not Hispanic	
Wayland Town Precinct 2	Wayland Town Precinct 2	250173661004009	36	27	2	3	1	0	0	3	1	35	
Wayland Town Precinct 2	Wayland Town Precinct 2	250173661004010	73	60	0	10	0	0	0	3	0	73	
Wayland Town Precinct 2	Wayland Town Precinct 2	250173661004011	8	7	0	1	0	0	0	0	0	8	
Wayland Town Precinct 2	Wayland Town Precinct 2	250173661004012	9	2	1	0	0	0	0	6	5	4	
Wayland Town Precinct 2	Wayland Town Precinct 2	250173661004013	167	142	1	16	1	0	0	7	6	161	
Wayland Town Precinct 2	Wayland Town Precinct 2	250173661004014	28	23	2	0	0	0	0	3	0	28	
Wayland Town Precinct 2	Wayland Town Precinct 2	250173661004015	30	18	0	7	1	0	0	4	1	29	
Wayland Town Precinct 2	Wayland Town Precinct 2	250173661004016	37	30	1	2	0	0	0	4	0	37	
Wayland Town Precinct 2	Wayland Town Precinct 2	250173661004017	19	12	0	0	1	0	0	6	2	17	
Wayland Town Precinct 2	Wayland Town Precinct 2	250173661004018	0	0	0	0	0	0	0	0	0	0	
Wayland Town Precinct 2	Wayland Town Precinct 2	250173661004019	50	33	0	17	0	0	0	0	0	50	
Wayland Town Precinct 2	Wayland Town Precinct 2	250173661004020	101	62	5	31	1	0	0	2	4	97	
Wayland Town Precinct 2	Wayland Town Precinct 2	250173661004021	29	29	0	0	0	0	0	0	0	29	
Wayland Town Precinct 2	Wayland Town Precinct 2	250173661004022	38	31	2	4	1	0	0	0	1	37	
Wayland Town Precinct 2	Wayland Town Precinct 2	250173661004023	43	35	1	0	1	0	0	6	3	40	
Wayland Town Precinct 2	Wayland Town Precinct 2	250173661005000	333	290	2	32	0	0	0	9	10	323	
Wayland Town Precinct 2	Wayland Town Precinct 3	250173661005001	0	0	0	0	0	0	0	0	0	0	
Wayland Town Precinct 2	Wayland Town Precinct 2	250173661005002	77	75	0	1	1	0	0	0	3	74	
Wayland Town Precinct 2	Wayland Town Precinct 2	250173661005003	69	47	0	13	0	0	0	9	1	68	
Wayland Town Precinct 2	Wayland Town Precinct 2	250173661005004	65	59	0	0	0	0	0	6	2	63	
Wayland Town Precinct 2	Wayland Town Precinct 2	250173661005005	56	43	0	5	0	0	0	8	7	49	
Wayland Town Precinct 2	Wayland Town Precinct 2	250173661005006	20	18	1	0	0	0	0	1	0	20	
Wayland Town Precinct 2	Wayland Town Precinct 3	250173661005007	0	0	0	0	0	0	0	0	0	0	
Wayland Town Precinct 2	Wayland Town Precinct 3	250173661005008	0	0	0	0	0	0	0	0	0	0	
Wayland Town Precinct 2	Wayland Town Precinct 3	250173661005009	0	0	0	0	0	0	0	0	0	0	
Wayland Town Precinct 2	Wayland Town Precinct 2	250173661005012	31	21	0	4	2	0	0	4	2	29	
Wayland Town Precinct 2	Wayland Town Precinct 2	250173661005018	68	58	0	4	0	0	0	6	2	66	
Wayland Town Precinct 2	Wayland Town Precinct 2	250173661005019	53	45	1	4	2	0	0	1	0	53	
Wayland Town Precinct 2	Wayland Town Precinct 2	250173661005020	40	33	0	0	3	0	0	4	2	38	
Wayland Town Precinct 2	Wayland Town Precinct 3	250173661005021	0	0	0	0	0	0	0	0	0	0	
Wayland Town Precinct 2	Wayland Town Precinct 1	250173662021045	96	68	1	27	0	0	0	0	2	94	
Wayland Town Precinct 2	Wayland Town Precinct 2	250173662021046	83	67	2	8	0	0	0	6	1	82	
Wayland Town Precinct 2	Wayland Town Precinct 2	250173662021047	34	26	0	8	0	0	0	0	0	34	
Wayland Town Precinct 2	Wayland Town Precinct 2	250173662022001	26	17	0	5	1	0	0	3	1	25	
Wayland Town Precinct 2	Wayland Town Precinct 2	250173662022002	80	61	0	11	0	0	1	7	3	77	
Wayland Town Precinct 2	Wayland Town Precinct 2	250173662022003	306	230	0	58	4	0	0	14	4	302	
Wayland Town Precinct 2	Wayland Town Precinct 2	250173662022004	49	44	0	0	0	0	0	5	5	44	
Wayland Town Precinct 2	Wayland Town Precinct 2	250173662022005	32	13	0	13	0	0	0	6	3	29	
Wayland Town Precinct 2	Wayland Town Precinct 2	250173662022006	33	27	0	5	0	0	0	1	0	33	
Wayland Town Precinct 2	Wayland Town Precinct 2	250173662022007	67	46	0	14	0	0	0	7	4	63	
Wayland Town Precinct 2	Wayland Town Precinct 2	250173662022008	69	51	0	5	2	0	0	11	5	64	
<b>Wayland Town Precinct 2</b>			<b>64</b>	<b>3,512</b>	<b>2,725</b>	<b>34</b>	<b>492</b>	<b>38</b>	<b>0</b>	<b>1</b>	<b>222</b>	<b>120</b>	<b>3,392</b>
Wayland Town Precinct 3	Wayland Town Precinct 3	250173661001000	29	22	1	0	1	0	0	5	3	26	

Wayland 2020

New VTD	Old VTD	Block ID	TotalPop	WHITE	BLACK	ASIAN	Other	NHPI	AIAN	Pop2Race	Hispanic	Not Hispanic
Wayland Town Precinct 3	Wayland Town Precinct 3	250173661001001	98	80	0	15	0	0	0	3	3	95
Wayland Town Precinct 3	Wayland Town Precinct 3	250173661001002	172	119	4	43	2	0	0	4	3	169
Wayland Town Precinct 3	Wayland Town Precinct 3	250173661001003	183	119	0	61	0	0	0	3	0	183
Wayland Town Precinct 3	Wayland Town Precinct 3	250173661001004	66	33	3	22	4	0	0	4	5	61
Wayland Town Precinct 3	Wayland Town Precinct 3	250173661001005	33	19	0	8	1	0	0	5	9	24
Wayland Town Precinct 3	Wayland Town Precinct 3	250173661001006	63	57	0	6	0	0	0	0	1	62
Wayland Town Precinct 3	Wayland Town Precinct 3	250173661001007	118	113	0	3	0	0	0	2	2	116
Wayland Town Precinct 3	Wayland Town Precinct 3	250173661001008	0	0	0	0	0	0	0	0	0	0
Wayland Town Precinct 3	Wayland Town Precinct 3	250173661001009	0	0	0	0	0	0	0	0	0	0
Wayland Town Precinct 3	Wayland Town Precinct 3	250173661001010	0	0	0	0	0	0	0	0	0	0
Wayland Town Precinct 3	Wayland Town Precinct 3	250173661001011	41	13	1	25	0	0	0	2	1	40
Wayland Town Precinct 3	Wayland Town Precinct 3	250173661001012	23	6	3	6	1	0	0	7	3	20
Wayland Town Precinct 3	Wayland Town Precinct 3	250173661001013	20	5	1	14	0	0	0	0	0	20
Wayland Town Precinct 3	Wayland Town Precinct 3	250173661002000	29	25	0	3	0	0	0	1	0	29
Wayland Town Precinct 3	Wayland Town Precinct 3	250173661002001	204	155	0	21	2	0	0	26	11	193
Wayland Town Precinct 3	Wayland Town Precinct 3	250173661002002	43	29	0	9	1	0	0	4	3	40
Wayland Town Precinct 3	Wayland Town Precinct 3	250173661002003	64	46	0	8	0	0	0	10	4	60
Wayland Town Precinct 3	Wayland Town Precinct 3	250173661002004	101	68	2	25	0	0	0	6	3	98
Wayland Town Precinct 3	Wayland Town Precinct 3	250173661002005	292	206	13	52	0	0	0	21	8	284
Wayland Town Precinct 3	Wayland Town Precinct 3	250173661002006	129	95	3	19	7	0	0	5	9	120
Wayland Town Precinct 3	Wayland Town Precinct 3	250173661002007	0	0	0	0	0	0	0	0	0	0
Wayland Town Precinct 3	Wayland Town Precinct 3	250173661002008	135	80	0	47	5	0	0	3	4	131
Wayland Town Precinct 3	Wayland Town Precinct 3	250173661002009	0	0	0	0	0	0	0	0	0	0
Wayland Town Precinct 3	Wayland Town Precinct 3	250173661002010	74	47	3	16	3	0	0	5	5	69
Wayland Town Precinct 3	Wayland Town Precinct 3	250173661002011	18	10	0	2	0	0	0	6	4	14
Wayland Town Precinct 3	Wayland Town Precinct 3	250173661002012	27	18	0	0	0	0	0	9	9	18
Wayland Town Precinct 3	Wayland Town Precinct 3	250173661002013	33	17	0	8	1	0	0	7	4	29
Wayland Town Precinct 3	Wayland Town Precinct 3	250173661002014	19	17	1	0	0	0	0	1	0	19
Wayland Town Precinct 3	Wayland Town Precinct 3	250173661005010	19	16	0	1	1	0	0	1	1	18
Wayland Town Precinct 3	Wayland Town Precinct 3	250173661005011	0	0	0	0	0	0	0	0	0	0
Wayland Town Precinct 3	Wayland Town Precinct 3	250173661005013	44	33	0	5	1	0	0	5	5	39
Wayland Town Precinct 3	Wayland Town Precinct 3	250173661005014	53	48	0	0	3	0	0	2	3	50
Wayland Town Precinct 3	Wayland Town Precinct 3	250173661005015	58	52	0	2	1	0	0	3	5	53
Wayland Town Precinct 3	Wayland Town Precinct 3	250173661005016	93	65	4	21	1	0	0	2	1	92
Wayland Town Precinct 3	Wayland Town Precinct 3	250173661005017	9	6	0	3	0	0	0	0	0	9
Wayland Town Precinct 3	Wayland Town Precinct 3	250173661005022	0	0	0	0	0	0	0	0	0	0
Wayland Town Precinct 3	Wayland Town Precinct 3	250173661005023	0	0	0	0	0	0	0	0	0	0
Wayland Town Precinct 3	Wayland Town Precinct 3	250173661005024	0	0	0	0	0	0	0	0	0	0
Wayland Town Precinct 3	Wayland Town Precinct 3	250173662022009	253	210	1	31	4	0	0	7	4	249
Wayland Town Precinct 3	Wayland Town Precinct 3	250173662022010	49	30	0	12	2	0	0	5	0	49
Wayland Town Precinct 3	Wayland Town Precinct 4	250173662022011	141	119	0	6	1	0	0	15	1	140
Wayland Town Precinct 3	Wayland Town Precinct 4	250173662022012	0	0	0	0	0	0	0	0	0	0
Wayland Town Precinct 3	Wayland Town Precinct 4	250173662022013	18	12	0	0	0	0	0	6	4	14
Wayland Town Precinct 3	Wayland Town Precinct 3	250173662022014	320	293	2	22	0	0	0	3	1	319

Wayland 2020

New VTD	Old VTD	Block ID	TotalPop	WHITE	BLACK	ASIAN	Other	NHPI	AIAN	Pop2Race	Hispanic	Not Hispanic
Wayland Town Precinct 3	Wayland Town Precinct 3	250173662022015	24	22	0	0	0	0	0	2	1	23
Wayland Town Precinct 3	Wayland Town Precinct 3	250173662022016	46	39	0	6	0	0	0	1	0	46
Wayland Town Precinct 3	Wayland Town Precinct 3	250173662022017	67	55	0	9	0	0	0	3	4	63
Wayland Town Precinct 3	Wayland Town Precinct 3	250173662022018	55	41	0	4	0	0	0	10	3	52
Wayland Town Precinct 3	Wayland Town Precinct 3	250173662022019	68	56	1	3	0	0	1	7	3	65
Wayland Town Precinct 3	Wayland Town Precinct 3	250173662022020	53	36	1	10	0	0	0	6	0	53
Wayland Town Precinct 3	Wayland Town Precinct 3	250173662022021	44	43	0	0	1	0	0	0	0	44
Wayland Town Precinct 3	Wayland Town Precinct 3	250173662022022	10	4	0	5	0	0	0	1	0	10
Wayland Town Precinct 3	Wayland Town Precinct 3	250173662022023	0	0	0	0	0	0	0	0	0	0
Wayland Town Precinct 3	Wayland Town Precinct 3	250173662022024	77	46	2	28	0	0	0	1	0	77
<b>Wayland Town Precinct 3 Total</b>			<b>55</b>	<b>3,515</b>	<b>46</b>	<b>581</b>	<b>43</b>	<b>0</b>	<b>1</b>	<b>219</b>	<b>130</b>	<b>3,385</b>
Wayland Town Precinct 4	Wayland Town Precinct 4	250173662011027	36	23	0	5	3	0	0	5	4	32
Wayland Town Precinct 4	Wayland Town Precinct 4	250173662011028	304	265	0	22	0	0	0	17	8	296
Wayland Town Precinct 4	Wayland Town Precinct 4	250173662011029	132	114	0	12	0	0	0	6	1	131
Wayland Town Precinct 4	Wayland Town Precinct 4	250173662012000	197	173	0	15	0	0	0	9	3	194
Wayland Town Precinct 4	Wayland Town Precinct 4	250173662012001	34	19	0	0	0	0	0	15	1	33
Wayland Town Precinct 4	Wayland Town Precinct 4	250173662012002	33	27	0	3	0	0	0	3	2	31
Wayland Town Precinct 4	Wayland Town Precinct 4	250173662012003	55	42	1	3	0	0	0	9	8	47
Wayland Town Precinct 4	Wayland Town Precinct 4	250173662012004	33	31	0	0	2	0	0	0	8	25
Wayland Town Precinct 4	Wayland Town Precinct 4	250173662012005	78	70	0	2	0	0	0	6	2	76
Wayland Town Precinct 4	Wayland Town Precinct 4	250173662012006	85	70	0	7	5	0	0	3	4	81
Wayland Town Precinct 4	Wayland Town Precinct 4	250173662012007	79	65	2	1	2	0	0	9	7	72
Wayland Town Precinct 4	Wayland Town Precinct 4	250173662012008	23	11	0	9	0	0	0	3	2	21
Wayland Town Precinct 4	Wayland Town Precinct 4	250173662012009	31	17	0	7	0	0	0	7	0	31
Wayland Town Precinct 4	Wayland Town Precinct 4	250173662012010	100	85	1	11	0	0	0	3	0	100
Wayland Town Precinct 4	Wayland Town Precinct 4	250173662012011	36	34	0	0	0	0	0	2	0	36
Wayland Town Precinct 4	Wayland Town Precinct 4	250173662012012	35	35	0	0	0	0	0	0	1	34
Wayland Town Precinct 4	Wayland Town Precinct 4	250173662012013	75	70	0	1	0	0	1	3	0	75
Wayland Town Precinct 4	Wayland Town Precinct 4	250173662012016	47	41	0	3	2	0	0	1	1	46
Wayland Town Precinct 4	Wayland Town Precinct 4	250173662012017	28	17	1	2	0	0	0	8	3	25
Wayland Town Precinct 4	Wayland Town Precinct 4	250173662021000	45	27	0	10	0	0	0	8	6	39
Wayland Town Precinct 4	Wayland Town Precinct 4	250173662021001	68	59	3	1	0	0	0	5	5	63
Wayland Town Precinct 4	Wayland Town Precinct 4	250173662021002	366	315	2	40	1	0	0	8	8	358
Wayland Town Precinct 4	Wayland Town Precinct 4	250173662021003	12	4	0	4	2	0	0	2	0	12
Wayland Town Precinct 4	Wayland Town Precinct 4	250173662021004	14	12	0	0	2	0	0	0	0	14
Wayland Town Precinct 4	Wayland Town Precinct 4	250173662021005	46	42	0	1	1	1	0	1	1	45
Wayland Town Precinct 4	Wayland Town Precinct 4	250173662021006	51	35	0	8	0	0	0	8	0	51
Wayland Town Precinct 4	Wayland Town Precinct 4	250173662021007	73	66	0	5	0	0	0	2	0	73
Wayland Town Precinct 4	Wayland Town Precinct 4	250173662021008	25	14	0	9	0	0	0	2	0	25
Wayland Town Precinct 4	Wayland Town Precinct 4	250173662021043	269	233	1	23	0	0	0	12	0	269
Wayland Town Precinct 4	Wayland Town Precinct 4	250173662021044	27	19	0	2	2	0	0	4	3	24
Wayland Town Precinct 4	Wayland Town Precinct 4	250173662022000	85	56	1	24	0	0	0	4	1	84
Wayland Town Precinct 4	Wayland Town Precinct 4	250173662023000	52	42	0	1	1	0	1	7	5	47

Wayland 2020

New VTD	Old VTD	Block ID	TotalPop	WHITE	BLACK	ASIAN	Other	NHPI	AIAN	Pop2Rare	Hispanic	Not Hispanic	
Wayland Town Precinct 4	Wayland Town Precinct 4	250173662023001	76	64	0	7	1	0	1	3	3	73	
Wayland Town Precinct 4	Wayland Town Precinct 4	250173662023002	47	30	0	10	4	0	0	3	6	41	
Wayland Town Precinct 4	Wayland Town Precinct 4	250173662023003	218	175	0	38	2	0	0	3	2	216	
Wayland Town Precinct 4	Wayland Town Precinct 4	250173662023004	39	14	0	14	2	0	0	9	10	29	
Wayland Town Precinct 4	Wayland Town Precinct 4	250173662023005	18	8	2	0	0	0	0	8	0	18	
Wayland Town Precinct 4	Wayland Town Precinct 4	250173662023006	21	11	2	4	0	0	0	4	0	21	
Wayland Town Precinct 4	Wayland Town Precinct 4	250173662023007	168	120	0	32	0	0	3	13	0	168	
Wayland Town Precinct 4	Wayland Town Precinct 4	250173662023008	27	23	0	0	2	0	0	2	1	26	
Wayland Town Precinct 4	Wayland Town Precinct 4	250173662023009	42	39	0	0	2	0	1	0	3	39	
Wayland Town Precinct 4	Wayland Town Precinct 4	250173662023010	52	34	0	15	1	0	0	2	3	49	
Wayland Town Precinct 4	Wayland Town Precinct 4	250173662023011	85	73	0	7	0	0	0	5	4	81	
Wayland Town Precinct 4	Wayland Town Precinct 4	250173662023012	12	9	2	0	1	0	0	0	1	11	
Wayland Town Precinct 4	Wayland Town Precinct 4	250173662023013	55	29	0	21	1	0	0	4	2	53	
Wayland Town Precinct 4	Wayland Town Precinct 4	250173662023014	36	25	1	7	0	0	0	3	2	34	
Wayland Town Precinct 4	Wayland Town Precinct 4	250173662023015	32	19	3	3	2	0	0	5	6	26	
Wayland Town Precinct 4	Wayland Town Precinct 4	250173662023016	19	14	0	1	0	0	0	4	0	19	
<b>Wayland Town Precinct 4 Total</b>			<b>48</b>	<b>3,521</b>	<b>2,820</b>	<b>22</b>	<b>390</b>	<b>41</b>	<b>1</b>	<b>7</b>	<b>240</b>	<b>127</b>	<b>3,394</b>
<b>Grand Total</b>			<b>230</b>	<b>13,943</b>	<b>10,800</b>	<b>130</b>	<b>1,891</b>	<b>157</b>	<b>6</b>	<b>11</b>	<b>948</b>	<b>541</b>	<b>13,402</b>

★ ★ ★ ★ ★ ★ ★ ★ ★ ★

You are required to serve this Warrant by posting copies thereof, attested by you, at the Town Building, at the Public Library in Wayland Center, at the Cochituate Fire Station or the Cochituate Post Office, and at the Happy Hollow School, and by mailing or delivering a copy thereof addressed to each residence in the Town fourteen (14) days, at least, before the time appointed for the Special Town Meeting.

Hereof, fail not and deliver this Warrant with your return thereon to the Town Clerk on or before September 17, 2021.

Given under our hands and seals this 17<sup>th</sup> day of September, 2021.

Thomas J. Fay, Chair  
Cherry C. Karlson, Vice Chair  
Adam G. Gutbezahl  
Carol B. Martin  
David V. Watkins  
**Selectmen of the Town of Wayland**



Town of Wayland  
Board of Selectmen  
41 Cochituate Road  
Wayland, MA 01778  
[www.wayland.ma.us](http://www.wayland.ma.us)

PRST-STD  
U.S. Postage  
PAID  
Permit No. 16  
Wayland MA

**POSTAL PATRON WAYLAND, MA 01778**



## **Wayland Special Town Meeting**

Sunday, October 3, 2021

12:30 p.m.

Wayland High School Stadium

264 Old Connecticut Path

Wayland, MA 01778



Please visit the Town's website <https://www.wayland.ma.us/town-meeting/STM2021> for the ADA notice & ADA compliance coordinator contact information, Be Prepared Statement, COVID19 & Field Protocols, The Moderator's Rules and Regulations, How to Vote Electronically, additional information on the articles, possible appendices and any other additional Town Meeting Materials.

**To any of the Constables of the Town of Wayland, Greetings:** In the name of the Commonwealth of Massachusetts, you are hereby required to notify all residents of the Town of Wayland who shall be qualified to vote in accordance with the provisions of Massachusetts General Laws, Chapter 51, Section 1, to meet at the High School Stadium on:

SUNDAY, OCTOBER 3, 2021 AT 12:30 P.M.

to act on the following Articles:

---

**Article 1. Town Code § 95.1 Moratorium on Synthetic/Artificial Turf**

*Proposed by: Petitioners*

To determine whether the Town will vote to:

Add a new Chapter 95 to the Town Bylaws entitled, "Moratorium on Synthetic/Artificial Turf" as shown below prohibiting the construction of synthetic or artificial turf on Town land for three years. This bylaw will not affect the use or maintenance of the existing synthetic turf field at the high school.

**Town Code § 95.1 Moratorium on Synthetic/Artificial Turf**

**Purpose:** The use of synthetic/artificial turf on athletic playing fields entails myriad public health and safety, environmental, and climate concerns. Wayland must carefully evaluate whether such use, even where privately funded, is consonant with Wayland's athletic needs, the health and safety of its children, residents in general, and the environment, and the Climate Emergency Resolution adopted by town meeting in May 2021.

This moratorium allows the Town the opportunity (a) to examine the extent to which synthetic/artificial turf is injurious to public health and safety, the environment and the climate compared to natural grass solutions, and (b) to determine if natural grass solutions based on the use of the latest techniques for grass field construction and organic maintenance create viable alternatives for Wayland.

"Synthetic/artificial turf" means any of various artificial, synthetic or partially synthetic carpetlike materials made to resemble grass, including the infill and liners, used as a surface for athletics, sports or other recreational activities.

The Town of Wayland shall neither authorize nor allow the installation of synthetic/artificial turf on any real estate owned by the Town, for a period of three years from the effective date of this moratorium

This restriction shall not apply to the use or maintenance of the synthetic/artificial turf field at Wayland High School installed prior to the adoption of this bylaw amendment.

**Quantum of Vote:** Majority – see General Laws Chapter 39, Section 16, and General Laws Chapter 40, Section 21.

For more information about this article, contact Paul Dale, Lead Petitioner at 617-794-0851

In Town Counsel's opinion, the proposed bylaw amendment is not repugnant to Massachusetts or federal law

---

**Article 2. Grass Field at Loker Conservation & Recreation Area Design Fees**

*Proposed by: Board of Selectmen, Recreation Commission*

*Estimated Cost: \$125,000*

To determine whether the Town will vote to:

a) appropriate a sum of money, not to exceed \$125,000, to be expended under the direction of the Wayland Board of Selectmen for the design, permitting, and engineering for the development of a multi-purpose, rectangular, natural grass athletic field at the Loker Recreation site, including, but not limited to, lighting, drainage, landscaping, recreational amenities, irrigation system and any and all other costs incidental or related thereto; and

b) determine whether said appropriation should be provided by taxation, transfer from un-appropriated funds, transfer from available funds already appropriated for other purposes, by borrowing under Massachusetts General Laws Chapter 44 or other enabling authority, or otherwise. (If borrowing, the article should include standard authorization language for Treasurer and to apply bond premium.)

c) authorize the Town Treasurer, with the approval of the Board of Selectmen, to borrow up to said sum in accordance with Massachusetts General Laws Chapter 44, section 7 and 8 and any other enabling authority, and issue bonds or notes of the Town therefor; and

d) authorize any premium received by the Town upon the sale of any bonds or notes approved by this vote, less any such premium applied to the payment of the costs of issuance of such bonds or notes, may be applied to the payment of costs approved hereunder in accordance with Massachusetts General Laws Chapter 44, section 20, thereby reducing by a like amount the amount authorized to be borrowed to pay such costs.

**Quantum of Vote:** 2/3 vote if borrowing funds under General Laws, Chapter 44, Sections 7 and 8. Majority vote to appropriate funds pursuant to General Laws Chapter 40, Section 5.

For more information about this article, contact Louise Miller, Town Administrator at [lmiller@wayland.ma.us](mailto:lmiller@wayland.ma.us)

---

**Article 3. Feasibility Study for a Grass Field at 195/207 Main Street**

*Proposed by: Board of Selectmen, Recreation Commission*

*Estimated Cost: \$50,000*

To determine whether the Town will vote to:

a) appropriate a sum of money, not to exceed \$50,000, to be expended under the direction of the Board of Selectmen for a feasibility study for a multi-purpose, natural grass athletic playing field at 195 and 207 Main Street, Wayland, Massachusetts, including, but not limited to, lighting, drainage, landscaping, recreational amenities, irrigation, access and parking areas, and any and all other costs incidental or related thereto; and

b) determine whether such appropriation shall be provided by taxation, by transfer from unappropriated funds, by transfer of funds already appropriated for another purpose, by borrowing under Massachusetts General Laws Chapter 44 or other enabling authority. (If borrowing, the article should include standard authorization language for Treasurer and to apply bond premium.)

c) authorize the Town Treasurer, with the approval of the Board of Selectmen, to borrow up to said sum in accordance with Massachusetts General Laws Chapter 44, section 7 and 8 and any other enabling authority, and issue bonds or notes of the Town therefor; and

d) authorize any premium received by the Town upon the sale of any bonds or notes approved by this vote, less any such premium applied to the payment of the costs of issuance of such bonds or notes, may be applied to the payment of costs approved hereunder in accordance with Massachusetts General Laws Chapter 44, section 20, thereby reducing by a like amount the amount authorized to be borrowed to pay such costs.

**Quantum of Vote:** 2/3 vote if borrowing funds under General Laws, Chapter 44, Sections 7 and 8. Majority vote to appropriate funds pursuant to General Laws Chapter 40, Section 5.

For more information about this article, contact Louise Miller, Town Administrator at [lmiller@wayland.ma.us](mailto:lmiller@wayland.ma.us)

---

**Article 4. Feasibility Study for Review of Potential Third Site for a Grass Field**

*Proposed by: Board of Selectmen, Recreation Commission*

*Estimated Cost: \$50,000*

To determine whether the Town will vote to:

a) appropriate a sum of money, not to exceed \$50,000, to be expended under the direction of the Board of Selectmen for a feasibility study to investigate and identify a site for a multi-purpose, natural grass playing field in Wayland, Massachusetts, and those sites to be considered shall include, but not be limited to, Greenways, the Route 20 South Landfill, and Orchard Lane/Holiday Road, and

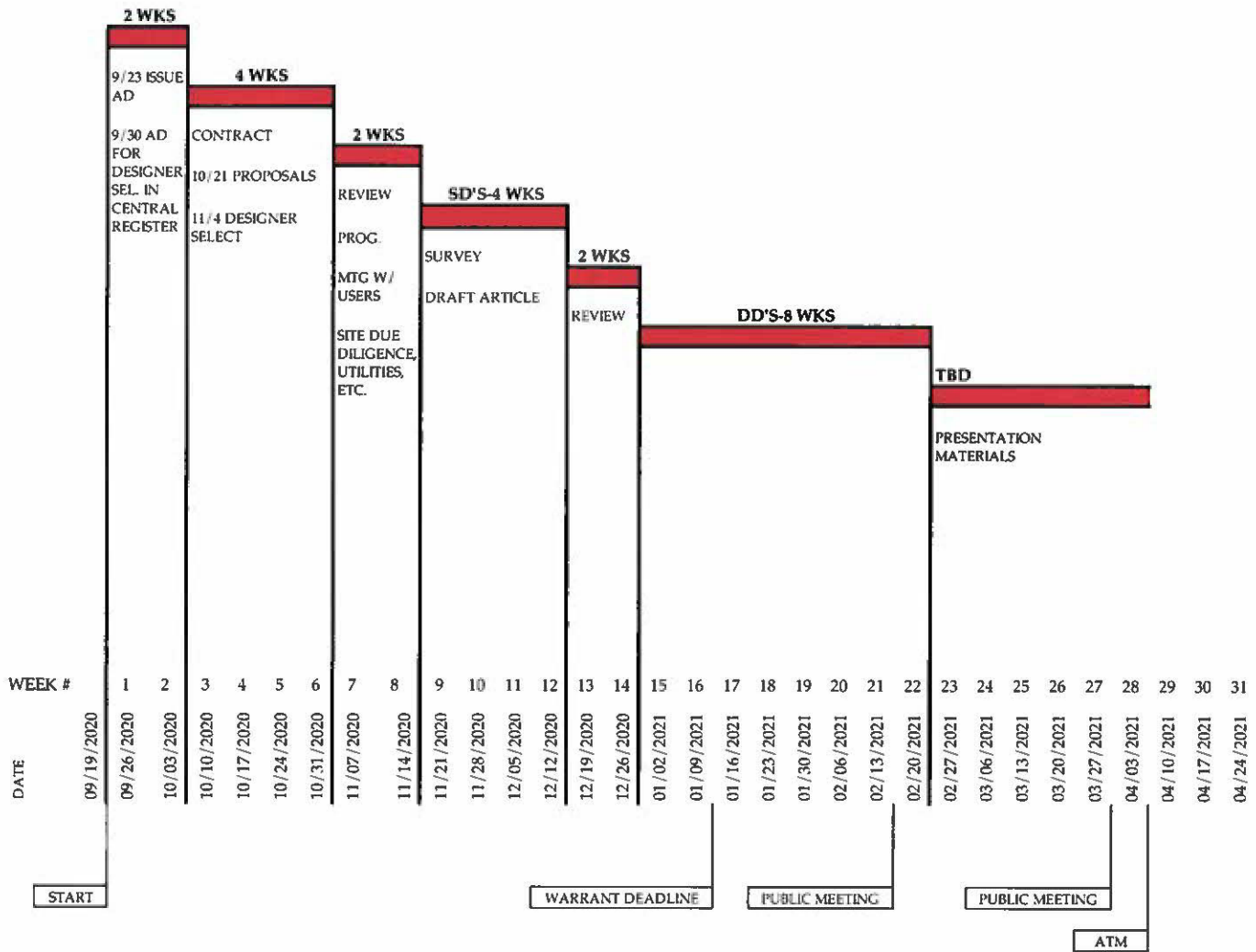
b) to determine whether such appropriation shall be provided by taxation, by transfer from unappropriated funds, by transfer of funds already appropriated for another purpose, by borrowing under Massachusetts General Laws Chapter 44 or other enabling authority, or otherwise. (If borrowing, the article should include standard authorization language for Treasurer and to apply bond premium.)

c) authorize the Town Treasurer, with the approval of the Board of Selectmen, to borrow up to said sum in accordance with Massachusetts General Laws Chapter 44, section 7 and 8 and any other enabling authority, and issue bonds or notes of the Town therefor; and

d) authorize any premium received by the Town upon the sale of any bonds or notes approved by this vote, less any such premium applied to the payment of the costs of issuance of such bonds or notes, may be applied to the payment of costs approved hereunder in accordance with Massachusetts General Laws Chapter 44, section 20, thereby reducing by a like amount the amount authorized to be borrowed to pay such costs.

**Quantum of Vote:** 2/3 vote if borrowing funds under General Laws, Chapter 44, Sections 7 and 8. Majority vote to appropriate funds pursuant to General Laws Chapter 40, Section 5.

For more information about this article, contact Louise Miller, Town Administrator at [lmiller@wayland.ma.us](mailto:lmiller@wayland.ma.us)



START

WARRANT DEADLINE

PUBLIC MEETING

PUBLIC MEETING

ATM