

ADDENDUM NO. 1

TO

CONTRACT DOCUMENTS

IMPROVEMENTS TO WAYLAND HIGH SCHOOL ATHLETIC FACILITIES Wayland, MA

IFB #19-1030

October 4, 2018

NOTICE TO BIDDERS

The attention of all bidders submitting proposals for “Improvements to Wayland High School Athletic Facilities” is called to the following Addenda to the specifications and plans. The items set forth herein, whether of omission, addition or substitution are to be included in, and form part of the specifications and plans of the above-named project for bids to be received as advertised.

PLEASE BE SURE TO ACKNOWLEDGE THIS ADDENDUM ON BID PRICING PAGE

The following clarifications, modifications, deletions and additions are hereby incorporated into and become part of the Contract Documents.

For reference and public record, see attachment, - Attendance List: Pre-Bid Site Walk, dated September 27, 2018

WRITTEN CHANGES AND CLARIFICATIONS TO SPECIFICATIONS

1. Specification Section 0011 13 – ADVERTISEMENT FOR BID:

Change in bid dates as follows:

Any questions about this IFB should be directed to Brandon Kunkel, at Weston & Sampson, 85 Devonshire Street, 3rd Floor, Boston, MA 02109, or by email to kunkelb@wseinc.com to be received no later than **Wednesday, 11:00 AM on October 10, 2018.**

Sealed bids for the contract will be received at the Facility Department, 2nd Floor, Wayland Town Building, 41 Cochituate Road on **Tuesday, October 16, 2018 at 2:00 PM.**

For clarification. The estimated cost of contract is **\$5,300,000.00**

2. Specification Section 12 40 00 – SITE FURNISHING, PART 2 - PRODUCTS:

A. Section 2.01 SPORTS EQUIPMENT, Item T, BASKETBAL BENCHES:

DELETE Model # L&L-L15-323 (2 total);

ADD Model # SOL-L12-234, Bench with 12 slats, 92×36×18 inches (2 total),
Model # SOL-L12-234-Ext, Extension Bench with 12 slats, 92×36×18 inches (2 total),
Model # SOL-L-SBR-180, Double sided rounded backrest, 71×6×13 inches (2 total)

B. Section 2.01 SPORTS EQUIPMENT

ADD: Item X. SOFTBALL FIELD BLEACHERS

The spectator bleachers at the softball field shall be Model #LU-0415AS with four (4) rows, 15'-0" length as manufactured by GT Grandstands, 2810 Sydney Road, Plant City, FL 33566, 866-550-5511, or approved equal. (2 total)

C. ADD Section 2.02 PICNIC TABLE – Standard and ADA-Compliant,

1. The Standard Picnic Table shall be Model #100 Series PL, S-2 surface mount, 6'-0" in length, "Walnut" recycled plastic as manufactured by Dumor, Inc., PO Box 142, Mifflintown, PA 017059, 800-598-4018, or approved equal. All steel members shall be coated with zinc-rich epoxy then finished with polyester powder coating. (1 total)
2. The ADA-Compliant Picnic Table shall be Model #100-68-1 PL, S-2 surface mount, 95" in length, "Walnut" recycled plastic as manufactured by Dumor, Inc., PO Box 142, Mifflintown, PA 017059, 800-598-4018, or approved equal. All steel members shall be coated with zinc-rich epoxy then finished with polyester powder coating. (1 total)

D. ADD Section 2.03 TREE GRATE

1. Tree grate shall be Model #6090L, Bond Street tree grate, 60"x60", tree grate in two sections. ½" maximum slot opening for pedestrian safety and ADA compliance. Cast from 100% recycled aluminum. Tree opening: 36"; Weight: Aluminum = 185 lb/85 kg; Finish: unfinished; Frame Model: 6000F, Finish: unfinished; as manufactured by IronSmith, 41-701 Corporate Way #3, Palm Desert, CA 92260, 800-338-4766, or approved equal.

QUESTIONS AND CLARIFICATIONS

Question 1: Can the length of the home bleacher be 138' (standard length for 6' steel spacing) instead of the 139' shown on the plans?

Response: Dimensions may vary slightly and as required by the approved manufacture's bleacher system and /or structural engineers' requirements. All dimensions will be reviewed and approved during the submittal process. The total seat count must be met, and MAAB / ADA requirements must be met.

Question 2: Is the walkway elevation at the visitor bleacher 48" or 49"?

Response: The walkway elevation at the visitor bleacher shall be 48-inch ht.

Question 3: Is the Field General Contractor responsible for the foundations/earthwork for the storage building?

Response: The field contractor is responsible for earthwork excavation, installation of foundations and concrete floor, placing and compacting backfill materials, installing all required conduits and utilities through the foundation walls and floor and stubbing at finished floor elevations, and installing all finished surface materials.

Question 4: Is the Field General Contractor responsible for the foundations/earthwork for the concession/ticket building?

Response: The field contractor is responsible for earthwork excavation, installation of foundations, placing and compacting backfill materials, installing all required conduits and utilities through the foundation walls and stubbing at finished floor elevations, and installing all finished surface materials.

Question 5: Is the Field General Contractor responsible for the foundations/earthwork for the Bathroom Building?

Response: The field contractor is responsible for earthwork excavation, installation of foundations, placing and compacting backfill materials, installing all required conduits and utilities through the foundation walls and stubbing at finished floor elevations, and installing all finished surface materials.

Question 6: Is the proposed infield area to be constructed in accordance with Detail #4 on Sheet L7.02 (depth of 3")?

Response: Contractor shall DELETE reference to 3" depth and ADD 4" depth to Detail 4, L7.07 – WARNING TRACK MIX

Question 7: What is the size of the Perforated HDPE collector pipe on the inside of the track?

Response: The perforated HDPE collector pipe for the synthetic turf field shall be 12."

Question 8: Is there a requirement to supply maintenance equipment for the new turf field?

Response: There is no requirement to supply maintenance equipment for the new turf field.

Question 9: Will the center logo on the synthetic turf field be more than one color? Is a logo drawing available?

Response: The logo shall be two colors. Refer to the Detail 1, L7.08 – SYNTHETIC TURF STRIPING LAYOUT for information on the center logo.

Question 10: Where will excess material, if any, be permitted to go?

Response: Per Wayland town by-law §198-504 EARTH MOVEMENT, excess material is not allowed to be disposed of outside of the town limits without a special permit issued by the Wayland ZBA. The contractor shall dispose of excess material at a location designated by the Owner's Representative.

Question 11: What is the fiber reinforced mesh noted in the anchor curb detail?

Response: Refer to Specification 03 30 00, Sub-section 2.03, A: FIBER REINFORCEMENT. Concrete reinforcing fibers shall be polypropylene, collated, fibrillated fibers from Fibermesh Co. or approved equal.

ATTACHMENTS:

Pre-Bid Attendee List
Basketball Benches Cut Sheets
Tree Grate Cut Sheets
Picnic Table Cut Sheets

END OF ADDENDUM NO. 1

**IMPROVEMENTS TO WAYLAND HIGH SCHOOL ATHLETIC FACILITIES
Wayland, MA**

IFB #19-1030

Pre-Bid Meeting Attendees

September 27, 2018

NAME	COMPANY	PHONE	EMAIL
Mike Salem/Peter Salem	Argus	781-275-2417	peter@argusconstructioncorp.com
Steve Zoto	MountainView	413-536-7555	stevez@mountainviewinc.com
Bill Lorenz	Act Global	978-404-1789	blorenz@actglobal.com
Travis Kalberer	David White	603-856-5442	travis@dwwsport.com
Mark Masella	Quirk	978-352-4666	mark@quirkcorp.com
Bill Austin	United Concrete	203-535-4338	baustin@unitedconcrete.com
Brian Turner	Aries Building Systems	603-216-1086	bturner@ariesbuildings.com
Jack Blais	Blais Electrical		blaiselectrical@live.com
Brandon Kunkel	Weston & Sampson	(617) 412-4480	kunkelb@wseinc.com
Cassidy Chroust	Weston & Sampson	(617) 412-4480	chroustc@wseinc.com
Ben Keefe	Town of Wayland		

Product Sheet**Solid Benches**

Timber seat with steel supports. FSC hardwood slats (7x7cm) locked into Streetlock® comb fittings; extendable with extension set



Product Code

SOL-L12-234
SOL-L12-300

Dimensions

ca. 234x93x45cm | 92x37x18" (wxdxh)
ca. 300x93x45cm | 118x37x18" (wxdxh)

Weight

ca. 161kg | 355lbs (plain, without options)
ca. 191kg | 421lbs (plain, without options)

Material

Seat: timber, untreated 100% Hardwood Cumaru
Solid slats (7x7cm | 2.8x2.8")

Supports: rectangular shaped feet in hot dip galvanised steel according to NEN-EN-ISO 1461: 2009NL

Optional: supports in CorTen Steel (weathering steel) or with double PPC finish in RAL colour

Mounting equipment

Stainless steel anti-theft flange nuts and Pin-Torx L-key

Accessories/extras

Quatro backrest or Soft backrest
Seat in black recycled plastic (All Black)
Armrest in stainless steel with micro-peen finish

Delivery

Supports, slats and mounting tools detached

Cleaning & Maintenance

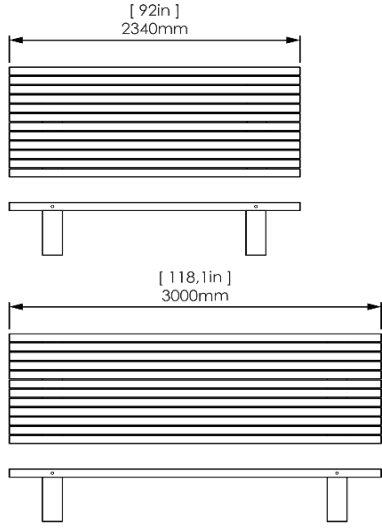
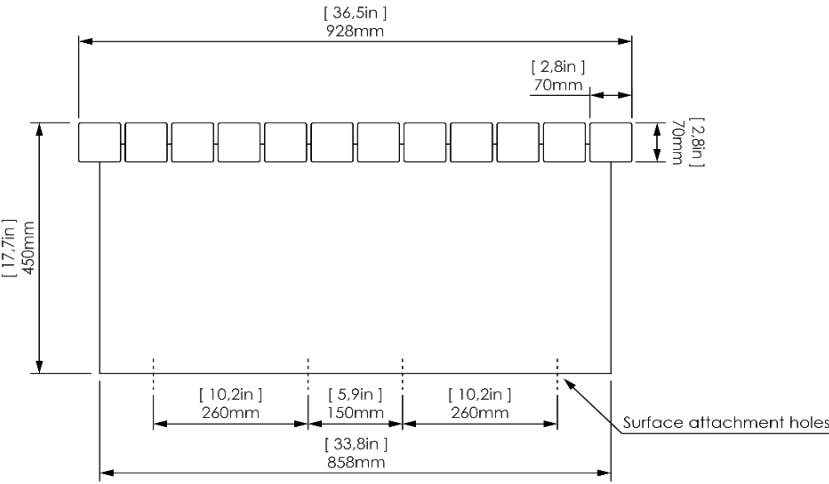
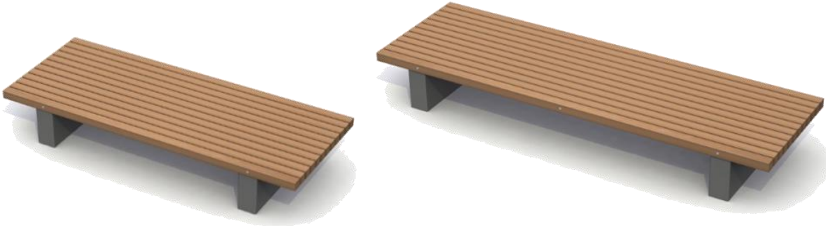
Timber: with clear water and soft brush or cloth; do not use high pressure cleaner or similar (this can open up the wood grain and make the surface coarse)
 The timber can be gently sanded every 2-3 year (in the direction of the wood grain)

Steel supports: with clear water and brush or high pressure water cleaner (avoid the timber seat)

Installation

Surface mounted; supports have four holes each for M12 bolts to connect to hard flat surface or in-ground footings

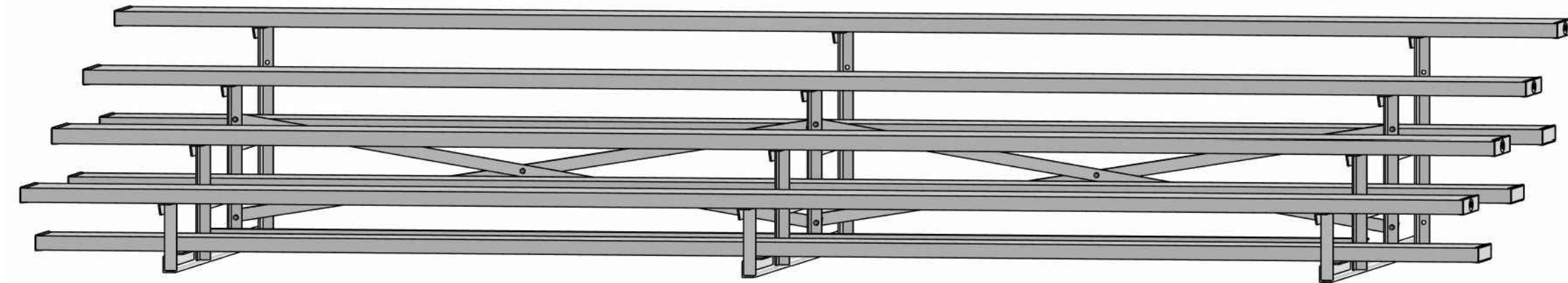
Rendering



*Metric units are leading

Design: Streetlife
 Protected by int. Modeldepos & Patents

NON-ELEVATED BLEACHER

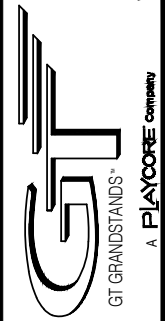


ALUMINUM 4 ROW x 15'-0" - UNIVERSAL SERIES

MODEL
LU-0415AS



2810 Sydney Road
Plant City, Florida 33566
Phone: 813-305-1415
Fax: 813-305-1419
www.gtgrandstands.com



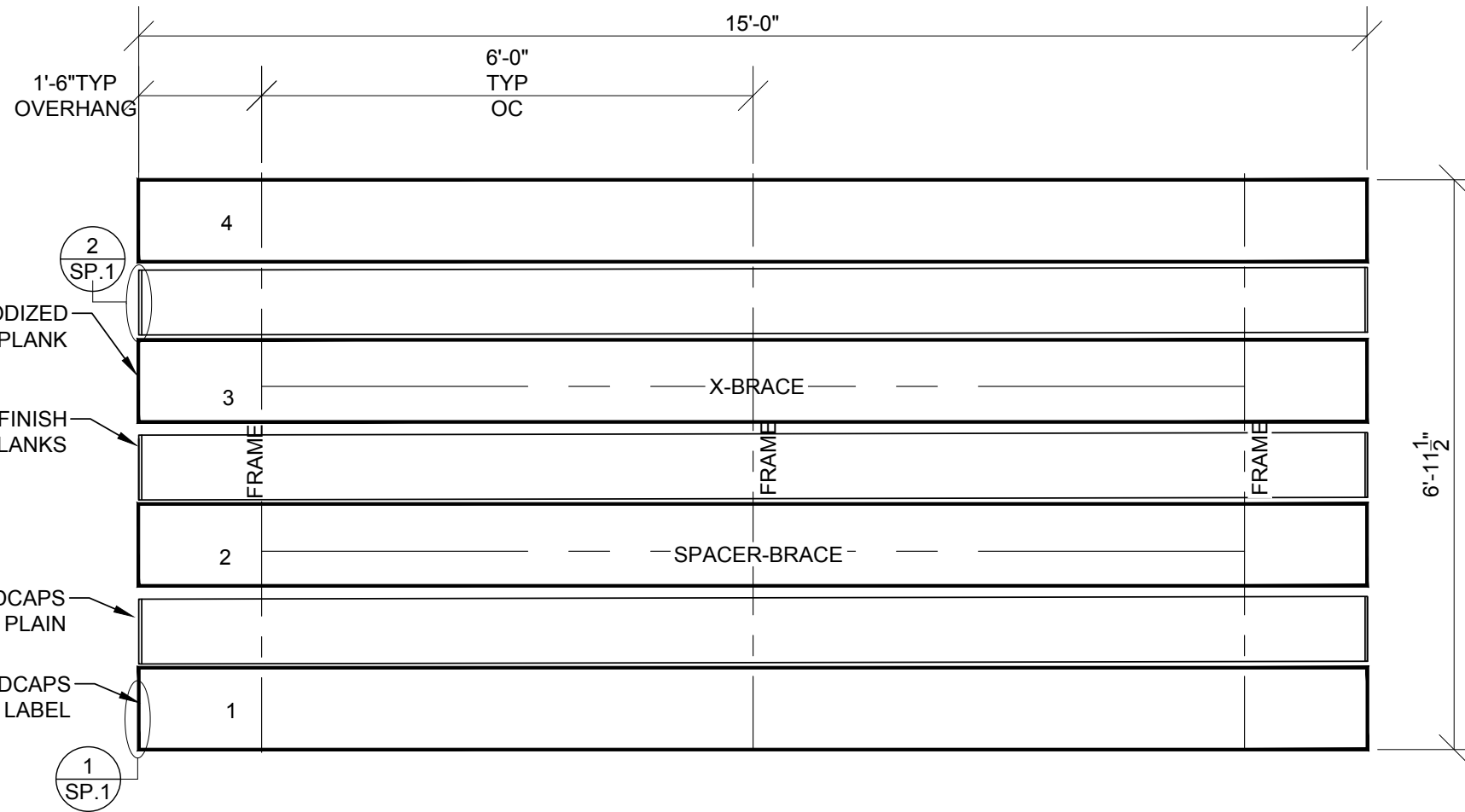
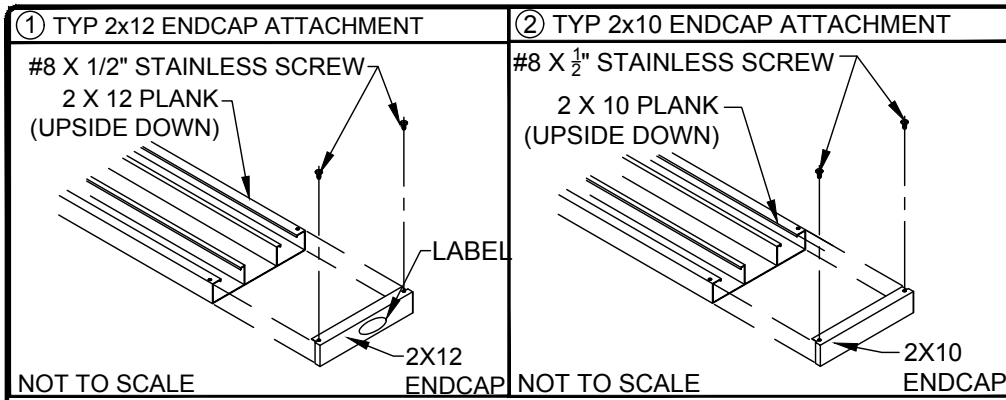
COVER SHEET
4 ROW BLEACHER
6" RISE / 12" SEAT

LU-0415AS
OPTIONAL -MS (MUD SILL)
OPTIONAL -RB (RUBBER BUMPERS)

DRAWN BY
MME
CHECKED BY
TLC
DATE
11/01/2016
SCALE
JOB NO.

CS.1 - COVER SHEET
SP.1 - BLEACHER SEATING PLAN
FB.1 - FRAME AND BRACING
BA.1 - BLEACHER ASSEMBLY
FP.1 - FOUNDATION PLAN

LU-0415AS
DWG NO.
CS.1



SEATING PLAN

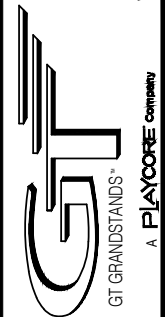
SCALE: 1/2" = 1' - 0"

SECTION LENGTH	GROSS SEATS	ACTUAL SEATS	NO. OF ROWS	NET SEATS
15	10.00	10.00	4	40
				<i>NET SEATS</i> 40
				<i>WHEELCHAIR SPACES</i> 0
				TOTAL NET SEATING CAPACITY 40
				(BASED ON 18" PER SEAT)

LOCAL CODES AND SPECIFICATIONS WILL VARY FROM REGION TO REGION AND WILL ALSO CHANGE OVER TIME. IT IS THE BUYER'S RESPONSIBILITY TO CHECK LOCAL CODES FOR COMPLIANCE.



2810 Sydney Road
Plant City, Florida 33566
Phone: 813-305-1415
Fax: 813-305-1419
www.gtgrandstands.com



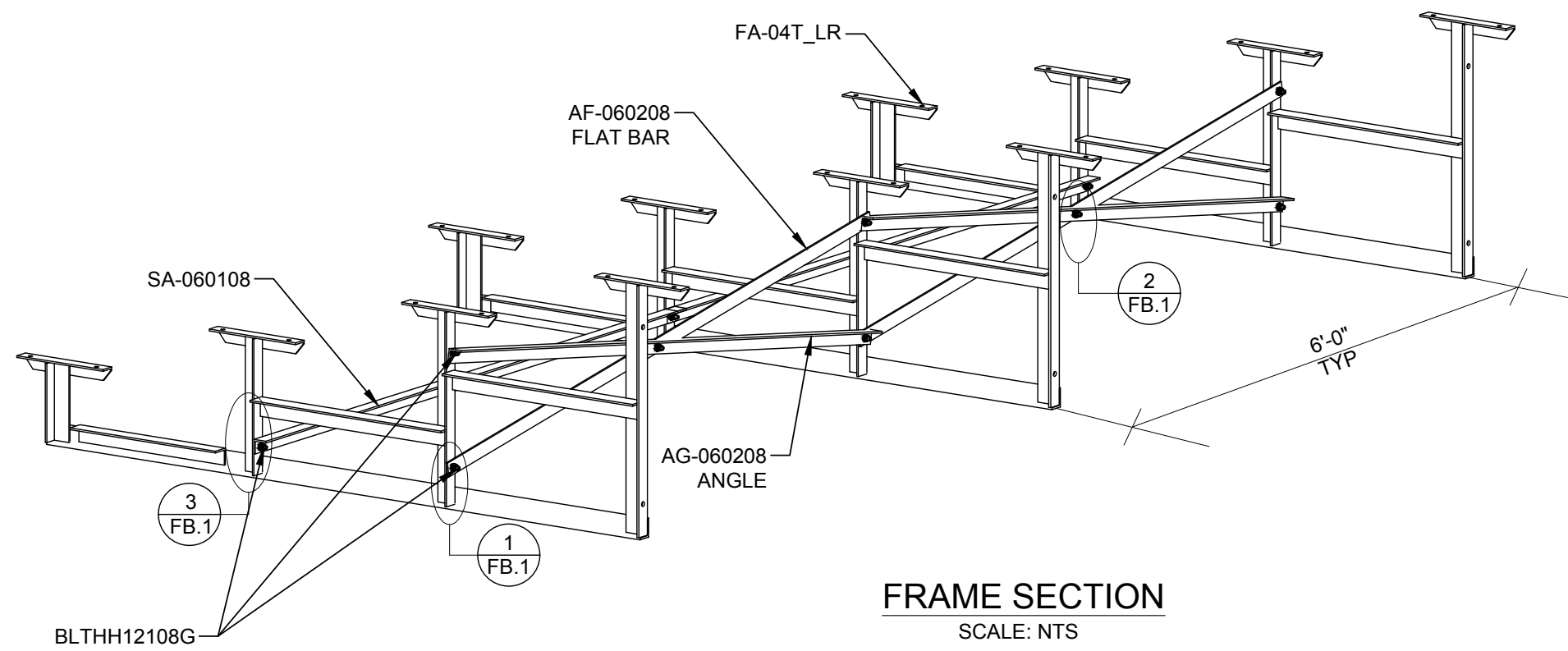
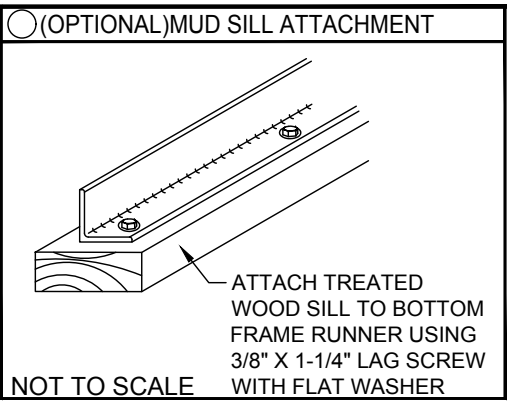
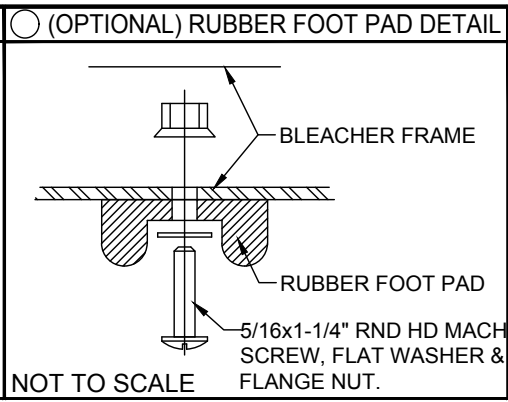
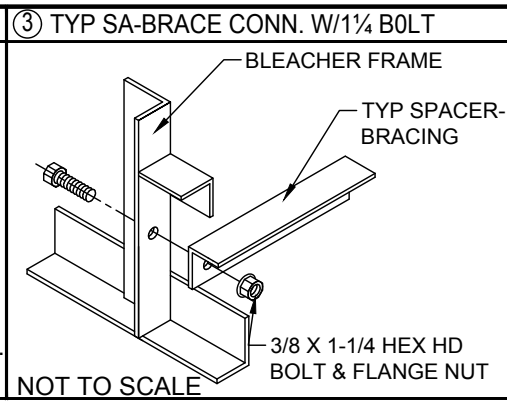
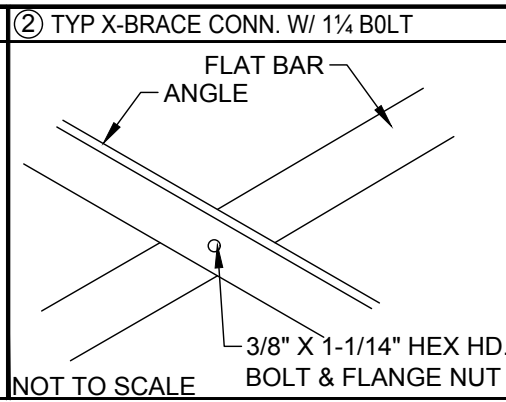
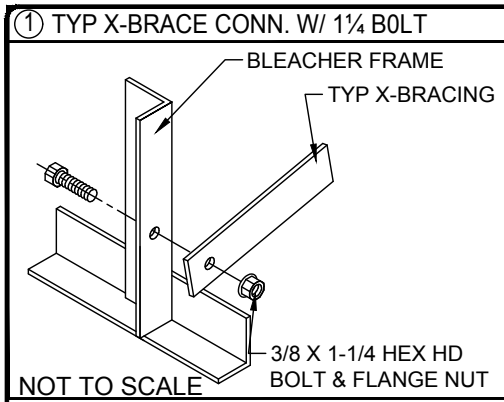
SEATING PLAN
4 ROW BLEACHER
6" RISE / 12" SEAT

LU-0415AS
LUSERIES

DRAWN BY
MME
CHECKED BY
TLC
DATE
11/01/2016
SCALE
1/2" = 1' - 0"
JOB NO.

LU-0415AS
DWG NO.

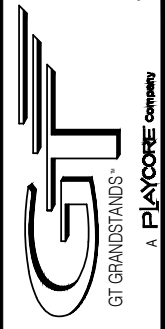
SP.1



FRAME SECTION
SCALE: NTS



2810 Sydney Road
Plant City, Florida 33566
Phone: 813-305-1415
Fax: 813-305-1419
www.gtgrandstands.com



FRAME AND BRACE
4 ROW BLEACHER
6" RISE / 12" SEAT

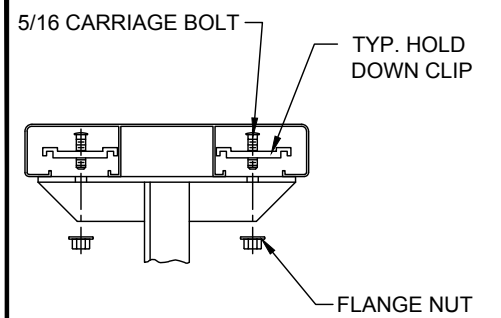
LU-0415AS
OPTIONAL -MS (MUD SILL)
OPTIONAL -RB (RUBBER BUMPER)

DRAWN BY
MME
CHECKED BY
TLC
DATE
11/01/2016
SCALE
AS SHOWN
JOB NO.

LU-0415AS
DWG NO.

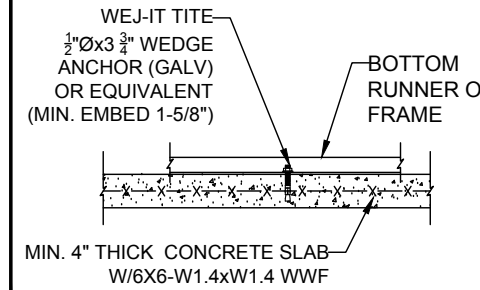
FB.1

① TYP 2x10\2x12 PLANK ATTACHMENT



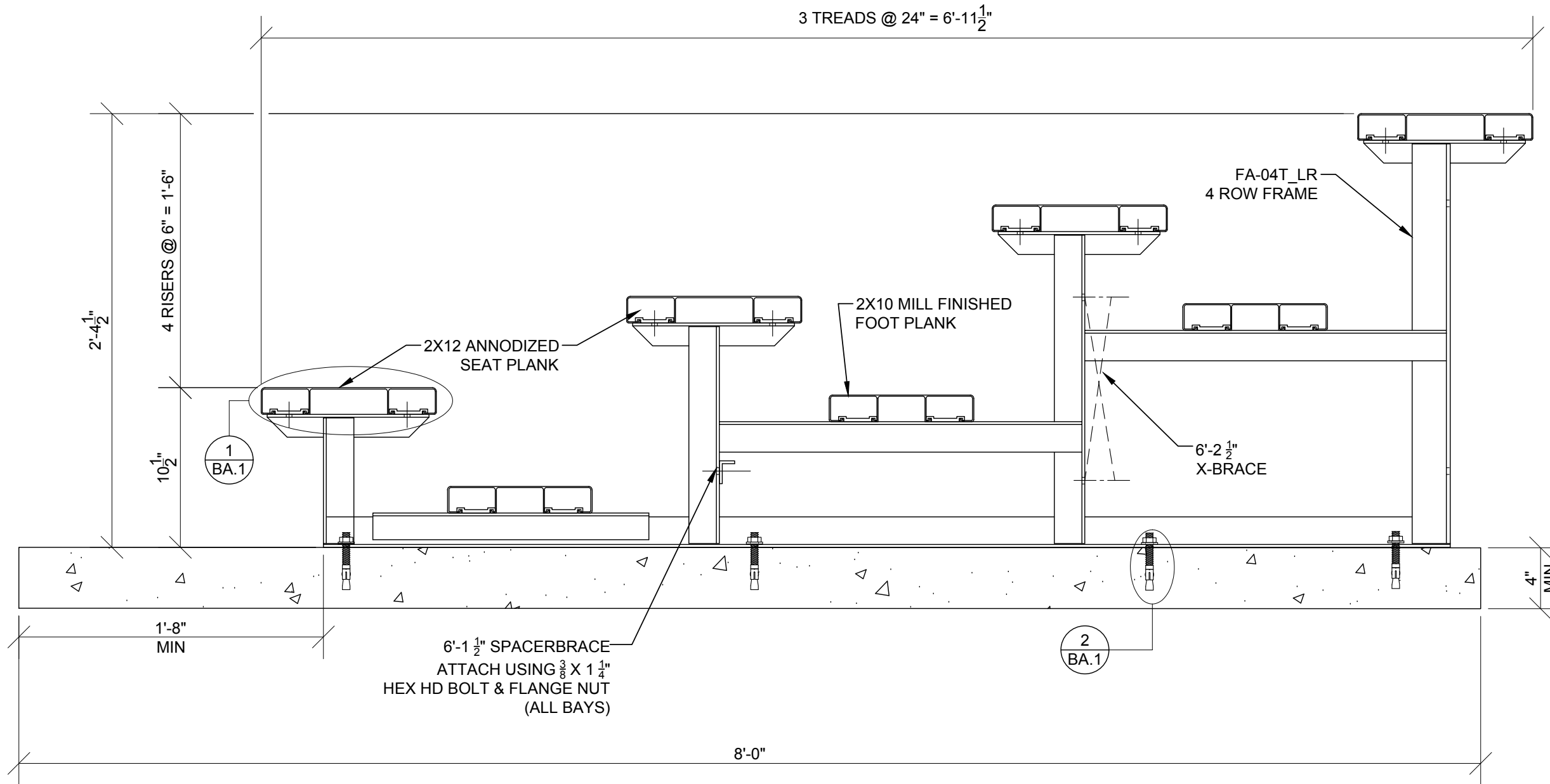
NOT TO SCALE

② OPTIONAL ANCHOR WEDGE DETAIL*



NOT TO SCALE

NOTE: LEAVE FLANGE NUT LOOSE UNTIL CLIPS HAVE BEEN SECURED TO PLANKS.



BLEACHER ASSEMBLY

SCALE: 1 1/2" = 1' - 0"

*CONCRETE WEDGE ANCHORS NOT INCLUDED WITH ALL UNITS. IF USING OTHER ANCHORING SYSTEM, SKIP THIS STEP AND REFER TO INSTRUCTIONS SPECIFIC TO THE ANCHORING SYSTEM PURCHASED FOR YOUR UNIT. SEE PRINT FP.1 (INCLUDED IN THIS PACKET) FOR GENERAL CONCRETE FOUNDATION SPECIFICATIONS.

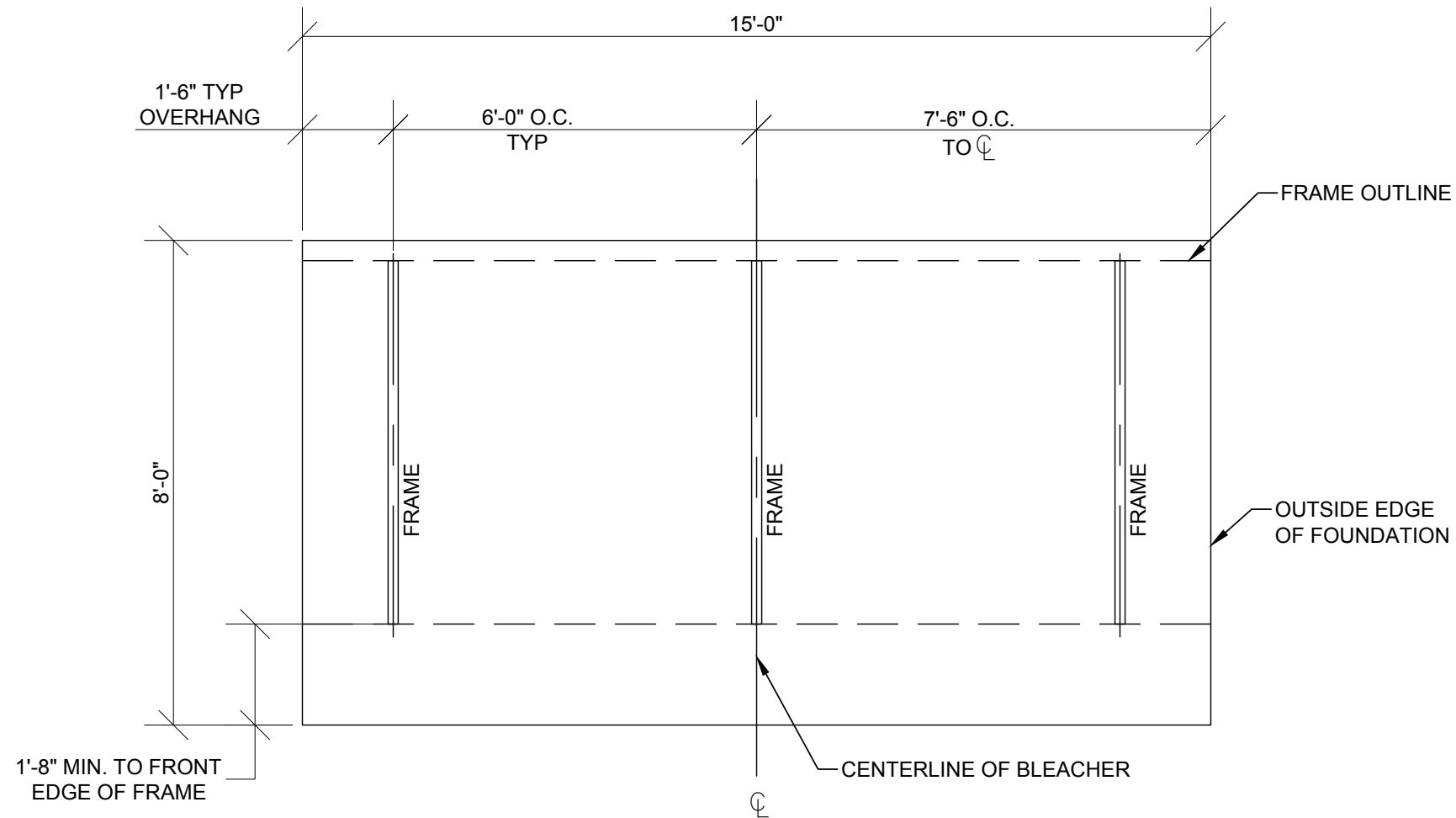


2810 Sydney Road
Plant City, Florida 33566
Phone: 813-305-1415
Fax: 813-305-1419
www.gtgrandstands.com

BLEACHER ASSEMBLY
4 ROW BLEACHER
6" RISE / 12" SEAT

LU-0415AS
(OPTIONAL CONCRETE FOUNDATION)
LU SERIES

DRAWN BY	MME
CHECKED BY	TLC
DATE	11/01/2016
SCALE	
JOB NO.	
LU-0415AS	
DWG NO.	BA.1



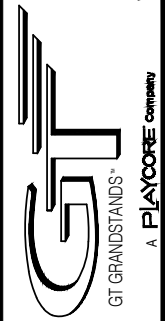
OPTIONAL FOUNDATION PLAN*

SCALE: 3/8" = 1' - 0"

* MINIMUM FOUNDATION AREA SHOWN. DEPENDING ON LOCAL SOIL CONDITIONS, BLEACHER CAN BE INSTALLED ON A CONCRETE PAD OR FOOTERS, OR ATTACHED TO 2x6 TREATED LUMBER GROUND SILLS AND PLACED ON COMPACTED STONE, ASPHALT, OR ANY OTHER SMOOTH, SOLID, LEVEL SURFACE. CONSULT YOUR LOCAL CONCRETE CONTRACTOR TO DETERMINE PROPER CONCRETE SPECIFICATIONS FOR YOUR LOCAL SOIL AND WEATHER-RELATED CONDITIONS. THE BEARING SURFACE MUST BE CAPABLE OF SUPPORTING A MINIMUM OF 660 POUNDS PER LINEAR FOOT. TO MEET LOCAL CODES, BLEACHERS WILL NEED TO BE ANCHORED. ANCHORING SYSTEMS FOR ALL SURFACE TYPES ARE AVAILABLE - CONTACT YOUR BLEACHER SALES REPRESENTATIVE FOR MORE INFORMATION.



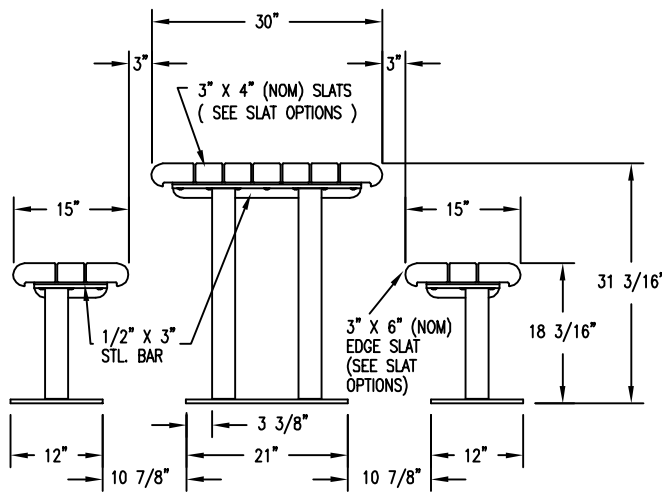
2810 Sydney Road
Plant City, Florida 33566
Phone: 813-305-1415
Fax: 813-305-1419
www.gtgrandstands.com



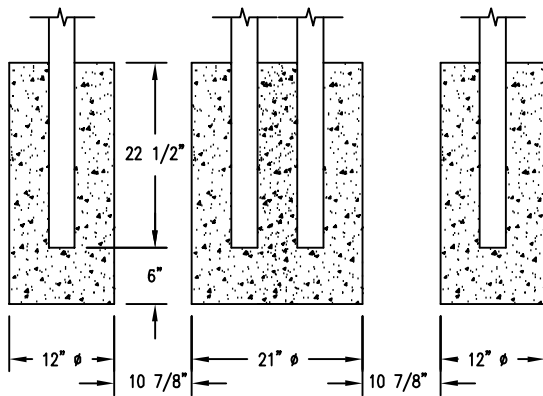
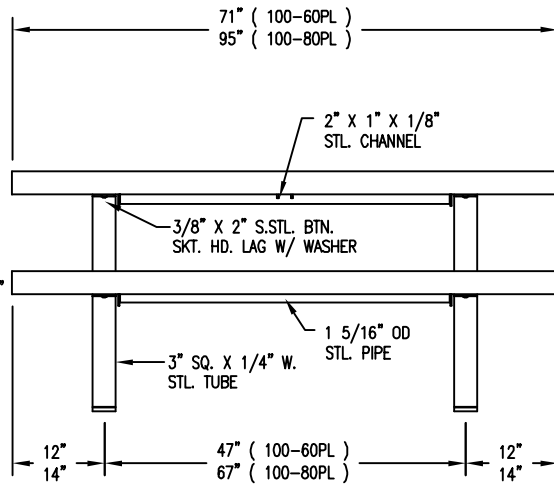
FOUNDATION PLAN
4 ROW BLEACHER
6" RISE / 12" SEAT

LU-0415AS
LU SERIES

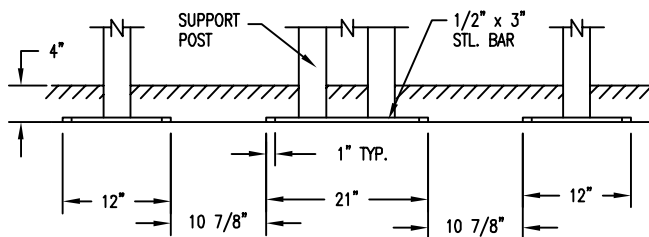
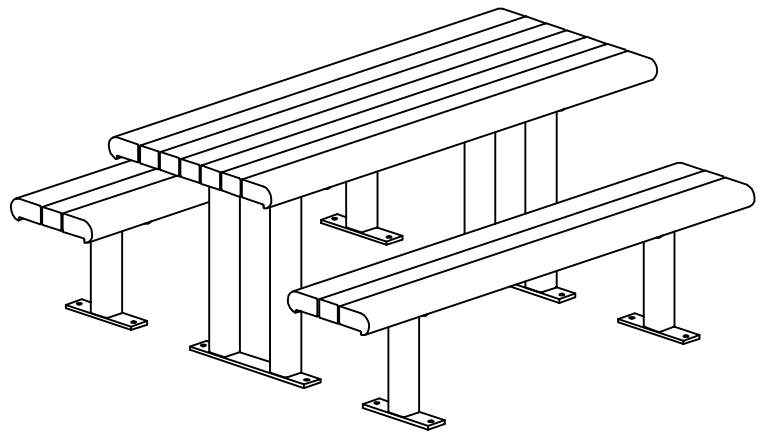
DRAWN BY MME
CHECKED BY TLC
DATE 11/01/2016
SCALE
JOB NO. LU-0415AS
DWG NO. FP.1



S-2 SURFACE MOUNT



S-1 EMBEDMENT



S-4 SUB FLOOR

LENGTH OPTIONS

- 6' TABLE
- 8' TABLE

SLAT OPTIONS

- "CEDAR" RECYCLED PLASTIC
- "GREY" RECYCLED PLASTIC
- "REDWOOD" RECYCLED PLASTIC
- "WALNUT" RECYCLED PLASTIC
- OTHER _____

NOTES:

- 1.) ALL STL. MEMBERS COATED W/ ZINC RICH EPOXY THEN FINISHED W/ POLYESTER POWDER COATING.
- 2.) 1/2" X 3 3/4" EXPANSION ANCHOR BOLTS PROVIDED. FOR OPTIONS S-2 & S-4.



TABLE

DATE DRAWN : 10/10/95
 DRAWN BY : AH
 DATE REV. : 01/14/14
 REV. BY : ESS

REV.
F

DRAWING
NUMBER

100 SERIES PL

SHEET
1 OF 2

PARTS LIST FOR S-2

ITEM	QTY	PART NO	DESCRIPTION
1	2	0-100-00-01/S-2	TABLE TOP SUPPORT FOR SURFACE
2	4	0-100-00-02/S-2	SEAT SUPPORT FOR SURFACE MT
3	1	0-100-60-05	6' TABLE TOP BRACE
4	2	0-100-60-06	6' SEAT BRACE
5	7	0-88-60PL-02	3" X 4" X 71" INT'R SLAT, PLASTIC
6	6	0-88-60PL-03	71" EDGE SLAT, PLASTIC
7	39	1-13-016	3/8" X 2" SS BTN SKT HD LAG SCR
8	39	1-22-024	3/8" SS FLAT WASHER

NOTE:

- 1.) DURING ASSEMBLY PROCEDURE;
DO NOT COMPLETELY TIGHTEN HARDWARE.
- 2.) THE ACTUAL PARTS WILL NOT BE NUMBERED.
NUMBERS ONLY APPLY TO DRAWING.
- 3.) UPON COMPLETION OF ASSEMBLY SQUARE
ALL COMPONENTS THEN TIGHTEN ALL HARDWARE.
- 4.) MOUNT AND ANCHOR AS SPECIFIED.

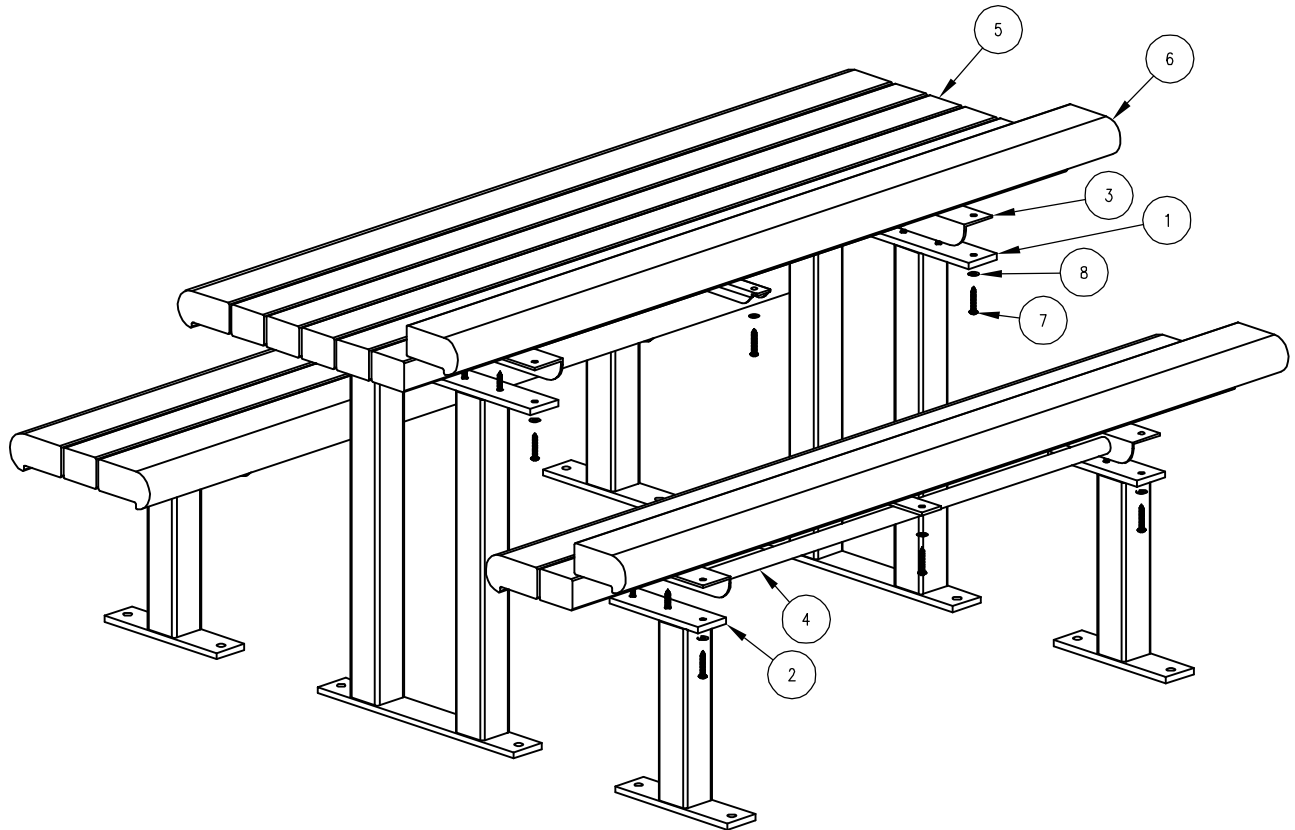
TOOLS REQ'D

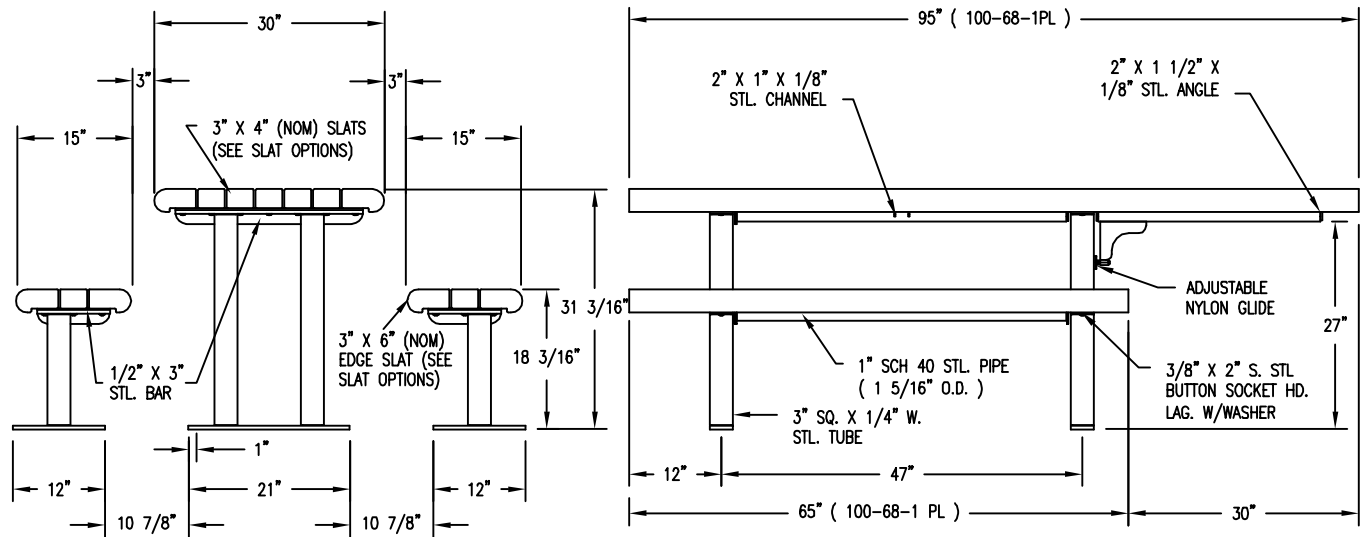
- 3/4" WRENCH
1/4" ALLEN WRENCH
1/2" MASONRY DRILL BIT
DRILL

KITS PROVIDED FOR S-2

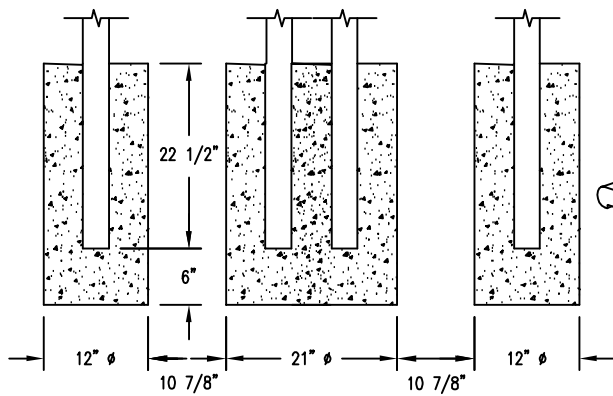
ITEM	QTY	PART NO	DESCRIPTION
9	3	K-ANCO860-4	1/2" X 3 3/4" SS ANCHOR KIT (4PC)
10	1	K-BL0632-40	3/8" LAG HARDWARE KIT (40PC)

① ATTACH SLATS & BRACES TO SUPPORTS.

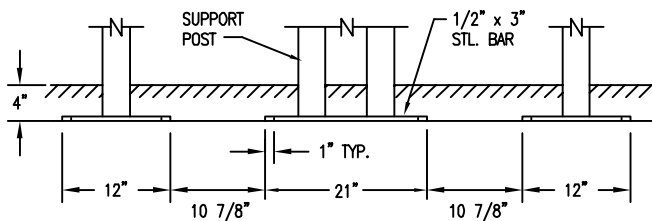
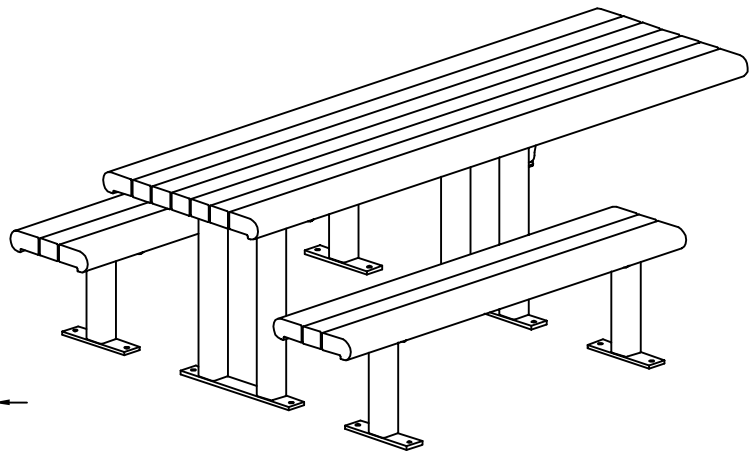




S-2 SURFACE MOUNT



S-1 EMBEDMENT



S-4 SUB FLOOR

NOTES:

- 1.) ALL STL. MEMBERS COATED W/ ZINC RICH EPOXY THEN FINISHED W/ POLYESTER POWDER COATING.
- 2.) 1/2" X 3 3/4" EXPANSION ANCHOR BOLTS PROVIDED FOR OPTIONS S-2 & S-4.

SLAT OPTIONS

- "CEDAR" RECYCLED PLASTIC
- "GREY" RECYCLED PLASTIC
- "REDWOOD" RECYCLED PLASTIC
- "WALNUT" RECYCLED PLASTIC
- OTHER _____



TABLE

DATE DRAWN : 04/01/96
 DRAWN BY : AWH
 DATE REV. : 01/14/14
 REV. BY : ESS

REV.
F

DRAWING NUMBER

100-68-1 PL

SHEET
1 OF 2

PARTS LIST FOR S-2

ITEM	QTY	PART NO	DESCRIPTION
1	2	0-100-00-01/S-2	TABLE TOP SUPPORT FOR SURFACE
2	4	0-100-00-02/S-2	SEAT SUPPORT FOR SURFACE MT
3	2	0-100-60-06	6' SEAT BRACE
4	1	0-100-68-1-05	TABLE TOP BRACE, HANDICAPPED
5	5	0-100-681PL-1	3" X 4" X 95" INT'R TABLE SLAT, PLASTIC
6	1	0-100-681PL-2	95" RIGHT EDGE TABLE SLAT, PLASTIC
7	2	0-100-681PL-3	3" X 4" X 65" INT'R SEAT SLAT, PLASTIC
8	2	0-100-681PL-4	65" RIGHT EDGE SEAT SLAT, PLASTIC
9	1	0-100-681PL-8	95" LEFT EDGE TABLE SLAT, PLASTIC
10	2	0-100-681PL-9	65" LEFT EDGE SEAT SLAT, PLASTIC
11	46	1-13-016	3/8" X 2" SS BTN SKT HD LAG SCR
12	46	1-22-024	3/8" SS FLAT WASHER
13	2	5-48-076	3/8" X 1 1/2" SWIVEL GLIDE

NOTE:

- 1.) DURING ASSEMBLY PROCEDURE;
DO NOT COMPLETELY TIGHTEN HARDWARE.
- 2.) THE ACTUAL PARTS WILL NOT BE NUMBERED.
NUMBERS ONLY APPLY TO DRAWING.
- 3.) UPON COMPLETION OF ASSEMBLY SQUARE
ALL COMPONENTS THEN TIGHTEN ALL HARDWARE.
- 4.) MOUNT AND ANCHOR AS SPECIFIED.

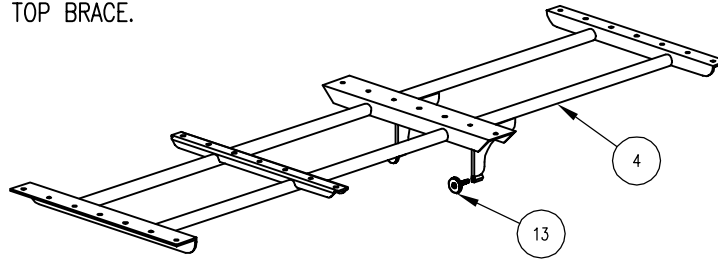
TOOLS REQ'D

- 3/4" WRENCH
9/16" WRENCH
1/4" ALLEN WRENCH
1/2" MASONRY DRILL BIT
DRILL

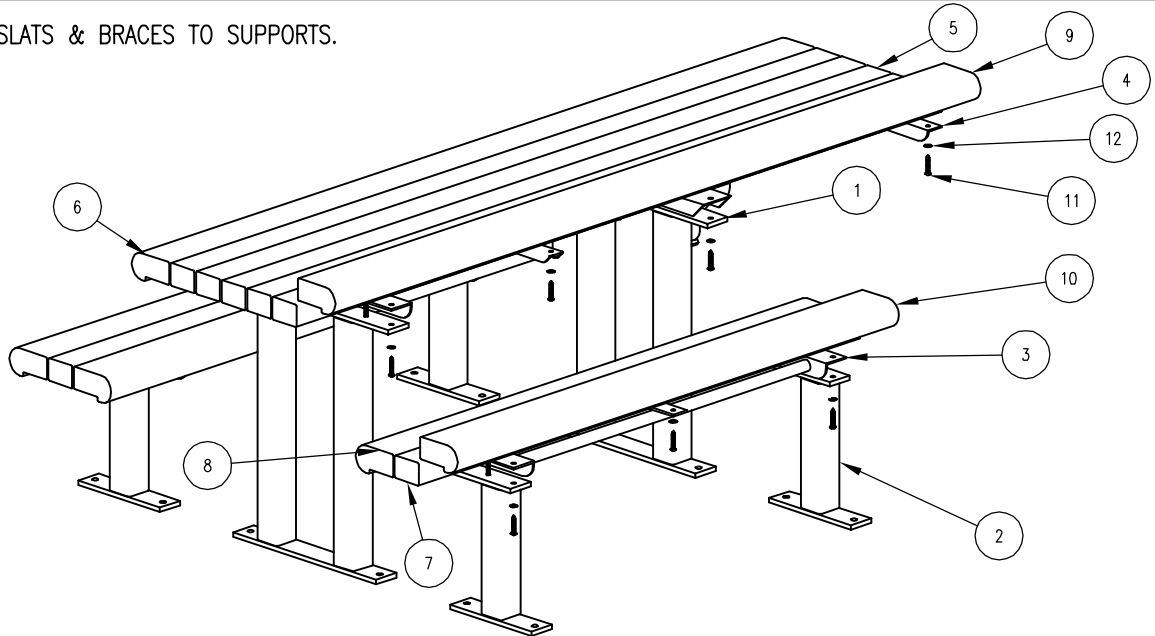
KITS PROVIDED FOR S-2

ITEM	QTY	PART NO	DESCRIPTION
14	3	K-ANCO860-4	1/2" X 3 3/4" SS ANCHOR KIT (4PC)
15	1	K-BL0632-48	3/8" LAG HARDWARE KIT (48PC)
16	1	K-GL0624-2	3/8" X 1 1/2" GLIDE KIT (2PCS)

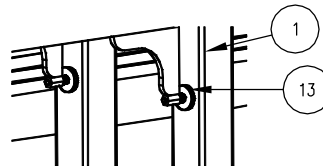
① ATTACH GLIDES TO TABLE TOP BRACE.



② ATTACH SLATS & BRACES TO SUPPORTS.



③ UNSCREW SWIVEL GLIDE SO IT FITS TIGHT AGAINST SUPPORT POST TUBE AND TIGHTEN.



6090L

Bond Street

60" x 60"

tree grate in two sections. Two lightwells as shown. To be used exclusively with TGL-2 series IRONSMITH Lamp assembly. Lamp sold separately from Tree Grate.

1/2" maximum slot opening for A.D.A. compliance and pedestrian safety.

Cast from 100% recycled Iron, Aluminum, or Bronze for Pedestrian loads only.

Tree opening:
16", 36"
Grates can be ordered with or later expanded to these openings.

Finish: Unfinished, or Black Dip, or Enamel Paint, or Polyurethane Paint, or Powder Coat. Zinc undercoat available.

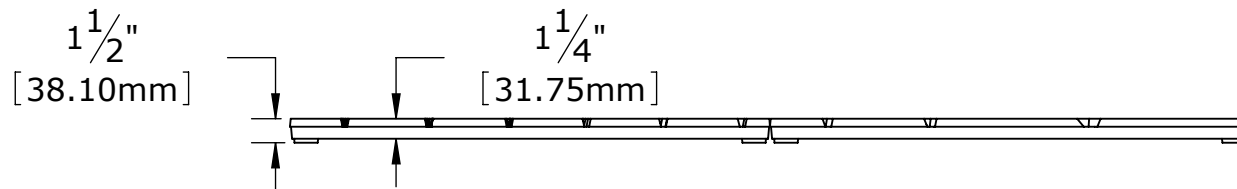
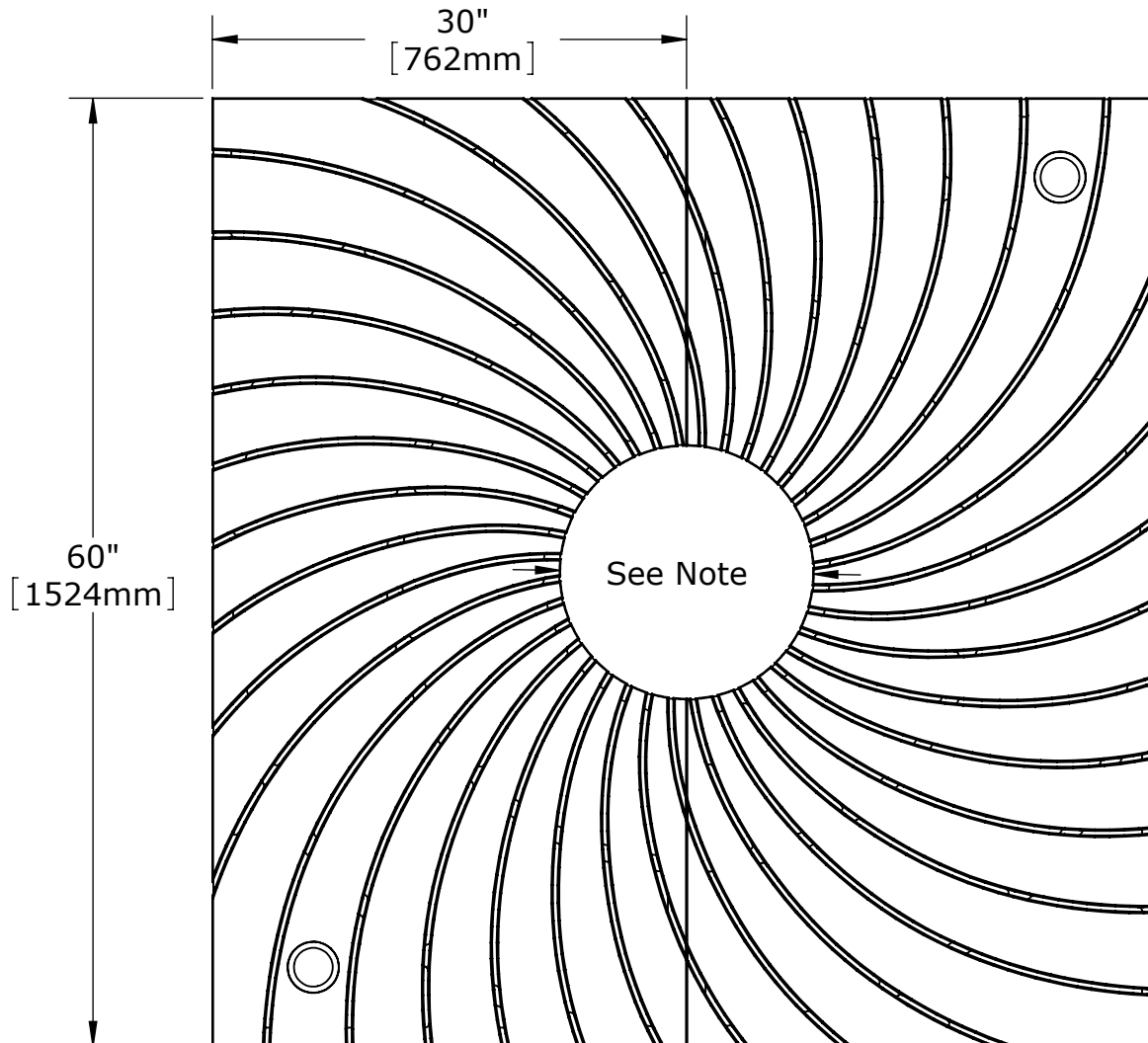
Specify finish and color.

Use Frame Model:
6000F

Weight:
Iron=485 lb/ 220Kg
Aluminum=185 lb/ 85Kg

DO NOT SCALE DRAWING

IRONSMITH
41-701 Corporate Way #3
Palm Desert, CA 92260
(800) 338-4766
(760) 776-5080 Fax



PROPRIETARY AND CONFIDENTIAL

This drawing embodies a confidential design of IRONSMITH, INC. Palm Desert, CA. All design, manufacturing, reproduction, use, sale, and other rights regarding the same are expressly reserved. This drawing is submitted under confidential relationship for a specific purpose and the recipient agrees by accepting this drawing not to supply or disclose any information regarding it to any unauthorized person or to incorporate any special feature peculiar to this design in other projects. The information in this drawing may be covered completely or in part by patents pending.