

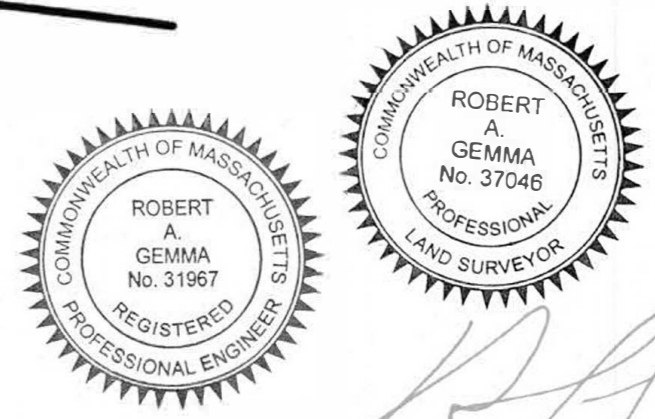
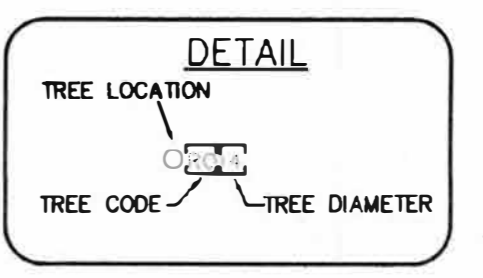
- NOTES:**
- SUBJECT PARCEL IS SHOWN AS ASSESSORS SHEET 24, LOT 151H. RECORD TITLE FROM BOOK 60615, PAGES 573.
 - CONTOURS, ELEVATIONS AND UTILITY LOCATIONS DEPICTED ON THIS PLAN, BOTH ABOVE- AND BELOW-GROUND, ARE COMPILED FROM RECORD PLAN LOCATIONS. METROWEST ENGINEERING, INC. DOES NOT WARRANT THAT ALL UTILITIES ARE SHOWN OR THAT CONTOURS AND UTILITIES THAT ARE DEPICTED ARE SHOWN IN THE CORRECT LOCATION, OR WITH THE PROPER MATERIAL DESIGNATION. METROWEST ENGINEERING, INC. DOES NOT WARRANT OR PROVIDE AN EXPRESS OR IMPLIED WARRANTY THAT ALL SUBSURFACE IMPROVEMENTS ARE SHOWN OR ARE SHOWN CORRECTLY, INCLUDING, BUT NOT LIMITED TO, UTILITIES, UNDERGROUND VAULTS, UNDERGROUND TANKS OR CHAMBERS, BUNKERS, DUCT BANKS, AND/OR OTHER MAN-MADE IMPROVEMENTS THAT LIE BENEATH THE GROUND SURFACE AT THE TIME OF THE SURVEY.
 - THE PROPERTY DESCRIBED ON THIS SURVEY DOES NOT LIE WITHIN A SPECIAL FLOOD HAZARD AREA AS DEFINED BY THE FEDERAL EMERGENCY MANAGEMENT AGENCY; THE PROPERTY LIES WITHIN ZONE "X" OF THE FLOOD INSURANCE RATE MAP IDENTIFIED AS MAP NUMBER 25017C0526F, BEARING AN EFFECTIVE DATE OF JULY 7, 2014.
 - WETLAND BOUNDARY WAS DELINEATED BY METROWEST ENGINEERING INC ON JUNE 13, 2005 AND SEPTEMBER 30, 2005.

LEGEND

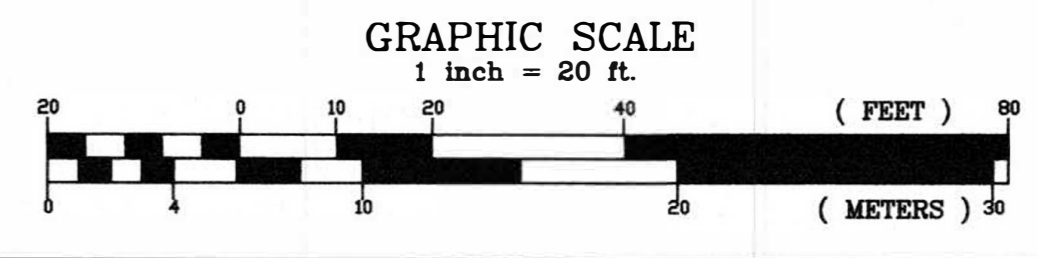
A.C.	AIR CONDENSER	AV	ARBORVITAE	CB	CONCRETE BOUND	D.C.B.	DRAIN CATCH BASIN	D.H.	DRILL HOLE	E	ELECTRIC LINE	E.H.H.	ELECTRIC HANDHOLE	E.M.	ELECTRIC METER	EXIST.	EXISTING	FENCE	FOUND	G.G.	GAS GATE	GAS	GAS LINE	G.M.	GAS METER	H.D.P.E.	HIGH DENSITY POLYETHYLENE	HYDRANT	INVERT	IP	IRON PIN	IR	IRON ROD	LP	LIGHT POST	LS	LANDSCAPE	MB	MAILBOX	N/F	NOW OR FORMERLY	S.B.	STONE BOUND	T	TRANSFORMER	TB	TELEPHONE BOX	TW	TOP OF WALL	VH	VERIZON HANDHOLD	W.G.	WATER GATE	W	WATER LINE	WSO	WATER SHUTOFF	W	WITH	+100.00	EXIST. SPOT GRADE	-100	EXIST. GRADING
------	---------------	----	------------	----	----------------	--------	-------------------	------	------------	---	---------------	--------	-------------------	------	----------------	--------	----------	-------	-------	------	----------	-----	----------	------	-----------	----------	---------------------------	---------	--------	----	----------	----	----------	----	------------	----	-----------	----	---------	-----	-----------------	------	-------------	---	-------------	----	---------------	----	-------------	----	------------------	------	------------	---	------------	-----	---------------	---	------	---------	-------------------	------	----------------

TREE DESCRIPTION LEGEND

CODE	DESCRIPTION
AV	ARBORVITAE
CA	CATALPA
DW	DOGWOOD
PE	PEAR
RO	RED OAK



FOR METROWEST ENGINEERING, INC. DATE 1/3/2011
 ROBERT A. GEMMA, P.E. # 31967 (CIVIL)
 P.L.S. # 37046



AS-BUILT ROAD PLAN
 MICHAEL ROAD EXTENSION
 IN
 WAYLAND, MASS
 (MIDDLESEX COUNTY)

PREPARED FOR:
 BARBERRY HOMES, LLC
 10 SPEEN STREET, 4TH FLOOR
 FRAMINGHAM, MA 01701

PROPERTY OF:
 BARBERRY HOMES, LLC
 10 SPEEN STREET, 4TH FLOOR
 FRAMINGHAM, MA 01701

ENGINEERS & SURVEYORS:
MWE METROWEST ENGINEERING, INC.
 75 FRANKLIN STREET
 FRAMINGHAM, MA 01702
 TEL.: (508)626-0063
 FAX.: (508)875-6440

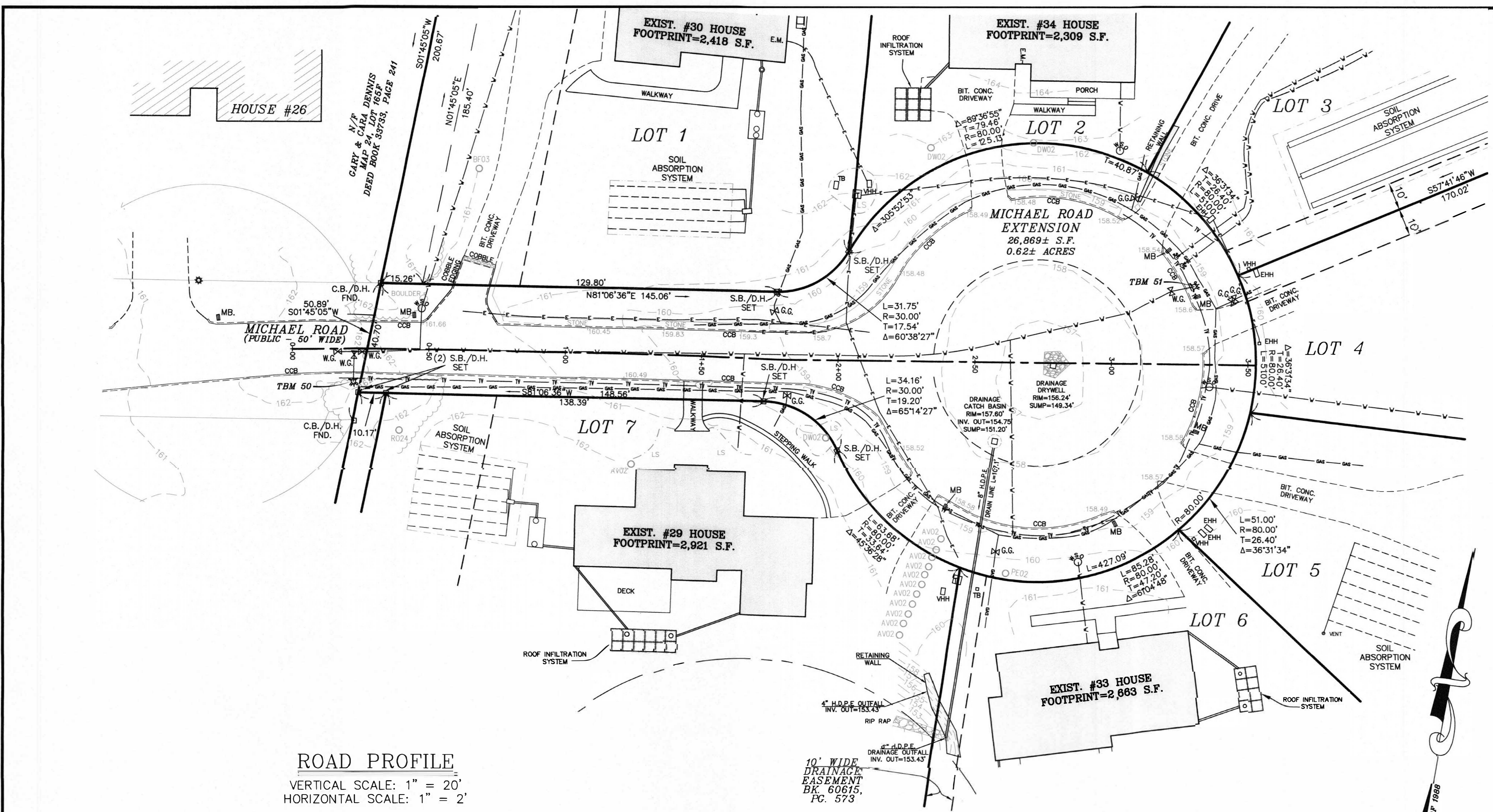
SHEET 1 OF 2 DATE: DECEMBER 10, 2020
 CALC'D BY: RAG FIELD BK: 712,714 CAD FILE: FINAL AS-BUILT.dwg
 DRAFTER: CJC PROJECT: WY_MIC DWG FILE:

BENCHMARKS

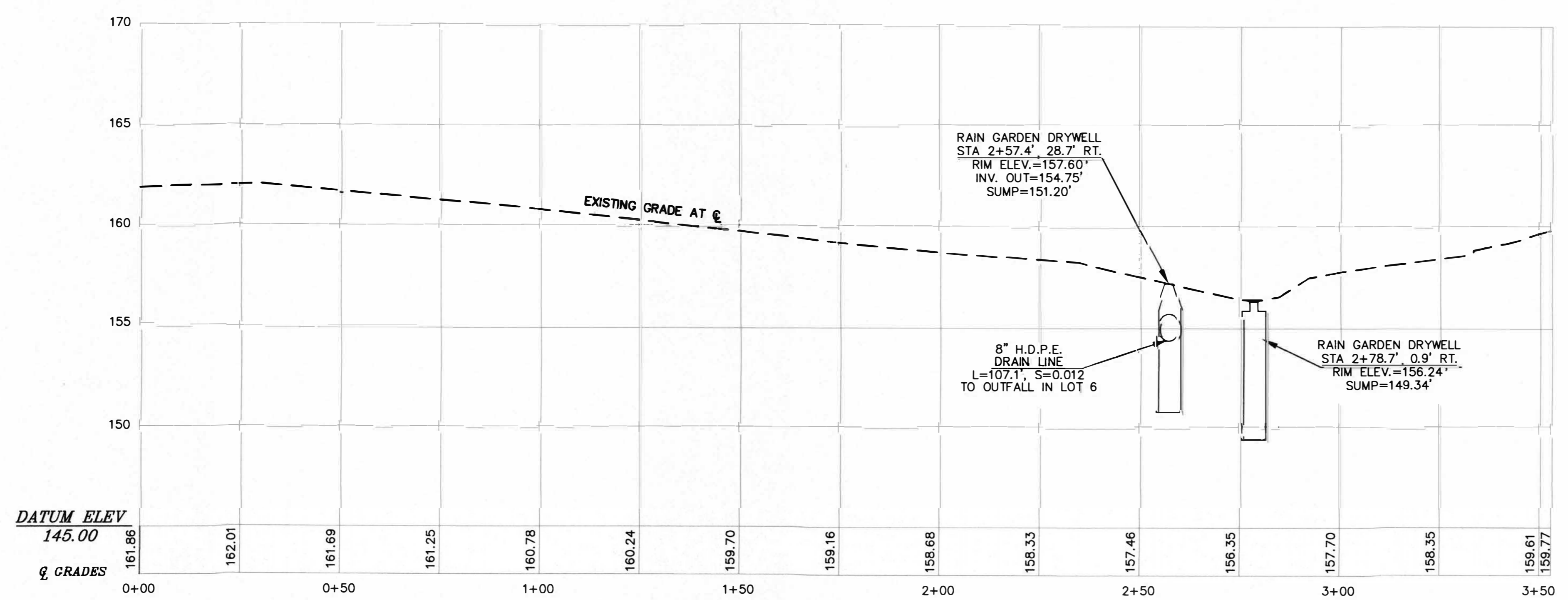
T.B.M.	DESCRIPTION	ELEVATION
50	NORTH NUT ON HYDRANT	163.96'
51	NORTH NUT ON HYDRANT	160.58'

NOTES:

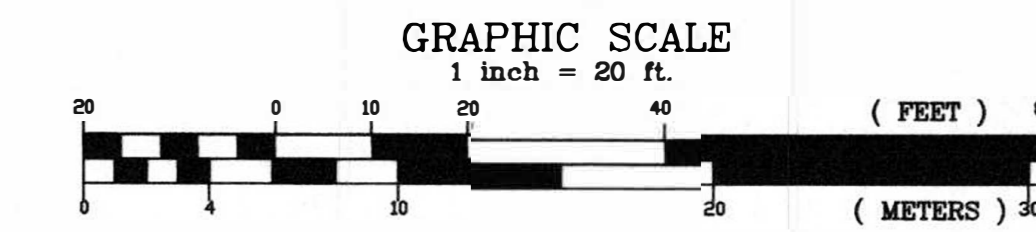
- SUBJECT PARCEL IS SHOWN AS ASSESSORS SHEET 24, LOT 15H, RECORD TITLE FROM BOOK 60615, PAGES 573.
- CONTOURS, ELEVATIONS AND UTILITY LOCATIONS DEPICTED ON THIS PLAN, BOTH ABOVE- AND BELOW-GROUND, ARE COMPILED FROM RECORD PLAN LOCATIONS. METROWEST ENGINEERING, INC. DOES NOT WARRANT THAT ALL UTILITIES ARE SHOWN OR THAT CONTOURS AND UTILITIES THAT ARE DEPICTED ARE SHOWN IN THE CORRECT LOCATION, OR WITH THE PROPER MATERIAL DESIGNATION. METROWEST ENGINEERING, INC. DOES NOT WARRANT OR PROVIDE AN EXPRESS OR IMPLIED WARRANTY THAT ALL SUBSURFACE IMPROVEMENTS ARE SHOWN OR ARE SHOWN CORRECTLY, INCLUDING, BUT NOT LIMITED TO, UTILITIES, UNDERGROUND VAULTS, UNDERGROUND TANKS OR CHAMBERS, BUNKERS, DUCT BANKS, AND/OR OTHER MAN-MADE IMPROVEMENTS THAT LIE BENEATH THE GROUND SURFACE AT THE TIME OF THE SURVEY.
- THE PROPERTY DESCRIBED ON THIS SURVEY DOES NOT LIE WITHIN A SPECIAL FLOOD HAZARD AREA AS DEFINED BY THE FEDERAL EMERGENCY MANAGEMENT AGENCY; THE PROPERTY LIES WITHIN ZONE "X" OF THE FLOOD INSURANCE RATE MAP IDENTIFIED AS MAP NUMBER 25017C0526F, BEARING AN EFFECTIVE DATE OF JULY 7, 2014.
- WETLAND BOUNDARY WAS DELINEATED BY METROWEST ENGINEERING INC ON JUNE 13, 2005 AND SEPTEMBER 30, 2005.



ROAD PROFILE
 VERTICAL SCALE: 1" = 20'
 HORIZONTAL SCALE: 1" = 2'



Robert A. Gemma
 FOR METROWEST ENGINEERING, INC. DATE
 ROBERT A. GEMMA, P.E. # 31967 (CIVIL)
 P.L.S. # 37046



AS-BUILT ROAD PROFILE
 MICHAEL ROAD EXTENSION
 IN
 WAYLAND, MASS
 (MIDDLESEX COUNTY)

PREPARED FOR:
 BARBERRY HOMES, LLC
 10 SPEEN STREET, 4TH FLOOR
 FRAMINGHAM, MA 01701

PROPERTY OF:
 BARBERRY HOMES, LLC
 10 SPEEN STREET, 4TH FLOOR
 FRAMINGHAM, MA 01701

ENGINEERS & SURVEYORS:
MWE METROWEST ENGINEERING, INC.
 75 FRANKLIN STREET
 FRAMINGHAM, MA 01702
 TEL.: (508)626-0063
 FAX.: (508)875-6440

SHEET 2 OF 2 DATE: DECEMBER 10, 2020

CALC'D BY: RAG FIELD BK: 712,714 CAD FILE: FINAL AS-BUILT.dwg
 DRAFTER: CJC PROJECT: WY_MIC DWG FILE: