



TOWN OF WAYLAND

WAYLAND CoA  
COMMUNITY CENTER  
8 ANDREW AVENUE,  
WAYLAND, MA 01778



ARCHITECTURE ■ BOSTON  
PLANNING 529 MAIN STREET, SUITE 3303  
INTERIOR DESIGN BOSTON, MA 02129  
ENGINEERING TEL: 617.723.7100  
STRUCTURAL/CIVIL FAX: 617.723.9113

(R) The LiRo Group. All Rights Reserved

CONSULTANT:



MERIDIAN ASSOCIATES

500 CUMMINGS CENTER, SUITE 5950  
BEVERLY, MASSACHUSETTS 01915  
TELEPHONE: (978) 299-0447  
WWW.MERIDIANASSOC.COM

ISSUE/REVISION:

NO.	DATE	DESCRIPTION
A	09/28/2023	ISSUED FOR BID

KEY PLAN:



DRAWING TITLE:  
LANDSCAPE PLAN

DRAWN BY:

DSK

CHECKED BY:

DSK

SCALE:

1"=30'

PROJECT NO.:

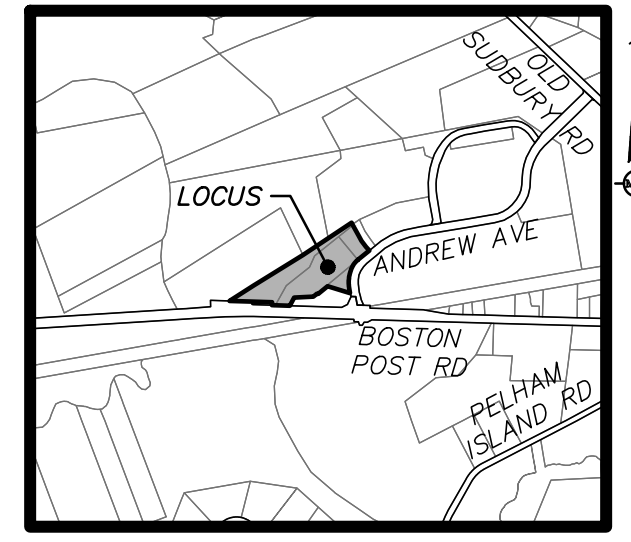
MAI#6452

DRAWING NO.:

L 1.0

PROJECT LOCATION:  
FILED: 82 Andrew Ave., Wayland, MA 01778 3/16/23 12:26:53 AM

DATE & TIME PRINTED: 9/28/2023 12:26:53 AM



LOCUS MAP:  
(NOT TO SCALE)

QTY	SYM	BOTANICAL NAME	COMMON NAME	SIZE	SPACING	
<b>TREES: 34</b>						
1	AS	Acer Saccharum	Sugar Maple	2-2.5"	REFER TO LANDSCAPE PLAN FOR LAYOUT AND SPACING	
2	BN	Betula nigra 'Dura-Heat'	'Dura-Heat' River Birch	10-12' Ht. Clump		
7	CC	Cercis canadensis	Eastern Redbud	2-2.5"		
13	CF	Cornus florida 'Cherokee Brave'	'Cherokee Brave' Dogwood	2-2.5"		
3	JV	Juniperus virginiana	Eastern Red Cedar	10-12' Ht.		
3	MS	Malus sargentii	Sargent Crabapple	2-2.5"		
4	PG	Picea glauca	White Spruce	10-12' Ht.		
1	QC	Quercus coccinea	Scarlet Oak	2-2.5"		
<b>SHRUBS: 102</b>						
7	ARB	Azalea 'Rosebud'	Rosebud Azalea	3 gallon		4-FT OC
11	AE	Azalea Encore 'Autumn Amethyst'	'Autumn Amethyst' Azalea	3 gallon	4-FT OC	
15	BGG	Buxus macrophylla 'Green Gem'	Green Gem Boxwood	3 gallon	3-FT OC	
31	IG	Ilex glabra 'Shamrock'	'Shamrock' Inkberry	7 gallon	4-FT OC	
6	KL	Kalmia latifolia	Mountain Laurel	3-4' B&B	5-FT OC	
18	MP	Myrica pensylvanica	Northern Bayberry	5 gallon	6-FT OC	
4	RCW	Rhododendron 'Cunningham's White'	Cunningham's White Rhodo.	5 gallon	3-FT OC	
9	RR	Rhododendron maximum 'Roseum'	Pink Rosebay Rhododendron	3-4' B&B	6-FT OC	
1	VSS	Viburnum plicatum toment. 'Summer Snowflake'	Summer Snowflake Viburnum	10 gallon	6-FT OC	
<b>PERENNIALS, GRASSES, &amp; GROUNDCOVERS</b>						
15	AT	Asclepias tuberosa	Butterfly Weed	1 quart	18" OC	
18	RA	Rhus aromatica 'Gro-low'	'Gro-low' Sumac	2 gallon	48" OC	
12	BT	Baptisia tricolora	Yellow Wild Indigo	1 quart	12" OC	
6	PA	Pennisetum alopecuroides 'Hamein'	Dwarf Fountain Grass	1 gallon	24" OC	
49	SS	Schizachyrium 'Standing Ovation'	Upright Little Bluestem	1 gallon	24" OC	
23	VM	Vinca minor 'Bowles'	Bowles Periwinkle	4" pot	6" OC	

**TREE REMOVAL QUANTITIES:**

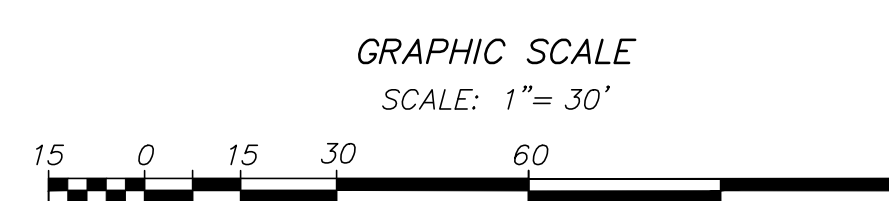
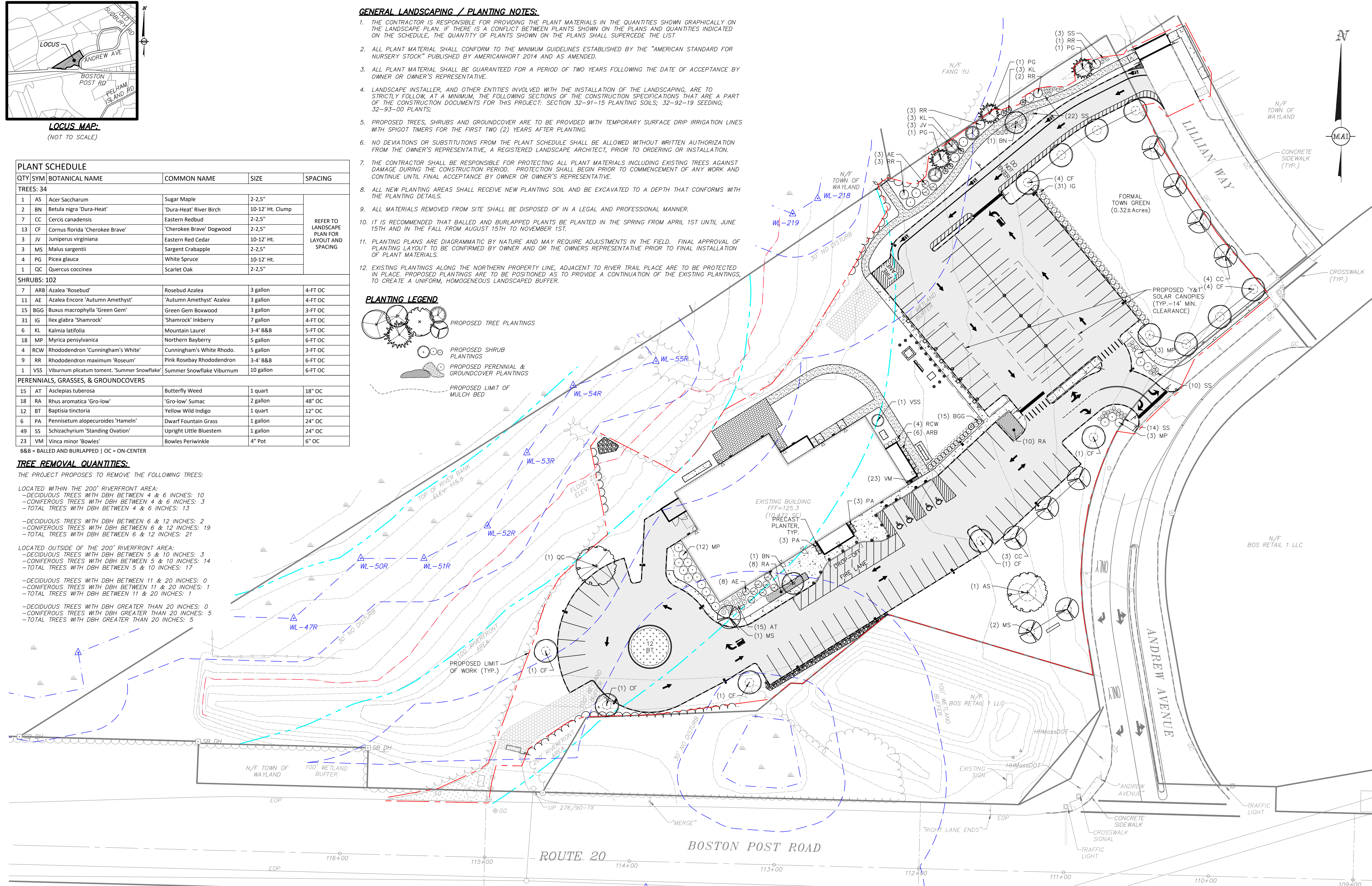
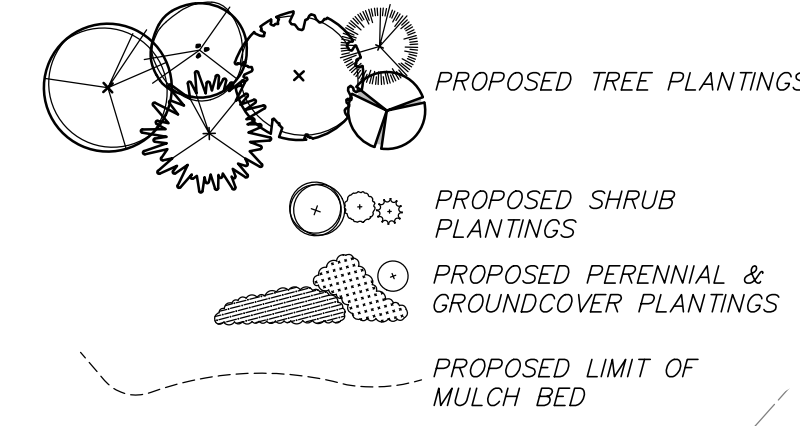
THE PROJECT PROPOSES TO REMOVE THE FOLLOWING TREES:

- LOCATED WITHIN THE 200' RIVERFRONT AREA:
- DECIDUOUS TREES WITH DBH BETWEEN 4 & 6 INCHES: 10
  - CONIFEROUS TREES WITH DBH BETWEEN 4 & 6 INCHES: 3
  - TOTAL TREES WITH DBH BETWEEN 4 & 6 INCHES: 13
  - DECIDUOUS TREES WITH DBH BETWEEN 6 & 12 INCHES: 2
  - CONIFEROUS TREES WITH DBH BETWEEN 6 & 12 INCHES: 19
  - TOTAL TREES WITH DBH BETWEEN 6 & 12 INCHES: 21
- LOCATED OUTSIDE OF THE 200' RIVERFRONT AREA:
- DECIDUOUS TREES WITH DBH BETWEEN 11 & 20 INCHES: 3
  - CONIFEROUS TREES WITH DBH BETWEEN 5 & 10 INCHES: 14
  - TOTAL TREES WITH DBH BETWEEN 5 & 10 INCHES: 17
  - DECIDUOUS TREES WITH DBH BETWEEN 11 & 20 INCHES: 0
  - CONIFEROUS TREES WITH DBH BETWEEN 11 & 20 INCHES: 1
  - TOTAL TREES WITH DBH BETWEEN 11 & 20 INCHES: 1
  - DECIDUOUS TREES WITH DBH GREATER THAN 20 INCHES: 0
  - CONIFEROUS TREES WITH DBH GREATER THAN 20 INCHES: 5
  - TOTAL TREES WITH DBH GREATER THAN 20 INCHES: 5

**GENERAL LANDSCAPING / PLANTING NOTES:**

- THE CONTRACTOR IS RESPONSIBLE FOR PROVIDING THE PLANT MATERIALS IN THE QUANTITIES SHOWN GRAPHICALLY ON THE LANDSCAPE PLAN. IF THERE IS A CONFLICT BETWEEN PLANTS SHOWN ON THE PLANS AND QUANTITIES INDICATED ON THE SCHEDULE, THE QUANTITY OF PLANTS SHOWN ON THE PLANS SHALL SUPERCEDE THE LIST.
- ALL PLANT MATERIAL SHALL CONFORM TO THE MINIMUM GUIDELINES ESTABLISHED BY THE "AMERICAN STANDARD FOR NURSERY STOCK" PUBLISHED BY AMERICANHORT 2014 AND AS AMENDED.
- ALL PLANT MATERIAL SHALL BE GUARANTEED FOR A PERIOD OF TWO YEARS FOLLOWING THE DATE OF ACCEPTANCE BY OWNER OR OWNER'S REPRESENTATIVE.
- LANDSCAPE INSTALLER, AND OTHER ENTITIES INVOLVED WITH THE INSTALLATION OF THE LANDSCAPING, ARE TO STRICTLY FOLLOW, AT A MINIMUM, THE FOLLOWING SECTIONS OF THE CONSTRUCTION SPECIFICATIONS THAT ARE A PART OF THE CONSTRUCTION DOCUMENTS FOR THIS PROJECT: SECTION 32-91-15 PLANTING SOILS; 32-92-19 SEEDING; 32-93-00 PLANTS;
- PROPOSED TREES, SHRUBS AND GROUNDCOVER ARE TO BE PROVIDED WITH TEMPORARY SURFACE DRIP IRRIGATION LINES WITH SPOOT TIMERS FOR THE FIRST TWO (2) YEARS AFTER PLANTING.
- NO DEVIATIONS OR SUBSTITUTIONS FROM THE PLANT SCHEDULE SHALL BE ALLOWED WITHOUT WRITTEN AUTHORIZATION FROM THE OWNER'S REPRESENTATIVE, A REGISTERED LANDSCAPE ARCHITECT, PRIOR TO ORDERING OR INSTALLATION.
- THE CONTRACTOR SHALL BE RESPONSIBLE FOR PROTECTING ALL PLANT MATERIALS INCLUDING EXISTING TREES AGAINST DAMAGE DURING THE CONSTRUCTION PERIOD. PROTECTION SHALL BEGIN PRIOR TO COMMENCEMENT OF ANY WORK AND CONTINUE UNTIL FINAL ACCEPTANCE BY OWNER OR OWNER'S REPRESENTATIVE.
- ALL NEW PLANTING AREAS SHALL RECEIVE NEW PLANTING SOIL AND BE EXCAVATED TO A DEPTH THAT CONFORMS WITH THE PLANTING DETAILS.
- ALL MATERIALS REMOVED FROM SITE SHALL BE DISPOSED OF IN A LEGAL AND PROFESSIONAL MANNER.
- IT IS RECOMMENDED THAT BALLED AND BURLAPPED PLANTS BE PLANTED IN THE SPRING FROM APRIL 1ST UNTIL JUNE 15TH AND IN THE FALL FROM AUGUST 15TH TO NOVEMBER 15TH.
- PLANTING PLANS ARE DIAGRAMMATIC BY NATURE AND MAY REQUIRE ADJUSTMENTS IN THE FIELD. FINAL APPROVAL OF PLANTING LAYOUT TO BE CONFIRMED BY OWNER AND/OR THE OWNER'S REPRESENTATIVE PRIOR TO FINAL INSTALLATION OF PLANT MATERIALS.
- EXISTING PLANTINGS ALONG THE NORTHERN PROPERTY LINE, ADJACENT TO RIVER TRAIL PLACE ARE TO BE PROTECTED IN PLACE. PROPOSED PLANTINGS ARE TO BE POSITIONED AS TO PROVIDE A CONTINUATION OF THE EXISTING PLANTINGS TO CREATE A UNIFORM, HOMOGENEOUS LANDSCAPED BUFFER.

**PLANTING LEGEND**



REFER TO SHEET LG 1.0 FOR  
GENERAL NOTES & LEGEND

ALL UNDERGROUND UTILITY DATA REPRESENTS RECORD  
INFORMATION RECOVERED THROUGH RESEARCH WITHOUT  
SURFACE DEMARCATON NOR SUBSURFACE VERIFICATION





TOWN OF WAYLAND

WAYLAND CoA  
COMMUNITY CENTER  
8 ANDREW AVENUE,  
WAYLAND, MA 01778



ARCHITECTURE ■ BOSTON  
PLANNING 529 MAIN STREET, SUITE 3303  
INTERIOR DESIGN BOSTON, MA 02129  
ENGINEERING TEL: 617.723.7100  
STRUCTURAL/CIVIL FAX: 617.723.9113

(R) The LiRo Group. All Rights Reserved

CONSULTANT:



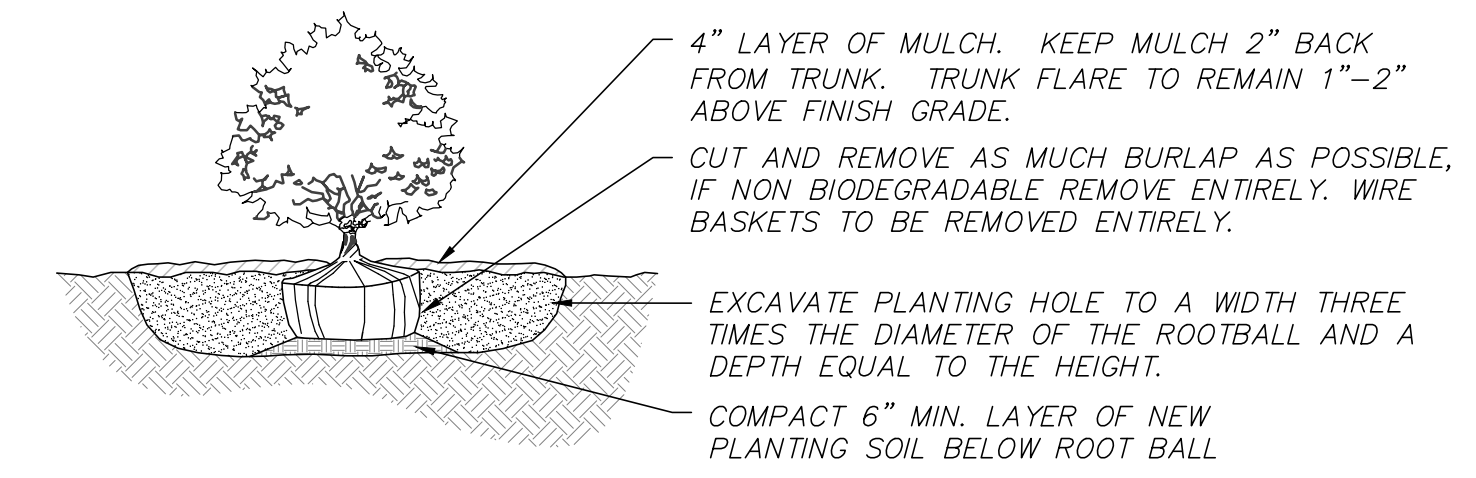
MERIDIAN ASSOCIATES

500 CUMMINGS CENTER, SUITE 5950  
BEVERLY, MASSACHUSETTS 01915  
TELEPHONE: (978) 299-0447  
WWW.MERIDIANASSOC.COM

ISSUE/REVISION:

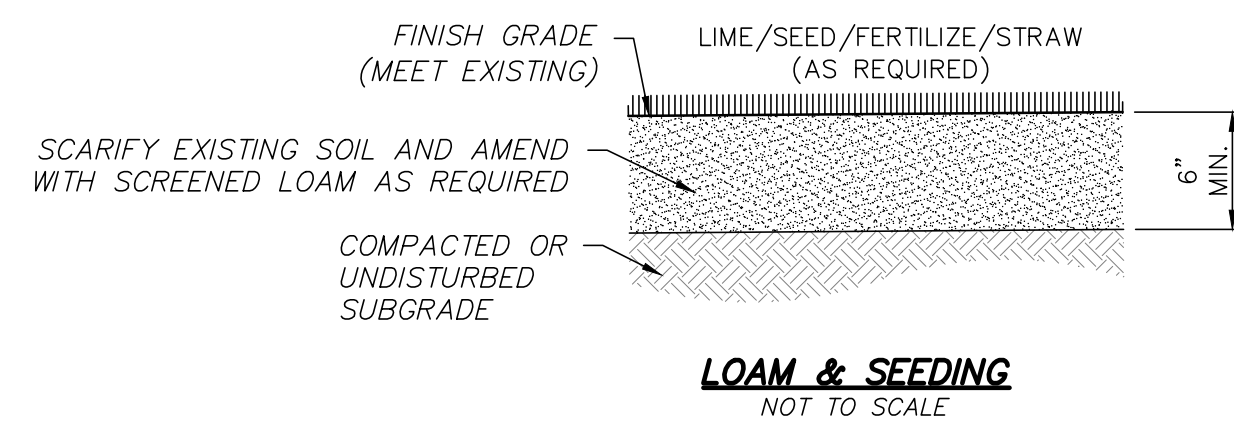
NO.	DATE	DESCRIPTION
A	09/28/2023	ISSUED FOR BID

KEY PLAN:

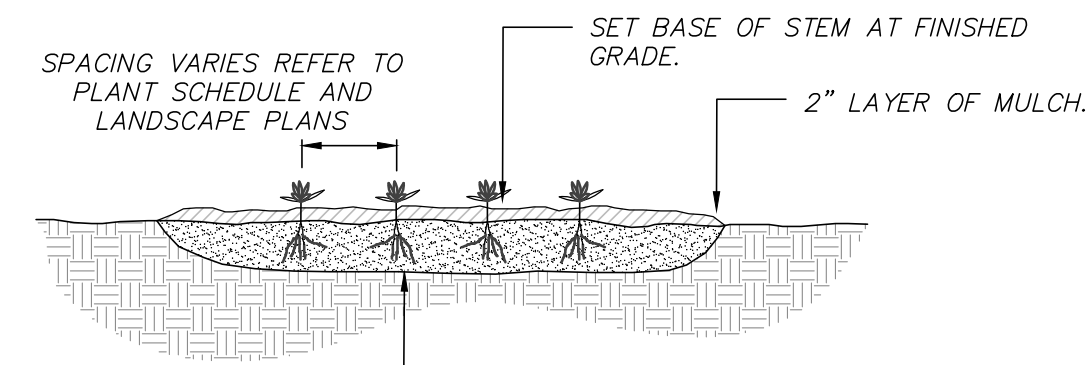


- NOTES:
- BACKFILL PLANTING HOLE WITH NEW PLANTING SOIL.
  - BACKFILL HALF THE SOIL AND WATER TO SETTLE OUT AIR POCKETS, COMPLETE BACKFILLING AND REPEAT WATERING.
  - IF ROOTS ARE CIRCLING THE ROOTBALL EXTERIOR, CUT ROOTS VERTICALLY IN SEVERAL PLACES PRIOR TO PLANTING.
  - REFER TO LANDSCAPE PLAN FOR LAYOUT AND SPACING.

SHRUB PLANTING  
(NOT TO SCALE)

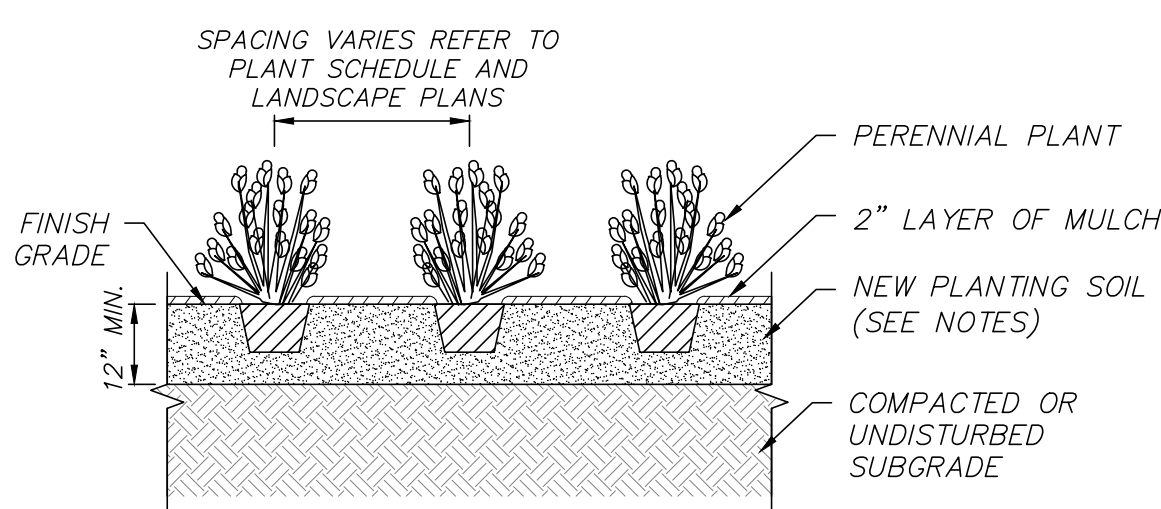


LOAM & SEEDING  
(NOT TO SCALE)



- NOTES:
- SEE LANDSCAPE NOTES FOR ADDITIONAL PLANTING REQUIREMENTS.
  - SPACE PLANTS EQUALLY TO PROVIDE CONSISTENT COVER OVER INDICATED PLANTING BED.
  - ALL ROOT BALLS TO BE SCARIFIED PRIOR TO BACKFILLING.

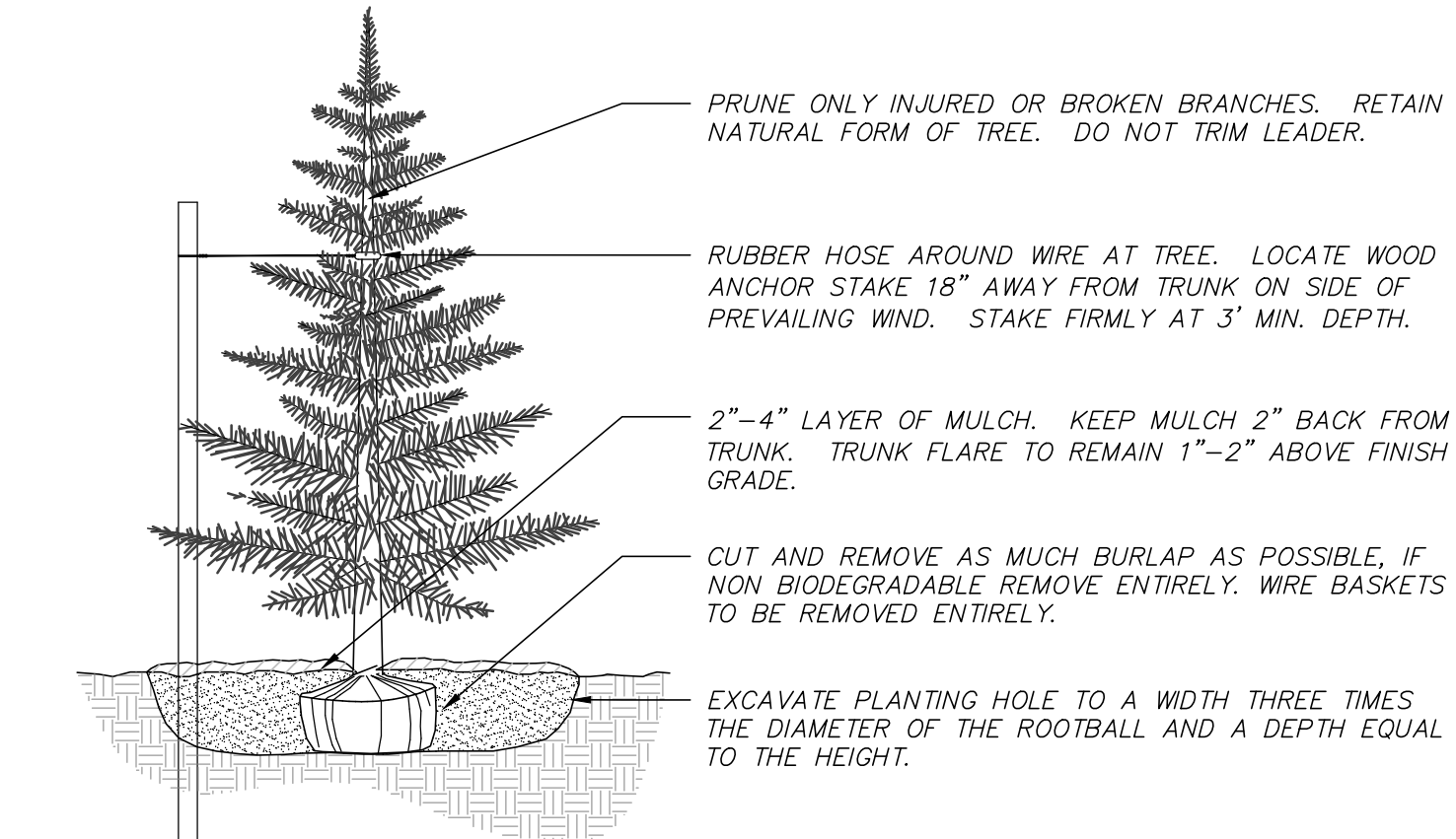
GROUNDCOVER PLANTING  
(NOT TO SCALE)



- NOTES:
- SEE LANDSCAPE NOTES FOR ADDITIONAL PLANTING REQUIREMENTS.
  - SPACE PLANTS EQUALLY TO PROVIDE CONSISTENT COVER OVER INDICATED PLANTING BED.
  - ALL ROOT BALLS TO BE SCARIFIED PRIOR TO BACKFILLING.

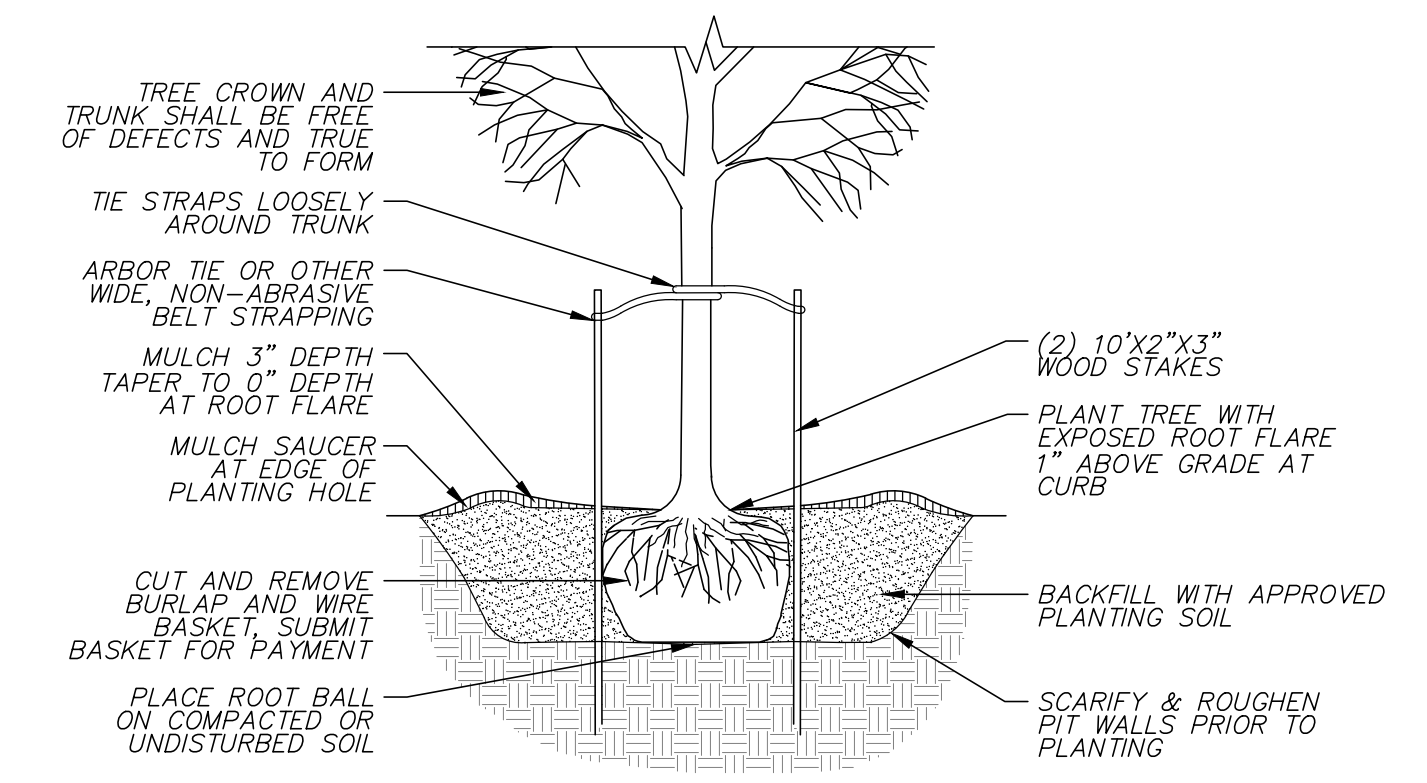
GROUNDCOVER / ANNUAL / PERENNIAL PLANTING  
(NOT TO SCALE)

NOTE:  
CONSTRUCTION IS TO MEET OR EXCEED TOWN OF WAYLAND DPW SPECIFICATIONS AND REQUIREMENTS.



- NOTES:
- BACKFILL PLANTING HOLE WITH EXISTING SOIL AMENDED AS NECESSARY.
  - BACKFILL HALF THE SOIL AND WATER TO SETTLE OUT AIR POCKETS, COMPLETE BACKFILLING AND REPEAT WATERING.
  - IF ROOTS ARE CIRCLING THE ROOTBALL EXTERIOR, CUT ROOTS VERTICALLY IN SEVERAL PLACES PRIOR TO PLANTING.
  - ONLY STAKE TREES SITUATED ON WINDY SITES OR EXPOSED TO SUBSTANTIAL PEDESTRIAN TRAFFIC.
  - REFER TO LANDSCAPE PLAN FOR LAYOUT AND SPACING.

EVERGREEN TREE PLANTING  
(NOT TO SCALE)



- NOTES:
- REFER TO LANDSCAPE PLAN FOR LAYOUT AND SPACING.

TREE PLANTING  
(NOT TO SCALE)