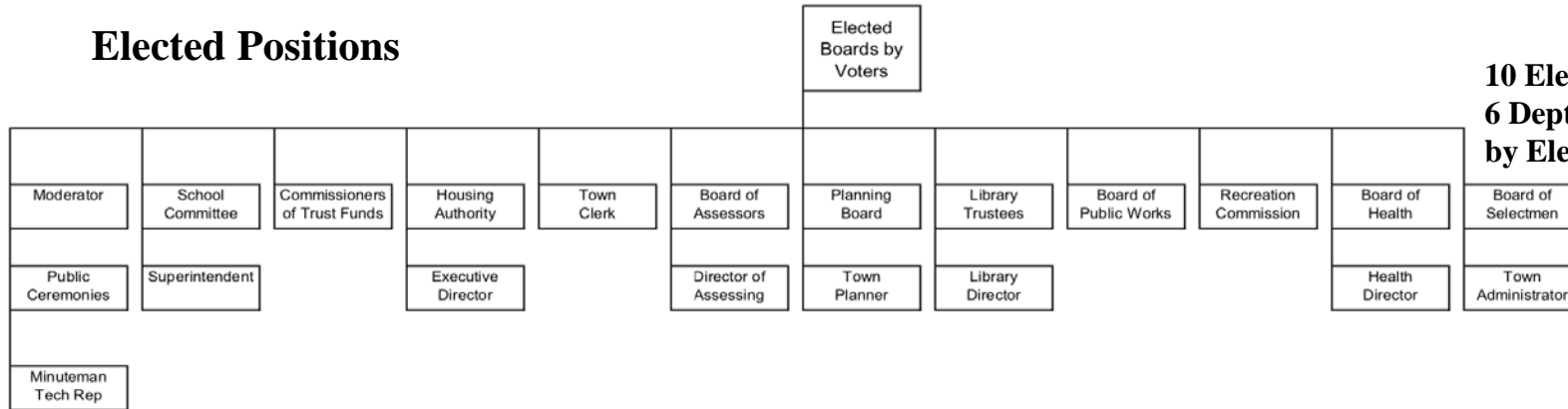




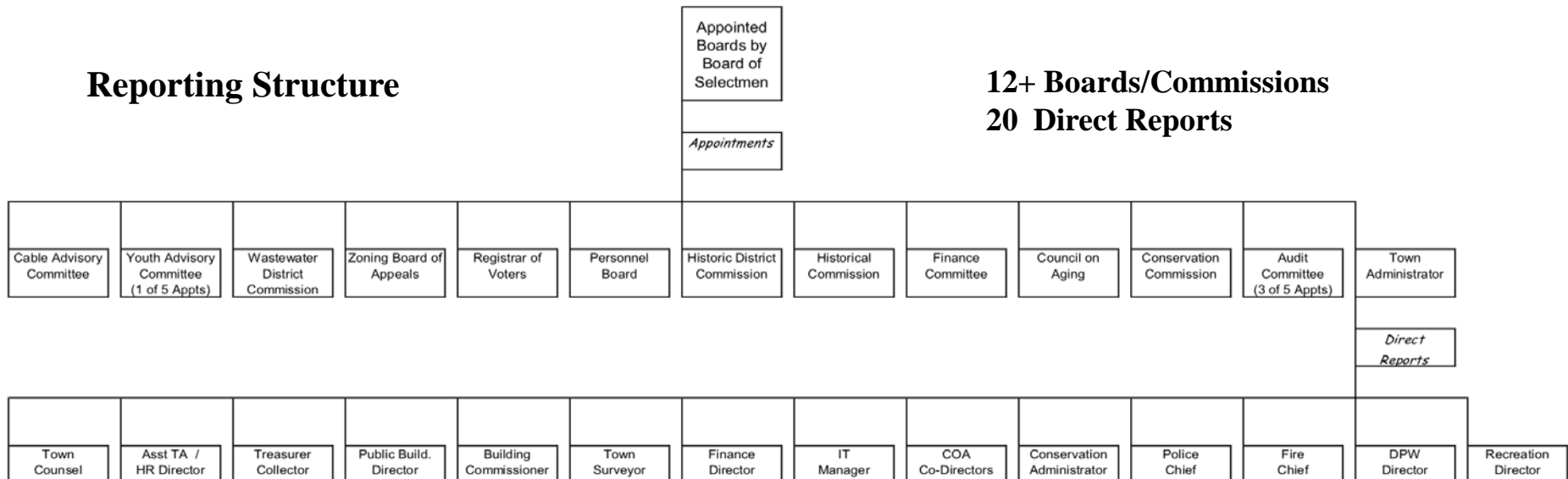
# Town of Wayland Massachusetts

## Elected Positions



**10 Elected Boards;  
6 Dept Heads Appointed  
by Elected Boards**

## Reporting Structure

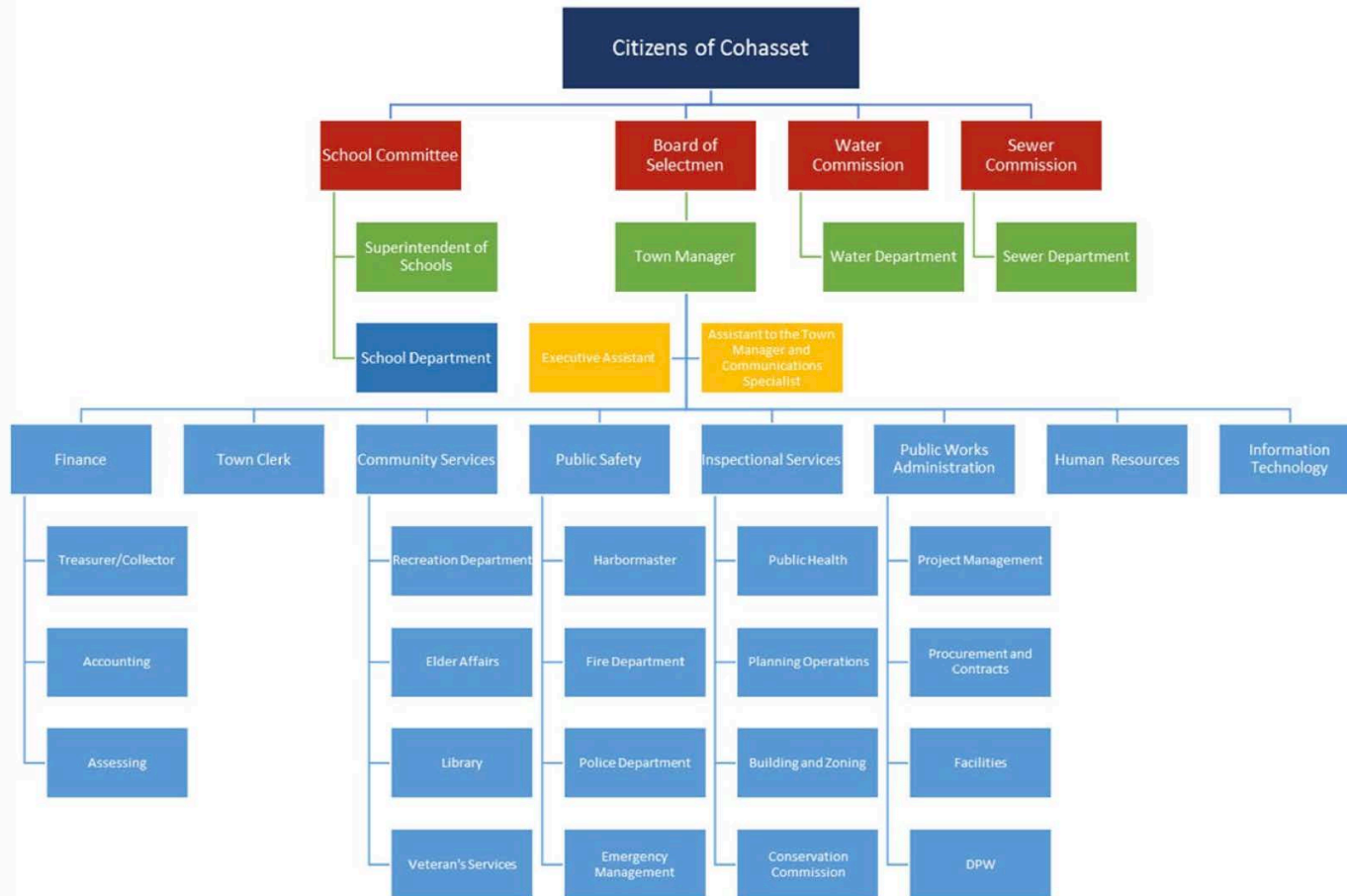


**12+ Boards/Commissions  
20 Direct Reports**



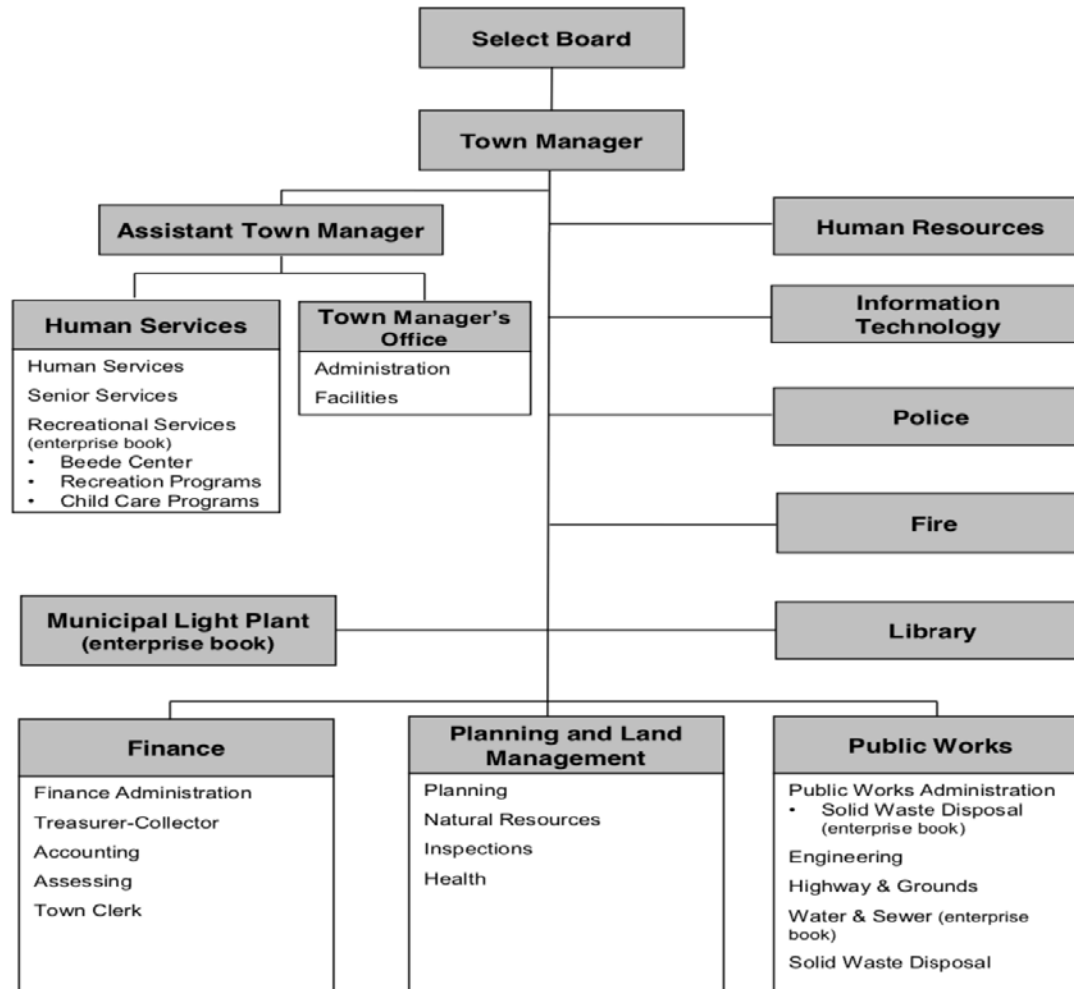
# Town of Wayland Massachusetts

*EXAMPLE*



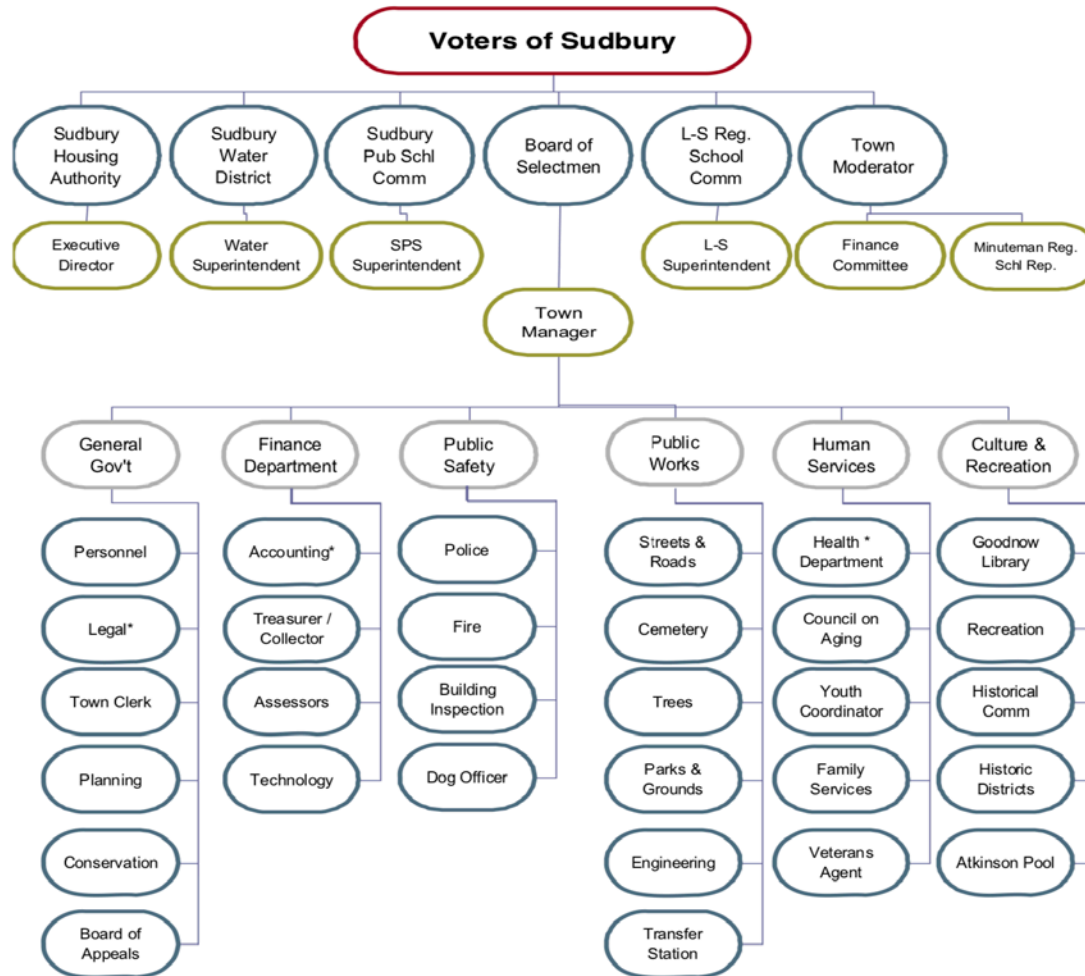


### Town of Concord, Massachusetts Organization Chart





### Organizational Chart of the Town of Sudbury





## Town of Weston – Organizational Chart

