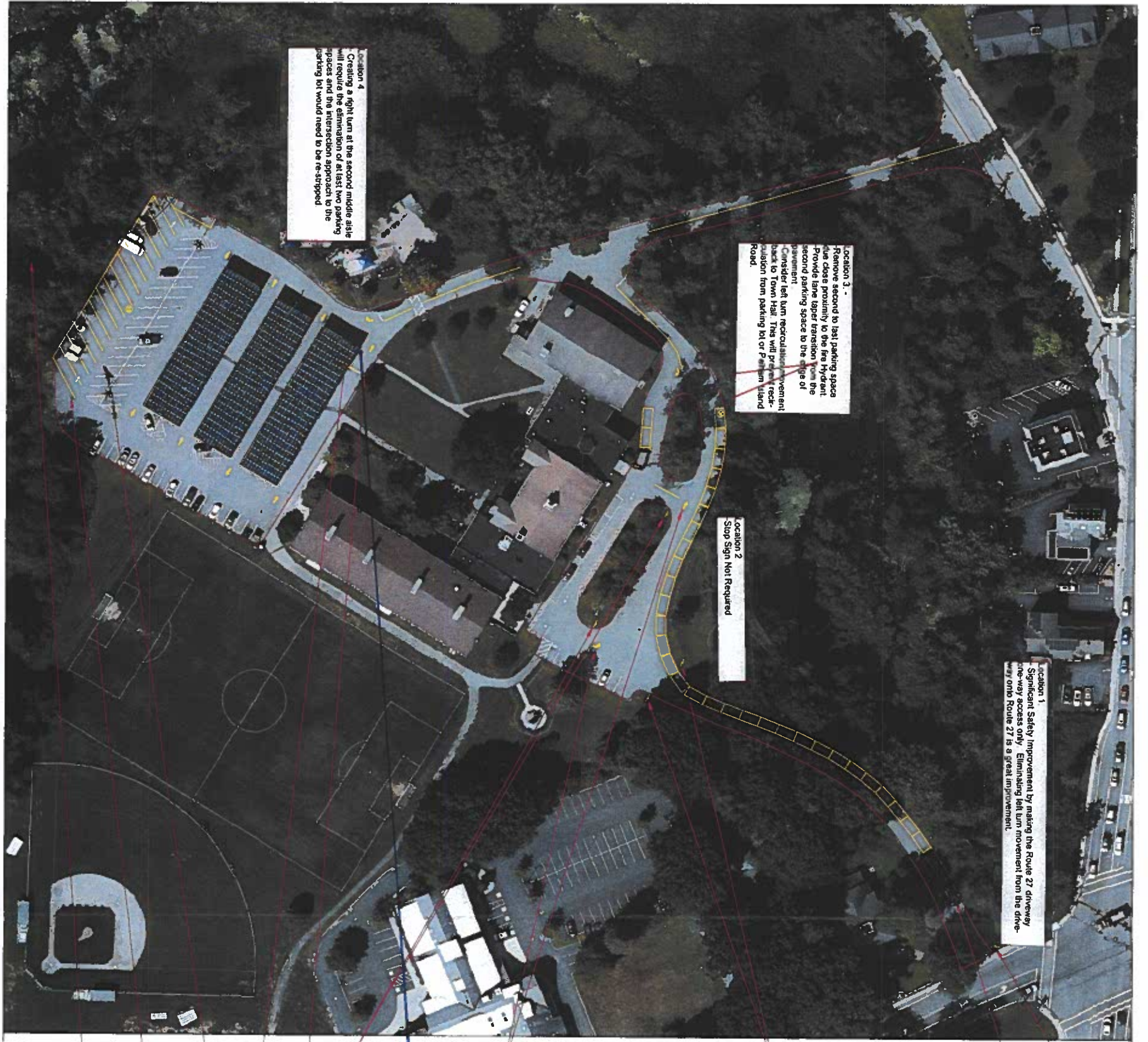


Location 1 -
 Significant Safety Improvement by making the Route 27 driveway one-way. Access by eliminating left turn movement from the driveway onto Route 27 is a great improvement.

Location 3 -
 Remove second to last parking space due close proximity to the fire hydrant. Provide lane taper transition from the second parking space to the edge of pavement. Consider left turn recirculation pavement back to Town Hall. This will provide truck-rotation from parking lot or Pegasus Island Road.

Location 2 -
 Stop Sign Not Required

Location 4 -
 Creating a right turn at the second middle aisle will require the elimination of at least two parking spaces and the intersection approach to the parking lot would need to be re-stripped



PROPOSED "ONE WAY" ARROW SIGN

PROPOSED 31 TYPICAL PARKING SPACES

PROPOSED "DO NOT ENTER"/"ONE WAY" SIGNS

PROPOSED PAINTED TRAFFIC ARROWS

1 VAN.HC.

PROPOSED "ONE WAY" ARROW SIGNS

PROPOSED EXTEND STOP LINE ACROSS ENTIRE LANE

PROPOSED CHANGE ONE PARKING STALL INTO A VAN ACCESSIBLE HANDICAP PARKING

PROPOSED REMOVAL OF 16 PARKING SPACES AND PAVEMENT MARKINGS

PROPOSED REMOVAL OF 20 PARKING SPACES AND PAVEMENT MARKINGS TO BE REPLACED WITH 19 BUS PARKING SPACES

WETLANDS 100' BUFFER

- General Notes
- 1) TYPICAL PARKING SPACE DIMENSIONS ARE 9' X 18'
 - 2) SLANTED BUS PARKING SPACE DIMENSIONS ARE 10.7' X 42.5' AT 30 DEGREE ANGLE
 - 3) STRAIGHT BUS PARKING SPACE DIMENSION IS 10' X 40'
 - 4) PARKING SPACES THAT ARE TO BE REMOVED SHALL HAVE THEIR STRIPING REMOVED FROM THE PAVEMENT

No.	Revision/issue	Date

Town of
Weyland
 Massachusetts
 Department of Public Works
 REGISTERED SURVEYOR

TOWN HALL
 PROPOSED PARKING
 LOT LAYOUT
 Weyland, Massachusetts

Project: TOWN HALL PARKING LOT
 Date: **10-22-2011**
 Scale: 1" = 40'