



23-001

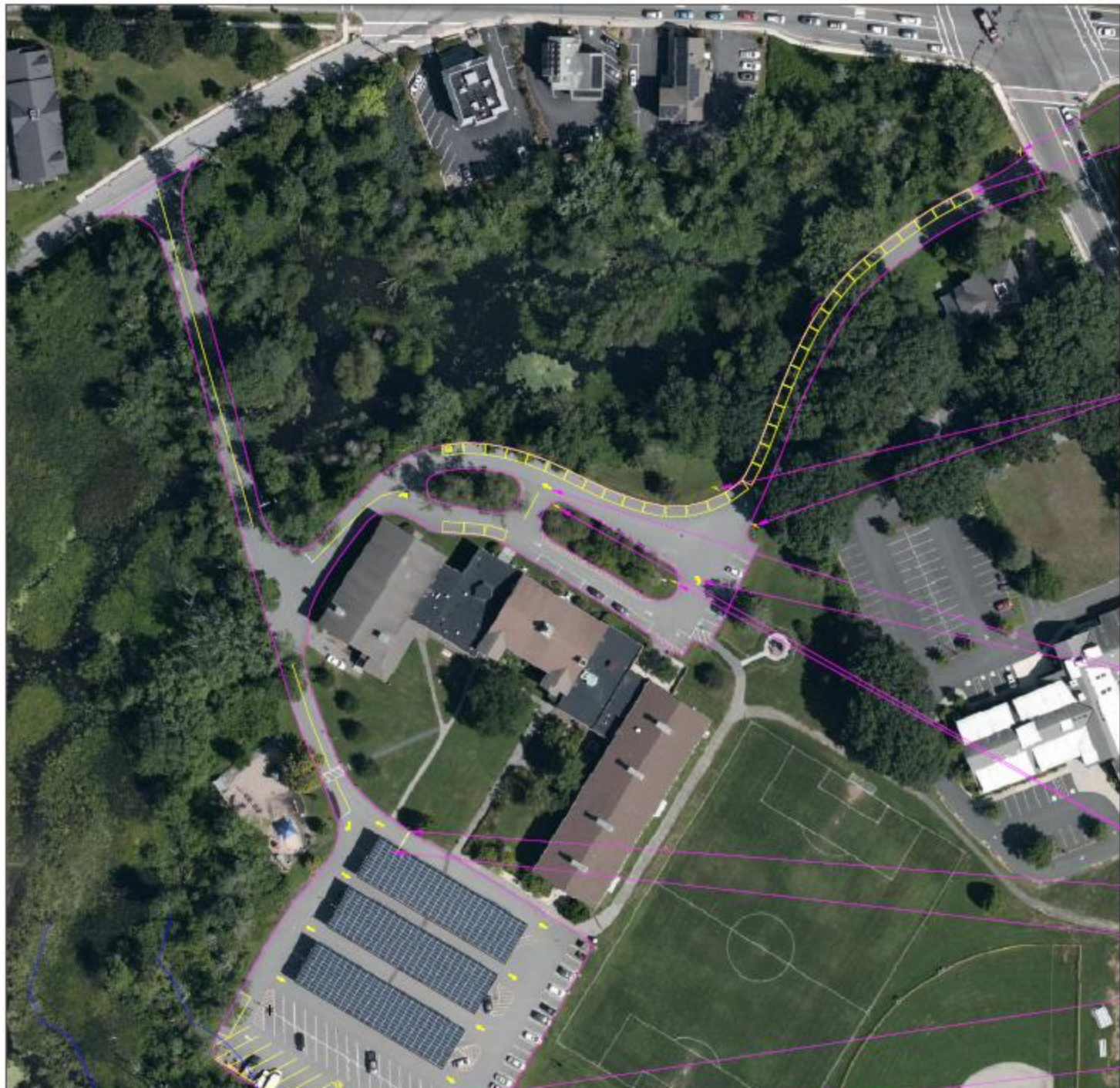
#41





# Article 6 Site Plan Approval

- The restriping and directional flow of parking does not meet the thresholds and criteria of the applicability to require Site Plan Approval (see section 601.2)
- **601.2.4.** For the purpose of this Article 6, "substantial alteration to areas of parking, loading or vehicular access" shall mean any proposal where all or part of such existing or proposed areas is located off the site of the primary use or structure; or where any resurfacing of such areas results in any change in the design of the septic or drainage systems on or for the site; or where any curb cut is relocated, added or otherwise changed; or where this Zoning Bylaw requires more parking than was required for the previous use;



PROPOSED "ONE WAY" ARROW SIGN

PROPOSED 42 TYPICAL PARKING SPACES

PROPOSED "DO NOT ENTER"/"ONE WAY" SIGNS

PROPOSED PAINTED TRAFFIC ARROWS

PROPOSED "ONE WAY" ARROW SIGNS

PROPOSED EXTEND STOP LINE ACROSS ENTIRE LANE

PROPOSED CHANGE ONE PARKING STALL INTO A VAN ACCESSIBLE HANDICAP PARKING

PROPOSED REMOVAL OF 32 PARKING SPACES AND PAVEMENT MARKINGS

PROPOSED REMOVAL OF 20 PARKING SPACES AND PAVEMENT MARKINGS

AutoCAD SHX Text  
 PROPOSED "DO NOT ENTER"/"ONE WAY"

**General Notes**

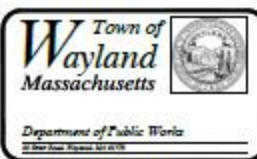
- 1.) TYPICAL PARKING SPACE DIMENSIONS ARE 9' X 18'
- 2.) SLANTED BUS PARKING SPACE DIMENSIONS ARE 10.7' X 42.0' AT 30 DEGREE ANGLE
- 3.) STRAIGHT BUS PARKING SPACE DIMENSION IS 10' X 40'
- 4.) PARKING SPACES THAT ARE TO BE REMOVED SHALL HAVE THEIR STRIPING REMOVED FROM THE PAVEMENT
- 5.) SUMMATION OF PARKING SPACES:

**REMOVE:**  
 52 PASSENGER VEHICLE SPACES

**ADD:**  
 38 PASSENGER VEHICLE SPACES  
 15 SLANTED BUS SPACES  
 1 STRAIGHT BUS SPACE

**NET:**  
 16 LOSS PASSENGER VEHICLE SPACES  
 16 GAINED BUS SPACES

No.	Revised/Issue	Date



**TOWN HALL  
 PROPOSED PARKING  
 LOT LAYOUT  
 Wayland, Massachusetts**



