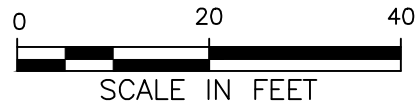
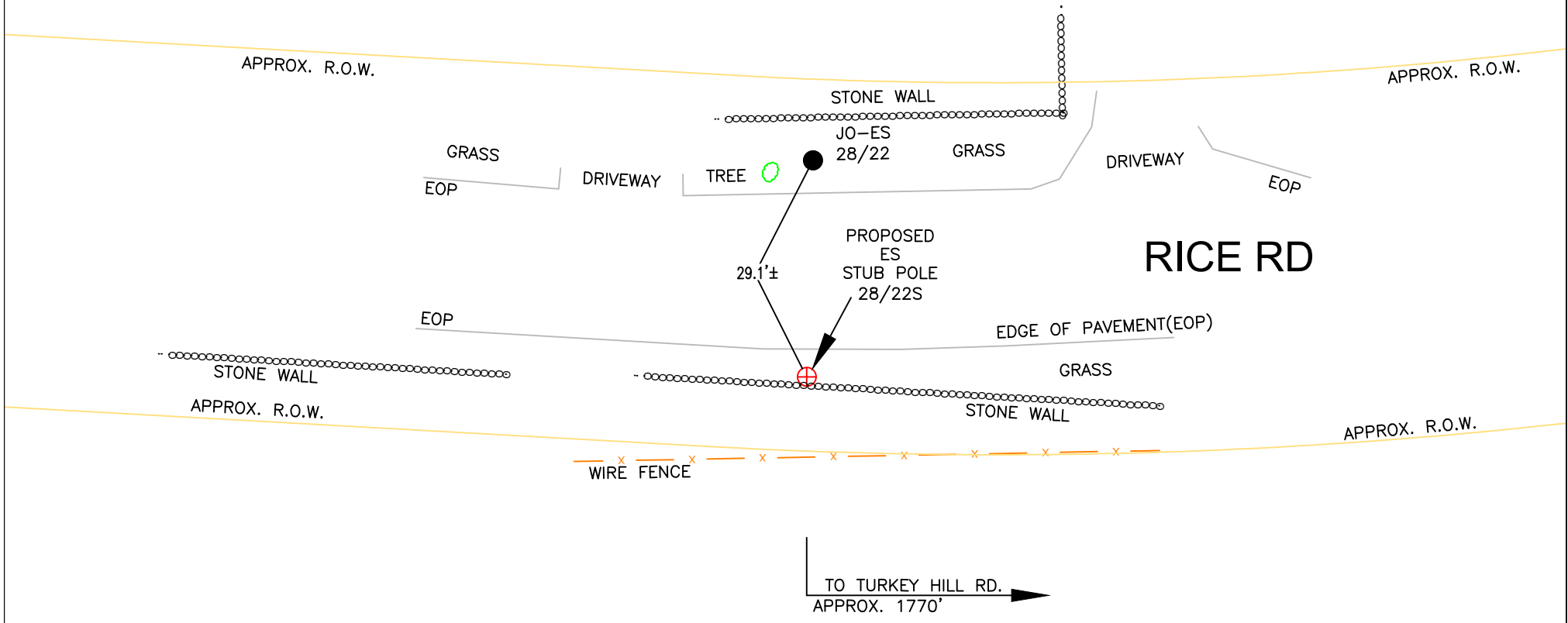
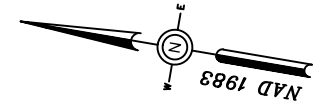


#209



PURPOSE: TO PROVIDE ADDITIONAL SUPPORT TO EXISTING POLE 28/22 (EXISTING TREE GUY TO BE REMOVED)

BY YOUR USE OF THE INFORMATION CONTAINED IN THIS MAP, YOU AGREE THAT NO WARRANTY OF ANY KIND, EXPRESS OR IMPLIED, IS GIVEN WITH RESPECT TO THE INFORMATION. NEITHER NSTAR ELECTRIC COMPANY, NSTAR GAS COMPANY NOR ITS PARENTS, AFFILIATES, OFFICERS, DIRECTORS, SHAREHOLDERS, EMPLOYEES OR AGENTS (COLLECTIVELY THE "NSTAR ENTITIES") SHALL BE LIABLE FOR ANY LOSS OR INJURY CAUSED IN WHOLE OR IN PART BY USE OF THIS INFORMATION OR IN RELIANCE UPON IT. TO THE MAXIMUM EXTENT ALLOWED BY LAW, YOU AGREE BY YOUR ACCEPTANCE OF THE INFORMATION TO RELEASE, INDEMNIFY AND HOLD THE NSTAR ENTITIES HARMLESS FROM ANY SUCH LOSS OR INJURY.

THE INFORMATION MAY NOT REPRESENT A SURVEY, MAY NOT BE THE MOST COMPLETE AND IS SUBJECT TO CHANGE WITHOUT NOTICE. NO LIABILITY IS ASSUMED FOR THE ACCURACY OF THE INFORMATION, EITHER EXPRESSED OR IMPLIED. UNAUTHORIZED ATTEMPTS TO MODIFY THE INFORMATION OR USE THE INFORMATION FOR OTHER THAN ITS INTENDED PURPOSES ARE PROHIBITED

Proposed pole locations shown thus	⊕	C#	
Pole locations to be abandoned, shown thus	○	Ward #	
Proposed Anchor Guy shown thus	T	Work Order # 2380891	
Proposed Hip Guy shown thus	T _H	Surveyed by: SC/JC	
Proposed Underground location shown thus	—	Research by: JC	
Proposed Push Brace shown thus	⊕	Plotted by: JF	
Existing Pole location shown thus	●	Proposed Structures: TL	
		Approved: A DEBENEDICTIS	
		P#	

EVERSOURCE

1165 MASSACHUSETTS AVE. DORCHESTER, MASS. 02125

Plan of RICE RD., WAYLAND

Showing PROPOSED STUB POLE LOCATION

Scale 1"=20' Date MARCH 25, 2020

SHEET 1 of 1