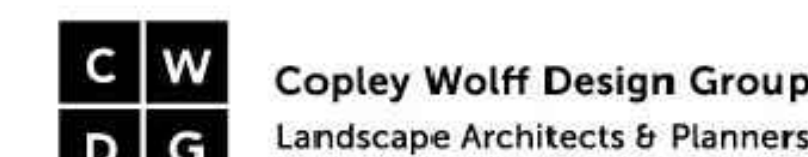


Consultant:



Revision:

Architect of Record:

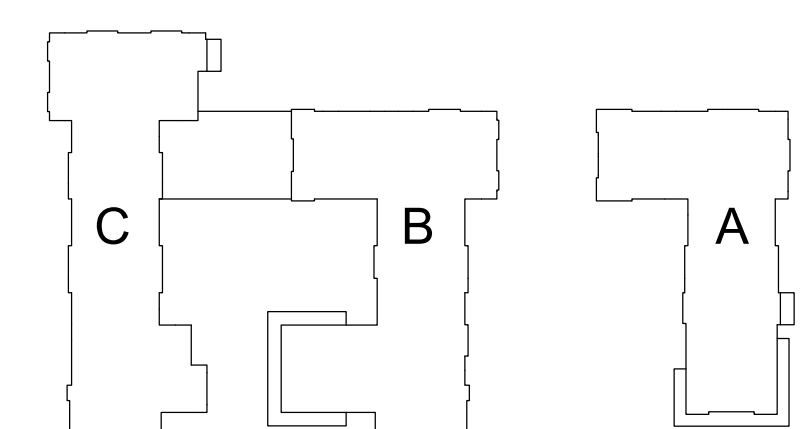


Drawn: SAS

Checked: AA

Scale: 1" = 20'-0"

Key Plan:



Project Name:

**ALTA AT RIVER'S
EDGE**

490, 492, 494 BOSTON
POST RD
WAYLAND, MA 01778

Sheet Name:

**Planting Plan:
Enlargement 1**

Project Number:

15151.00

Issue Date:

SEPTEMBER 23, 2020

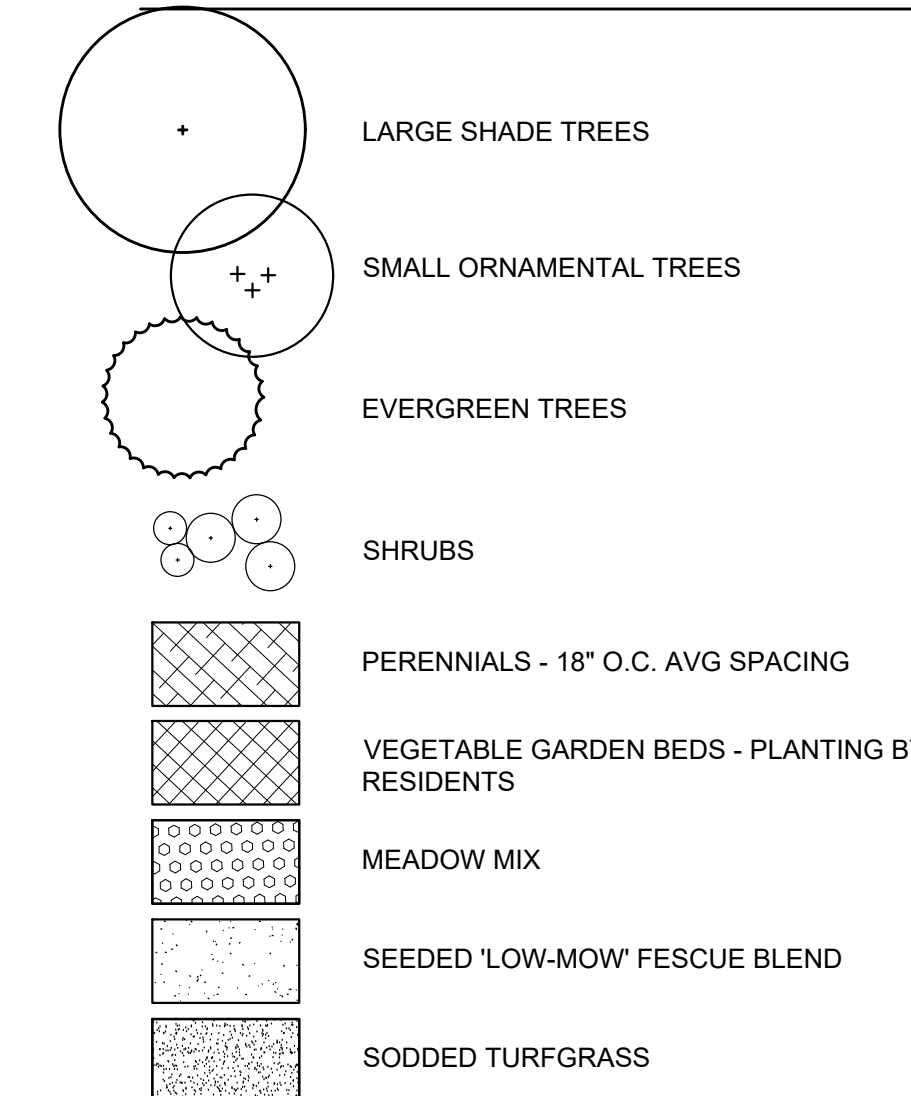
Sheet Number:

L 2.01

PLANT LIST: ENLARGEMENT 1

Symbol	Qty	Botanical Name	Common Name	Size	MBOT Spread	Root Size	Comments
Shrubs and Groundcover							
AAT	94	<i>Azalea atlanticum</i>	Coastal Azalea	36-42" ht.	2'-6"	#3 Cont.	
AMA	10	<i>Aronia melanocarpa 'Autumn Magic'</i>	Autumn Magic Black Chokeberry	30-42" ht.	4'-7"	#3 Cont.	
CAH	17	<i>Clethra alnifolia 'Hummingbird'</i>	Hummingbird Sweet Pepperbush	24-30" ht.	3'-5"	#3 Cont.	
CAR	75	<i>Clethra alnifolia 'Ruby Spice'</i>	Ruby Spice Sweet Pepperbush	30-36" ht.	3'-5"	#3 Cont.	
CSI	120	<i>Cornus sericea 'Isant'</i>	Red Twig Dogwood	36-42" ht.	4'-7"	#3 Cont.	
DLO	189	<i>Diervilla lonicera</i>	Northern Bush Honeysuckle	18-24" ht.	2'-4"	#2 Cont.	
FGA	87	<i>Fothergilla gardenii 'Appalachia'</i>	Appalachia Dwarf Fothergilla	24-36" ht.	2'-4"	#3 Cont.	
HAA	33	<i>Hydrangea arborescens 'Annabelle'</i>	Annabelle Smooth Hydrangea	24-30" ht.	4'-6"	#3 Cont.	
HQS	33	<i>Hydrangea quercifolia 'Snow Queen'</i>	Snow Queen Oak Leaf Hydrangea	30-42" ht.	6'-8"	#3 Cont.	
IGD	121	<i>Ilex glabra 'Densa'</i>	Dense Holly	36-42" ht.	5'-8"	#3 Cont.	
IL	44	<i>Itea virginiana 'Little Henry'</i>	Little Henry Virginia Sweetspire	18-24" spd.	2'-2.5"	#2 Cont.	
IVR	133	<i>Ilex verticillata 'Red Sprite'</i>	Red Sprite Winterberry	24-32" ht.	2.5-3'	#3 Cont.	
JCB	71	<i>Juniperus communis 'Berkshire'</i>	Berkshire Common Juniper	24-36" spd.	1'-2"	#3 Cont.	
JHB	79	<i>Juniperus horizontalis 'Bar Harbor'</i>	Bar Harbor Creeping Juniper	24-36" spd.	5'-6"	#3 Cont.	
MGA	62	<i>Myrica gale</i>	Sweetgale	18-24" spd.	5'-10"	#2 Cont.	
MPE	22	<i>Myrica pensylvanica</i>	Northern Bayberry	36-48" ht.	5'-10"	#5 Cont.	
RAG	68	<i>Rhus aromatica 'Gro Low'</i>	Gro Low Fragrant Sumac	18-24" spd.	6'-8"	#2 Cont.	
RCA	9	<i>Rhododendron catawbinse 'Album'</i>	Catawaba Rhododendron	18-24" ht.	5'-6"	#3 Cont.	
RMA	29	<i>Rhododendron maximum</i>	Great Laurel	48-52" ht.	5'-12"	#5 Cont.	
RTY	24	<i>Rhus typhina</i>	Staghorn Sumac	42-52" ht.	20-30'	#5 Cont.	
TCA	51	<i>Taxus canadensis</i>	Canada Fir	30-42" ht.	25-35'	#3 Cont.	
VAC	40	<i>Viburnum acerifolium</i>	Nepis Leaf Viburnum	30-42" ht.	2'-4"	#3 Cont.	
VAN	85	<i>Vaccinium angustifolium</i>	Low Bush Blueberry	18-24" spd.	1'-2"	#2 Cont.	
VDA	84	<i>Viburnum dentatum 'Autumn Jazz'</i>	Autumn Jazz Arrowwood	36-48" ht.	8-12'	#3 Cont.	
VDB	5	<i>Viburnum dentatum 'Blue Muffin'</i>	Blue Muffin Arrowwood	30-42" ht.	3'-4"	#3 Cont.	
VTI	19	<i>Viburnum trilobum</i>	American Cranberrybush	42-42" ht.	8-12'	#5 Cont.	
Perennials / Ornamental Grasses / Vines							
ADE	208	<i>Astilbe chinensis 'Deutschland'</i>	Deutschland Astilbe	#1 Cont.			
AVP	208	<i>Astilbe 'Visions in Pink'</i>	Visions in Pink Astilbe	#1 Cont.			
AVR	208	<i>Astilbe 'Visions in Red'</i>	Visions in Red Astilbe	#1 Cont.			
BAU	117	<i>Baptisia australis</i>	Blue False Indigo	#1 Cont.			
DEX	208	<i>Dicentra eximia</i>	Fringed Bleeding Heart	#1 Cont.			
TCM	51	<i>Taxus canadensis</i>	Canada Fir	30-42" ht.	25-35'	#3 Cont.	
EPK	117	<i>Echinacea purpurea 'Kim's Knee High'</i>	Kim's Knee High Purple Coneflower	#1 Cont.			
HAI	252	<i>Hyloblephium 'Herbsteude' Autumn Joy</i>	Autumn Joy Stonecrop	#1 Cont.			
HSO	117	<i>Hemerocallis 'Stella D'Oro'</i>	Stella D'Oro Daylily	#1 Cont.			
LSB	325	<i>Leucanthemum x superbum 'Becky'</i>	Becky Shasta Daisy	#1 Cont.			
NWL	252	<i>Nepeta x fassenii 'Walkers Low'</i>	Walkers Low Catmint	#1 Cont.			
POD	208	<i>Polygonatum odoratum</i>	Solomon's Seal	#1 Cont.			

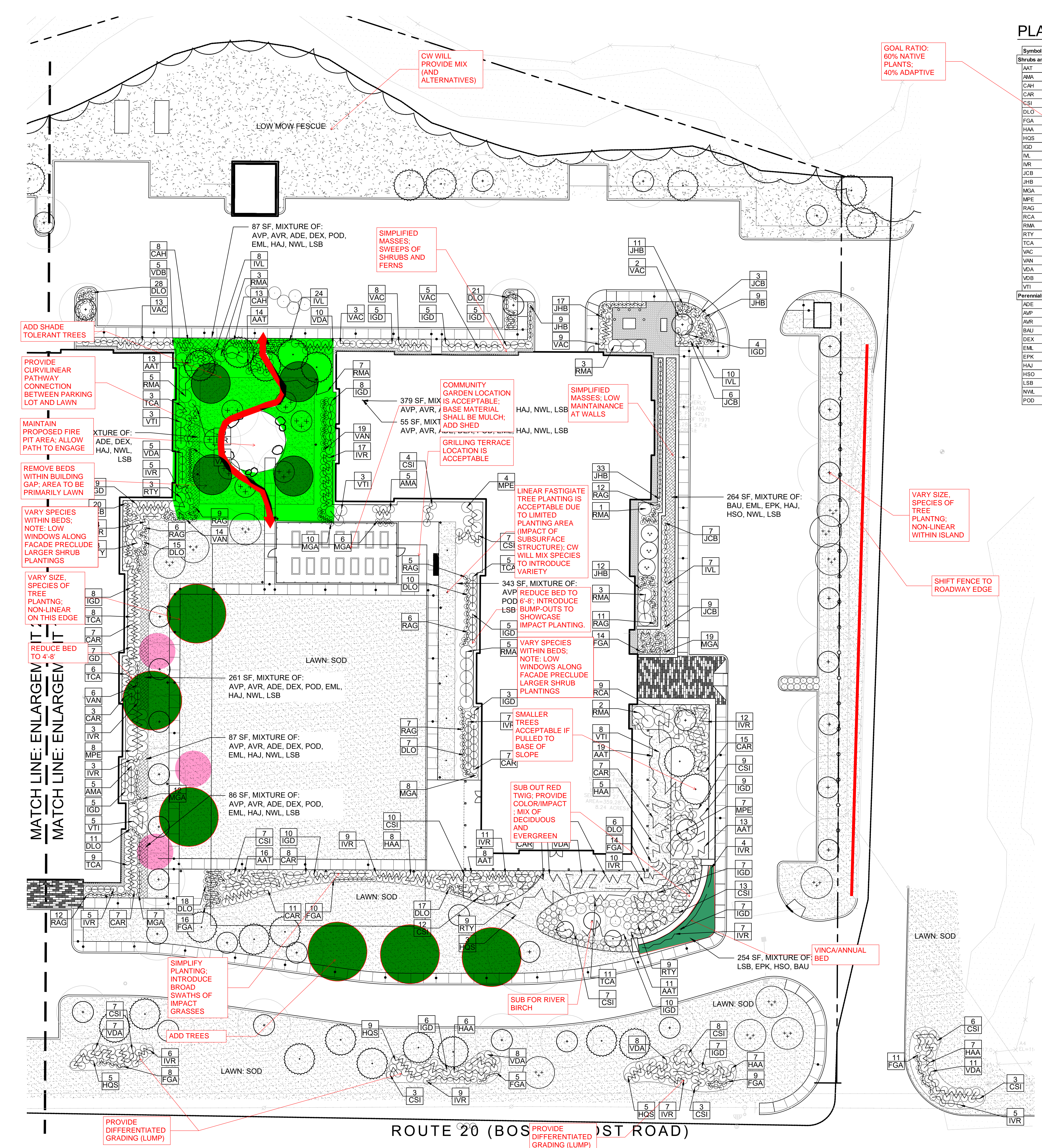
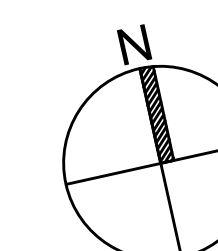
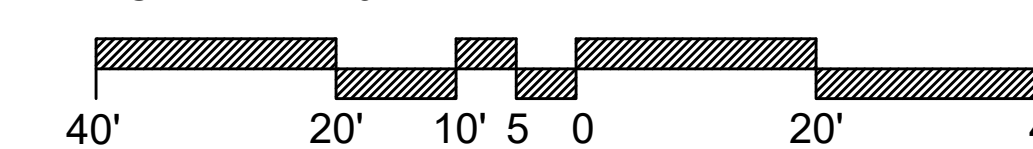
PLANTING LEGEND



NOTES:

- See sheet L-2.00 for general planting notes.
- Perennial plant selection is schematic for pricing and species and quantity are subject to change.

SCALE: 1"=20'



MATCH LINE: ENLARGEMENT 1

MATCH LINE: ENLARGEMENT 2

ADD SHADE TOLERANT TREES

PROVIDE CURVILINEAR PATHWAY CONNECTION BETWEEN PARKING LOT AND LAWN

MAINTAIN PROPOSED FIRE PIT AREA; ALLOW PATH TO ENGAGE

REMOVE BEDS WITHIN BUILDING GAP; AREA TO BE PRIMARILY LAWN

VARY SPECIES WITHIN BEDS; NOTE: LOW WINDOWS ALONG FACADE PRECLUDE LARGER SHRUB PLANTINGS

VARY SIZE SPECIES OF TREE PLANTING; NON-LINEAR ON THIS EDGE

REDUCE BED TO 4'-8"

SMALLER TREES ACCEPTABLE IF PULLED TO BASE OF SLOPE

SUB OUT RED TWIG; PROVIDE COLOR/IMPACT; MIX OF DECIDUOUS AND EVERGREEN

SIMPLIFY PLANTING; INTRODUCE BROAD SWATHS OF IMPACT GRASSES

ADD TREES

PROVIDE DIFFERENTIATED GRADING (LUMP)

SMALLER TREES ACCEPTABLE IF PULLED TO BASE OF SLOPE

SUB FOR RIVER BIRCH

PROVIDE DIFFERENTIATED GRADING (LUMP)

SMALLER TREES ACCEPTABLE IF PULLED TO BASE OF SLOPE

SMALLER TREES ACCEPTABLE IF PULLED TO BASE OF SLOPE

SMALLER TREES ACCEPTABLE IF PULLED TO BASE OF SLOPE

SMALLER TREES ACCEPTABLE IF PULLED TO BASE OF SLOPE

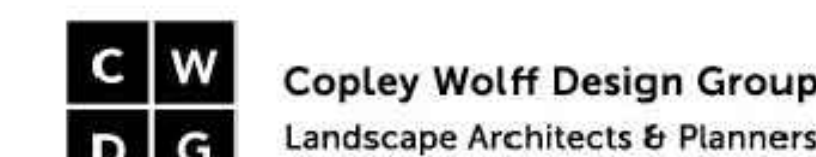
SMALLER TREES ACCEPTABLE IF PULLED TO BASE OF SLOPE

SMALLER TREES ACCEPTABLE IF PULLED TO BASE OF SLOPE

SMALLER TREES ACCEPTABLE IF PULLED TO BASE OF SLOPE

SMALLER TREES ACCEPTABLE IF PULLED TO BASE OF SLOPE

Consultant:



Revision:

Architect of Record:



Drawn: SAS

Checked: AA

Scale: 1" = 20'-0"

Key Plan:



Project Name:

**ALTA AT RIVER'S
EDGE**

490, 492, 494 BOSTON
POST RD
WAYLAND, MA 01778

Sheet Name:

**Planting Plan:
Enlargement 2**

Project Number:

15151.00

Issue Date:

SEPTEMBER 23, 2020

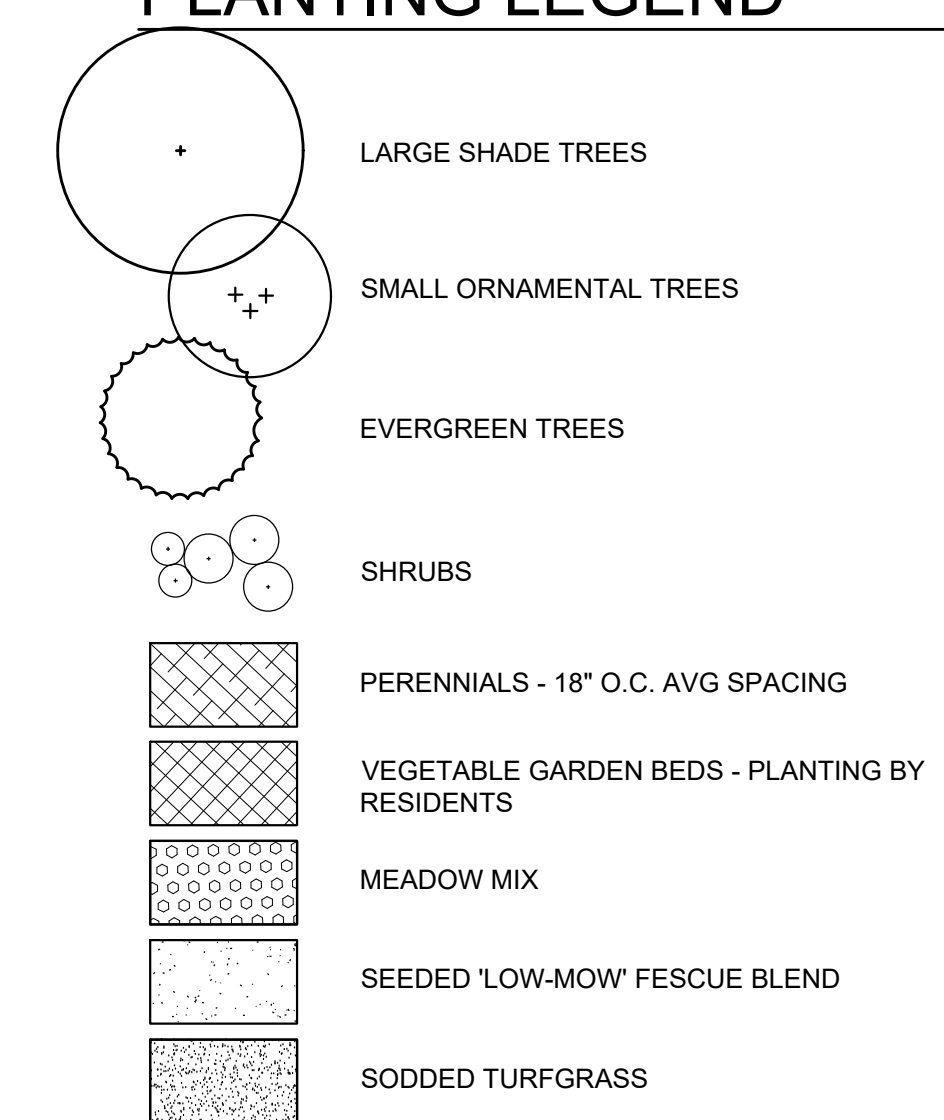
Sheet Number:

L 2.02

PLANT LIST: ENLARGEMENT 2

Symbol	Qty	Botanical Name	Common Name	Size	MBOT Spread	Root Size	Comments
Shrubs and Groundcover							
AMA	27	<i>Aronia melanocarpa</i> 'Autumn Magic'	Autumn Magic Black Chokeberry	30-42" ht.	4-7"	#3 Cont.	
CAR	54	<i>Clethra alnifolia</i> 'Ruby Spice'	Ruby Spice Sweet Pepperbush	30-36" ht.	3-5"	#3 Cont.	
CSI	19	<i>Cornus sericea</i> 'Teans'	Red Twig Dogwood	36-42" ht.	4-7"	#3 Cont.	
DLO	18	<i>Diervilla lonicera</i>	Northern Bush Honeysuckle	18-24" ht.	2-4"	#2 Cont.	
FGA	36	<i>Fothergilla gardenii</i> 'Appalachia'	Appalachia Dwarf Fothergilla	24-36" ht.	2-4"	#3 Cont.	
HAA	13	<i>Hydrangea arborescens</i> 'Annabelle'	Annabelle Smooth Hydrangea	24-30" ht.	4-6"	#3 Cont.	
HQS	9	<i>Hydrangea quercifolia</i> 'Snow Queen'	Snow Queen Oak Leaf Hydrangea	30-42" ht.	6-8"	#3 Cont.	
IGD	59	<i>Ilex glabra</i> 'Densa'	Dense Inberry	36-42" ht.	5-8"	#3 Cont.	
IVL	8	<i>Ilex virginiana</i> 'Little Henry'	Little Henry Virginia Sweetpire	18-24" spd.	2-2.5"	#2 Cont.	
IVR	9	<i>Ilex verticillata</i> 'Red Spirit'	Red Spirit Winterberry	24-32" ht.	2.5-3"	#3 Cont.	
JCB	53	<i>Juniperus communis</i> 'Berkshire'	Berkshire Common Juniper	24-36" spd.	1-2"	#3 Cont.	
JHB	28	<i>Juniperus horizontalis</i> 'Bar Harbor'	Bar Harbor Creeping Juniper	24-36" spd.	5-6"	#3 Cont.	
KLA	11	<i>Kalmia latifolia</i>	Mountain Laurel	36-48" ht.	5-15"	#5 Cont.	
MGA	147	<i>Myrica gale</i>	Sweetgale	18-24" spd.	5-10"	#2 Cont.	
MPE	10	<i>Myrica pensylvanica</i>	Northern Bayberry	36-48" ht.	5-10"	#5 Cont.	
RAG	92	<i>Rhus aromatica</i> 'Gro Low'	Grow Low Fragrant Sumac	18-24" spd.	6-8"	#2 Cont.	
RMA	7	<i>Rhododendron maximum</i>	Great Laurel	48-62" ht.	5-12"	#5 Cont.	
RTY	10	<i>Rhus typhina</i>	Staghorn Sumac	42-62" ht.	20-30"	#5 Cont.	
VAC	20	<i>Viburnum acerifolium</i>	Maple Leaf Viburnum	30-42" ht.	2-4"	#3 Cont.	
VAN	69	<i>Viburnum angustifolium</i>	Low Bush Blueberry	18-24" spd.	1-2"	#2 Cont.	
VDA	74	<i>Viburnum dentatum</i> 'Autumn Jazz'	Autumn Jazz Arrowwood	36-48" ht.	8-12"	#3 Cont.	
VDB	48	<i>Viburnum dentatum</i> 'Blue Muffin'	Blue Muffin Arrowwood	30-42" ht.	3-4"	#3 Cont.	
VTI	11	<i>Viburnum trilobum</i>	American Cranberrybush	42-42" ht.	8-12"	#5 Cont.	
Perennials / Ornamental Grasses / Vines							
ANA	399	<i>Aster novae-angliae</i>	New England Aster	#1 Cont.			
BAU	687	<i>Baptisia australis</i>	Blue False Indigo	#1 Cont.			
EPK	399	<i>Echinacea purpurea</i> 'Kim's Knee High'	Kim's Knee High Purple Coneflower	#1 Cont.			
HSO	189	<i>Hemerocallis</i> 'Stella D'Oro'	Stella D'Oro Daylily	#1 Cont.			
LSB	92	<i>Leucanthemum x superbum</i> 'Becky'	Becky Shasta Daisy	#1 Cont.			
LSK	251	<i>Liatis spicata</i> 'Kobold'	Dense Blazing Star	#1 Cont.			
NWL	735	<i>Nepeta x faassenii</i> 'Walkers Low'	Walkers Low Catmint	#1 Cont.			
PVS	747	<i>Panicum vergatum</i> 'Shenandoah'	Shenandoah Switch Grass	#1 Cont.			
RFG	309	<i>Rudbeckia fulgida</i> 'Goldsturm'	Goldsturm Black-Eyed-Susan	#1 Cont.			
SSB	904	<i>Schizachyrium scoparium</i> 'The Blues'	The Blues Little Bluestem	#1 Cont.			

PLANTING LEGEND



NOTES:

- See sheet L-2.00 for general planting notes.
- Perennial plant selection is schematic for pricing and species and quantity are subject to change.

SCALE: 1"=20'

