

Directions

Parking:

In the cul-de-sac near
49 Forty Acres Dr.
Wayland, MA 01778



About this Property

Pine Brook is a 31.4-acre Conservation area with fairly hilly trails. The loop trail is an easy to moderate walk totaling about 0.4 mi. For a longer walk, you can continue on the out-and-back trail totaling 1 mi.

Pine Brook is comprised of mature Eastern White Pine Forest and riverfront area associated with Pine Brook and Hayward Brook.

These two streams have been described by Mass Fish & Wildlife as the last remaining pristine cold water streams this far east in Massachusetts.

The coldwater streams are home to healthy populations of the native Eastern Brook Trout.



Male brook trout

The wetlands are home to green frogs, bullfrogs, and other amphibians, as well as Wood Ducks (cover photo), Mallards, and American Black Ducks.

Pine Brook

Open sunrise-sunset

Wayland Conservation Trail Map



Photo courtesy of Brian Harris

Prohibited Activities

no fire of any kind	no motorized vehicles	no drones	no hunting or trapping
no littering	no swimming	no smoking, drugs, or alcohol	

Things to Do

please stay on the trail	snowshoeing, skiing	please do not disturb wildlife	picnicking (pack in, pack out)

Dog walking rules:

- 3 dogs per person
- On leash or voice control at all times
- Clean up dog waste and keep to the trail
- Be aware of children and visitors with dogs

www.wayland.ma.us/conservation

@waylandconservation

(508)-358-3669

42°21'30"N

71°21'30"W



LEGEND

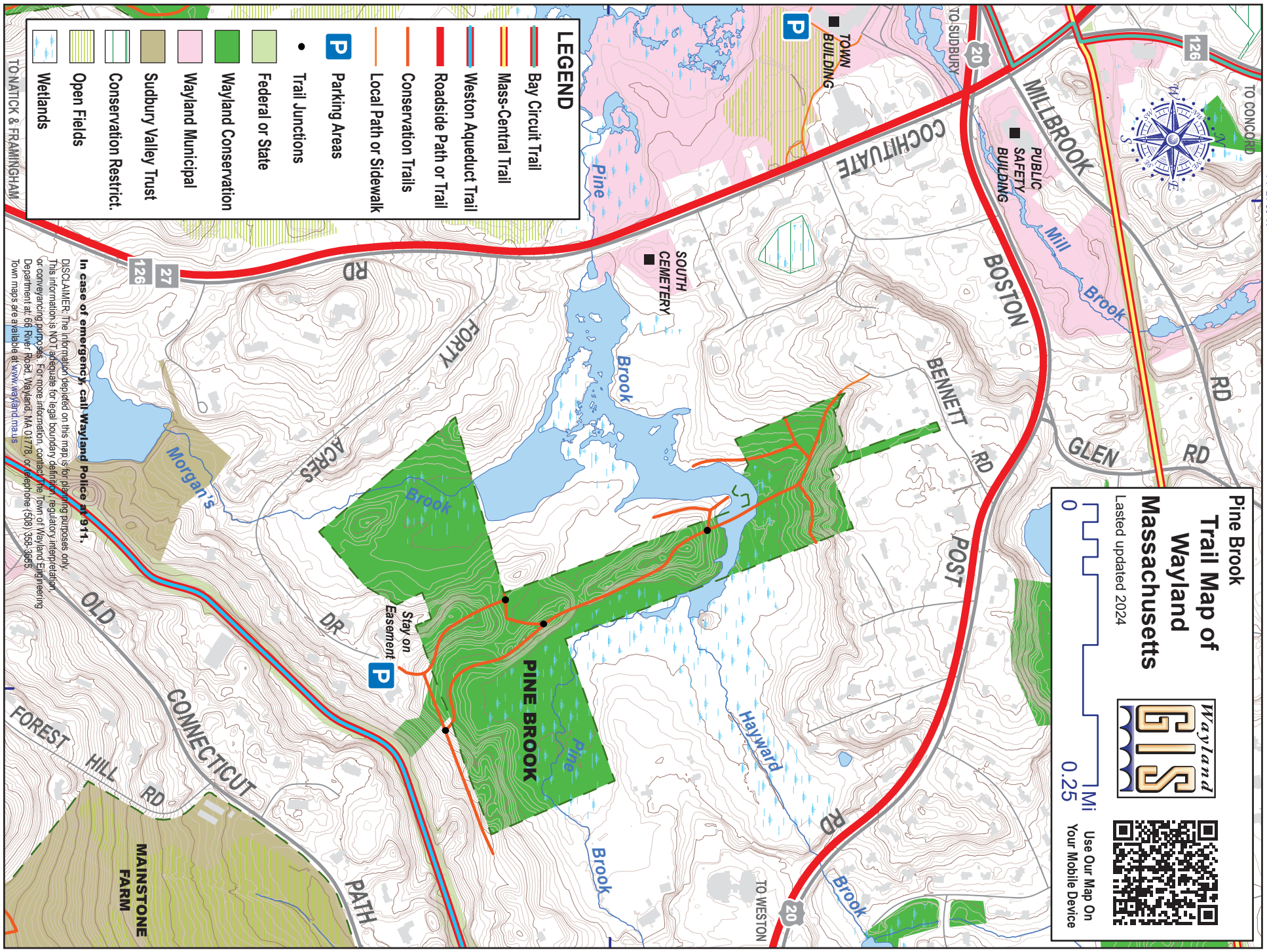
- Bay Circuit Trail
- Mass-Central Trail
- Weston Aqueduct Trail
- Roadside Path or Trail
- Conservation Trails
- Local Path or Sidewalk
- Parking Areas
- Trail Junctions
- Federal or State
- Wayland Conservation
- Wayland Municipal
- Sudbury Valley Trust
- Conservation Restrict.
- Open Fields
- Wetlands

Pine Brook Trail Map of Wayland Massachusetts

Last updated 2024

Use Our Map On Your Mobile Device

0 0.25 1 MI



42°21'30"N

71°21'10"W

In case of emergency, call Wayland Police at 911.

DISCLAIMER: The information provided on this map is for planning purposes only. This information is NOT adequate for legal boundary definition, regulatory interpretation, or conveying purposes. For more information, contact the Town of Wayland Engineering Department at 68 River Road, Wayland, MA 01778, or telephone (508) 358-3955. Town maps are available at www.wayland.ma.us