

Directions

Parking:

A small parking lot is located between 418 and 426 Old Conn Path.



Pod Meadow can also be reached by parking along Wallace Rd then following the aqueduct .17 miles. On the south side, you will see an opening in a chain link fence and a blaze orange trail marker noting the entrance that joins the rest of the trail system.

Prohibited Activities



Things to Do



Dog walking rules:

- 3 dogs per person
- On leash or voice control at all times
- Clean up dog waste and keep to the trail
- Be aware of children and visitors with dogs

About this Property

Pod Meadow is a 32-acre Conservation area with mixed deciduous and White Pine-forested trails. The trails are out-and-back and can total up to a mile walk.

The base of the property surrounding the 3 small ponds is a fairly easy 0.2 miles walk. However, the rest of the trail systems bring you to the bottom of the property and is a more strenuous down-then-uphill walk.

As you enter the trail from the parking area, you will notice the remains of a non-prescribed forest fire that burned up 5 acres. The fire took place on March 9th, 2016. Always practice fire safety when out on the trails!

Waterfowl can be found in the ponds seasonally.

Northern Rough-winged Swallows gather on the ponds in appreciable numbers before heading south.

American Beavers are active on property. Look for them at dawn and dusk when they are most active.

Pod Meadow

Open sunrise-sunset

Wayland Conservation Trail Map



www.wayland.ma.us/conservation

@waylandconservation

(508)-358-3669



Pod Meadow

Trail Map of Wayland Massachusetts

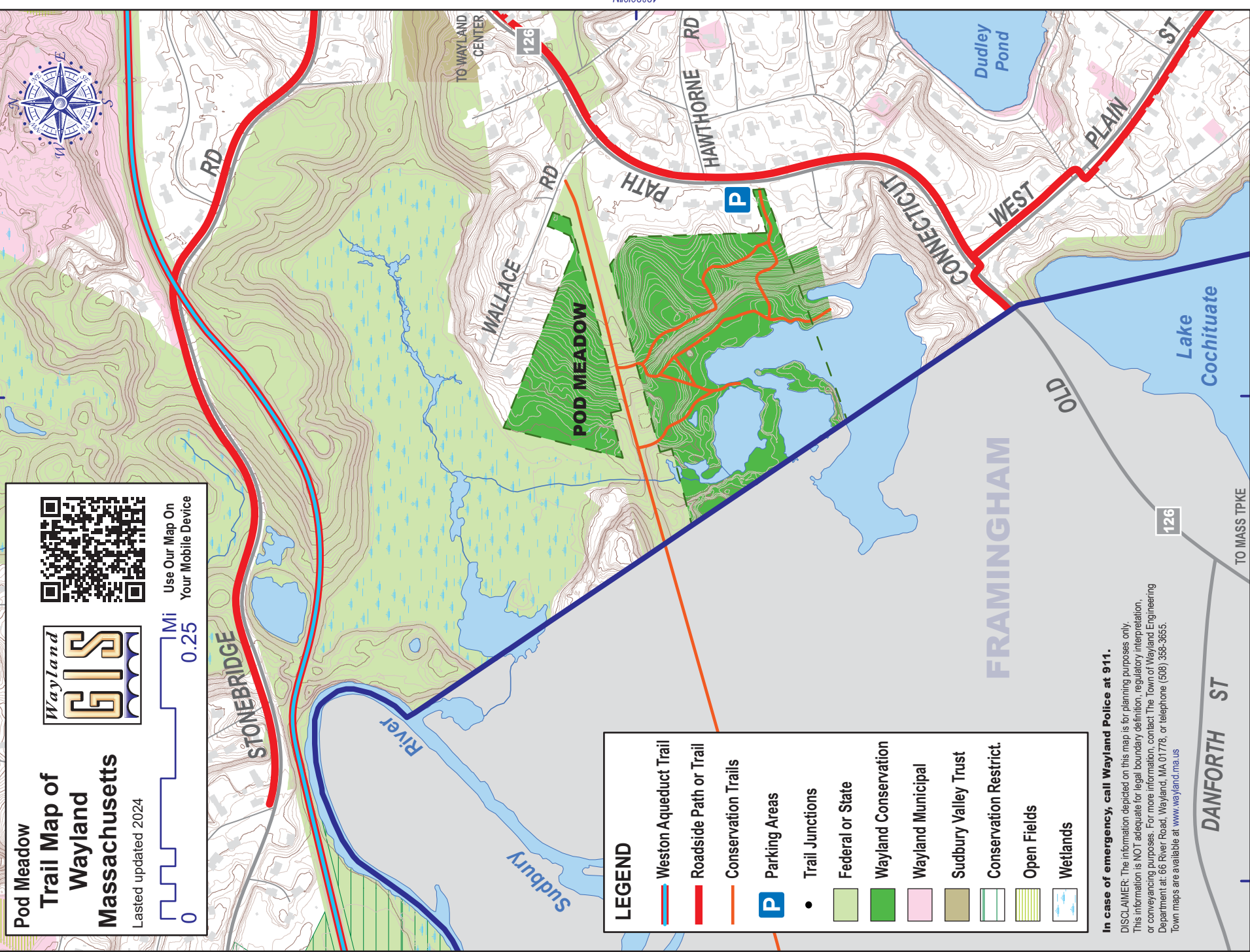
Lasted updated 2024



Use Our Map On
Your Mobile Device



0 0.25 0.5 Mi



LEGEND

- Weston Aqueduct Trail
- Roadside Path or Trail
- Conservation Trails
- Parking Areas
- Trail Junctions
- Federal or State
- Wayland Conservation
- Wayland Municipal
- Sudbury Valley Trust
- Conservation Restrict.
- Open Fields
- Wetlands

In case of emergency, call Wayland Police at 911.

DISCLAIMER: The information depicted on this map is for planning purposes only. This information is NOT adequate for legal boundary definition, regulatory interpretation, or conveyancing purposes. For more information, contact The Town of Wayland Engineering Department at 66 River Road, Wayland, MA 01778, or telephone (608) 358-3655. Town maps are available at www.wayland.ma.us