

Directions

Parking:

Black Cat Farm*:
46 Glezen Ln., Wayland,
MA 01778

*this parking area is owned and
managed by SVT



Second parking lot:
48 Moore Rd. Wayland,
MA 01778



Prohibited Activities

no fire of any kind
 no motorized vehicles
 no drones
 no hunting or trapping
 no littering
 no swimming
 no smoking, drugs, or alcohol

Things to Do

please stay on the trail
 snowshoeing, skiing
 please do not disturb wildlife
 picnicking (pack in, pack out)

Dog walking rules:

- 3 dogs per person
- On leash or voice control at all times
- Clean up dog waste and keep to the trail
- Be aware of children and visitors with dogs

About this Property

Sedge Meadow is an 93.1 acre Conservation area which borders the Sudbury River and features several vernal pools. The trail is out-and-back, 2.5mi round trip. This Conservation area is mainly grassland habitat and is home to many grassland birds, hawks, small mammals, and amphibians.

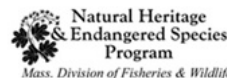
The bird feeder in the pollinator garden is kept stocked with seed year-round. Visitors are encouraged to come and observe this area which is always bustling with bird activity. It is located only about 0.1mi from the Black Cat Farm parking lot, at the west end of the field.



Photo courtesy of Brian Harris, Conservation Land Manager.

Tree Swallows dominate the grass fields in the spring and head back to South America in the fall.

A recent and ongoing restoration project with the intention of creating breeding habitat for the state-threatened Bobolink, a ground-nesting grassland bird, can be seen at the north end of the Black Cat field. (pictured in the cover for this brochure)



Sedge Meadow

Open sunrise-sunset

Wayland Conservation Trail Map



www.wayland.ma.us/conservation

@waylandconservation

(508)-358-3669

Sedge Meadow Trail Map of Wayland Massachusetts

Last updated 2024



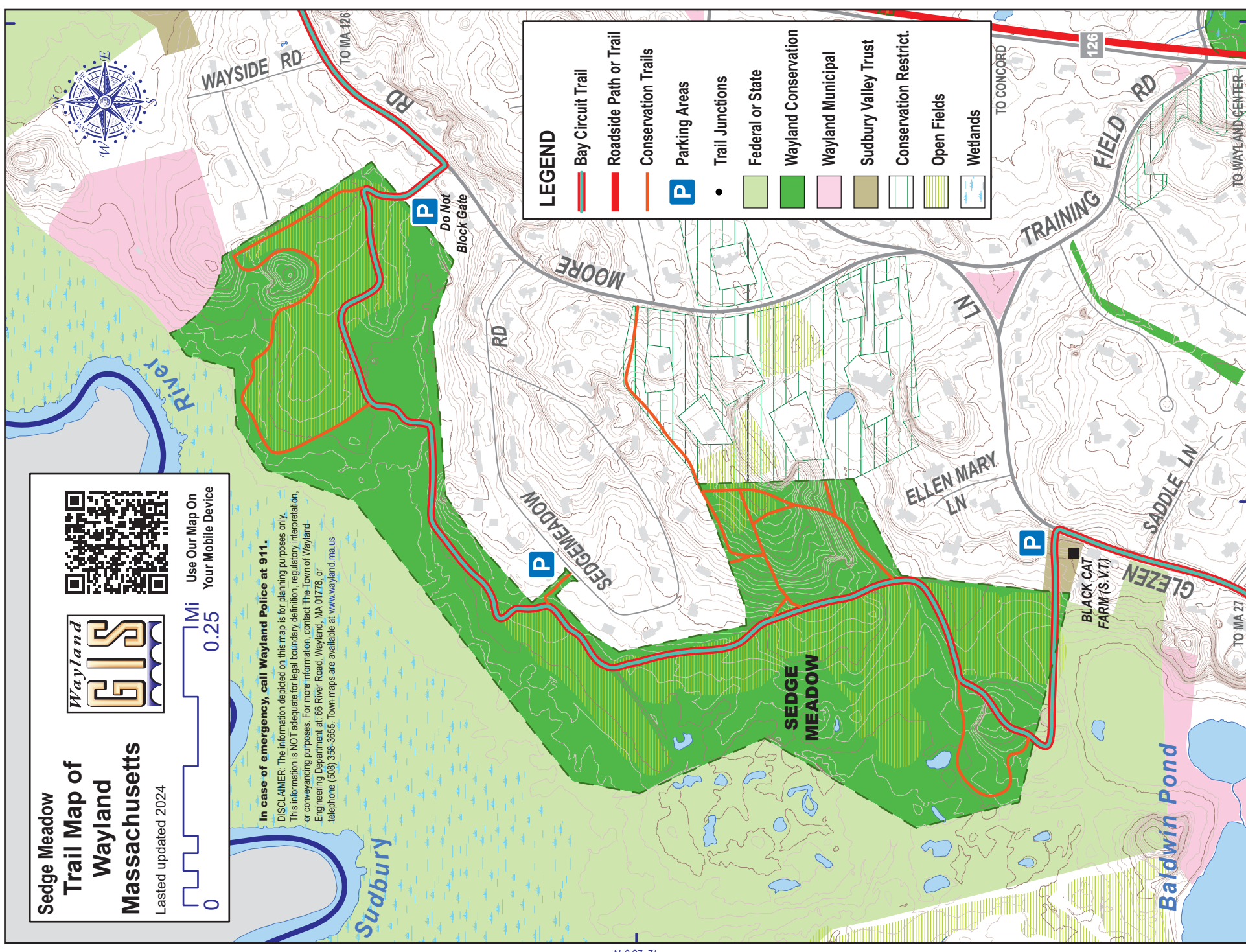
Use Our Map On
Your Mobile Device



In case of emergency, call Wayland Police at 911.

DISCLAIMER: The information depicted on this map is for planning purposes only. This information is NOT adequate for legal boundary definition, regulatory interpretation, or conveying purposes. For more information, contact The Town of Wayland Engineering Department at: 66 River Road, Wayland, MA 01778, or telephone (508) 358-3655. Town maps are available at www.wayland.ma.us

LEGEND	
	Bay Circuit Trail
	Roadside Path or Trail
	Conservation Trails
	Parking Areas
	Trail Junctions
	Federal or State
	Wayland Conservation
	Wayland Municipal
	Sudbury Valley Trust
	Conservation Restrict.
	Open Fields
	Wetlands



71°21'30"W

42°23'0"N

71°22'0"W

71°21'30"W