

Directions

Parking: There are four parking areas for Upper Mill Brook, but no parking at Lower Mill Brook.

Parking 1: Peace Lutheran Church, 107 Concord Rd. →



Parking 2: End of Three Ponds Rd., 65A Three Ponds Rd. ←



Parking 3: End of Squirrel Hill Rd., Near 18/19 Squirrel Hill Rd. →



Parking 4: Limited parking along Pear Tree Ln. ←



Prohibited Activities

 no fire of any kind	 no motorized vehicles	 no drones	 no hunting or trapping
 no littering	 no swimming	 no smoking, drugs, or alcohol	

Things to Do

 please stay on the trail	 snowshoeing, skiing	 please do not disturb wildlife	 picnicking (pack in, pack out)
--	--	---	---

Dog walking rules:

- 3 dogs per person
- On leash or voice control at all times
- Clean up dog waste and keep to the trail
- Be aware of children and visitors with dogs

About this Property

Upper and Lower Mill Brook are two separate Conservation areas that preserve much of Mill Brook and its associated bordering vegetated wetlands and riverfront area.

The **Upper Mill Brook** trail system features about 2 miles of trails and they are mostly interconnecting loops that will eventually bring you back to your starting point.

The trails are hilly and go through Eastern White Pine Forest and along many water features.

The most notable feature is the Great Blue Heron rookery which is clearly visible from the long bridge over the wetlands. Anywhere from 8-12 GBHE pairs will nest in this colony.

An entrance for **Lower Mill Brook** can be found at the intersection of Plain Rd. and Lingley Ln., near 56 Plain Rd.

The trail is an out-and-back trail totaling about 1.4 miles. The trail is prone to flooding during rainy seasons.

Wood ducks are resident nesters in the wetland areas.

The Mill Brook wetland area is a highly active site for amphibians. **Use caution when driving near here on rainy nights!**

Upper & Lower Mill Brook

Open sunrise-sunset

Wayland Conservation Trail Map



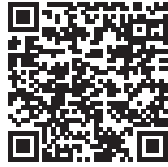
www.wayland.ma.us/conservation

 @waylandconservation

(508)-358-3669

Upper & Lower Mill Brook
Trail Map of
Wayland
Massachusetts

Last updated 2024

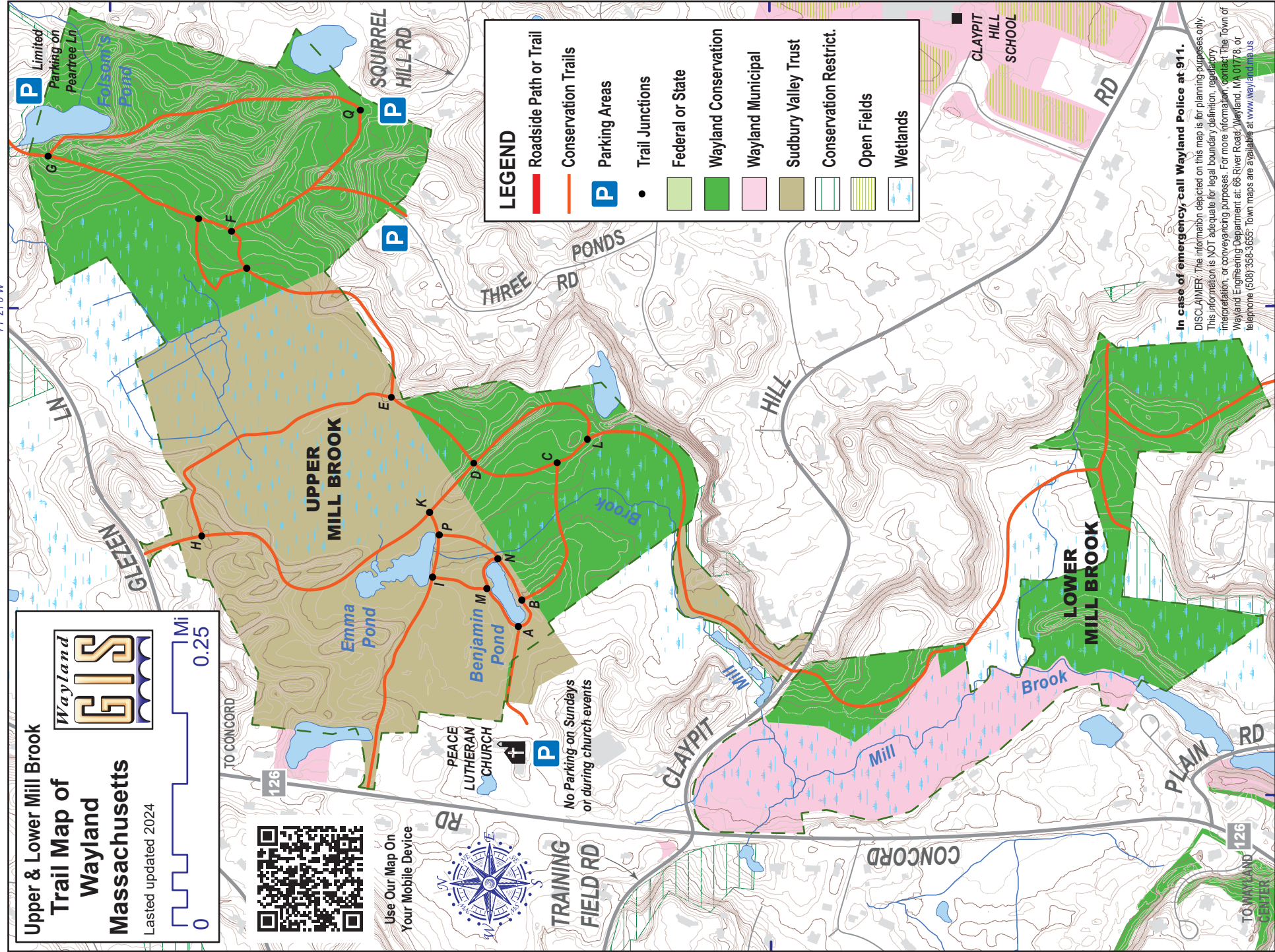


Use Our Map On
Your Mobile Device



TRAINING
FIELD RD

No Parking on Sundays
or during church events



LEGEND

- Roadside Path or Trail
- Conservation Trails
- Parking Areas
- Trail Junctions
- Federal or State
- Wayland Conservation
- Wayland Municipal
- Sudbury Valley Trust
- Conservation Restrict.
- Open Fields
- Wetlands

In case of emergency, call Wayland Police at 911.
DISCLAIMER: The information depicted on this map is for planning purposes only. This information is NOT adequate for legal boundary definition, regulatory interpretation or conveyancing purposes. For more information, contact The Town of Wayland Engineering Department at: 66 River Road, Wayland, MA 01778, or telephone (609) 358-3655; town maps are available at www.wayland.ma.us

71°21'0"W

42°23'0"N

42°22'30"N

42°22'30"N

71°21'0"W

71°21'30"W