

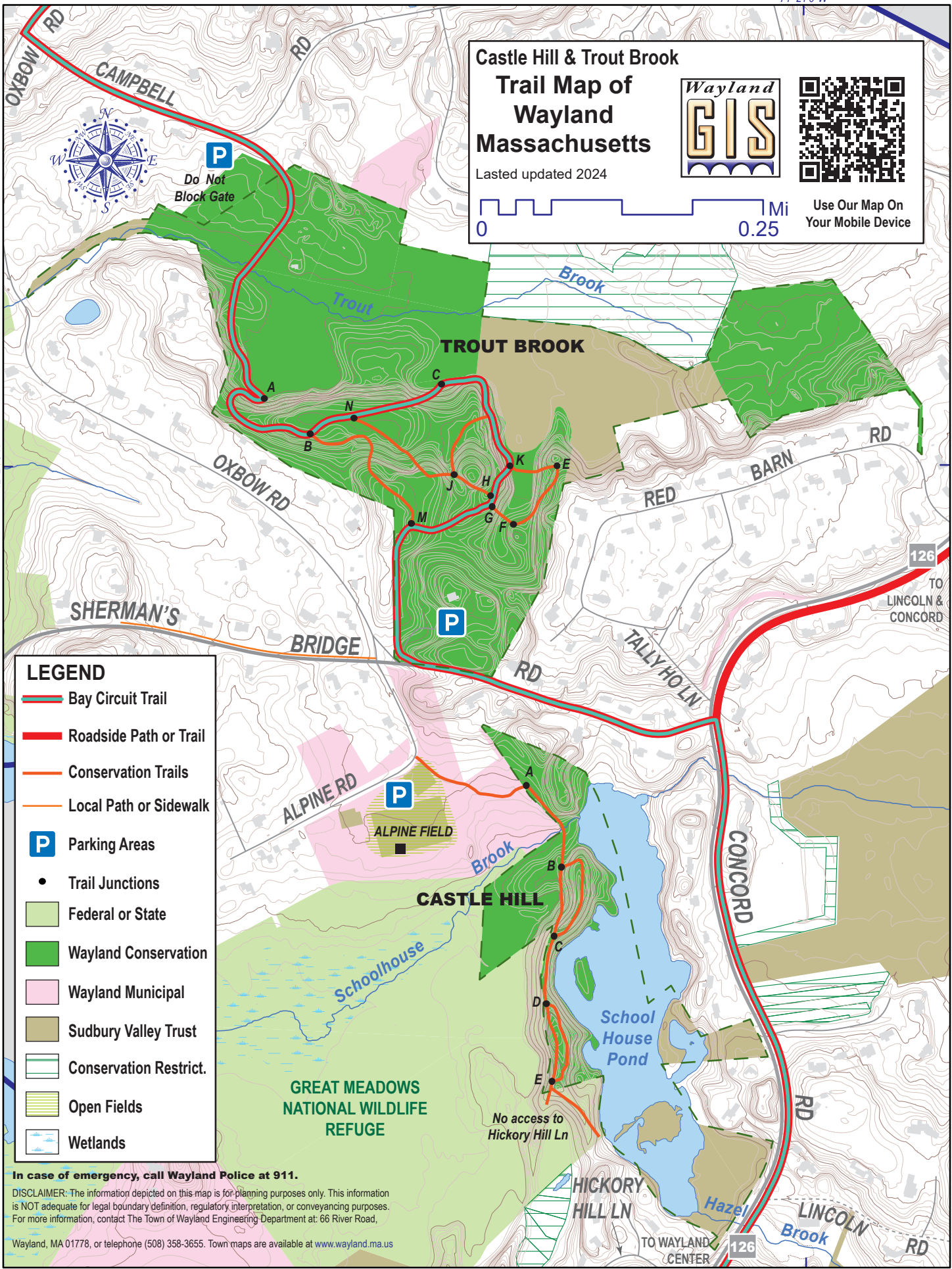
Castle Hill & Trout Brook Trail Map of Wayland Massachusetts



Last updated 2024



Use Our Map On
Your Mobile Device



LEGEND

- Bay Circuit Trail
- Roadside Path or Trail
- Conservation Trails
- Local Path or Sidewalk
- Parking Areas
- Trail Junctions
- Federal or State
- Wayland Conservation
- Wayland Municipal
- Sudbury Valley Trust
- Conservation Restrict.
- Open Fields
- Wetlands

In case of emergency, call Wayland Police at 911.

DISCLAIMER: The information depicted on this map is for planning purposes only. This information is NOT adequate for legal boundary definition, regulatory interpretation, or conveyancing purposes. For more information, contact The Town of Wayland Engineering Department at: 66 River Road, Wayland, MA 01778, or telephone (508) 358-3655. Town maps are available at www.wayland.ma.us

Cow Common Trail Map of Wayland Massachusetts

Lasted updated 2024



0 0.25 Mi Use Our Map On Your Mobile Device



WAYLAND COUNTRY CLUB

Baldwin Pond

WAYLAND WATER TREATMENT

BLACK CAT FARM (S.V.T.)

In case of emergency, call Wayland Police at 911.

DISCLAIMER: The information depicted on this map is for planning purposes only. This information is NOT adequate for legal boundary definition, regulatory interpretation, or conveyancing purposes. For more information, contact The Town of Wayland Engineering Department at: 66 River Road, Wayland, MA 01778, or telephone (508) 358-3655. Town maps are available at www.wayland.ma.us

GREAT MEADOWS NATIONAL WILDLIFE REFUGE

LEGEND

- Bay Circuit Trail
- Mass-Central Trail
- Roadside Path or Trail
- Conservation Trails
- Local Path or Sidewalk
- Parking Areas
- Trail Junctions
- Federal or State
- Wayland Conservation
- Wayland Municipal
- Sudbury Valley Trust
- Open Fields
- Wetlands

COW COMMON

COMMUNITY GARDENS

NORTH CEMETERY

SUBBURY

BOW RD

AVE

WAYLAND WASTEWATER TREATMENT

WAYLAND CENTER

ANDREW

BOSTON

POST

RD

TO WESTON

TO SUBBURY

71°22'30"W

71°22'0"W


42°22'30"N

42°22'30"N


42°22'0"N

**Dudley Brook & Lower Snake Brook
Trail Map of
Wayland
Massachusetts**

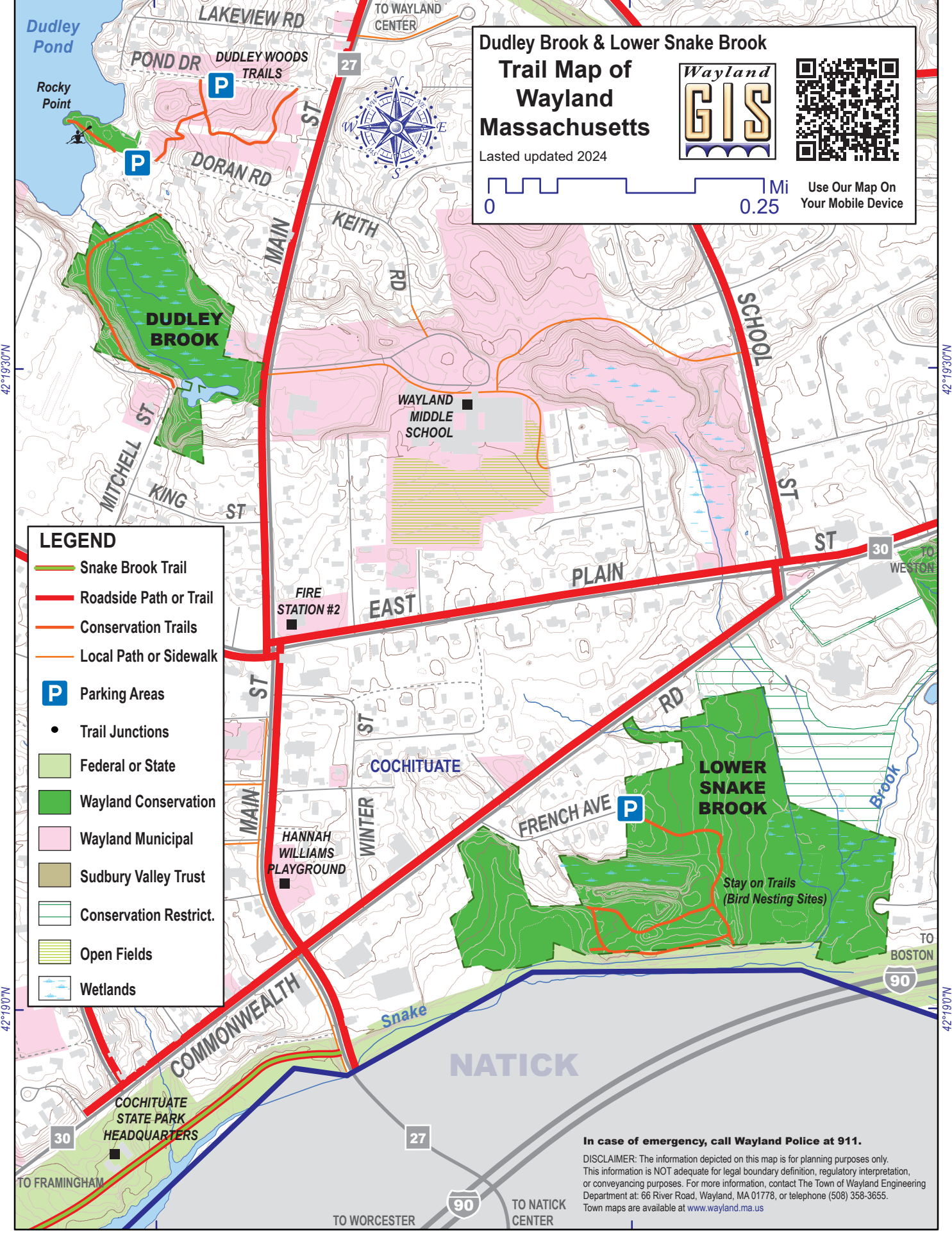
Wayland GIS



Last updated 2024



Use Our Map On Your Mobile Device



LEGEND

- Snake Brook Trail
- Roadside Path or Trail
- Conservation Trails
- Local Path or Sidewalk
- Parking Areas
- Trail Junctions
- Federal or State
- Wayland Conservation
- Wayland Municipal
- Sudbury Valley Trust
- Conservation Restrict.
- Open Fields
- Wetlands

In case of emergency, call Wayland Police at 911.

DISCLAIMER: The information depicted on this map is for planning purposes only. This information is NOT adequate for legal boundary definition, regulatory interpretation, or conveying purposes. For more information, contact The Town of Wayland Engineering Department at: 66 River Road, Wayland, MA 01778, or telephone (508) 358-3655. Town maps are available at www.wayland.ma.us

71°22'0"W

71°21'30"W

Greenways Trail Map of Wayland Massachusetts

Last updated 2024



Use Our Map On
Your Mobile Device

42°21'0"N

42°21'0"N

LEGEND

- Bay Circuit Trail
- Weston Aqueduct Trail
- Roadside Path or Trail
- Conservation Trails
- Parking Areas
- Trail Junctions
- Federal or State
- Wayland Conservation
- Wayland Municipal
- Sudbury Valley Trust
- Open Fields
- Wetlands

In case of emergency, call Wayland Police at 911.

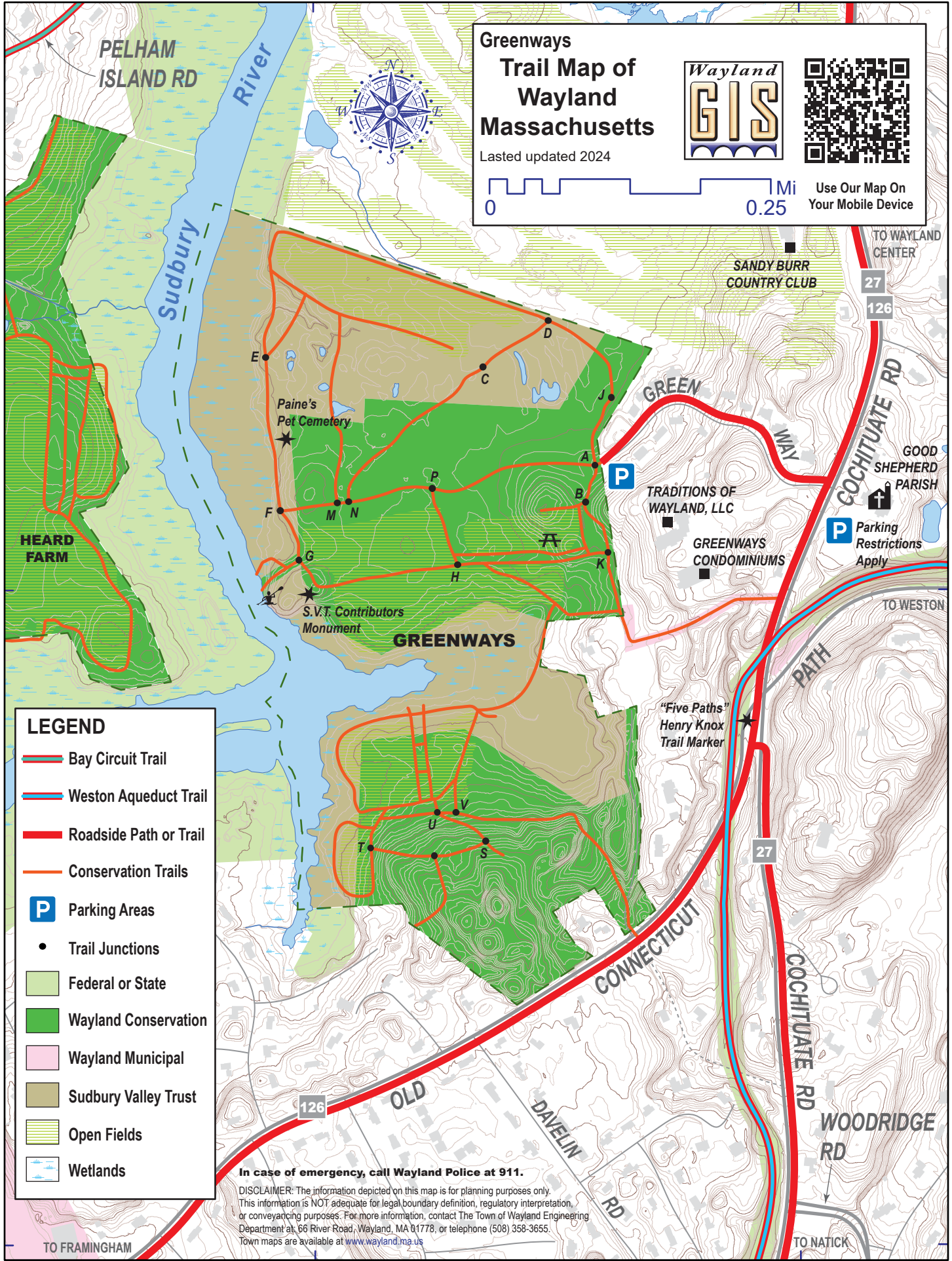
DISCLAIMER: The information depicted on this map is for planning purposes only. This information is NOT adequate for legal boundary definition, regulatory interpretation, or conveyancing purposes. For more information, contact The Town of Wayland Engineering Department at 66 River Road, Wayland, MA 01778, or telephone (508) 358-3655. Town maps are available at www.wayland.ma.us

42°20'30"N

42°20'30"N

71°22'0"W

71°21'30"W



TO FRAMINGHAM

TO NATICK

TO WAYLAND CENTER

TO WESTON

42°21'0"N

71°21'0"W

Hamlen Woods Trail Map of Wayland Massachusetts

Last updated 2024



Use Our Map On
Your Mobile Device



REEVE'S HILL
WATER TANK

REEVES
HILL

DEER
RUN

P
Parking
(3-4 cars)

Snake

MAINSTONE
FARM

HAMLEN WOODS

Brook

LEGEND

- Conservation Trails
- Parking Areas
- Trail Junctions
- Wayland Conservation
- Sudbury Valley Trust
- Conservation Restrict.
- Open Fields
- Wetlands

No Access to
Reservoir Rd

WOODRIDGE
RD

RESERVOIR
RD

Old Wayland
Reservoirs

(WAYLAND
HILLS)

WAYLAND
HILLS

In case of emergency, call Wayland Police at 911.

DISCLAIMER: The information depicted on this map is for planning purposes only. This information is NOT adequate for legal boundary definition, regulatory interpretation, or conveyancing purposes. For more information, contact The Town of Wayland Engineering Department at: 66 River Road, Wayland, MA 01778, or telephone (508) 398-3655. Town maps are available at www.wayland.ma.us

71°21'0"W

71°20'30"W

42°20'30"N

71°22'30"W



**Heard Farm
Trail Map of
Wayland
Massachusetts**

Wayland
GIS

Last updated 2024

0 0.25 Mi Use Our Map On Your Mobile Device

**GREAT MEADOWS
NATIONAL WILDLIFE
REFUGE**

TO SUDBURY

**PELHAM
RD**

TO WAYLAND
CENTER

Stay on Trails

**Heard
Pond**

ISLAND



Stay on Trails

**Sudbury
River**

GREENWAYS

LEGEND

- Bay Circuit Trail
- Conservation Trails
- Parking Areas
- Trail Junctions
- Federal or State
- Wayland Conservation
- Wayland Municipal
- Sudbury Valley Trust
- Open Fields
- Wetlands

**HEARD
FARM**

Orchard

Orchard

Orchard

**Sudbury
River**

**CHARENA
RD**

**WAYLAND HIGH SCHOOL
ATHLETIC FIELDS**

42°21'0"N

In case of emergency, call Wayland Police at 911.

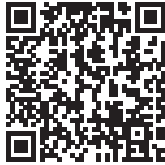
DISCLAIMER: The information depicted on this map is for planning purposes only. This information is NOT adequate for legal boundary definition, regulatory interpretation, or conveyancing purposes. For more information, contact The Town of Wayland Engineering Department at: 66 River Road, Wayland, MA 01778, or telephone (508) 358-3655. Town maps are available at www.wayland.ma.us

71°22'30"W

71°20'30"W

71°20'0"W

Lincoln Road & Hazel Brook Trail Map of Wayland Massachusetts



Last updated 2024



Use Our Map On
Your Mobile Device

LEGEND

- Conservation Trails
- Parking Areas
- Trail Junctions
- Wayland Conservation
- Sudbury Valley Trust
- Conservation Restrict.
- Open Fields
- Wetlands

WALTHAM RD

CARROLL
SCHOOL (PVT)

LINCOLN
OLD SUDBURY RD



42°24'0"N

Not open
to public

OGILVIE
TOWN
FOREST

42°23'30"N

42°23'30"N

RD

LINCOLN
RD

RD

Hazel

C

2

4

1

RD

LINCOLN

RD

RD

Stone
Pond

Stay on Trail!
Not Open to Public

HAZEL
BROOK (S.V.T.)

WESTON

Trail passes
through private property!



WAYLAND SWIMMING
& TENNIS CLUB

AUTUMN LN

GLEZEN

TO WESTON
CENTER

In case of emergency, call Wayland Police at 911.

DISCLAIMER: The information depicted on this map is for planning purposes only. This information is NOT adequate for legal boundary definition, regulatory interpretation, or conveyancing purposes. For more information, contact The Town of Wayland Engineering Department at: 66 River Road, Wayland, MA 01778; or telephone (508) 358-3655. Town maps are available at www.wayland.ma.us

TO WAYLAND
CENTER

GLEZEN
LN

DRAPER
RD

71°20'0"W

71°20'30"W

71°21'0"W

71°20'30"W

Loker & Timber Lane Trail Map of Wayland Massachusetts



Last updated 2024



Use Our Map On
Your Mobile Device

42°19'30"N

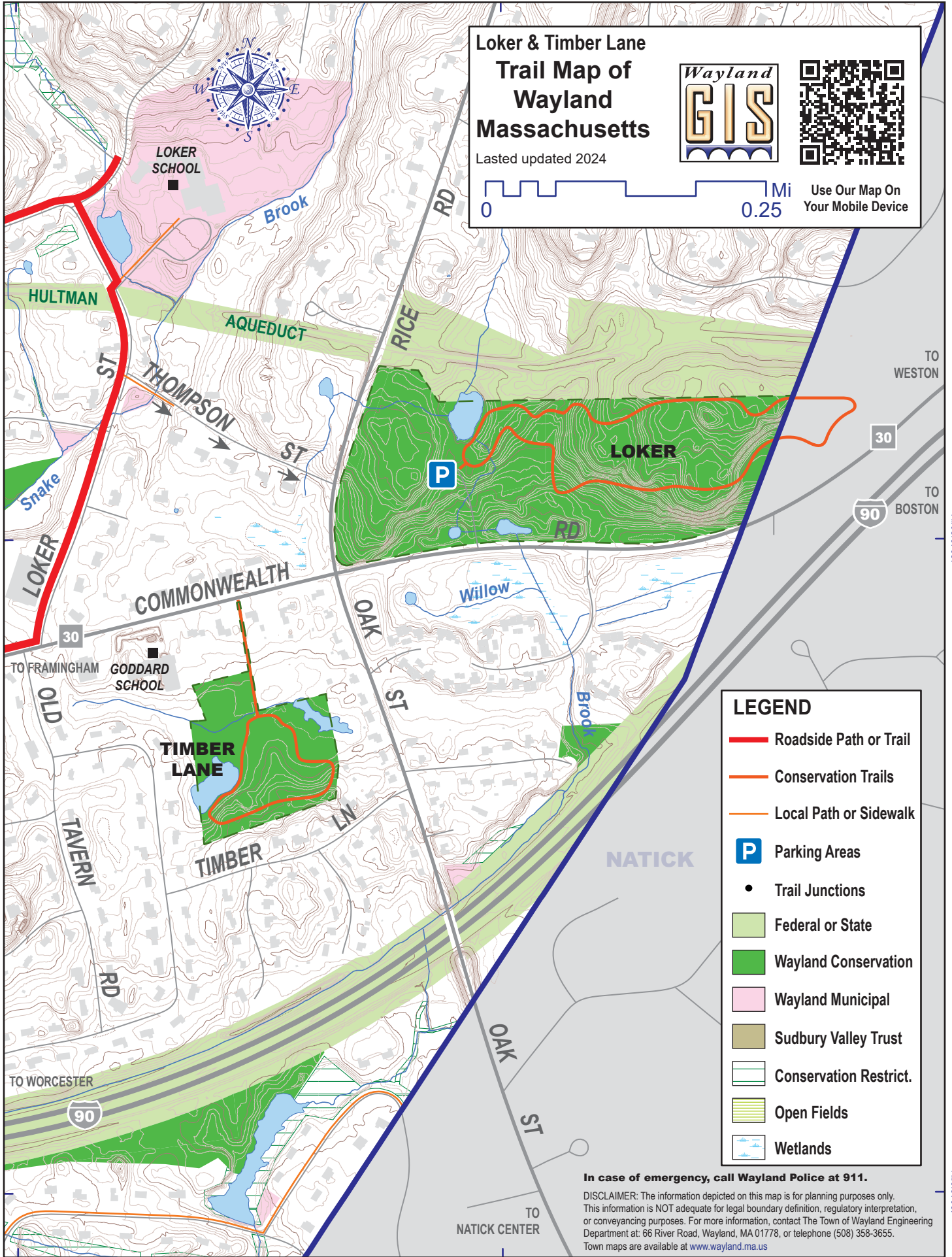
42°19'30"N

42°19'0"N

42°19'0"N

71°21'0"W

71°20'30"W



LEGEND

- Roadside Path or Trail
- Conservation Trails
- Local Path or Sidewalk
- Parking Areas
- Trail Junctions
- Federal or State
- Wayland Conservation
- Wayland Municipal
- Sudbury Valley Trust
- Conservation Restrict.
- Open Fields
- Wetlands

In case of emergency, call Wayland Police at 911.

DISCLAIMER: The information depicted on this map is for planning purposes only. This information is NOT adequate for legal boundary definition, regulatory interpretation, or conveyancing purposes. For more information, contact The Town of Wayland Engineering Department at: 66 River Road, Wayland, MA 01778, or telephone (508) 358-3655. Town maps are available at www.wayland.ma.us

71°21'0"W

71°21'30"W

Mainstone Farm & Reeves Hill

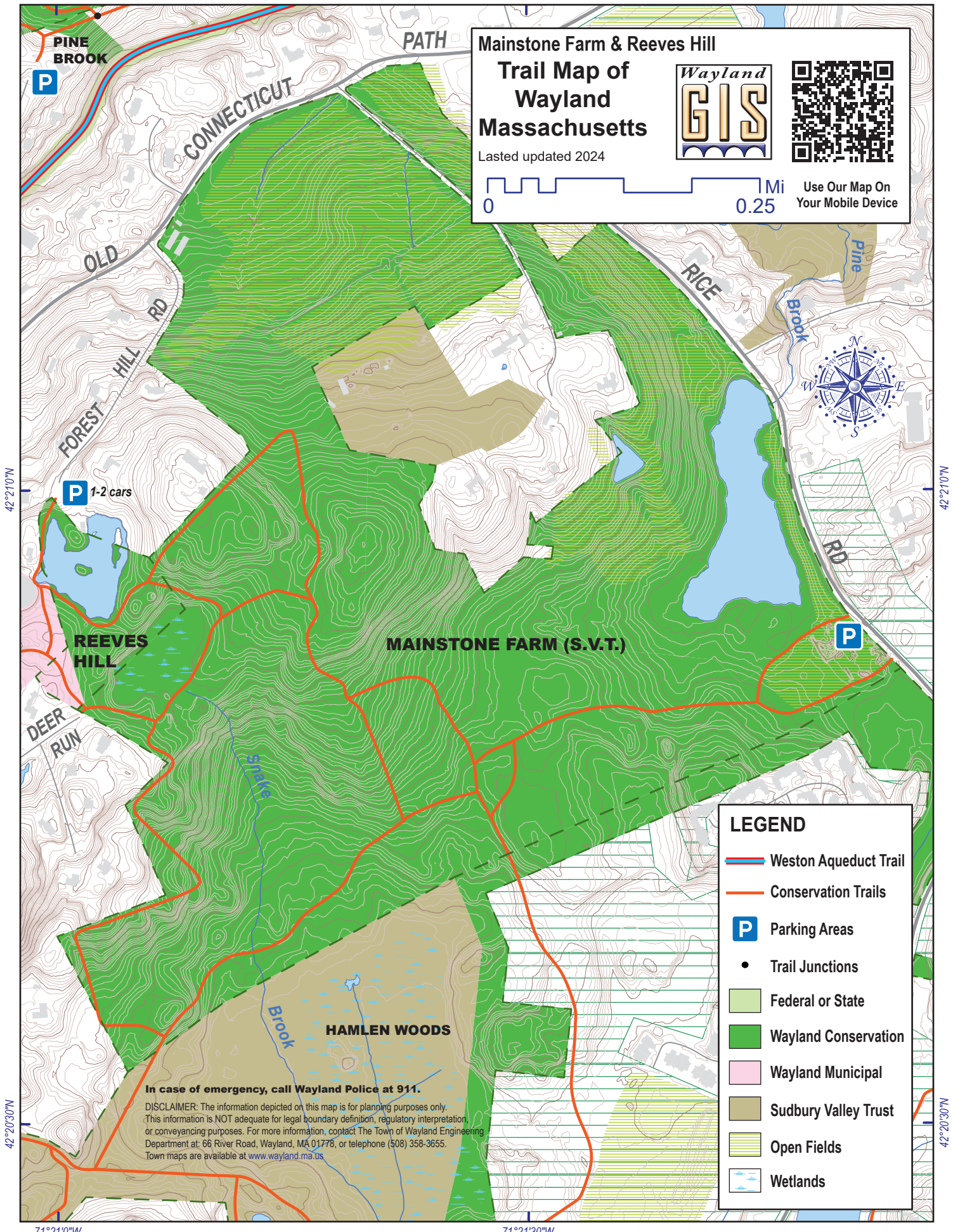
Trail Map of Wayland Massachusetts



Lasted updated 2024



Use Our Map On Your Mobile Device



42°21'0"N

42°21'0"N

42°20'30"N

42°20'30"N

LEGEND

- Weston Aqueduct Trail
- Conservation Trails
- Parking Areas
- Trail Junctions
- Federal or State
- Wayland Conservation
- Wayland Municipal
- Sudbury Valley Trust
- Open Fields
- Wetlands

In case of emergency, call Wayland Police at 911.

DISCLAIMER: The information depicted on this map is for planning purposes only. This information is NOT adequate for legal boundary definition, regulatory interpretation or conveyancing purposes. For more information, contact The Town of Wayland Engineering Department at: 66 River Road, Wayland, MA 01778, or telephone (508) 358-3655. Town maps are available at www.wayland.ma.us

71°21'0"W

71°21'30"W

71°20'30"W

71°20'0"W

Mainstone Hills (Turkey Hill & Wayland Hills)

Trail Map of Wayland Massachusetts



Last updated 2024



Use Our Map On Your Mobile Device



BROOMSTONE'S CURLING CLUB

CHURCH OF THE HOLY SPIRIT
Parking Restrictions Apply

CURLING WAY

No Parking (Private Recreation)

Old Wayland Reservoirs

(WAYLAND HILLS)

MAINSTONE RD

HILLSIDE

DR

WAYLAND HILLS

Cochituate Gate House

1-2 cars

WAYLAND HILLS RD

NATICK

Town Boundaries Marker

TO MART 30

LEGEND

- Conservation Trails
- P** Parking Areas
- Trail Junctions
- Wayland Conservation
- Sudbury Valley Trust
- Conservation Restrict.
- ▨ Open Fields
- ▨ Wetlands

In case of emergency, call Wayland Police at 911.

DISCLAIMER: The information depicted on this map is for planning purposes only. This information is NOT adequate for legal boundary definition, regulatory interpretation, or conveyancing purposes. For more information, contact The Town of Wayland Engineering Department at: 66 River Road, Wayland, MA 01778, or telephone (508) 358-3655. Town maps are available at www.wayland.ma.us

TO MART 30

71°20'0"W

42°20'30"N

42°20'30"W

42°20'0"N

**Upper & Lower Mill Brook
Trail Map of
Wayland
Massachusetts**

Wayland
GIS

Last updated 2024



Use Our Map On
Your Mobile Device



**TRAINING
FIELD RD**

PEACE
LUTHERAN
CHURCH

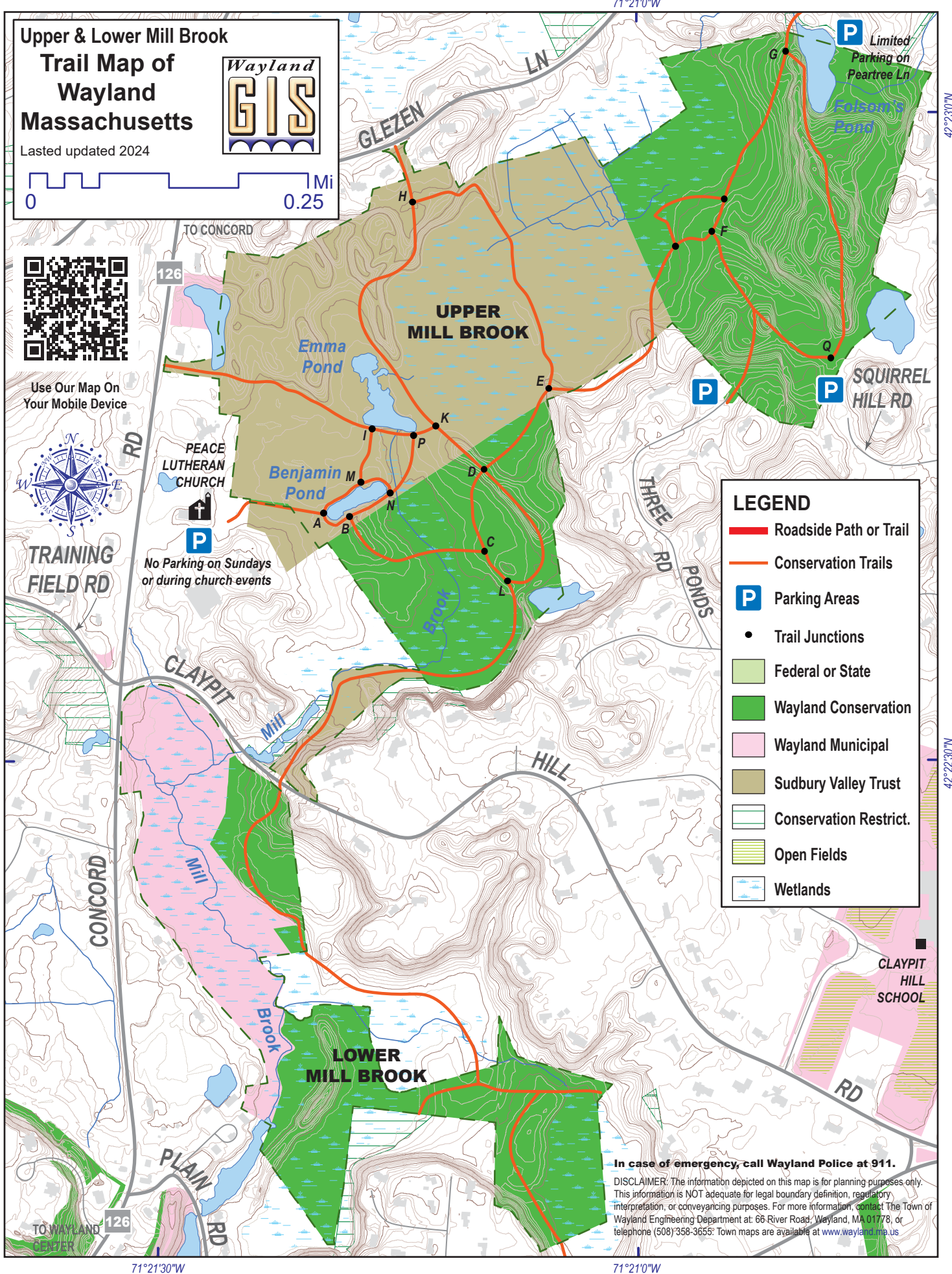
P
No Parking on Sundays
or during church events

LEGEND

- Roadside Path or Trail
- Conservation Trails
- Parking Areas
- Trail Junctions
- Federal or State
- Wayland Conservation
- Wayland Municipal
- Sudbury Valley Trust
- Conservation Restrict.
- Open Fields
- Wetlands

In case of emergency, call Wayland Police at 911.

DISCLAIMER: The information depicted on this map is for planning purposes only. This information is NOT adequate for legal boundary definition, regulatory interpretation, or conveyancing purposes. For more information, contact The Town of Wayland Engineering Department at 66 River Road, Wayland, MA 01778, or telephone (508) 358-3655. Town maps are available at www.wayland.ma.us



71°21'30"W

71°21'0"W

42°22'30"N

42°22'30"N

42°23'0"N

71°21'0"W

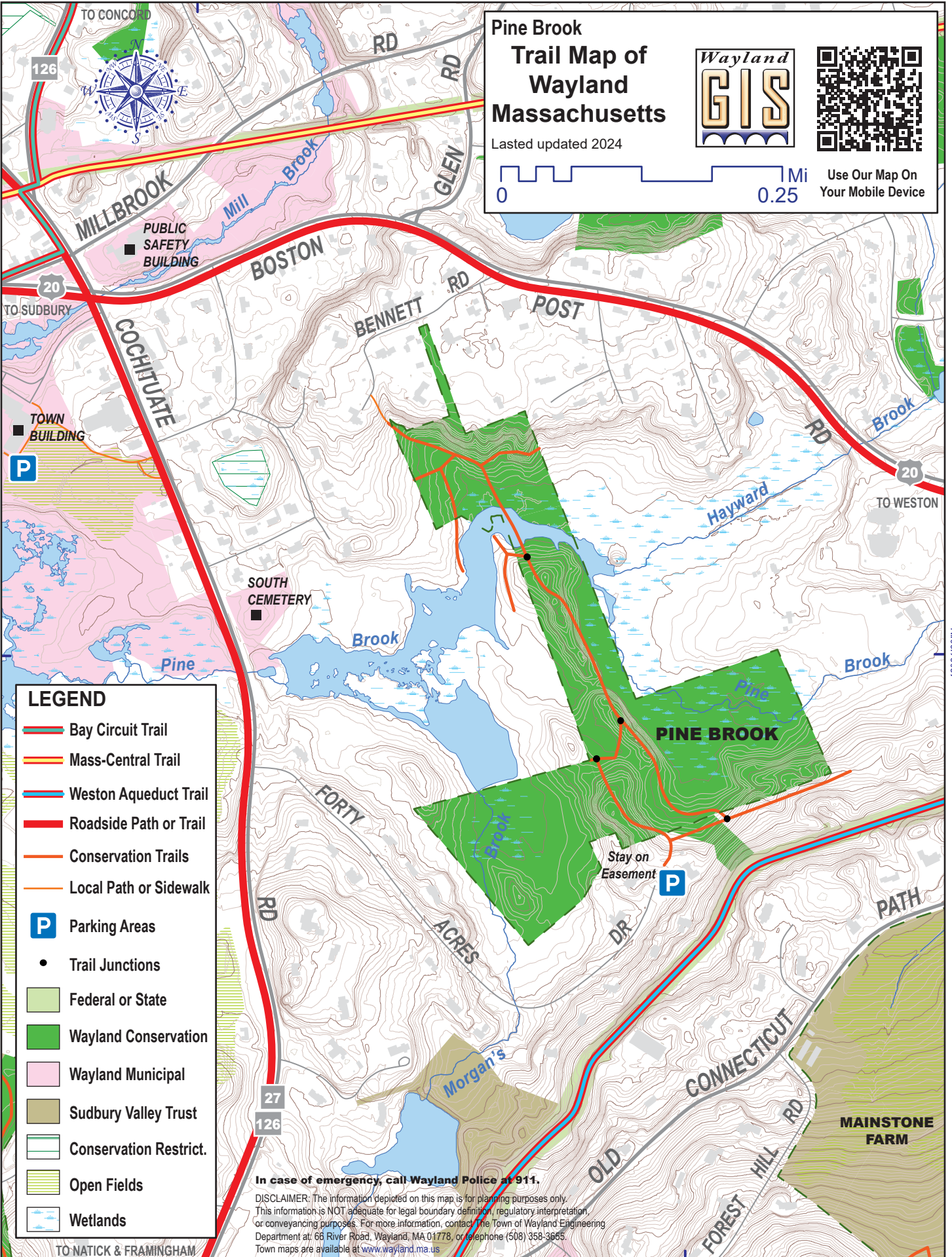
71°21'30"W

Pine Brook Trail Map of Wayland Massachusetts

Lasted updated 2024



Use Our Map On
Your Mobile Device



42°21'30"N

42°21'30"N

LEGEND

- Bay Circuit Trail
- Mass-Central Trail
- Weston Aqueduct Trail
- Roadside Path or Trail
- Conservation Trails
- Local Path or Sidewalk
- Parking Areas
- Trail Junctions
- Federal or State
- Wayland Conservation
- Wayland Municipal
- Sudbury Valley Trust
- Conservation Restrict.
- Open Fields
- Wetlands

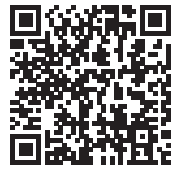
In case of emergency, call Wayland Police at 911.
 DISCLAIMER: The information depicted on this map is for planning purposes only. This information is NOT adequate for legal boundary definition, regulatory interpretation, or conveyancing purposes. For more information, contact The Town of Wayland Engineering Department at 66 River Road, Wayland, MA 01778, or telephone (508) 358-3655. Town maps are available at www.wayland.ma.us

TO NATICK & FRAMINGHAM

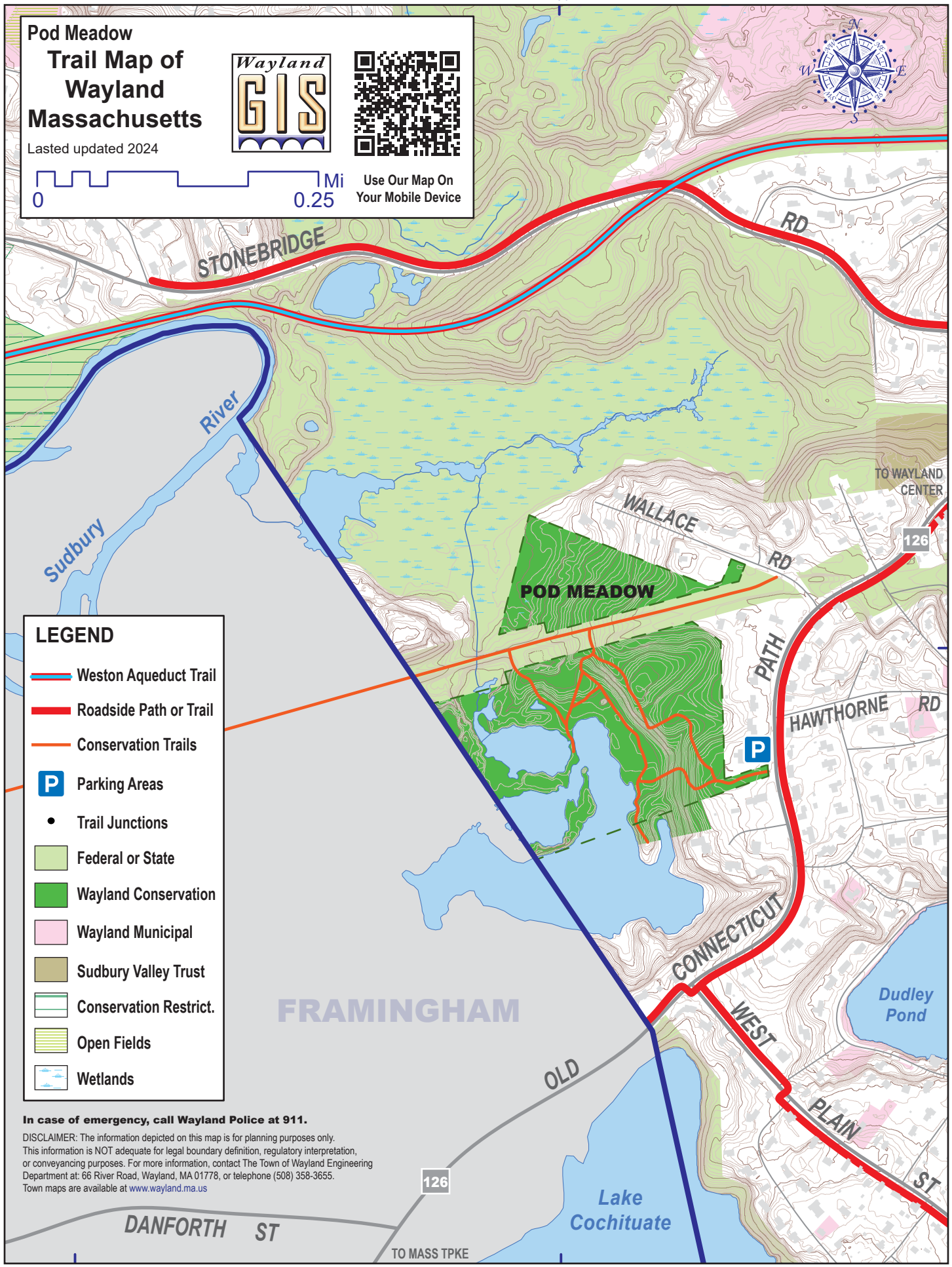
71°21'0"W

**Pod Meadow
Trail Map of
Wayland
Massachusetts**

Lasted updated 2024



Use Our Map On
Your Mobile Device



LEGEND

- Weston Aqueduct Trail
- Roadside Path or Trail
- Conservation Trails
- Parking Areas
- Trail Junctions
- Federal or State
- Wayland Conservation
- Wayland Municipal
- Sudbury Valley Trust
- Conservation Restrict.
- Open Fields
- Wetlands

In case of emergency, call Wayland Police at 911.
 DISCLAIMER: The information depicted on this map is for planning purposes only. This information is NOT adequate for legal boundary definition, regulatory interpretation, or conveyancing purposes. For more information, contact The Town of Wayland Engineering Department at: 66 River Road, Wayland, MA 01778, or telephone (508) 358-3655. Town maps are available at www.wayland.ma.us

71°23'30"W

71°23'0"W

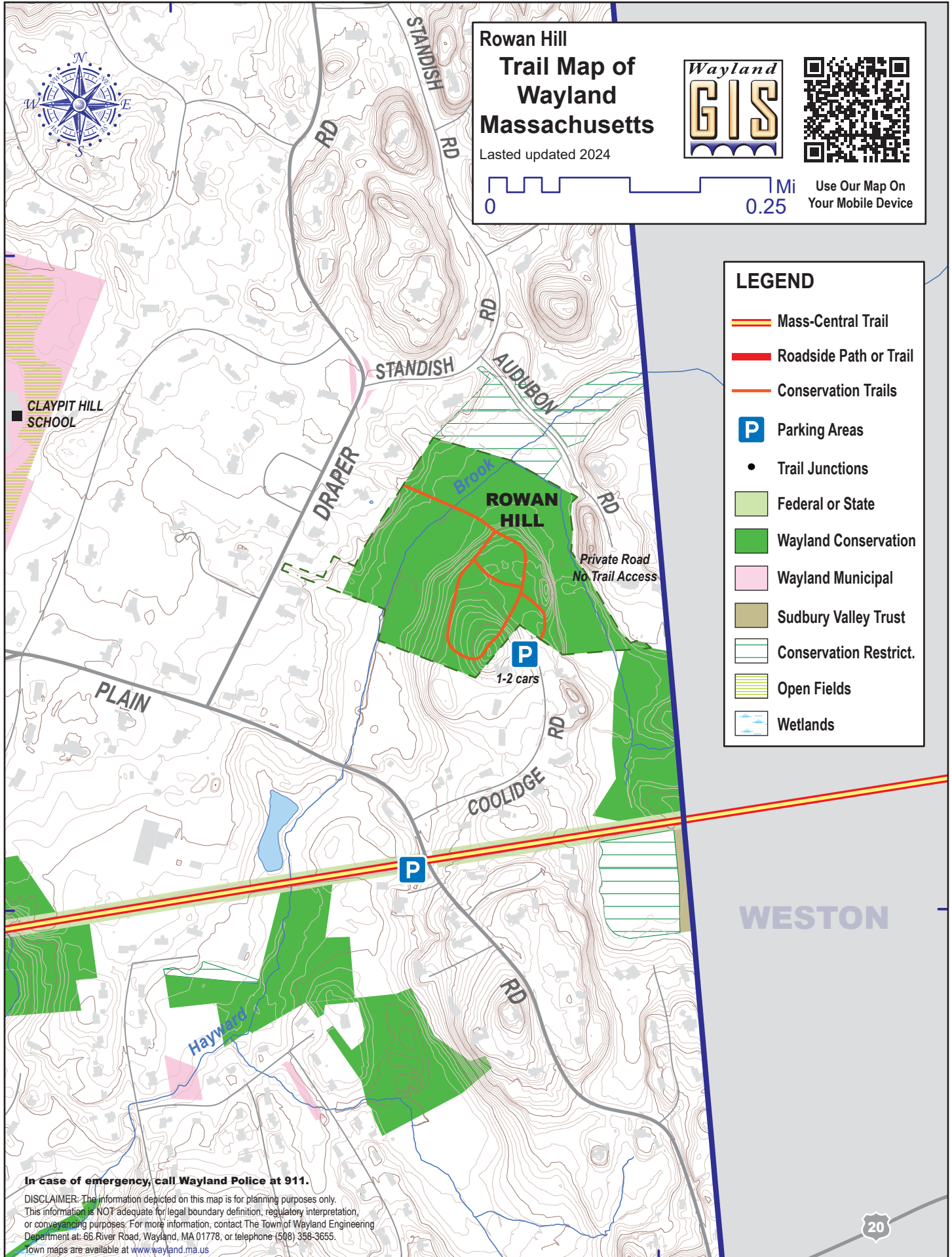
42°20'0"N

71°20'30"W

42°22'30"N

42°22'0"N

42°22'0"N



**Rowan Hill
Trail Map of
Wayland
Massachusetts**

Last updated 2024



Use Our Map On
Your Mobile Device

LEGEND

- Mass-Central Trail
- Roadside Path or Trail
- Conservation Trails
- Parking Areas
- Trail Junctions
- Federal or State
- Wayland Conservation
- Wayland Municipal
- Sudbury Valley Trust
- Conservation Restrict.
- Open Fields
- Wetlands

In case of emergency, call Wayland Police at 911.
 DISCLAIMER: The information depicted on this map is for planning purposes only. This information is NOT adequate for legal boundary definition, regulatory interpretation, or conveyancing purposes. For more information, contact The Town of Wayland Engineering Department at: 66 River Road, Wayland, MA 01778, or telephone (508) 358-3655. Town maps are available at www.wayland.ma.us



71°20'0"W

Sedge Meadow Trail Map of Wayland Massachusetts

Last updated 2024



0 Mi 0.25 Use Our Map On Your Mobile Device



In case of emergency, call Wayland Police at 911.
DISCLAIMER: The information depicted on this map is for planning purposes only. This information is NOT adequate for legal boundary definition, regulatory interpretation, or conveyancing purposes. For more information, contact The Town of Wayland Engineering Department at: 66 River Road, Wayland, MA 01778, or telephone (508) 358-3655. Town maps are available at www.wayland.ma.us

Sudbury

River

WAYSIDE RD

TO MA 126

P
Do Not Block Gate

P
SEDGEMEADOW RD

RD

MOORE

LEGEND

- Bay Circuit Trail
- Roadside Path or Trail
- Conservation Trails
- P** Parking Areas
- Trail Junctions
- Federal or State
- Wayland Conservation
- Wayland Municipal
- Sudbury Valley Trust
- Conservation Restrict.
- Open Fields
- Wetlands

SEDGE MEADOW

ELLEN MARY LN

LN

TO CONCORD

BLACK CAT FARM (S.V.T.)

P

GLEZEN

SADDLE LN

TRAINING

FIELD RD

126

Baldwin Pond

TO MA 27

TO WAYLAND CENTER