



LEGEND

-  Existing Historic District
-  Proposed Addition to Historic District
- 23-44 Assessor's Parcel Number

CERTIFICATIONS

I CERTIFY THAT THIS PLAN SHOWS THE PROPERTY LINES THAT ARE THE BASIS OF EXISTING OR PROPOSED HISTORIC DISTRICTS AND THAT THE WAYS SHOWN ARE THOSE OF PUBLIC OR PRIVATE STREETS OR WAYS ALREADY ESTABLISHED, AND OWNERSHIP OR FOR NEW WAYS ARE SHOWN PARTHEREOF. I CERTIFY THAT THE PREPARATION OF THIS PLAN WAS IN ACCORDANCE WITH THE REGULATIONS OF THE REGISTRARS OF DEEDS OF THE COMMONWEALTH OF MASSACHUSETTS.

PROFESSIONAL LAND SURVEYOR
DATE:

THIS PLAN WAS AMENDED AT THE MAY 3, 2001 ANNUAL TOWN MEETING AND WAS APPROVED BY THE ATTORNEY GENERAL'S OFFICE ON AUGUST 10, 2001.

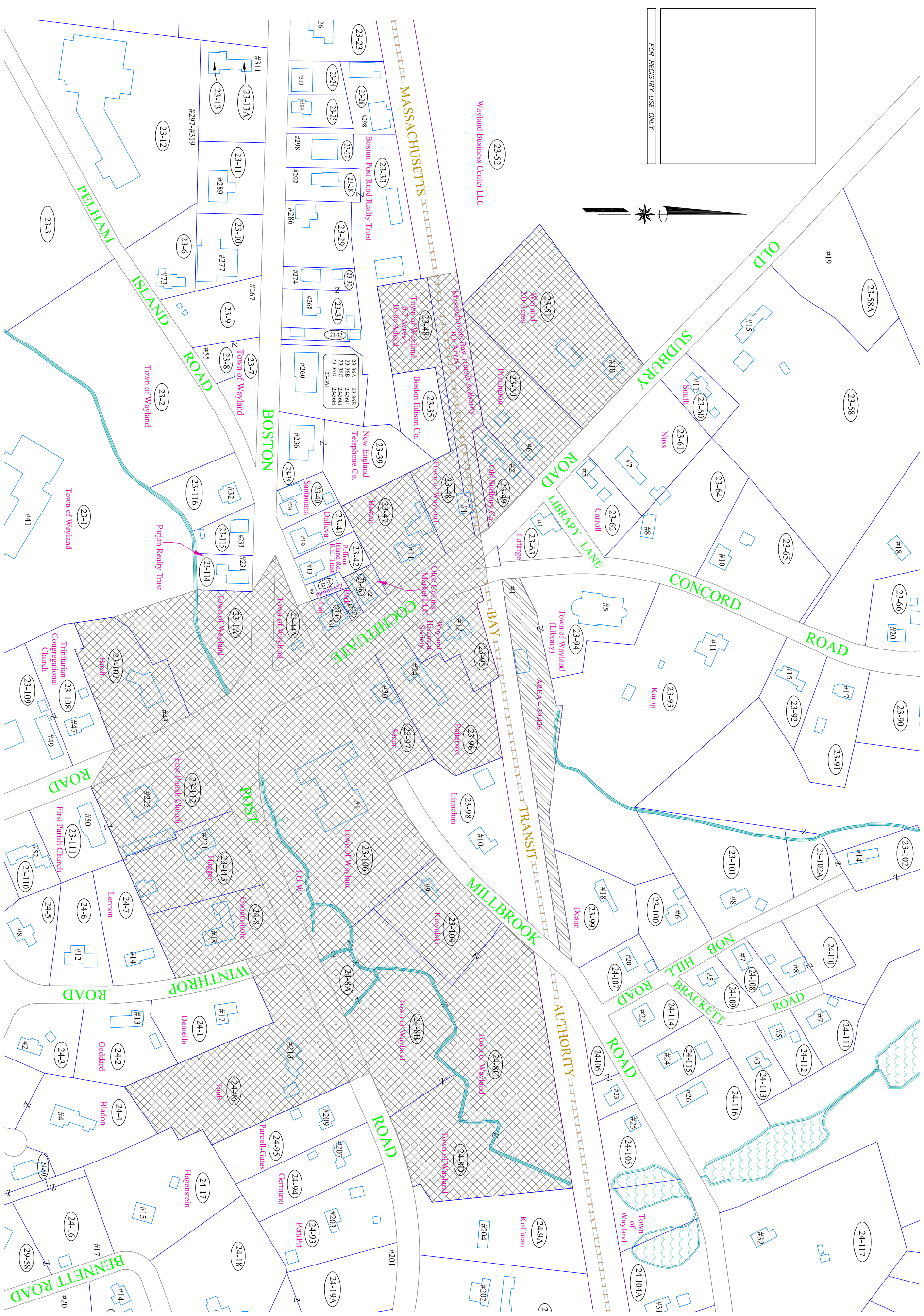
No.	Revision/Issue	Date

Town of Wayland
Massachusetts

Town Surveyor's Office
27 COLONIAL ROAD, BOSTON, MASSACHUSETTS

Plan Showing Proposed Historic District Changes in Wayland, Massachusetts 2001 Annual Town Meeting Article 34

Project	Sheet
Historic District 2001	
Date	
2/1/2001	
Scale	
1" = 100'	



FOR REGISTRY USE ONLY

