

# How to read your Water Meter

There are several reasons why you might want to locate and read your water meter. First, you might be interested to know how much water you use in a day. By reading your meter at the beginning and end of a day, you can compare the 2 readings to tell how much water you and your family used. The 2nd reason is to check for leaks. To do this, turn off all the taps in your house, and then look at your meter. If the meter is still turning, chances are you have a leak somewhere. Here are some tips to help you find and read your water meter.

## **Step 1: Locate Your Meter**

Your water meter is located in your basement along the wall closest to the street.

## **Step 2: Read Your Water Meter**

All customers within the Town of Wayland have their water use measured by a meter. Wayland's water meters measure water in cubic feet (1 cubic foot equals approximately 7.5 gallons). Charges for the amount of water consumed are based on the number of units (1 unit equals 100 cubic feet or approximately 748.05 gallons) used during a billing period.

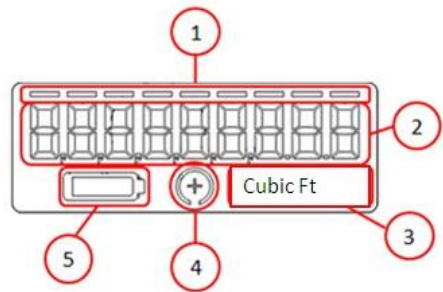
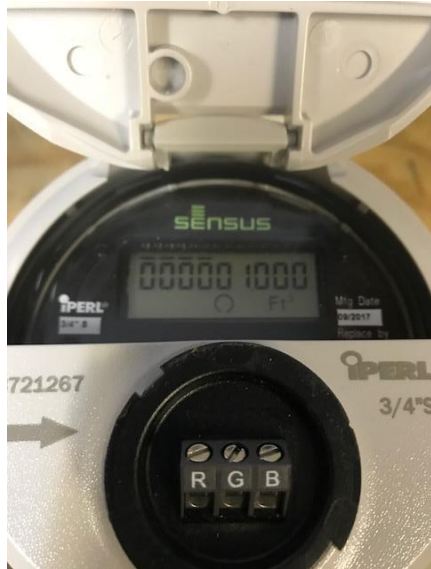
## **Types of Meters**

### **Straight-Reading Meter 5/8 Inch – 1 Inch**



The majority of the town's water meters are the straight-reading type of meter, which resembles an odometer in a car. In the meter shown, the reading is taken from figures shown above the words "CUBIC FEET." The meter reads 2235.87, which is the total number of cubic feet of water recorded since the meter was installed. The Water Division bills in units of 100 cubic feet, we would read this meter as simply 2235.

### Digital Water Meter Dials ¾ Inch & 1 Inch Meters



1. There are 9 digits / bars on the Sensus iPerl meter at the top of the digital display. Only the 1st 4 numbers at the far left are programmed in 100 cubic feet and read.
2. You can also monitor the 9th number to the far right to check for leaks. Example: If the number rotates from 0 to 1, that's equivalent to 1/1,000th of one cubic foot of water (which is approximately 1 ounce).
3. Wayland uses cubic feet as its units of measure.
4. To check for leaks, use the Flow Direction / Empty Pipe Indicator. If there is a plus sign in the middle of this circle, water is passing through the meter.
5. Battery life indicator.

The meter pictured reads 0000.01, or 1 cubic foot of water used. The Water Division bills in units of 100 cubic feet, we would read this meter as simply 0000.

Please feel free to contact the Water Division at 508-358-3672 for additional guidance on this issue.